

HOG PRICES

Lancaster Market

HOGS: Barrows and gilts strong to 25 higher.
BARROWS AND GILTS:
 US 1 210-240 lb. 41.75-42.25;
 US 1-2 200-240 lb. 40.75-41.10;
 US 2-3 190-260 lb. 40.25-40.75.

Vintage Auction

November 9
 HOGS 684. Compared with last Saturday's market; Barrows and gilts mostly steady to 25 cents lower. US No. 1-2 200-245 lbs. 41.50-41.85, No. 1-3 200-255 lbs. 41.00-41.35, few 185-190 lbs. 40.00-40.25, No. 2-3 250-300 lbs. 37.00-39.50; No. 2-4 135-175 lbs. 35.00-38.00. **SOWS:** US No. 1-3 400-570 lbs. 30.00-32.50. **BOARS:** One at 26.25, few light weight 36.50-38.00.

November 13
 HOGS 480. Compared with last Wednesday's market: US No. 1-2 210-240 lbs. barrows and gilts 40.50-41.00, few to 41.10, No. 1-3 190-250 lbs. 39.50-40.50. US No. 1-3 300-500 lbs. sows 32.75-33.75. **BOARS** 27.50-28.00.

Lancaster Auction

HOGS: Barrows and Gilts 1.00 lower.
BARROWS AND GILTS: 5 head US 1 225-230 lb. 41.10-42.10; US 1-2 200-240 lb. 39.75-40.25; US 2-3 200-260 39.25-39.75.

Leb. Valley Auction

HOGS 448. Barrows and gilts \$1.50 lower. US No. 1-3 195-240 lbs. barrows and gilts 39.75-40.60, No. 2-3 190-270 lbs. 38.00-39.60. US No. 1-3 300-500 lbs. sows 31.00-34.25. **BOARS** 24.00-30.00.

New Holland Auction

November 11, 1974
 HOGS 1177. Compared with last Monday's market; Barrows and gilts 50c to 75c higher. US No. 1-2 200-240 lbs. 41.25-42.50, No. 1-3 200-250 lbs. 40.75-41.25, No. 2-3 230-270 lbs. 39.50-40.75, No. 2-4 170-190 lbs. 38.50-40.75.
SOWS: US No. 1-3 300-575 lbs. 31.00-34.75. **BOARS:** 28.00-36.00.

Peoria Auction

HOGS: 3000. Barrows and Gilts fully 50 higher.
BARROWS AND GILTS: US 1-2 200-240 40.00.

Indianapolis Auction

HOGS: 1000. Barrows and Gilts 50-75 higher.
BARROWS AND GILTS: US 1-2 210-240 40.00-40.25; US 1-3 200-250 39.75-40.00; Few US 2-3 240-270 39.00-39.75.

St. Louis Auction

HOGS: 5000. Barrows and Gilts 25-50 higher.
BARROWS AND GILTS: US 1-3 39.50; 150 hd. US 1-2 39.75.

Read Lancaster Farming For Full Market Reports

New York Dressed Meats

Due to a breakdown in the USDA teletype equipment, there will be no market report for New York Dressed Meats.

Local Grain

Thursday, November 14
 These prices are made up of the average prices quoted by a number of participating local feed and grain concerns. It should be noted, however, that not every dealer or broker handles each commodity. All prices are per bushel except ear corn which is per ton.
 The average local grain prices quoted Thursday, November 14, 1974 are as follows:

	Bid+	Offered+
Ear Corn		
New	60.00	68.00
Old	—	—
Shelled	3.42	3.66
Oats		
Local	1.82	2.12
Western	2.25	2.42
Barley	2.37	2.57

+Bid is the price the dealer will buy from the farmer delivered to the mill. Offered is the price the dealer will sell for at his mill.

Oklahoma City

Due to a breakdown in the USDA equipment no market report was available at publication time.

Peoria Cattle

Due to a breakdown in the USDA equipment no market report was available at publication time.

Read Lancaster Farming For Full Market Reports

U. S. Inspected Livestock Slaughter

Estimated Daily Livestock Slaughter Under Federal Inspections

	CATTLE	HOGS	SHEEP
Week to Date	536,000	1,243,000	122,000
Same Period Last Week	546,000	1,240,000	141,000
Same Period Last Year	476,000	1,245,000	133,000

Omaha Cattle

Thursday, November 14
 Compared with the previous week's close: average-good to prime slaughter steers 1.50-2.00 lower, instances 2.25-2.50 off, standard and low-good holsteins 1.00-1.50 lower. Heifers 1.50-2.00 lower, most pressure on good and low-choice 50-850 lbs. Cows .50-1.00 higher. Bulls steady.

Four day receipts 18,300 as compared 17,700 previous week and 14,900 a year ago. Steers made up approximately 25 pct. of week's total, heifers 20 pct., cows 7 pct. and feeders fully 45 pct. including those consigned for Friday auction.

STEERS: On Monday, load choice with few prime 1216 lbs. yield grade 3 40.50 for Canadian shipment, moderate volume choice and prime 1106-1358 lbs. yield grade 3-4 38.50-40.00 Monday and Tuesday. At midweek, two loads choice and prime 1010-1225 lbs. yield grade 3-4 37.50. Choice 975-1250 lbs. yield grade 2-4 closed 36.50-37.50, two loads 1540 lbs. yield grade 3-5 35.00. Mixed good and choice 950-1225 lbs. 35.50-36.50. Good 33.50-35.50, several loads and part loads 1200-1400 lb. holsteins yield grade 2-3 33.50-34.00. Standard and low-good 32.00-33.50.

Average cost slaughter steers first three days 37.03 average weight 1123 lbs. as compared 38.52 and 1116 lbs. previous week and 39.88 and 1125 lbs. a year ago.

HEIFERS: Moderate volume Choice and Prime 880-1083 pounds 3-4 37.50-38.50 early, load Monday 38.75. At midweek low time, load same grade 975 lbs. 3-4 37.00, small consignment 36.75. Choice 850-1025 lbs. 2-4 closed 35.25-36.50. Mixed good and choice 750-975 lbs. 34.25-35.50. Good 32.00-34.00. small lots standard and good 31.00-32.00.

COWS: Utility and commercial 17.00-19.00. Canner and cutter 13.50-17.00, mixed cutter and low-utility 17.25-17.50. Shelly canner 10.00-13.00.

BULLS: 1&2 1400-1800 pounds 23.50-26.25.

Futures Trading

(Closing bids as of Thursday, November 14)

	Chicago Cattle	Chicago Hogs	New York Maine Potatoes	Chicago Fresh Eggs
November				53.00
December	36.70	38.50		60.25
January			3.90	61.45
February	39.10	41.30		60.45
March			4.10	63.00
April	40.20	40.90	4.43	59.45
May			5.40	58.60
June	41.40	43.55		59.50
July		44.60		
August	41.50	43.10		
October		42.80		
November			4.28	
December		42.90		

Trend — Cattle are Stronger; Hogs are Mixed; Potatoes are Weaker; and Eggs are Stronger.

Markets Provided by Commodity Department Reynolds Securities, Inc.

Chicago Grain Futures

(Closing bids as of Thursday, November 14)

	Corn	Wheat	Soybeans	Soybean Meal
November			7.85	
December	3.73½	4.91½		155.50
January 1975			7.98½	162.25
March	3.82½	5.10½	8.13½	170.75
May	3.86½	5.12½	8.26½	176.50
July	3.86½	4.80½	8.33½	179.00
August				179.25
September	3.74	4.86	7.87	178.50
December		4.96		

Trend — Corn is Lower, Wheat is Mixed, Soybeans are Lower, and Soybean Meal is Stronger.

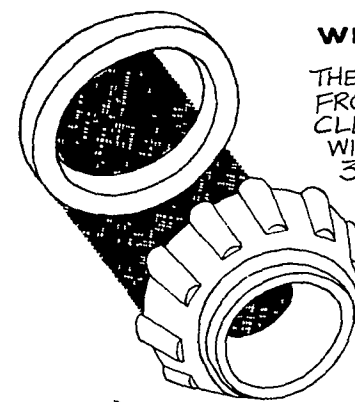
Markets Provided by Commodity Department Reynolds Securities, Inc.

New Holland Horse Auction

Monday, November 11
 Reported receipts of 518 horses, ponies and mules. Market steady with last week.
 Load of Tennessee riding horses 200-235.
 Load of Ohio riding horses 130-270.
 Load of North Carolina work and riding horses; riding 100-165, work singles 270-315 and work pairs 540-670.
 Load of West Virginia

work horses pairs 1260-1325.
 Load of Massachusetts singles 120-350.
 Load of Kansas riding horses 155-270.
 Load of Tennessee riding horses 165-500.
 Local work horses 300-500, mules 150-185, better horses 225-450, driving horses 150-155, riding horses 145-210, light weight killers 10-15, heavy weight killers 17-19, mare ponies 10-30, colts 5-15, geldings 10-20 and larger ponies 45-75.

Automobile Service Tips



WHEEL BEARINGS ...
 THE BEARINGS ON THE FRONT WHEELS MUST BE CLEANED AND PACKED WITH GREASE AT ABOUT 30,000 MILE INTERVALS — NEW GREASE SEALS ARE ADVISABLE EACH TIME THIS IS DONE. LEAKING SEALS CAN DESTROY THE BRAKING EFFICIENCY OF LININGS.

IMPORTANT NOTICE

LET US HANDLE YOUR FEEDER PIGS

NEXT FEEDER PIG SALE TUES., NOV. 19

As a result of increased receipts and popular demand on the part of both buyers and seller, Bi-monthly Feeder Pig Sales will be held at the Lancaster Stockyards.

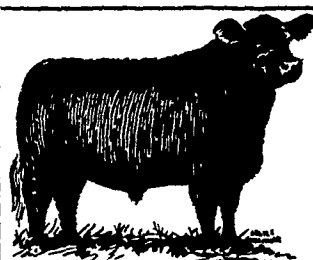
Feeder pigs consigned to Walter M. Dunlap and Sons must arrive at the stockyards between 7 A.M. and 11 A.M. the day of the sale. Upon arrival they will be inspected by a veterinarian, tagged, and state graded.

The two sales scheduled for November will be held on Tuesday, the 5th, and Tuesday, the 19th, starting at 1 P.M. Consignors wishing to tag their pigs on the farm can get the tags at the state office at the stockyards, not later than 4 P.M. any day preceding the sale, thereby saving 25 cents per pig.

Consign all your feeder pigs to Walter M. Dunlap & Sons where they will be handled by a capable and experienced staff, and for further information call 717-397-5136.

WALTER M. DUNLAP & SONS

Capable Service To The Livestock Industry Since 1898



DANVILLE LIVESTOCK MARKET

Old RT. 11
 Danville, Pa.
 Phone (717) 275-2880

SALE EVERY MONDAY 2 P.M.