



President Mrs. Carl Johnson, Sr. (left) welcomes the new officers (center) Mrs. Harry Hershey, Jr. and Mrs. Charles Rohrer. (right)

Farm Women Calendar

Saturday, November 9
Farm Women Society 1 meeting at 1:30 p.m.
Farm Women Society 10
meeting at the home of Ruth Landes, Hershey Avenue.
Farm Women Society 2
meeting at the home of Mrs. Paul Donough, RD4, Manheim.
Tuesday, November 12
Farm Women Society 22 meeting at 1:00 p.m.
Thursday, November 14
Christmas Homemaking Meeting at the Farm and Home Center beginning at 10:00 a.m. with fee of \$1.00. Day will include Mrs. Betty Groff speaking in the morning with demonstrations in the afternoon.
Saturday, November 16
Farm Women Society 8 meeting at 2:00 p.m.

Pottery Makes Good Gifts

Pennsylvania craftsmen have kept people and their homes in mind as they design functional objects to relate to use and environment, according to Miriam McGrew, Extension home related arts specialist at The Pennsylvania State University. Whether you want a quality piece of pottery for functional use, a gift, or "just for beautiful," Pennsylvania potters have just the piece for you.

Potters use the clays of our earth to create unusual containers. You can choose from a wide range of quality pottery including tall pots, low pots, hanging pots, tiny weed pots and large planters. Pottery wind bells to hang outside your window furnish a moving arrangement that's not only pleasant to the eye but also to the ear with its soft musical tones. Pennsylvania potters have

created beautiful ovenware containers for foods, points out the Extension specialist. Look for casseroles with lids that serve as an extra plate, jam jars, cookie jars, punch bowls and mugs. Even winter birds can have a unique pottery feeder.

Pottery containers are excellent choices for arrangements of dried materials. With a selective eye and a little time, you can arrange these materials in a tall floor piece or a tiny accent piece. And if you don't have all the dried material you need, now is a good time to collect them, reminds Miss McGrew. Dried weeds and grasses, nuts and cones, locust and catalpa pods and teasel are just a few of nature's autumn textures you can gather and use for interesting arrangements from now until next spring.

TRY A CLASSIFIED

Jane Alexander

(Continued from Page 38)

stallation of all county and local society officers. Extension Home Economist Doris Thomas expressed her gratitude to the Farm Women for being "staunch supporters of the many activities I have asked you to help with. Over the past 11 years we have developed a warm relationship, and when I needed your help you were right behind me."

The following local industries provided gifts to the county convention: Pennsylvania Dutch Tourist Bureau, Pensupreme Dairies, Garvins, Rebmans and Watt and Shand.

Gifts of appreciation were given to Mrs. Sterling Elmer, Society 25, outgoing secretary, and Mrs. Milton Funk, Society 23, outgoing treasurer. Entertainment in the afternoon was presented by Miss Kay Weaver, and group singing was led by Mrs. Charles Rohrer, Society 7. A memorial service was conducted by Mrs. Harry Hershey, Jr., Society 26.

Resort

A resort has been called a hotel where no one knows how unimportant you are at home


Live Oak

An oak tree that lives for 1,000 years will exude 250,000 tons of water during that time.

Book: Of Numbers

The Bible contains 733,892 words — consisting of over 3 million letters

GARBER OIL CO.



TEXACO

Fuel Chief HEATING OIL

& OIL HEATING EQUIPMENT

AIR CONDITIONING

MOUNT JOY, PA
Ph. 653-1821

LAND SAKES!

it wouldn't be


CHRISTMAS

without the things from

REBMAN'S

Park & Shop 9 AM to 9 PM
800 S. QUEEN ST., LANC.

"It's smart to be Thrifty"



More farmers each month prefer to buy their

- **EAR CORN**
- **HAY • STRAW**

from us for better value and all around satisfaction. At farm or delivered, any quantity as your requirements may be.

Area Code 717 687-7631

ESBENSCHADE TURKEY FARM

"America's Oldest"

PARADISE, PA.



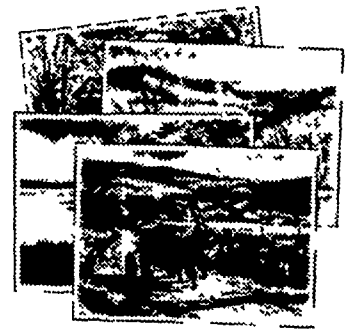
Only at

Commonwealth

The Automatic Christmas Club

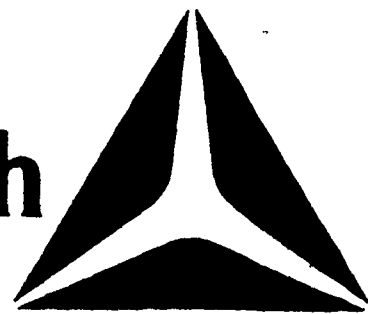
Commonwealth's Christmas Club, open now at all branches, pays a big 5% annual interest. At Commonwealth, you can save automatically. You may have payments—as little as \$2 every other week—transferred automatically from your Commonwealth checking account to your Christmas Club. Saving in our Christmas Club has never been easier.

Bonus: The Pennsylvania Portfolio. Just \$1.00



When you join Commonwealth's 1975 Christmas Club—either 5% automatic or coupon book—you are entitled to purchase a set of four central Pennsylvania watercolor prints. In addition to the horse and buggy scene shown, there is a covered bridge, a farmhouse, and the Millersburg ferry. All in lovely color, suitable for framing. A thoughtful gift... a tasteful addition to your own home.

Commonwealth National Bank



Lancaster • Centerville • Lancaster East • Landisville • Lititz • Manheim Township
Millersville • Rohrerstown • Elizabethtown • Elizabethtown East • Willow Street • New Holland
Additional offices throughout south central Pennsylvania
Member FDIC