

HOG PRICES

Lancaster Market

HOGS: Barrows and Gilts steady.

BARROWS AND GILTS: US 1 210-245 lb. 42.00-42.25; US 1-2 200-245 lb. 40.50-41.10; US 2-3 200-260 lb. 40.00-40.50.

Vintage Auction

November 2, 1974

HOGS 757: Compared with last Saturday's market. Barrows & Gilts: 50 cents to \$1 lower. US No. 1-2 200-245 lbs. 41.75-42.00, No. 1-3 200-255 lbs. 41.00-41.60, No. 2-3 240-260 lbs. 40.60-41.00, lot 188 lbs. 39.60, No. 2-4 155-175 lbs. 33.25-37.50. SOWS: US No. 1-3 290-480 lbs. 33.00-33.85. Few Boars 25.00-27.75, few light weights 30.00-32.00.

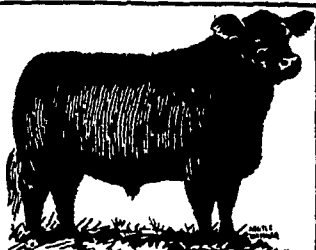
November 6, 1974

HOGS 425: Compared with last Wednesday's market. Barrows & Gilts: Mostly 25 cents to 50 cents lower. US No. 1-2 200-240 lbs. 40.75-41.50, No. 1-3 200-250 lbs. 40.00-40.75. US No. 1-3 300-550 lbs. sows 32.00-34.00. Boars: 26.00-28.00, Light. Weights 30.00-32.00.

Lancaster Auction

HOGS: Barrows and gilts steady to 25 lower.

BARROWS AND GILTS: US 1 210-235 lb. 41.75-42.00; US 1-2 200-240 lb. 40.60-40.85; US 2-3 200-260 lb. 40.00-40.50.



DANVILLE LIVESTOCK MARKET

Old RT. 11
Danville, Pa.
Phone (717) 275-2880

SALE EVERY
MONDAY 2 P.M.

Leb. Valley Auction

No market report available

New Holland Auction

November 4, 1974

HOGS 1388: Compared with last Monday's market. Barrows & Gilts: 75 cents to \$1.75 lower. US No. 1-2 200-240 lbs. 40.50-42.00, No. 1-3 200-250 lbs. 40.00-40.50, No. 2-3 230-275 lbs. 38.50-40.00, No. 2-4 160-190 lbs. 36.50-40.00. US No. 1-3 300-575 lbs. sows 31.00-35.00, No. 2-3 300-600 lbs. 27.00-31.00. Boars: 30.00-34.50.

Peoria Auction

Barrows and gilts 75 higher.

BARROWS AND GILTS: US 1-3 200-240 lb. 40.25-40.50.

Indianapolis Auction

Barrows and gilts steady to 25 higher.

BARROWS AND GILTS: US 1-3 200-250 lb. 39.50-40.00; 50 head US 1-2 220-240 lb. 40.35.

St. Louis Auction

Barrows and gilts 50 higher.

BARROWS AND GILTS: US 1-3 200-250 lb. 39.50-40.00.

TRY A
CLASSIFIED
AD!

U. S. Inspected Livestock Slaughter

Estimated Daily Livestock Slaughter
Under Federal Inspections

	CATTLE	HOGS	SHEEP
Week to Date	544,000	1,222,000	146,000
Same Period Last Week	488,000	1,130,000	128,000
Same Period Last Year	489,000	1,190,000	140,000

New York Dressed Meats

November 7, 1974

Compared with Wednesday: Weakness dominating price structure for railstock classes; listed fresh pork cuts steady to weak aside from picnics around \$3.00 lower.

Practically all fresh meats under pressure at wholesale level in the New York area as demand generally holding while downtrend for replacement meats a strong underlying influence.

Steer Beef

Prime 600-900 lbs. \$67.50-68.50. Choice 600-700 67.00-68.00; 700-800 65.00-67.00; 800-900 63.00-65.50. Good 500-800 63.50-65.00.

Heifer Beef

Choice 500-700 lbs. 66.00-67.00.

Calf (Skin Off)

Choice 150-350 lbs. 62.00-70.00. Good 150-350 52.00-58.00. Standard 150-350 50.00-53.00.

Veal (Skin Off)

Choice 90-150 lbs. 90.00-97.00. Good 60-90 75.00-84.00. Standard 60-120 65.00-70.00.

Lamb:

Choice & Prime 30-55 86.00-87.00; 55-65 85.00-87.00.

Choice Beef Cuts

Hinds (Steer) 145-190 lbs. 80.00-81.00; Arm Chunks 90-150 58.00-62.00; ribs (7-Rib) 34-40 87.00-91.00; Loins (TRMD) 50-70 97.00-100.00; Rounds (Steer) 70-95 80.00-82.00; Full Plates 36.00-37.00; Hinds (Heifer) 120-170 79.00-80.00.

Pork Cuts (Fresh)

Loins (Regular) 8-14 77.00-79.00; 14-17 76.00-78.00; Picnics (Regular) 4-8 45.00-48.00; Boston Butts 4-8 60.00-65.00; Spareribs 3 lbs. down 76.00-80.00; Hams (Skinned) 14-17 75.00-78.00; 17-20 75.00-77.00.

Kosher Steer Beef:

Choice and Prime forequarters \$59.00-62.00.

Omaha Cattle

Thursday, Nov. 7

Compared with the previous week's close: Slaughter steers 50-75 cents lower and heifers 50-1.00 off. Cows 2.00-3.00 lower, greatest decline on Canner and Cutter 650-800 lbs. Bulls steady.

Four day receipts 17,800 as compared 19,400 previous week and 18,000 a year ago. Slaughter steers approximately 30 pct. weekly total, heifers 22 pct., cows 11 pct. and feeders for Friday acution 35 pct.

SLAUGHTER STEERS: The forepart of week, several loads Choice and Prime 1125-1372 lbs. yield grade 3-4 40.00-40.25, load 1242 lbs. 4 39.50. At midweek four loads same grade 1090-1185 lbs. 3-4 39.50-39.75, load 1238 lbs. yield grade 4 38.00 and load 1347 lbs. 3-5 37.75. Choice 975-1300 pounds 2-4 closed 38.00-39.25, few loads 1325-1400 lbs. 37.25-38.00. Mixed Good and Choice 950-1225 pounds 37.25-38.25. Good 35.00-37.50. Standard and low-Good 33.00-34.50.

Average cost of slaughter steers first three days 38.55 average weight 1117 lbs. as compared 39.09 and 1129 lbs. previous week and 40.05 and 1124 lbs. a year ago.

SLAUGHTER HEIFERS: Three loads and part load Choice and Prime 917-1019 lbs. 3-4 39.00. Later, same grade 921-1105 lbs. yield grade 3-4 38.25-38.75, load 1179 lbs. 3-5 36.75. Choice 850-1050 lbs. 2-4 37.00-38.00. Mixed Good and Choice 750-975 lbs. 36.25-37.25. Good 33.00-36.00. Small lots Stand and low-Good 32.00-33.00.

COWS: Utility and Commercial mainly 16.00-17.50, a few Utility dairybreds 18.00-18.50. Canner and Cutter 12.00-16.00, mixed Cutter and low-Utility 16.25-16.50. Shelly Canner 10.00-12.00.

BULLS: 1-2 1400-1800 pounds 23.50-26.00.

Editor's Quote Book

If we had no faults, we should not take so much pleasure in noting those of others.

— La Rochefoucauld

Futures Trading

(Closing bids as of Thursday, November 7)

	Chicago Cattle	Chicago Hogs	New York Maine Potatoes	Chicago Fresh Eggs
November			3.72	49.30
December	39.25	41.55		59.20
January				58.70
February	41.60	44.45		59.00
March			4.25	62.30
April	42.25	43.85	4.71	58.50
May			5.66	57.45
June	43.30	46.70		59.15
July		47.60		
August	43.25	46.35		

Trend — Cattle are Lower, Hogs are Lower, Potatoes are Lower, and Eggs are Stronger.

Markets Provided by Commodity Department
Reynolds Securities, Inc.

Chicago Grain Futures

(Closing bids as of Thursday, November 7)

	Corn	Wheat	Soybeans	Soybean Meal
November			8.37	
December	3.78½	5.14	8.55½	168.25
January 1975				171.50
March	3.87½	5.30½	8.72½	178.00
May	3.91½	5.34	8.81½	182.75
July	3.92¾	4.94½	8.87	186.00
September	3.79½	5.00	8.82	183.00

Trend — Corn is Lower, Wheat is Lower, Soybeans are Mixed, and Soybean Meal is Weaker.

Markets Provided by Commodity Department
Reynolds Securities, Inc.

Baltimore USDA

Cattle 500. Slaughter steers & heifers steady, other classes being held for AM auction. Cows weak to 50 cents lower. Bulls \$2 to \$3 lower. Feeders fully steady. Supply 20 percent slaughter steers & heifers, 25 percent cows, 50 percent feeders, balance bulls.

STEERS: Several lots Choice Yield Grade 2-4 1000-1185 lbs. 41.00-42.00, individual 985 lbs. 42.75; Good 1000-1275 lbs. 36.25-38.50; package Good holsteins 1200 lbs. 36.00; Standard & low Good 1000-1165 lbs. 29.00-31.50.

HEIFERS: High Good & Choice yield grade 2-4 850-950

lbs. 36.50-39.50; few Good 31.75-35.00. **COWS:** Utility 18.50-23.10, Canners 16.50-19.00, Canner & low Cutters 14.00-16.50. **BULLS:** Yield Grade No. 1 1125-1570 lbs. 25.85-28.00; yield grade No. 2 23.25-25.50. **FEEDER CATTLE:** Couple lots Choice steers 1000-1070 lbs. 33.00-33.25, part load High Good & Choice steer calves 540 lbs. 32.75; Good & Choice heifers 315-470 lbs. 23.50-25.10.

HOGS 600. Barrows & Gilts \$1 to \$1.25 higher. US No. 1-3 200-230 lbs. 40.25-40.75, 20 head 41.00, No. 2-3 230-250 lbs. 39.75-40.25, No. 2-4 250-270 lbs. 38.75-39.75.

SOWS: Steady to \$1 higher. US No. 1-3 300-600 lbs. 32.00-33.00, few near 300 lbs. at 34.00.

New Holland Dairy Auction

Wednesday, November 6, 1974. Reported receipts of 190 cows and 13 heifers. Market steady with two weeks ago. (No report last week)

Load of Franklin County springers 560-840.

Load of Wisconsin cows fresh 580-630.

Load of Virginia cows springers 410-650.

Herd dispersal of cows in all stages of production 45 head 235-750.

Herd dispersal of 68 head of cows in all stages of production 240-810.

Locally consigned cows 310-900, springing heifers 450-565 and bred heifers 175-285.

New Holland Horse Auction

Monday, November 4, 1974

Reported receipts of 521 head of horses, mules, and ponies. Market steady with last week.

Load of Kansas riding horses 145-430.

Load of Tennessee riding horses 165-375.

Load of Iowa riding horses 175-310.

Load of Ohio riding horses 165-335.

Local work horses 275-355, mules 150-310, driving horses 150-380, riding horses 140-215, better horses 235-390, light weight killers 10-15, heavy weight killers 17-19, mare ponies 5-20, colts 5-10, geldings 5-15 and larger ponies 55-70.

IMPORTANT NOTICE LET US HANDLE YOUR FEEDER PIGS NEXT FEEDER PIG SALE TUES., NOV. 19

As a result of increased receipts and popular demand on the part of both buyers and seller, Bi-monthly Feeder Pig Sales will be held at the Lancaster Stockyards.

Feeder pigs consigned to Walter M. Dunlap and Sons must arrive at the stockyards between 7 A.M. and 11 A.M. the day of the sale. Upon arrival they will be inspected by a veterinarian, tagged, and state graded.

The two sales scheduled for November will be held on Tuesday, the 5th, and Tuesday, the 19th, starting at 1 P.M. Consignors wishing to tag their pigs on the farm can get the tags at the state office at the stockyards, not later than 4 P.M. any day preceding the sale, thereby saving 25 cents per pig.

Consign all your feeder pigs to Walter M. Dunlap & Sons where they will be handled by a capable and experienced staff, and for further information call 717-397-5136.

WALTER M. DUNLAP & SONS

Capable Service To The Livestock Industry Since 1898