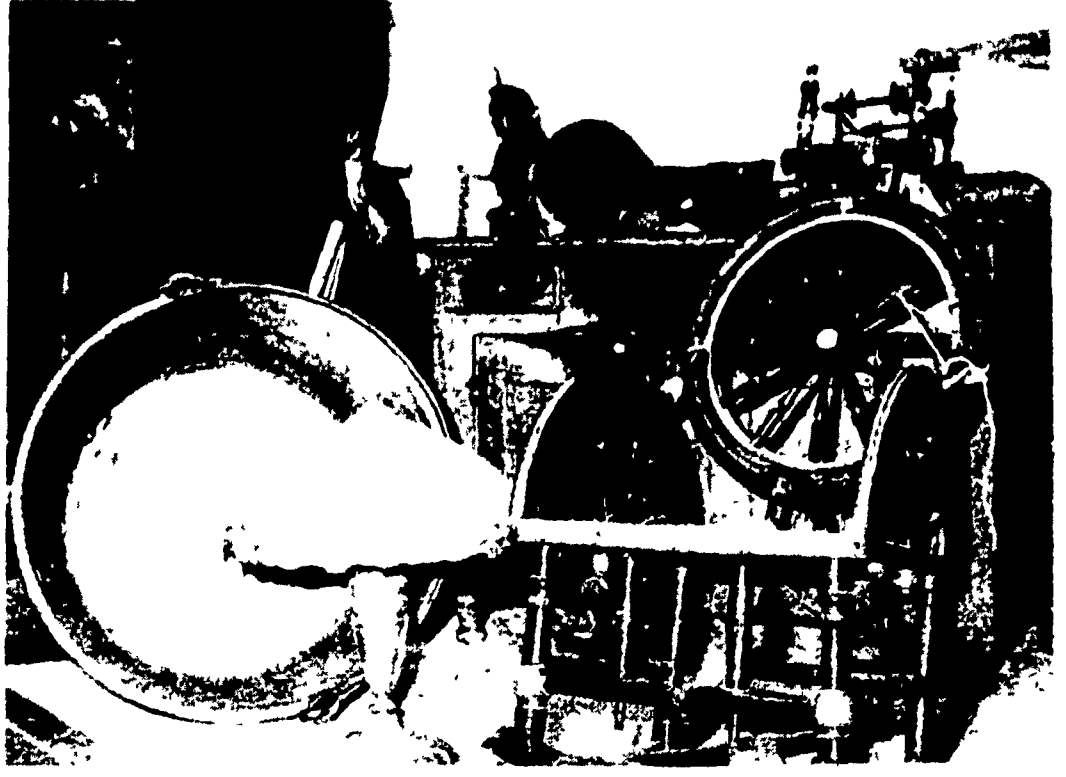


John Hess (left) and Jay Witman handled this item with care as they moved hundreds of antiques on Tuesday in preparation for the first of three Thursday night antique sales to be held at the Hat & Gavel Auction



House located along Rt. 501, a mile north of Lititz. This particular spinning wheel is an early two man type and is expected to bring a good price as it is a veritable museum piece.

Pictured above are some of the antiques to be offered for sale at the Hat & Gavel Auction House when owners Jay Witman and Wilbur Hosler begin their largest antique auction since opening in March. From left to right in front are shown a large dovetailed copper kettle, which comes from a Lititz area estate; an

early lamp with Tiffany shade; and a spinning wheel rocking chair, also from a Lititz area estate. Pictured behind the rocker is an old dry sink on which rests red ware flower pots and a red ware "Turks Head" (left). The large cupboard shown at the left rear of the picture is a "real museum piece", according to Witman.

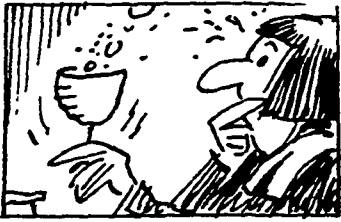
Antique Bonanza Termed Successful

Over 500 antique fanciers from all over the State gathered at the Hat and Gavel Auction Company, Lititz, on Thursday evening, November 7th for the first of three antique bonanza sales.

Some of the highlights of the sale included: A cherry farm table \$420; dove tailed copper kettle \$150; early Pennsylvania dry sink \$335; wooden desk \$190; wardrobe \$320; Pennsylvania Dutch Cupboard \$365; lead ware flower pots \$32 and \$40; turk head mold \$16; coverlet \$90; spinning wheel \$120; Planters peanut jar \$50.

The following two sales will be held on Thursday, November 14 and November 21 at the Auction Building on 501, 1 mile North of Lititz.

Jay Witman and Wilbur Hosler, Auctioneers, explained that the next two sales will offer a fine selection of china, coverlets and antique furniture.

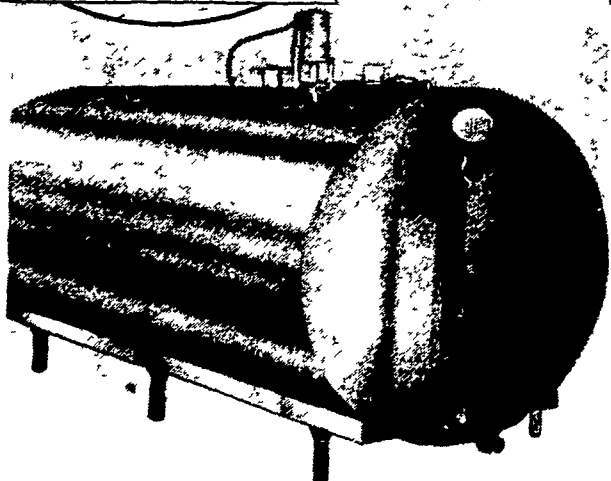


In England, the left eye of the hedgehog fried in oil was a remedy for insomnia in the 17th century.

Check Our Prices

**BEFORE YOU BUY
NEW BULK MILK TANKS**

In Stock For Immediate Delivery



Farming is Better
with Badger

PARTS — SALES — SERVICE

CARL L. SHIRK

RD5, LEBANON, PA.
COLEBROOK RD. PHONE 274-1436



"38" MIXER CRUMBLES

WITH



FEED PRE SERVER

**BEST USE OF HOME GRAINS PROMOTES
HIGH MILK PRODUCTION**

BEACON "38" CRUMBLES is a coarse textured dairy concentrate formulated especially for use in these two states. High in protein (all from vegetable sources) it balances the nutrients you can grow most economically and efficiently on Pennsylvania and Maryland farms.

It contains a blend of all essential amino acids, the building blocks of proteins. Used as recommended, you can be sure you are meeting the protein requirements of your cows and young stock.

All known requirements for minerals and vitamins are carefully balanced by using the highest grades of calcium, phosphorus and trace mineral sources.

BEACON "38" CRUMBLES can be used as a top feed in mangers or bunks if additional protein is needed.

BEACON FEED PRE SERVER. A new product developed that can be used with Beacon "38" and with new corn and cob chop. It keeps your corn from heating and increases palability of your feed.

H. JACOB HOOPER
INTERCOURSE, PA.

EARL SAUDER, INC.
NEW HOLLAND, PA.

VAN-MAR FEEDS
LEESPORT, PA.

THARPE & GREEN MILL
CHURCHVILLE, MD.

H. M. STAUFFER & SONS, INC.
WITMER, PA.

**MCCRACKEN'S FEED
MILL, INC.**
MANHEIM, PA.

Beacon Reps.

TED BELEFSKI
Ph. 523-9173

CHESTER WEIST
Ph. 741-2600

R. E. RUDISILL
Ph. 854-2281

RICHARD B. KENDIG
Ph. 302-478-3058

Beacon Feeds, York, Pa. — Phone 717-843-9033