

Agway Chairman Cites Shortages, Inflation For Challenging Year

The board chairman of Agway Inc. Oct. 31 told members of his cooperative last week that the combination of farm supply shortages and unbridled inflation made 1973-74 a very challenging year. George Steele, Pocopson, Pa., dairyman, speaking at the Agway annual meeting in Onondaga County War Memorial, Syracuse, N.Y., said the situation "taxed the

patience and understanding of members, who desperately needed production supplies."

Steele said the situation was no better for Agway employees, who were trying desperately to meet members' needs.

Agway is a farm supply and food marketing business owned by farmers in 12 northeastern states. Its board is made up of 18 farmer-members.

Steele praised the ability of members and employees to "keep their cool" under trying circumstances.

Acknowledging that there were some rough spots, he emphasized that, on the whole, members and employees worked together to keep supplies moving and make the best of a difficult situation.

Steele also noted that despite the general decline in the number of farms in the 12 northeastern states where Agway serves, membership in the farm supply and food marketing cooperative increased by 2,000 to its present total membership up to the 113,000 mark.

As an indication of the new emphasis being placed on women's role in farm operation, Steele reported that the Board of Directors had voted to open up Agway membership to women as well as to young people who are actively engaged in farming.

"Because of the key role women play in today's successful farm operations, a farm wife may now own a share of common stock (no member may hold more than one share of common stock) in her own name, when requested, in preference to a share in joint ownership with her husband," Steele reported. "School-age children who are actually engaged in farming enterprises also qualify for membership and common stock ownership through a custodial arrangement with parent-members," Steele advised his audience.

He said that it was the board's hope that the action will "open the door to added participation by farm wives and young farmers in their cooperative."

4-H Horse Clubs Slate Recognition Program

Lancaster County's 4-H Horse Clubs will hold their first annual recognition banquet on Saturday night, December 7, at the Lancaster Farm and Home Center. Some 300 members, leaders and parents are expected to attend the banquet program, which begins at 6:30 p.m.

Master of ceremonies for the evening will be Jim Gallagher, Penn State's

extension specialist for horses. Awards will be presented for outstanding team leaders, perfect attendance, high sponsorship, most improved first and second year members, most active in 4-H activities, demonstrations, and an outstanding member award for a 4-H'er in his or her final year.

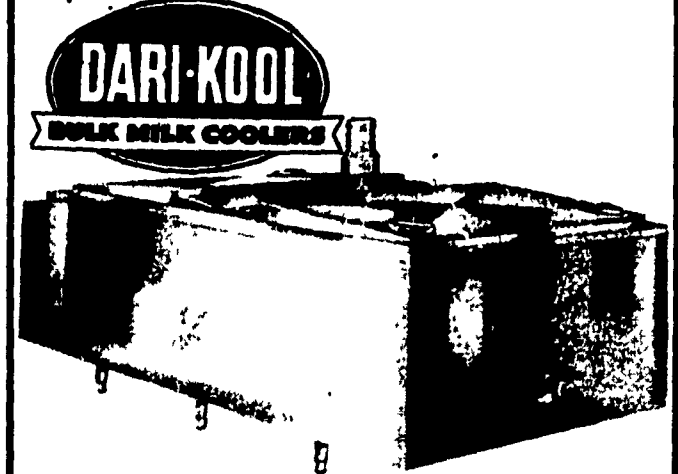
Many of the prizes will be donated by area feed companies.

Read Lancaster Farming For Farm Women News

SPECIAL OF THE WEEK 800 GAL. ZERO

(1 Year Old)

If you need a tank in this size call now on this special.



NEW ICE BANK TANKS IN STOCK NOW IN STOCK

12 Volt Controls
12 Volt Gear Motors

Used Bulk Milk Tanks (Excellent Cond.)

500 gal. Dari-Kool
Ice Bank

Spudnicks
Kesco Milk Transfer
System

WE ARE INTERESTED IN BUYING
GOOD USED BULK TANKS. GIVE US A CALL

FOR BULK MILK TANK SERVICE
CALL COLLECT

Call Us At (717) 626-4355, (717) 626-5996
or Answering Service At (717) 733-1224.

SHENK'S FARM SERVICE

R.D.4, Lititz

Ph. 626-4355

WHAT'S NEW FOR '75

JUST RETURNED FROM
LOUISVILLE, KENTUCKY

ALLIS-CHALMERS
INTRODUCES THE

NEW 7040 / 7060 / 7080
135 H.P. / 160 H.P. / 180 H.P.

THE RISING POWER IN TRACTORS
PLUS:

**NEW ALLIS CHALMERS
AIR PLANTER**

THE RISING POWER IN FARMING
SALES & SERVICE

GRUMELLI'S FARM SERVICE

Quarryville, Pa. 17566 Phone (717) 786-7318

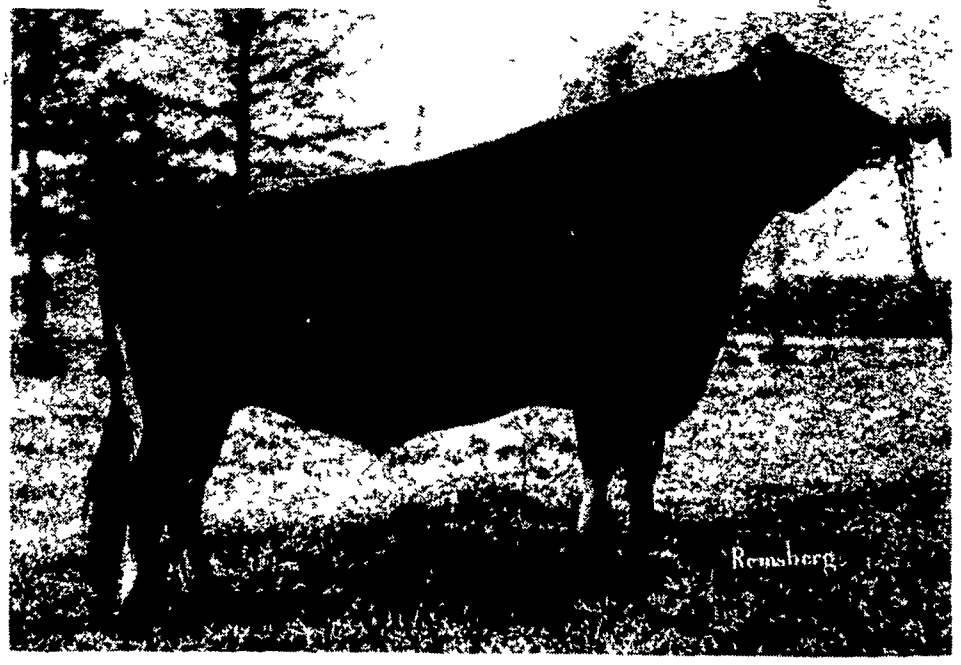
Parade of the Profit-Makers

These Plus-Proven Sires Are Available Daily For Your Dairy Herd:



15H140 Round Oak ELECTRON
Good Plus

USDA -- 21 Daus. in 18 Herds Ave
Predicted Difference (50% rpt.) 17,636M 3.67% 648F
(no official type summary to date) +933M +\$62 +29F
Sire: Lockway Sovereign Lucifer Lad -- VG & GM
Dam: Round Oak Ivanhoe End -- EX



15J48 B. S. Noble SUPERB
Gold Medal

USDA -- 28 Daus. in 5 Herds Ave.
Predicted Difference (37% rpt.) 10,571M 4.78% 505F
17 Classified Daus. Ave. 83.4; + 3/Br. Ave. +499M +\$35 +17F
Sire: Superb Adonia -- EX
Dam: Ann Arbor Sables Ginger -- VG

135 DAIRY SIRES ARE NOW AVAILABLE THROUGH OUR PROFESSIONAL TECHNICIAN SERVICE!

Atlantic

LIVESTOCK SERVICES BREEDERS COOPERATIVE

Member — NAL Affiliated Breeders

Call for service and information:

CLEONA*	273-6763	LANCASTER*	569-0411	READING*	376-8297
Elizabethtown	367-3923	Akron	859-2552	Lebanon*	273-6763
Hummelstown	566-2569	East Earl	445-4131	YORK*	792-0941
COATESVILLE*	384-2741	Gap*	442-4471	Brogueville	927-6210
Parkesburg	857-5545	Mount Joy	653-1451	Fawn Grove	382-4805
Oxford	932-9361	Quarryville	786-7381	Seven Valley	428-2266
Pughtown	469-9238			York Springs	528-4426

*24 hour answering service or recorder