

HOG PRICES

Lancaster Market

No market report available due to holiday.

Vintage Auction

October 28, 1974

HOGS 642: Compared with last Saturday's market. Barrows & Gilts: 75 cents to \$1 higher. US No. 1-2 200-240 lbs. 42.35-43.00, No. 1-3 200-240 lbs. 41.50-42.35, No. 2-3 230-255 lbs. 41.00-41.60, few US No. 2-4 255-275 lbs. 37.00-38.00, No. 2-4 140-165 lbs. 30.00-34.00. Sows: US No. 1-3 320-585 lbs. 28.00-33.25. Boars: Light Weights 28.00-31.00.

October 30, 1974

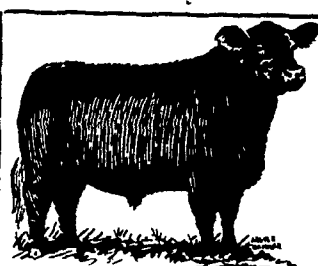
HOGS 600: Compared with last Wednesday's market. Barrows & Gilts \$1.50 to \$2 lower. US No. 1-2 200-240 lbs. 41.00-42.00, few to 42.25, No. 1-3 200-250 lbs. 40.50-41.50. US No. 1-3 300-550 lbs. sows 30.00-33.00. Boars 24.00-25.50, light weights to 34.00.

Lancaster Auction

HOGS: Barrows and Gilts 1.00-1.50 lower.
BARROWS AND GILTS: US 1 210-230 lb. 42.00-42.25; US 1-2 200-240 lb. 40.60-40.85; US 2-3 200-255 lb. 40.00-40.50.

Leb. Valley Auction

HOGS 408. Barrows & Gilts \$1.50 to \$2 lower. US No. 1-3 190-245 pounds barrows &



DANVILLE LIVESTOCK MARKET

Old RT. 11
Danville, Pa.
Phone (717) 275-2880

SALE EVERY MONDAY 2 P.M.

New York Dressed Meats

Thursday, Oct. 31

Prices fully steady for steer and heifer beef: small stock classes steady to weak: listed pork cuts unchanged however, loins carrying weak undertone.

Demand for fresh meats only fair at best with chain buyers active this session but purchasing conservative.

Steer Beef

Prime 600-900 lbs. \$67.50-68.50; 600-700 67.00-68.00; 700-800 65.50-67.00; 800-900 64.00-65.50; 500-800 63.50-64.50.

Heifer Beef

Choice 500-700 lbs. 66.00-67.00.

Calf (Skin Off)

Choice 150-350 lbs. 62.00-70.00. Good 150-350 52.00-58.00. Standard 150-350 50.00-53.00.

Veal (Skin Off)

Choice 90-150 lbs. 90.00-97.00. Good 60-90 75.00-84.00. Standard 60-120 65.00-70.00.

Lamb:

Choice and Prime 30-55 84.00-85.00; 55-65 83.00-85.00.

Choice Beef Cuts

Hinds (Steer) 145-190 lbs. 80.00-81.00. Arm Chucks 90-105 60.00-62.00. Ribs (7-Rib) 34-40 87.00-91.00. Loins (TRMD) 50-70 97.00-100.00. Rounds (Steer) 70-95 81.00-82.00. Full Plates 36.00-37.00. Hinds (Heifer) 120-170 79.00-80.00.

Pork Cuts (Fresh)

Loins (Regular) 8-14 lbs. 77.00-79.00 14-17 76.00-78.00. Picnics (Regular) 4-8 48.00-51.00. Boston Butts 4-8 64.00-67.00. Spareribs 3 lbs. down 75.00-80.00. Hams (Skinned) 14-17 73.00-75.00 17-20 73.00-75.00.

Kosher Steer Beef:

Choice & Prime forequarters \$59.00-62.00.

Baltimore USDA

October 28, 1974

Cattle 400. Slaughter steers & heifers fully steady. Cows at AM Auction steady. Supply 35 percent slaughter steers & heifers, 45 percent Cows, 15 percent feeders, balance bulls. **STEERS:** Lot High Choice & Prime yield grade 3-4 1130 lbs. 44.00, Choice 1080-1285 lbs. yield grade 2-4 41.35-43.50, few High Good & Choice 40.25-41.00, Good 950-1350 lbs. 33.60-37.50, few Standard & Low Good 30.50-33.35, few Standard 24.50-28.50. **HEIFERS:** Choice yield grade 2-4 900-925 lbs. 41.00, High Good & Choice 825-885 lbs. 38.00-39.25, Good 795-1070 lbs. 29.00-33.25. **COWS:** Utility 19.00-23.00, Cutters 17.00-19.35, Canner & Low Cutters 14.00-17.00, few Cutters 12.50-14.00.

HOGS 600. Barrows & Gilts: 25 cents to 50 cents higher. US No. 1-3 200-230 lbs. 41.00, mostly 41.25-41.50, No. 2-3 230-250 lbs. 40.50-41.25, No. 2-4 250-270 lbs. 39.75-40.75. **COWS:** 50 cents lower. US No. 1-3 300-600 lbs. 31.00-33.00, few under 300 lbs. 34.00.

Products available from your local FEED and FARM SUPPLY DEALER serviced by

Oklahoma City

Thursday, Oct. 31

Estimated Receipts 4,500 Same Day Last Week 10,560

Trade moderately active with a smaller supply due to rains received in the area. Feeder steers and heifers steady to strong. Quality improved over yesterday with bulk of supply Good and Choice 300-800 lb. feeder steers and 300-650 lb. feeder heifers. Moderate attendance buyers.

FEEDER STEERS: Choice and few Prime 400-500 pound 33.75-36.00. Choice 300-500 29.25-33.00; part load uniform thin 570 34.70, other 500-600 29.00-32.90; 600-700 29.00-33.00; 700-800 30.50-33.25. Few mixed Good and Choice 300-600 23.50-28.75; couple lots 680-685 27.40-27.50. Good 330-600 20.00-23.75, lot 1009 Holsteins 24.50.

FEEDER HEIFERS: Choice 350-600 pound 23.75-26.75; Few 600-660 25.00-28.00. Mixed Good and Choice 300-600 20.25-23.50; couple lots 600-650 22.80-24.00. Good 400-580 18.25-20.25.

FOR THE WEEK: Compared to last week, feeder steers and heifers 50 cents to 1.00, instances 1.50 lower with the most loss on mixed Good and Choice feeder calves. Slaughter cows strong to 50 cents higher. Slaughter bulls scarce all week to finish strong, instances 1.00 higher. Salable receipts totaled near 18,300 head compared to 31,022 last week and 25,048 same period last year. Cows comprised 14 percent of cattle receipts and feeders 85 percent of the total.

New Holland Horse Auction

Monday, October 28

Reported receipts of 478 head of horses, mules and ponies. Market steady with last week.

Load of Kansas riding horses 165-360.

Load of Tennessee riding horses 145-370.

Load of Tennessee riding horses 155-320.

Local work horses 250-375, mules 150-245, driving horses 170-300. Riding horses 165-215, better horses 230-370, lightweight killers 10-15, heavyweight killers 17-19, geldings 10-25, mare ponies 10-30 colts 5-10 and larger ponies 50-80.

Futures Trading

(Closing bids as of Thursday, October 10)

	Chicago Cattle	Chicago Hogs	New York Maine Potatoes	Chicago Fresh Eggs
November			3.55	49.60
December	41.07	41.60		61.00
January			3.82	60.70
February	41.95	43.90		60.00
March			4.25	63.25
April	42.17	43.25	4.68	58.15
May			5.69	57.40
June	43.45	44.45		59.75
July		45.60		
August	43.50	45.00		

Trend - Cattle are Stronger, Hogs are Stronger, Potatoes are Steady, and Eggs are Stronger.

Markets Provided by Commodity Department Reynolds Securities, Inc.

Chicago Grain Futures

(Closing bids as of Thursday, October 17)

	Corn	Wheat	Soybeans	Soybean Meal
November			8.03½	
December	3.81	5.21		171.40
January 1975			8.24	176.80
March	3.91	5.40½	8.36½	181.80
May	3.96	5.41½	8.47½	187.50
July	3.97½	5.00	8.53	187.00
September	3.88	5.06	8.00	177.00
December	3.47	5.14		

Trend - Corn is Stronger, Wheat is Mixed, Soybeans are Stronger, and Soybean Meal is Stronger.

Markets Provided by Commodity Department Reynolds Securities, Inc.

U. S. Inspected Livestock Slaughter

Estimated Daily Livestock Slaughter Under Federal Inspections

	CATTLE	HOGS	SHEEP
Week to Date	476,000	1,098,000	127,000
Same Period Last Week	529,000	1,161,000	148,000
Same Period Last Year	491,000	1,193,000	150,000

THIS PRODUCT AND OTHER Products of Progress

DISTRIBUTED IN THE NORTHEAST BY . . .

NEWFIELD, N.J. 08344 Area 609 Phone 692-4400
Binghamton, N.Y. Lewisburg, Ohio
Broadway, Va. Salisbury, Del
Littitz, Pa.

Write or call for a list of Local Dealers

If you have fat cattle or need feeders . . .

THINK NEW HOLLAND

BEEF SALES

MONDAY 2:30 P.M.
THURSDAY 12:00 NOON

Sale Order - Fat Bulls, Steers, Stockers, Beef Cows and Veal Calves

NEW HOLLAND SALES STABLES, INC.

Phone 717-354-4341

Daily Market Report Phone 717-354-7288

Abe Diffenbach, Manager

Field Representatives - Bob Kling 717-354-5023

Luke Eberly 215-267-6608

We have it in stock, now!



Takes the guesswork out of worming

TRAMISOL®

levamisole phosphate
INJECTABLE SOLUTION
the first injectable dewormer for cattle

New TRAMISOL is this easy to use:

1. Dose: 2 cc. per cwt.
2. Pull the trigger
3. The job is done



AVAILABLE FROM YOUR FAVORITE ANIMAL HEALTH SUPPLIER