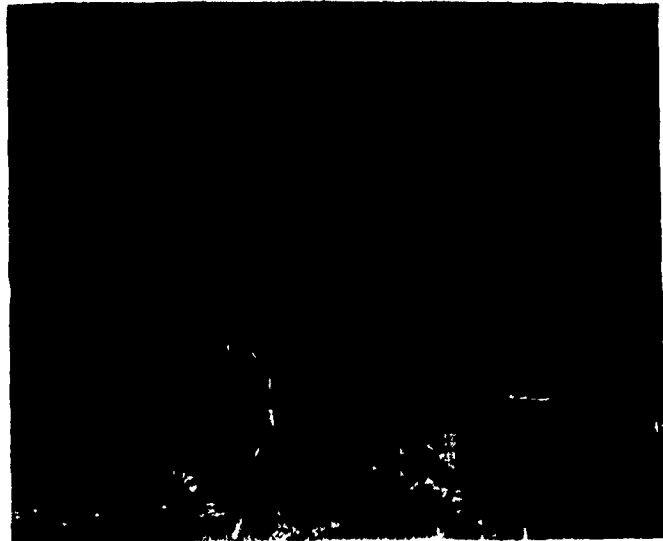


Strasburg Farm Women Make Arrangements



Intent on their work, members of the Strasburg Area Farm Women, No. 28 are shown as they begin the first in a series of intricate steps which ultimately leads to the creation of a lovely dried flower arrangement under glass. The Thursday evening class (Oct. 24) consisted of about 21 members of the group.



Star flowers, bell flowers, button flowers, cedar -- all these and more were used to make the beautiful dried flower arrangements under glass domes photographed during a craft class at Stauffer's of Kissel Hill. Mrs. Rhoda Oberholtzer, co-ordinator of crafts at Stauffer's and instructor for the evening's class, said that the project usually takes about one and one half to two hours to complete.



Ruth Nolt, assistant craft instructor at Stauffer's of Kissel Hill, assists Nancy Esbenshade as she begins her dried flower project. Members of the Strasburg Area Farm Women's group were asked to bring their own glass containers for the class in order to provide variety in the resulting arrangements under glass.



DO YOU KNOW HOW MUCH MILK YOUR COWS CAN REALLY GIVE?

A cow is a factory. She eats grass, hay, silage, grain and Wayne Feeds. She makes milk. Each cow-factory has a certain bred-in capacity. When Bossy's assembly line isn't running at full capacity, she isn't making as much money for you as she should. ■ The way to find out if she's really running at full capacity is to put more feed in and see if you get more milk out. FEED HER ACCORDING TO WHAT SHE COULD GIVE TOMORROW, instead of what she gave yesterday. ■ Wayne can show you how to balance these larger feed intakes so that your cows can handle them. You feed the rumen bacteria too, so they can work harder and digest more roughage. ■ See us now for the Wayne Program that will work for you . . . choose from our quality Wayne Feeds . . . Wayne supplements and complete feeds to meet your needs . . . do it today!

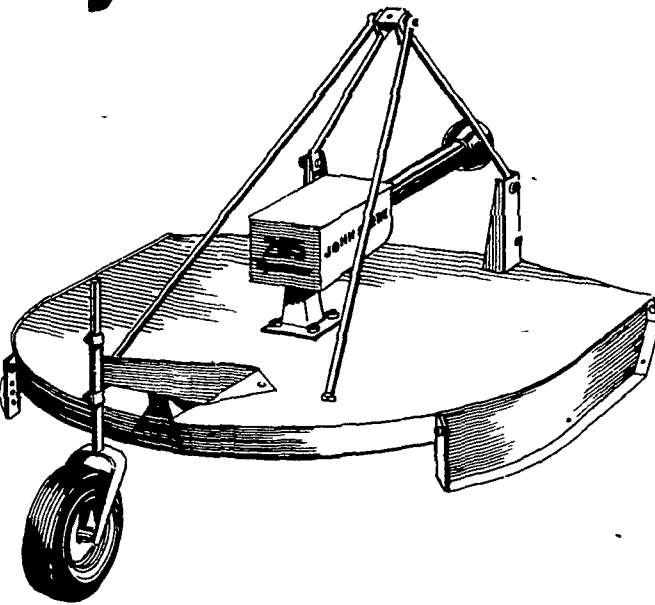
GET ALL THE MILK YOUR COWS CAN GIVE!

USE WAYNE ANIMAL HEALTH AIDS TO KEEP YOUR LIVESTOCK AND POULTRY HEALTHY



- | | | |
|--|--|---|
| HERSHEY BROS.
Reinholds | J C WALKER & SONS
Gap, Pa | ROHRER'S MILL
R D 1, Ronks |
| STEVENS FEED MILL INC
Stevens, Pa | PARADISE SUPPLY
Paradise | JE'MAR FARM SUPPLY INC.
Lawn — Ph 964-3444 |
| HAROLD H. GOOD
Terre Hill | VAN-MAR FEEDS INC.
Leesport Pa | WHITE OAK MILL
R D 5, Manheim |
| POWL'S FEED SERVICE
R D 2, Peach Bottom | MOUNTVILLE FEED SERVICE
R.D 2, Columbia | DUTCHMAN FEED MILLS, INC.
R D 1, Stevens |
| BRANDT'S MILL SADDLERY SHOP
830 Maple St
Lebanon, Pa 17042 | H. M. STAUFFER & SONS, INC.
Wiltmer | CHARLES E. SAUDER & SONS
R D 1, East Earl |

205 "Special" Gyramor®



John Deere quality for the price of an ordinary rotary cutter

Economy priced, you bet! But not at the expense of sacrificed quality. The 3-point-hitch-mounted 205 "Special" comes with an adjustable disk-type slip clutch, hardened and reversible blades, and a fully-shielded powershaft that runs on long-wearing needle bearings. It also has a malleable gearbox with precision-cut, case-hardened gears running in oil. Come on in now and check out the low price of a 5-foot-cut 205 "Special"

ADAMSTOWN EQUIPMENT INC.
Mohnton, RD2, Pa. 19540
[near Adamstown]
Phone [215] 484-4391

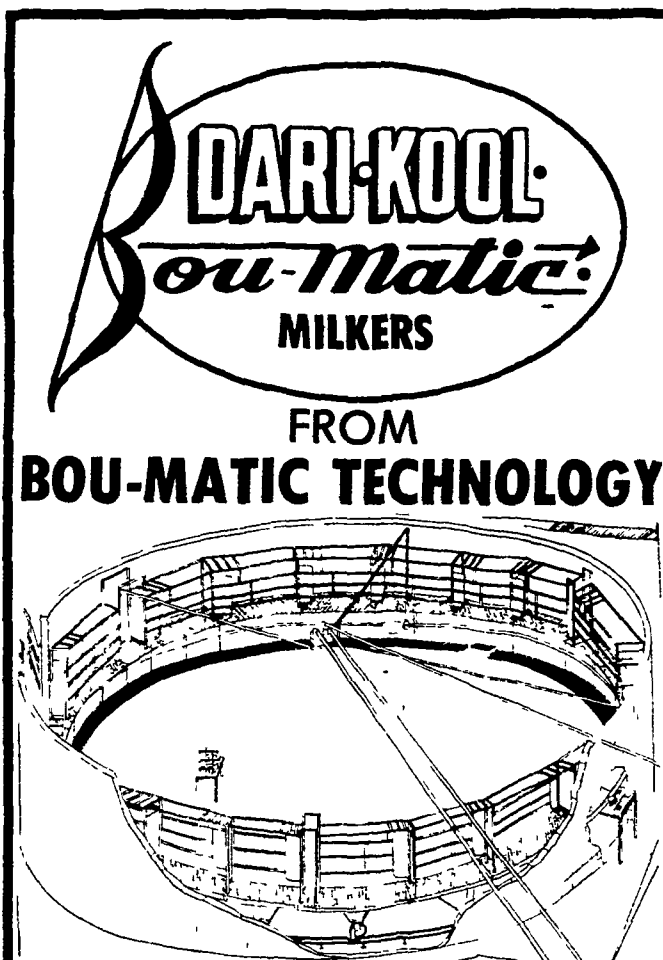


A. B. C. GROFF, INC.
New Holland 354-4191

LANDIS BROS. INC. Lancaster 393-3906 **SHOTZBERGER'S** Elm 665-2141

M. S. YEARSLEY & SONS
West Chester 696-2990

TRY A CLASSIFIED AD



18 STALL BOUMATIC TANDEM ROTARY

- Will milk 175 to 200 cows per hour
- 13 Stall Rotary
- Will milk 100 to 125 cows per hour
- 8 Stall Rotary
- Will milk 65 to 80 cows per hour

WILL SHOW IN OPERATION IF INTERESTED

- PROFESSIONAL INSTALLATION AND SERVICE
- PIPELINE SYSTEMS
- AUTOMATED HERRINGBONES
- AUTOMATED CAROUSELS
- AUTOMATED POLYGONS
- CROWDING GATES
- STIMULATION STALLS
- MILKERS
- AUTOMATIC DETACHERS
- VACUUM PUMPS
- BULK TANKS
- PIPELINE WASHERS
- PRE-COOLERS
- REPLACEMENT PARTS, BOU-MATIC INSTALLATIONS
- AUTOMATED SIDE OPENING STALLS

Professional milking systems for the milking professional
COMPLETE PLANNING — INSTALLATION — SERVICE

SHENK'S FARM SERVICE
R.D.4, LITITZ, PA. PHONE 626-4355