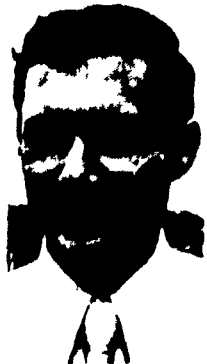


FACTS FOR DAIRYMEN

by
N. Alan Bair
Assistant
County
Agricultural
Agent



The Approach Of Winter

With fall weather upon us at a record early date, its not too hard to convince ourselves that winter is just around the corner. As a dairyman, there are many things you should do in preparation for the much colder weather ahead.

Most of our winterization has to do with buildings and equipment, but possibly the most important thing to do is care for the feeding and health of the cow. To stay alive financially this winter you no doubt will have to reduce grain feeding and full feed forages. Particularly if this is a new feeding schedule for you, be sure you properly supplement vitamins and minerals. Even though you are on a different feeding system, it still must constitute a balanced ration. Work closely with your veterinarian on a preventive medicine type of program. With very little effort and expense on your part, there are many things you can do to reduce the "profit robbers" of mastitis and parasites.

Of course, much of your preparation for winter will be concerned with facilities. Of top priority would be ventilation in the production and replacement housing. Taking care of winter ventilation does not just

mean stuffing the cracks and broken windows with feed bags. Proper ventilation in its simplest form consists of properly constructed fresh air inlets and properly sized and placed exhaust fans. This is not a place to cut corners or guess - install a system that is properly designed by a professional.

Exposed walkways can be hazardous to both humans and animals on an icy morning. For walks and entrances that cannot be covered, be sure the surface is roughened in an acceptable manner. If you find you must construct a ramp or inclined walkway that cows must utilize - try making a series of shallow but level steps. The cows much prefer the steps, and they are just as easy to scrape with a tractor.

Before freezing weather arrives its a good idea to clean up around the barn and discard the left-overs from summer. Many products can change over time or with varying temperature conditions such as freezing. Either dispose of or properly store such items as insect sprays, medications and other liquid preparations. Pay particular attention to the proper storage of teat dip if you are using one. Such items should not be stored for any length of time and now below freezing.

An additional piece of equipment that should be protected for the winter is the bulk tank compressor. Some manufacturers are not honoring their guarantees if the compressor has been subject to freezing temperatures! Check with your dealer on this for his recommendation. This compressor is a big investment that you rely on

every hour of every day.

And while we are getting ready for winter, don't forget new coats and boots for mom and the kids - they are a

pretty important part of your dairy operation.

Did You Know?

For every day over 85 days after calving in which it



DHIA MONTHLY REPORT

(Continued from Page 12)

HERD SUMMARY

OWNER—	NO. COWS	DAYS ON TEST	% COW DAYS IN MILK	LBS. MILK	% FAT	FAT LBS.
J. Ray Ranck R&GrH	32	32.3	91.7	54.4	3.8	2.06
Paul B. Zimmerman RH	28	36.1	84.4	50.0	3.9	1.95
Enos K. Miller R&GrH	32	34.0	96.2	56.5	3.3	1.88
Marvin L. Weaver R&GrH	27	28.3	87.7	50.4	3.7	1.85
Donald R. Bare R&GrH	32	42.9	91.1	50.5	3.7	1.85
C. Robert Greider R&GrH	34	64.4	97.5	52.6	3.5	1.83
Rufus G. Martin RH	32	26.9	76.7	47.0	3.9	1.82
J. Nelson Sangrey R&GrH	30	28.3	94.6	49.0	3.7	1.79
Donald S. Eby RH	32	49.0	88.6	43.8	4.0	1.77
Elmer E. Kauffman R&GrH	29	32.0	89.2	49.3	3.6	1.76
John N. Shirk R&GrH	43	33.2	97.2	48.5	3.6	1.76
Ellis D. Kreider R&GrH	29	53.7	91.1	43.9	4.0	1.74
J. Z. Nolt RH	36	34.8	74.2	45.4	3.8	1.74
Lancaster Mennonite Hospital R&GrH	30	88.2	89.0	47.5	3.6	1.72
Amos & Eleanor Hershey R&GrH	33	31.4	88.6	40.8	4.2	1.72
Paul V. Nissley R&GrH	40	61.4	89.8	46.1	3.7	1.72
Emanuel S. Smucker R&GrH	38	31.7	86.2	46.7	3.7	1.72

Lancaster Farming, Saturday, Oct. 19, 1974—13

takes to successfully breed a cow, it is costing at least one dollar?

The fastest, most practical way to improve your dairy herd is to breed to A.I. bulls with high Predicted Dif-

ference for milk, fat and type?

An extra pound of milk per day for a 305-day lactation would increase income about \$28 per cow?

SPECIAL OF THE WEEK

500 Gal. ESCO

\$800.00



NEW ICE BANK TANKS IN STOCK

NOW IN STOCK

12 Volt Controls

12 Volt Gear Motors

Used Bulk Milk Tanks

(Excellent Cond.)

500 gal. Dari-Kool
Ice Bank

Spudnicks

Kesco Milk Transfer
System

FOR BULK MILK TANK SERVICE

CALL COLLECT

Call Us At (717) 626-4355, (717) 626-5996
or Answering Service At (717) 733-1224.

SHENK'S FARM SERVICE

R.D.4, Lititz

Ph. 626-4355

Parade of the Profit-Makers

These Plus-Proven Sires Are Available Daily For Your Dairy Herd:



15H120 Harrisburg GAY Ideal Excellent & Production Qualified

222 Daus. in 127 Herds Ave. 15.959M 3.62% 578F
Pred. Dif. (91% rpt.) +1.068M +\$70 +32F
35 Classified Daus. Ave. 79.8; 24 Pr. — .23 PDT
Sire: Tidy Burke Jerry -- EX & PQ
Dam: Harrisburg Osborndale Sue -- VG (88)



15H161 Kanawaka EDUCATOR Very Good & Gold Medal

22 Daus. in 4 Herds Ave. 18.333M 3.79% 694F
Pred. Dif. (34% rpt.) +742M +\$52 +26F
17 Classified Daus. Ave 83.8; +1.55 PDT
Sire: Quin-Lynn Triune Prince -- VG & GM
Dam: Kanawaka Burkgov Lucky Mandy -- EX

135 DAIRY SIRES ARE NOW AVAILABLE THROUGH OUR PROFESSIONAL TECHNICIAN SERVICE!

Atlantic

LIVESTOCK SERVICES BREEDERS COOPERATIVE

Member — NAL Affiliated Breeders

Call for service and information:

CLEONA* 273 6763
Elizabethtown 367 3923
Hummelstown 566 2569
COATESVILLE* 384 2741
Parkesburg 857 5545
Oxford 932 9361
Pughtown 469 9238

LANCASTER* 569-0411
Akron 859-2552
East Earl 445-4131
Gap* 442-4471
Mount Joy 653 1451
Quarryville 786 7381

READING* 376 8297
Lebanon* 273 6763
YORK* 792 0941
Brogueville 927 6210
Fawn Grove 382 4805
Seven Valley 428 2266
York Springs 528 4426

*24-hour answering service or recorder