

Harding To Head Farm Credit Organization

The Federal Farm Credit Board recently announced the appointment of W. Malcolm Harding as Governor of the Farm Credit Administration, effective November 1. The announcement of the selection of Harding, a career Farm Credit System official, was made by T. Carroll Atkinson, Jr., of Marion, South Carolina, Chairman of the Board.

Atkinson said Harding, 41, who has served the Farm Credit Administration as Deputy Governor and Director of Credit Service since January 1973, will be serving "at a most critical time and in a crucial area which will help determine whether the Nation's farmers will be able to meet food and fiber needs."

Harding succeeds E. A. Jaenke, who announced his resignation as Governor in June.

As Governor, Harding will be chief administrative officer of the agency which supervises nationally and in the public interest the cooperative Farm Credit System through which farmers and their cooperatives borrowed more than \$24 billion last year, nearly one-third of the total credit needs of American agriculture. The System is comprised of 12 Federal Land Banks and 553 Federal Land Bank Associations, making long-term loans; 12 Federal Intermediate Credit Banks and 433 local Production Credit Associations, providing short-term and in-

termediate-term loans; and 13 Banks for Cooperatives, providing a complete credit service to farmer cooperatives.

"Meeting agriculture's growing credit and capital needs represents a tremendous challenge in the years ahead," Harding said, "but I am confident that, in their Farm Credit System, farmers have fashioned the tools that can greatly assist in doing this job. We in the Farm Credit System are dedicated to it."

Atkinson noted that Harding is thoroughly familiar with the Farm Credit System, having served it at all levels. He joined the Farm Credit System in 1958 as assistant manager of the Federal Land Bank Association of Winston-Salem, North Carolina. Three years later, he moved to the Federal Land Bank of Columbia (South Carolina) as a credit analyst. He advanced to increasingly responsible positions in the bank and in 1967 became vice president for credit and appraisal. In addition, he became vice president for credit for the Federal Intermediate Credit Bank of Columbia in 1971.

As Deputy Governor and Director of Credit Service for FCA, Harding was responsible for coordinating the extension of credit by the banks and associations of the Farm Credit System and assisting them in developing loan, appraisal and credit standards.

A native of Yadkinville, North Carolina, Harding

earned an A.B. degree from the University of North Carolina and taught in the Davidson County (North Carolina) school system. Following two years' service in the U.S. Army, Harding returned to the family farm until accepting his first assignment with Farm Credit. He is married to the former June Baity and they have three children. The Hardings live in Vienna, Virginia.

On behalf of the Board, Atkinson expressed appreciation to Governor Jaenke for his outstanding service and leadership the past 5½ years, citing in particular his leadership in bringing about passage of a new charter act for the System, and for the fact that the System, despite a declining number of farmers, is serving more farmers than at any other time in this generation, while its loan volume has increased nearly two and one-half times.

Work

What you're doing is really not work—unless you'd rather be doing something else.

Products available from your local FEED and FARM SUPPLY DEALER serviced by New Holland Supply Company

PSU Slates Meeting On Poultry Waste Conversion

A symposium on converting poultry waste to useful materials will be held on November 6 at Penn State. Herbert Jordan, associate professor of poultry science extension, is general chairman for the event. Participants will hear about and discuss means for converting poultry waste to energy, feed and fertilizer.

Topics to be covered include: the mechanics of air drying; fermentation as a feed production method; marketing converted manure; using poultry manure on crop land; and methane production from manure. The symposium

will end with a tour of the housing system developed by Dr. Glenn Bressler, professor of poultry science at Penn State.

Registration for the symposium should be made in advance. The registration fee of \$20 covers instruction and instructional materials, a copy of the proceedings, and a luncheon. To

guarantee acceptance, the registration form must be received by October 31. Forms are available from your local county agent.



In parts of Ireland, iron is considered such a sacred metal that thieves will not steal it!

THIS PRODUCT AND OTHER
Products of Progress
DISTRIBUTED IN THE
NORTHEAST BY . . .

NEWFIELD, N.J. 08344
Area 609 PHON 692 4400
Binghamton, N.Y. Lewisburg, Ohio
Broadway, Va. Selbyville, Del.
Llitz, Pa.

Write or call for a list of Local Dealers

We have it in stock, now!

TRAMISOL[®]
levamisole phosphate
INJECTABLE SOLUTION
the first injectable dewormer for cattle

New TRAMISOL is this easy to use:

1. Dose: 2 cc. per cwt.
2. Pull the trigger
3. The job is done

AVAILABLE FROM YOUR FAVORITE ANIMAL HEALTH SUPPLIER

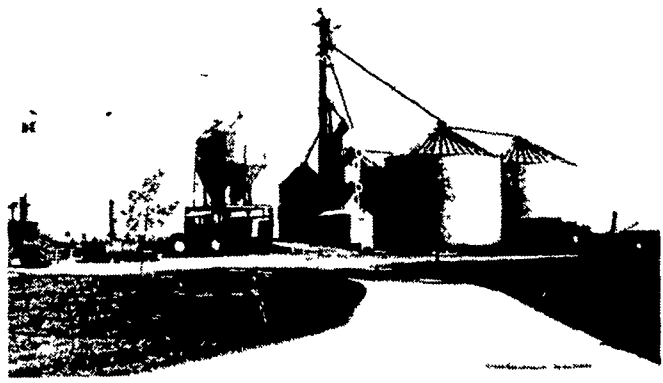
ANOTHER - Buy-Rite Realty EXCLUSIVE

982 ACRE GRAIN FARM

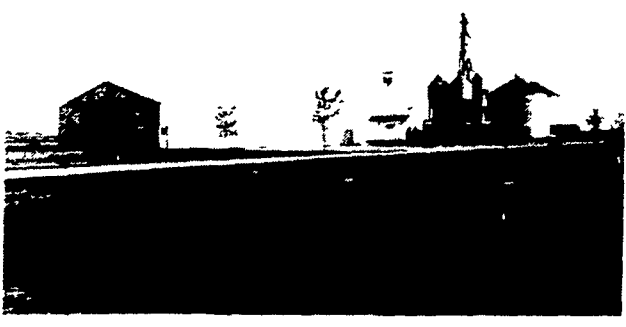
982 acres of the primest limestone bottom ground to be found anywhere. This happens to be located in far southern Minnesota on the Iowa border. Good sweet kind of soil that warms up early in the spring, and is mellow to the plow and the seed put into it.

Good level kind of ground with built in natural limestone kind of drainage and also the latest (1974) tile drainage wherever it needed it.

Eighty Five Thousand bushel storage and Seven Thousand bushel per day drying facility. These facilities are ultra-modern and of the latest design.



GRAIN STORAGE & DRYING FACILITY



LARGE MACHINE SHED & SHOP



BARN YARD



110' x 48' 2 LEVEL HOUSE



303 Elton Hills Drive N.W.
Rochester, Minnesota 55901 Telephone 288-6909

