

# Public Sales Register

[Continued from Page 58]

of Farm and Chicken equipment, Furniture 11 A.M. Real Estate 2 P.M. located approx. 3½ acres. Sale by Fair View Farm and Stables, turnpike Road, three miles west of Elizabethtown, Pa. Sale by Mr. & Mrs. Melvin Ressler. Auctions. Stone and Kilmer.

SAT. SEPT. 28- 12:00 Noon Public Auction at Great Oak Estates, Chestertown, Md. Sale by Mrs. & Mrs. Frank C. Russell, owners, Great Oak Estates, Chestertown, Md. H. Rudnick and Sons, Inc.,

Galens, Md. Auctioneers.

SAT. SEPT. 28 - 2 p.m. Public Auction of Outstanding Potential 24 Acre Farmette located in the Garden Spot of the World, the no. 1 Tourist County of Pennsylvania. Location: 3 miles southeast of Lancaster; one and one-half miles south of Route 30 (turn at Garden Spot Gifts), onto Strasburg Pike, 279 Strasburg Pike, East Lampeter Township, Lancaster County, Pa. Sale by the order of Amos L. and Edna L. Sheaffer; L. Robert

Frame, Auctioneer, Whitford Sales Company.

SAT. SEPT. 28 - 2 P.M. Public Sale of Valuable Real Estate located 3 miles west of Manheim, ½ mile East of East Fairview Church of the Brethren, along Hossler Road, Rapho Twp., Lancaster Co., Pa. (Known as village of Naumanstown). Sale by Abram Miller and Esther Miller; Rufus Geib, Auctioneer.

SAT. SEPT. 28 - 10 A.M. Public Sale of 52 Valuable Reg. and Hi-Grade Holsteins Dairy Cattle, Farm Machinery and 86 Acre High Producing Dairy Farm located 15 miles South of Williamsport, ½ mile East of Muncy, Pa. along the Rt. 147 Beltway. Sale by Joe Waltman and Lois Holzworth, Exe; Max Fraley, Auctioneer.

SAT. SEPT. 28- 2 P.M. Complete Liquidation of Valuable Real Estate, Hulls Stage Coach Inn located on Rt. 72 North of Manheim; Hosler and Witman, Auctioneers.

SAT. SEPT. 28 - 12:30 p.m. Paul Burkholder Holstein Dispersal Auction of 52 Registered and High Grade Holstein Dairy Cattle. Take Route 422 East from Lebanon to Womelsdorf then Route 419 North, past Four Points Hotel, to old Route 22, take old Route 22 East through Strausstown, approximately 5 miles east of Strausstown turn South at

Hillcrest Campsites 1 mile to Farm on left. Look for Sale Arrows. Sale by Paul Burkholder, RD1, Bernville, Pa. John E. and Paul E. Martin, Auctioneers.

SAT. SEPT. 28- 10 a.m. Public Sale, Noble Farm Dispersal, 86 acre Dairy Farm, 51 Registered and Hi-Grade Sire Power Dairy Cattle, line of Machinery, some Household Goods, located 15 miles South of Williamsport, Pa., ½ mile East of Muncy. Just off 147 Beltway and 405 below the Muncy Valley Hospital. Sale by Joe H. Waltman and Lois Holzworth, Exe; Max Fraley and Son, Auctioneers.

SAT. SEPT. 28- 10 a.m. Cloverdell Complete Dispersal, South Montrose, Pa., Bridgewater Twp., Susq. Co. Farm located 2 miles East of South Montrose and Penna. Rt. 29, 3 miles South of Montrose and Penna. Rt. 706, 18 miles North of Tunkhannock, Pa. Sale by Mrs. John Peterson, owner, Montrose RD, Pa. Merton L. Bunnell, Auctioneer.

MON. SEPT. 30- 7 p.m. Annual Fall Special Feeder and Replacement Cattle Sale at the Woodstock Livestock Market, Inc., U.S. Route 11, Woodstock, Va.

MON. SEPT. 30 - 12 Noon Bankruptcy Sale Matchmaker, Inc., Bankrupt, Lancaster Pike (Rt. 48 West) Hockessin, Delaware. (Past Hercules Country Club) at "Coffee Run Shopping Center". 5 miles West of Lancaster Pike (Rt. 48) from Intersection of Rt. 141. Rudnick & Matas, Auctioneers.

TUES. OCT. 1 - 1 P.M. Special Graded Feeder Pig

Sale at the Lancaster Stock Yards, Inc., Lancaster, Penna.

TUES. OCT. 1- 7:30 p.m. 2nd Yearling Steer Sale at Narrows Livestock Auction Market, Inc., Narrows, Virginia.

TUES. OCT. 1- 6 p.m. Public Auction of Furniture, Glassware, Appliances, etc. located at Farmersville, 3 miles East of Brownstown, Lancaster Co. Sale by John J. Rutt, Richard Murray, Auctioneer.

WED. OCT. 2 - 10 A.M. Annual Livestock Cow Show and Sale at Belleville Livestock Market. Location - On Rt. 655 between Lewistown & Huntington, Pa. Show Judging 10 A.M. and Sale 1:00 P.M. Mark Glick, Auctioneer; Sherman Glick, Sales Mgr.

WED. OCT. 2- 10:30 A.M. Complete Dispersal located on Route 1 three miles from Nichols, N. Y. Watch for auction arrows off Route 17 at Nichols exit 62. 90

[Continued on Page 60]

## 1ST ROANOKE FEEDER CALF SALE

THURSDAY, OCT. 3, 1974 at 7:00 P.M.

1600 HEAD

STEER & HEIFER CALVES

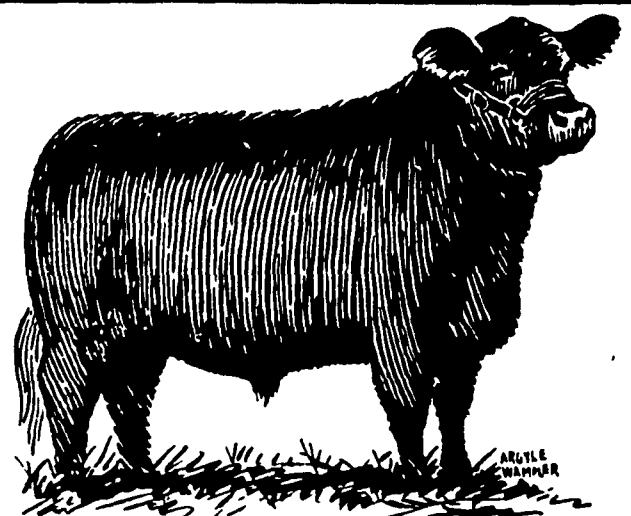
ALL BREEDS

STATE SPONSORED and STATE GRADED

For information contact.

Roanoke-Hollins Stock Yards

Box 7005, on US Route 11 north of Roanoke Hollins, Virginia 24019 Joe Graham, Manager, Phone: (703) 992-1112



## DON'T MISS THE 9th ANNUAL FEEDER CATTLE SALE

DANVILLE LIVESTOCK MARKET

Old Rt. 11 Danville, Pa.

Friday, October 11, 1974 - 7:30 P.M.

State Graded Sale

BE SURE TO ATTEND IF YOU WANT TOP QUALITY FEEDER CATTLE.

For Additional Information Call Mel Lehman (717) 964-3621

## PRODUCTION SALE SATURDAY, OCTOBER 12th at 1:00 P.M.

### 60 CERTIFIED CHAROLAIS CATTLE

BY STAUFFER HOMESTEAD FARM

At the Farm located off Route 23 Just South of Goodville, Five miles East of New Holland

### SIXTY ¾ - 7/8 - 15/16 percentage Charolais Offered

- 6 - Two year Bulls and 4 - Bull calves
- 20 - Bred heifers to calve April and May 1975
- 10 - Bred cows to calve spring and summer 1975. Some 3 in One combinations
- 8 - Open heifer calves
- 15 - Steer calves - 4 H and FFA Prospects
- 1 - Chianana-Swiss bull calf

#### HERD SIRES

##### OLENTANGY VEIJO MITCH — POLLED (scurs)

Son of MGM Mitch - a bull with good length with an excellent record of siring polled calves.

##### DOUBLE E GENA 9th — POLLED

Son of Royal Beaver - half brother of 1969 Champion carcass steer at Nat'l Beef Show - sire of reserve carcass steer at 1973 Keystone International

##### SAM DESSAUNY — POLLED

Grandson of the Great Sam Bull and Ali Baba Dessauy HOMESTEAD SAMPSON 403 — POLLED (scurs)

A grandson of Sam and Gena

##### CHAMP RUE DESSAUNY — POLLED

A son of Super Dess bull out of a Diamond cow

New Holland Sales Co.

Elizabeth Groff Miller

Earl S. Fisher

Auctioneers

Owner

Farm Manager

For sale catalog write to:

Stauffer Homestead Farm c-o Elizabeth Groff Miller

109 East Conestoga Street

New Holland, Penna. 17557

Phone 215-445-6209

## MODERN-ACRES FARM COMPLETE DISPERSAL TUESDAY, OCTOBER 8

OXFORD, PA.

(11:00 A.M.)

Farm is 3 miles south of Oxford, Pa. on Limestone Road (road to North East, Md.) About 38 miles southeast of Lancaster, Pa.

### 140 REGISTERED HOLSTEINS

(75 Milking Age - 15 Bred Heifers - 30 Op Yrlds. - 19 Younger Hfrs. - 1 Bull)

All tested for immediate shipment interstate. Exam for Preg. & Mastitis.

TOP PRODUCTION SELLING HERE!!

- 1 with 843-lbs. fat.
- 4 from 726 to 763-lbs. fat.
- 13 from 606 to 680-lbs. fat.
- 22 from 507 to 596-lbs. fat (Many at 2 yrs.)
- 12 from 453 to 497-lbs. fat (All at 2 yrs.)
- Others on test with first calf.

Herd formerly on DHIA, presently on AM-PM.

DAUGHTERS OF THESE FAMOUS SIRES SELL!!

11 by Penstate Ivanhoe Star - 10 by Kilinsdale Ivanhoe Jack - 8 by Romandale Dividend Performer - 13 by Optimist - 8 by Hector - by Archie - 7 by Bonus - M&H Ivanhoe 10 - 4 by Kenny and others in Atlantic Stud.

SERVICE SIRES INCLUDE -

9 to Optimist - 2 to Ivanhoe Star - Glenafton Hercules 4 - 4 by Producers Comet - 3 to Van and others.

THIS IS A GOOD UDDERED HERD THAT IS READY TO MILK FOR YOU AND KNOWS HOW!!

YOU WILL LIKE WHAT YOU SEE HERE IN THIS COMPLETE DISPERSAL!!

MAKE SURE YOU ATTEND!!

JOSEPH S. & META BAILY

Owners, Oxford, Pa. R.D.2

Auctioneers R. AUSTIN BACKUS INC.

Mexico, N.Y.

For Credit, see Sale Arranger CHARLES C. MYERS 2220 Dairy Lane Lancaster, Pa.