

Farm Writers Tour

(Continued from Page 54)

strains of pathogens (disease-producing microorganisms or viruses) can be found," Smith explains. "Research can then be initiated that can lead to sound corrective measures."

But a monitoring program can be a big job. Diseased corn specimens from all corn-producing areas of the country must be collected, cataloged and diagnosed and the disease-causing pathogens evaluated.

Dekalb research, production and sales personnel collect vast numbers of diseased corn specimens in a predetermined scientific manner and immediately send them to corn pathology laboratories.

Smith explains that this season 25 genetic stocks of corn were grown at 22 U.S. locations chosen for their accessibility and variability in terms of local en-

vironment. Genetic stocks are comprised of uniform lines of corn that have known reactions to many diseases. They range from exceptionally susceptible to others.

At seven of the 22 locations second plantings were used to determine frequency of occurrence of various corn pathogens and to confirm results from first plantings.

Plots at each location were observed and sampled at least five times during the growing season. Sampling dates coincide with the relative maturity of the surrounding corn crop. They are: knee-high, mid-silk, two weeks after mid-silk, four weeks after mid-silk and harvest.

The first sampling can detect the presence of seedling blights or wilts. The next three samplings can detect the presence and increasing frequency of leaf diseases. The final sampling

can detect the presence of stalk and ear rots.

Smith explains that specimens are cataloged and diagnosed in laboratories under controlled conditions with specialized equipment. "This is where we identify the causal pathogen itself," he says. "Then we can take appropriate action."

The Promise of Hybrid Wheat

Hybrid wheat is fast coming of age. "Our research staff is coming up with some real promising hybrids," says Dr. James Wilson, director of Dekalb wheat research. "This fall we are releasing seven new hybrids for Kansas, Oklahoma, Colorado and Texas. We now have hybrids that are adapted to 50 percent of the wheat acreage in Kansas. That's six million acres."

Dekalb has been marketing hybrid wheat since the summer of 1972. One strain is adapted to the hard red winter wheat area of Montana. Two others are marketed in Oklahoma and Texas. None have yet been developed for the Northeastern areas of the U.S. "Hybrid vigor is really showing up in our field trials. The hybrids germinate fast and continue that growing pace all season," reports Wilson.

During 1973 the company released its first dual-purpose hybrids developed for both grazing and grain, in Texas and Oklahoma. "Our

Couples to Compete For Grange Award

The Pennsylvania State Grange's young married couple of the year — to reign for 1974-1975 — will be crowned Saturday, September 21, at ceremonies to be held at Edgewater Acres, near Huntingdon.

The crowning will climax the fifth annual Grange conference for young married persons to be held

dual-purpose hybrids are bred to produce lush forage during the cool season as well as excellent grain yields in the summer," says Wilson. "Under grazing pressure these two hybrids perform very well, and have enough vigor left after the grazing operation to go ahead and produce excellent grain yields," he adds.

"In addition to their increased productive characteristics, hybrids have also consistently shown the ability to increase the protein content in grain over other wheats when grown under identical conditions. Differences seem to vary with the nitrogen availability in the soil as one would expect, however, the capacity to increase protein content while increasing yield is a new phenomenon to the wheat farmer," Wilson concludes.

Topics for discussion include marital relations and Grange ritual.

Readinger, the state master, will speak at the crowning ceremonies Saturday night.

The newly selected young married couple will compete for national honors at the National Grange convention in Columbus, Ohio, in November 1975. The reigning couple, Mr. and Mrs. Alfred Stewart, of West Springfield RD1, Erie County, will compete at the 1974 National Grange convention at Sacramento, Calif., this November.



GAP AUCTION

FRIDAY EVENING, SEPT. 27, 1974
- 6:00 P.M.

Located Off Route 41 - Lancaster Ave. Opposite Turkey Hill Minit Market - Cross RR Bridge.

ANTIQUES SOLD AT EVERY AUCTION

Inspection Friday from 9:00 a.m. until sale time
CONSIGNMENTS ON MONDAYS OTHER DAYS BY APPOINTMENT
FROM 8:00 A.M. TO 7:00 P.M. Call us for pick-up service

IRA STOLTZFUS & SON, Auctioneers

442-4936 or 442-8254

CONDUCTORS ALL TYPES PUBLIC SALES

PUBLIC SALE

"NOBLE FARM DISPERSAL"

Including Good Fertile River Bottom 86 Acre Dairy Farm, 51 Registered and Hi-Grade Sire Power Dairy Cattle, Line of Machinery including 5 IH Tractors, Produce, Some Household Goods to be sold first.

On farm 15 miles South of Williamsport, Pa. 1/2 mile East of Muncy. Just off 147 Beltway and 405 below the Muncy Valley Hospital.

SATURDAY, SEPT. 28, 1974

Starting at 10 A.M.

IH 656 Gas Hydro-Static tractor fully loaded only 790 hours, excellent; Int. 2000 heavy duty loader; 2 M's Sup. H; H Tractors; IH 4-16" 540 plows; IH 3-14" trailer plows; 2-12' tractor harrows; 12' single cultipacker just new; 12' Dbl. Disc; N. H. 36' flail chopper, good; N.H. 27 blower w-64' of pipe just new; 2 N.I. PTO spreaders; IH 249 corn planter; IH 15 rake; 2 Cobey 20' wagons w-hay sides just new; Cobey 540 wagon w-Cobey forage box just new; IH 16-7 hoe drill; other wagons; N.I. 251 7' mower; IH 2A conditioners; IH 76 7' combine w-bin; Avco N.I. 323 1 row picker just new; 1966 Int. 300 T tag dump truck; Lincoln 225 welder; Kingwyse 34' elevator w-motor.

Herd consists of 25 Registered Holstein Cows. 15 Kingpin Daus., 5 Gents, etc.

12 Hi-Grade Cows. 75 percent of these cows to freshen Sept., Oct., and Nov.

9 Beautiful Reg. Holstein Heifers due Sept., 4 yearlings.

3 Beef type steers.

Cows very large - selling 6 year old Lovely Park Chester F Admiral Rouch Dau. that milked 80 lbs. as a 2 yr. old - that weighs over 1800 lbs. due near sale time.

Cattle have condition - Some milk 80 to 90 lbs. when fresh. T. B. and Bangs Certified. Pregnancy checked.

Jamesway 500 gal. Bulk Tank; 3 DeLaval Magnetic units; DeLaval 4 unit pump; small dairy equipment.

8000 Bales Alfalfa-Broom Grass-Timothy Hay - good; 700 bales Wheat Straw; 3000 bales 1 year old Hay and Straw; 4 tons of Ear Corn; over 1000 bu. of good Barley; 30 acres of standing - good corn to be sold by the acre; 14' of corn ensilage in 20' silo to be sold by the foot; 3 tons of bulk salt; etc.

Real Estate 1:30 P.M. Beautiful 86 acre River Bottom Dairy Farm with large yellow bank barn, attached enclosed straw shed, attached lean to shed, approx. 30 x 70' feeder shed, 20x64' N. Star Silo, other tile silo; 20 stanchions, tie stalls, etc., wagon shed, beautiful 9 room 4 bedroom 2 1/2 story brick w-2 fireplaces and large rooms, oil hot water heat, 3 porches, etc. Farm set up for automatic feeding. Ideal for Dairy-Horse-Beef of produce farm that grows excellent Alfalfa. To view property call 717-546-6631. Real Estate Terms: \$10,000. down upon striking down of property. Balance 30 days. Recorded Lycoming Co. Court House, Vol. 294, page 136.

To be sold after the Real Estate - 20' Jamesway silo unloader, Jamesway 25' ensilage elevator, 50' James J. Volume Belt Feed, excellent; 3-2400 bu. wire cribs just new.

Terms - Cash or good check day of sale.

Exe.

Joe H. Waltman & Lois Holzworth

Auct. - Max Fraley & Son
Ph: 717-546-6631

Tent - Lunch

SPECIAL FALL FEEDER SALES

Friday Evenings At 7:00
September 27
October 11 and 25
All-Charolais Show & Sale October 18
November 8, 15 and 22

VINTAGE SALES STABLES INC.

Box 100, Paradise, Pa. Lancaster County
The Heart of Pennsylvania
Steer Feeding Country
Anyone Wishing to Consign Cattle Telephone:
Area Code 717-442-4181
KENNETH E. HERSHEY, MANAGER

PUBLIC SALE OF REAL ESTATE

112 Acre Farm more or less
Thurs. Eve., Sept. 26, 1974

7:00 P.M.

Located along Cloverleaf Road. 3 miles Northeast of Elizabethtown, Pa. Get off 283 bypass at Rheems & Milton Grove interchange turn North.

No. 1 Large Bank barn, implement shed, Corn Barn tobacco Shed w-cellar & stripping room Hanged 6 acres, Silo, 4 car garage, 100 acres of tillable, 12 acres of Pasture has Stream. Steer farm, it could be made in to Dairy.

2 1/2 Story Stone Dwelling

10 Room House w-bath, Large porch, Summer House, attic, cellar.

No. 2 Thurs. eve. September 26, 1974. 7:00 P.M. Located just off Cloverleaf Road along Mt. Pleasant road. 3 miles Northeast of Elizabethtown, Pa. get off 283 bypass at Rheems & Milton Grove interchange turn North.

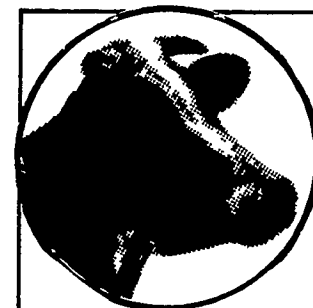
2 1/2 Story Block Dwelling

8 room House w-Bath, Coal Furnace. 2 car garage, attic, cellar. To inspect both properties call 717-553-5689. We will be selling both properties at No. 1, No. 2 will be sold first. Real Estate to be offered at 7:00 p.m.

Sale By

BLAIN R. GANTZ

Carl G. Herr, Atty.
Harold (Abe) Shaffner Auct.



BLACK and WHITE HOLSTEIN FARM

2220 DAIRY ROAD
LANCASTER, PENNA.

CANADIAN WISCONSIN MINNESOTA

DEALERS IN TOP GRADE DAIRY COWS

Dairy Cattle Auction Sale 3rd Friday Night Every Month

CHARLES C. MYERS, Owner Phone 717-569-2106
717-569-6800

Park Myers, Sales Mgr.

Private Sales Daily

MR. DAIRYMAN

LEASE DAIRY CATTLE

Find out about the advantages of our lease purchase plan. We have been helping dairymen like you grow and prosper for over 11 years.

- Select Quality Cattle
- Death Loss Replacement
- Culling Privileges
- Representative in your Area
- Canadian Cattle Available

To find out more about these and other features, Write or Call: **DAIRY COWS**

Flying Farmers Bldg., Wichita, Kansas 67209
(316) 942-1468

PUBLIC AUCTION

Having decided to discontinue farming, I will sell on the Farm located in Turners Creek (Cove Lodge Farm). Enter at Bloomfield Farm Sign and go straight back. Signs from Kennedyville, Md.

MONDAY, SEPTEMBER 23, 1974
12:00 NOON

FARM MACHINERY ALLIS CHALMERS D17 Diesel TRACTOR, JOHN DEERE 70 Diesel TRACTOR, JOHN DEERE 50 gas TRACTOR w/loader, AC grader blade, AC 3 x 16 mounted plows, JD 3 x 16 plows, JD 14T Baler, JD ram, Int grain drill, Int 4 row planter, Int running gear, Int PTO spreader 30' elevator w/gas motor, Ford 612 Forage harvester, DB flat wagon Oliver 11' disc (road), 10' cultipacker, Gehl-short Blower & pipe, Papec chopper w/2 heads, Grove running gear, Gas forage harvester, Oliver 7' mower, Case Spreader, 2 Wood Bros. pickers, Moline 12' disc, 2 sets JD 2 row cultivators, Case PTO forage wagon and many other items

MILK EQUIP Zero 400 gal Vac Stamped tank, Auto washer, dumping station, 4 Surge milkers, strainers, buckets, SP22 Vacuum pump SS wash tanks, water heater (new) ALSO STARLINE 18x50 Silo unloader RIBSTONE 18x50 Silo (to be moved), 2 liquid Pro-mo tanks, 4 ton metal feed tank, etc

ROBERT L. MORRIS, Owner
Kennedyville, Md.

HARRY RUDNICK & SONS, INC.
SALES MANAGERS & AUCTIONEERS
LUNCH