

All American Dairy Show

The 11th Annual Pennsylvania All-American Dairy Show will be held at the Farm Show, September 23 through 27, under the joint sponsorship of the Pennsylvania Dairy and Allied Industries Association and the Pennsylvania Department of Agriculture. The All-American is recognized as a full-fledged member of the top circuit of inter-national dairy shows. In recent years exhibitors from more than half of the 50

states and Canada are entered for each show and at one time or another virtually every state in the union has been represented.

Adding prestige to this year's show will be the annual meeting of the National Dairy Shrine Club. Just two years ago, in a precedent-shattering move, the club held its annual meeting in Harrisburg during the Pennsylvania All-American, the first time it has ever met outside of the midwest in its 25-year history. Convening in Harrisburg two out of three years serves notice on the rest of the country that Pennsylvania is making a serious bid to become the dairy capital of the world.

Also, the Brown Swiss Cattle Breeders' Association has designated the Pennsylvania All-American as the site for its Eastern National Show for 1974, the second time in as many years. For a number of years the Holstein-Friesian Association has staged its Eastern National in conjunction with the big Farm Show dairy exposition.

Another highlight of the 1974 All-American will be the Dairy Princess pageant. More than 30 previous winners of county titles will compete for the state crown to be vacated by Marcia Gnagey, Somerset County. The number of contestants is

expected to at least equal last year's record-breaking 33.

Two recent innovations continue as a regular part of the 11th Pennsylvania All-American - Family Day and Railbird Judging. Sunday, the day before the official opening, is set aside as family day with a special invitation, particularly to the non-farm community, to come to the cattle barns at the Farm Show and get a look at the behind-the-scenes activity of a big-time agricultural exposition.

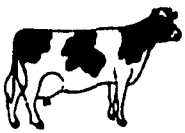
The twice-a-day railbird judging contests have been expanded to include recognition for 2nd and 3rd place finishers. Top prize in each contest will continue to be a trophy, but cash prizes of \$50, \$25, and \$15 have been added this year for the top three scorers.

The opening day of the All-American is dedicated to young people with state champion 4-H and FFA teams competing in the Invitational Youth Dairy Cattle Judging Contest. There is also an intercollegiate division with about 15 colleges and universities represented. At the same time, district and regional winners of 4-H and FFA dairy shows will be showing their prize stock in the Pennsylvania Junior - Dairy Show.

**TRY A CLASSIFIED AD
PHONE
626-2191 or 394-3047**



Some people used to use fig juice as a cure for ringworm and toothache.



COWCULATOR

VISIBLE DAIRY HERD RECORD SYSTEM

TOX-O-WIK

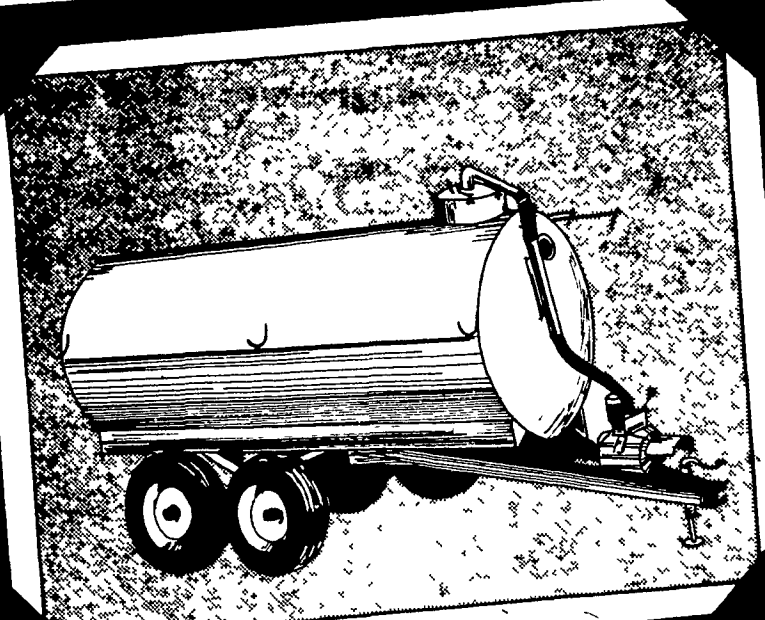
Livestock Supplies

- HIGH PRESSURE WASHERS. 2 MODELS
1,500 LB. PRESSURE, 1,800 LB. PRESSURE
- HOG OILERS
- CATTLE OILERS
- HEAVY DUTY CATCH GATES
- FEED BUNKS
- FACE FLY OILERS WITH MINERAL FEEDER

ELMER M. MARTIN

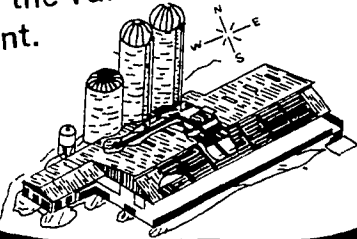
R.D.2, MYERSTOWN PHONE: 949-2081

THE VAN DALE FAMILY ALBUM.



VACUUM—THE CLEAN MACHINE

VanDale's Vacuum Liquid Manure Unit has all the features hog farmers want. Rugged, strong, easy to fill. VanDale engineering developed a 30 foot wide swath with no rooster combing or blow back on the operator. That's Clean. That's Vacuum. A very special part of the VanDale Family of Agrimotion equipment.



SOL-AIR FEED LOT SYSTEMS
CALEB M. WENGER, INC.
R D 1, QUARRYVILLE, PA. 17566
PHONE 717-548-2116

VAN DALE

Cattle Club Picnic

Tall Oaks, a campsite owned by Helen Kupp was a delightful setting for a picnic lunch and social hour which was enjoyed by former members and leaders of the Lancaster County Ayrshire, Brown Swiss and Jersey 4-H Club. There were 48 persons in attendance on Sunday, September 15.

ABS Tour TO WORLD DAIRY EXPO, Madison, Wisconsin

OCTOBER 3-5, 1974

See: ● American Breeders Service DEFOREST & MADISON, WISCONSIN

● World Dairy Expo

● Central National Holstein Show

● World Premier Holstein Sale

Leave: Harrisburg International Airport, 9:45 A.M. Thursday, return Saturday 5:00 P.M.

COST: \$120

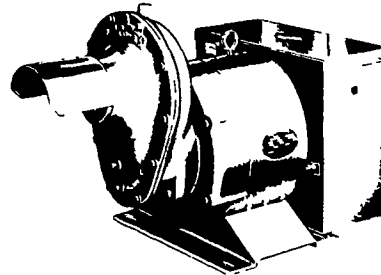
(includes air travel, lodging, most meals, bus travel while in Wisconsin)

**CONTACT:
GARY WILLIER**

206 Swarthmore Drive Lititz, Pa.
626-2909



WORLD'S LARGEST MFG OF TRACTOR-DRIVEN ALTERNATORS with 45 years continuous experience to give you the best quality unit for long years of service, and to protect your family against huge losses due to power outages, and brown outs.



Insure your Farm Operations against Power Outages.
Have experienced people install and service
CALL NOW
DISTRIBUTED BY

MARVIN J. HORST

R.D.1 (Iona) Phone 717-272-0871 Lebanon, Pa.
Located on Rt. 897 Between Schaefferstown & Lebanon
Over 30 years in business at same place.