

Grange Convention Set Oct. 28-31

Key issues affecting agriculture and rural affairs will be discussed by state officials at the 102nd annual convention of the Pennsylvania State Grange at Washington (Pa.) October 28-31.

State Senator Patrick J. Stapleton, of Indiana County, chairman of the Senate Agriculture Committee, will address the opening session in Trinity Area Senior High School at 4 p.m. Monday, Oct. 28.

State Agriculture Secretary James A. McHale will address the second-day session at noon Tuesday.

B. McClain Cochran, general secretary of the Pennsylvania Sabbath School Association, will speak at 3:15 p.m. Tuesday, Oct. 29. Milton W. DeLancey, executive director of the Pennsylvania Township Supervisors Association, will address the session at 9 p.m. Tuesday.

Grange delegates themselves will tackle the rash of problems plaguing agriculture in a series of committee reports and

resolutions to be acted on during the four-day convention.

More than 2,000 delegates, Grange members and Grange youth are expected to attend the sessions. The program will include a variety of talent contests, exhibits and competitions. Youth activities also will be emphasized and Grange youth officers will fill the chairs for the opening session Thursday, Oct. 31.

The convention will close Thursday afternoon with the election and installation of officers.

Host to the convention is the Washington county Pomona Grange, Lloyd L. Craft, master. Convention chairman is Vernon Cox, of West Alexandria RD2.

Business sessions of the convention will be held in the auditorium of the Trinity Area High School. Exhibits will be on display at the Ramada Inn, the convention headquarters. Junior and fifth degrees of the Grange will be conferred on candidates at the Fair Hills Manor Christian Church.

Credit Officers Gather At Seven Springs

More than 700 credit union officials, employees and guests from throughout the state have begun registering Thursday, September 12 for the 20th annual Management Conference at Seven Springs Resort Hotel, Champion.

Sponsored each year by the Pennsylvania Credit Union League, the two-day session is geared to the management needs of Pennsylvania's larger credit unions.

Conferees will be welcomed tomorrow morning by League President Joseph F. Matisko of Edwardsville, who will emphasize the need for credit unions of all sizes to keep alive their philosophy of service to humankind. The keynote address, "The Buck Stops Here," will be delivered by Harry E. Manzer, vice president of CUNA Mutual Insurance Society, Madison, Wis.

Among the Conference leaders and their topics are: Wylie Dougherty, president of ICU Services Corporation,

Madison, "Trends in the Money Market;" Leo Kane, president of Credit Management Company, Pittsburgh, "Delinquency and Collections;" Ray P. Buaschke, management consultant of Winnipeg, Manitoba, "Salaries and Job Descriptions;" and David J. Schwartz, Professor of Marketing, Georgia State University, "Management Needs for Tomorrow."

The program agenda and all meeting arrangements have been planned by the League Education Committee in cooperation with Richard A. Ebeling of Mechanicsburg, League education specialist. Members of the League

board of directors who serve on this committee are: William C. Seanor, Greensburg, chairman; Lee L. Sell, Reading, vice chairman; Crawford S. Cowan, Erie; Paul G. Demmer, Pittsburgh; Joseph D. Finn, Philadelphia; and Hugh E. Kelleher, Altoona.

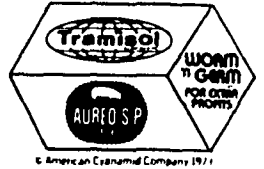
TRY A CLASSIFIED AD
PHONE
626-2191 or 394-3047

Stevens Feed Mill, Inc.
offers hog farmers in Lancaster county a new program to help keep your hogs "insides clean"

*Knock out worms with TRAMISOL, the wormer that gets the four major species of worms in the intestines, and lungs

*Maintain healthy hogs with feeds containing AUREO S-P 250. Improves weight gains and feed efficiency by helping to prevent scours, rhinitis and cervical abscesses

This year help keep your hogs "inside clean" with TRAMISOL and AUREO S-P 250. Call us today for more information about our

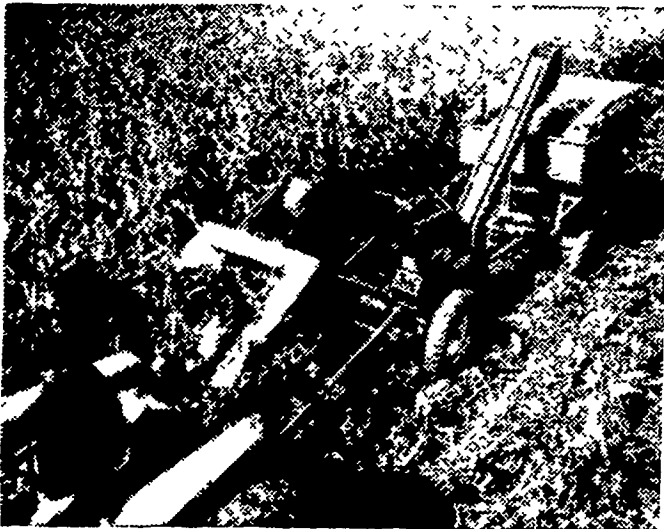


WORM 'N GERM program using

- Stevens Pig Grower JJ 250
- Stevens Hog Grower
- Stevens Hog Finisher
- Stevens Worming Feed

STEVENS FEED MILL, INC.
Stevens, Pa. Ph: 215-267-2150
or 717-733-2153

New Idea's Superpickers



Want

- Ear corn?
- Shelled corn?

You can have your choice with a 2-row Superpicker. For ear corn, choose the 8- or 12-roll husking bed. You'll get cleanly husked ears. For shelled corn you can specify the popular cage-type sheller, or the huge capacity Supersheller. Both are gentle and easy to adjust.

Interchanging any of these four processing units is done on the farm without special tools. So you can harvest part of your corn one way and part another. And, there are two gathering units; one for wide rows, one for narrow. Come in and let's talk Superpickers!



We make your job a little easier

UMBERGERS MILL
RD4 Lebanon
(Fontana)
717-867 8221

LANC EQUIP CENTER, INC
Kinzer Pa
717-442 4186 or
717-768 8916

A L HERR & BRO
Quarryville
717 786 3521

ROY H BUCH, INC
Ephrata R D 2
717--859 2441

CHAS J McCOMSEY & SONS
Hickory Hill Pa
215-932 2615

N G HERSHEY & SON
Manheim
717--665 2271

STOLTZFUS FARM SERVICE
Cochranville Pa
215-593 5280

LONGENECKER FARM SUPPLY
Rheims
717-367 3590

A B C GROFF, INC
New Holland
717-354 4191

LANDIS BROS., INC
Lancaster
717-393 3906

Some
HANG-UPS
are good
for you

Like this hanging turkey feeder from Big Dutchman. It's the solution to the problems of automation in breeder house feeding. Here's why:

1. Automated Simplicity — Proven, reliable Big Dutchman chain and trough delivery system brings feed to high capacity, large diameter hanging feeders through a fool-proof drop tube.
2. It's Not a Bruiser — It takes no floor space, and it leaves the whole house open to turkey traffic, yet it provides ample feeding space for every bird.
3. Versatility — Feed flow is easily adjustable for either breeding flock or finishing operation. Individual feeders can be shut off if desired, without any major equipment change. Maintenance requirements are few and simple.
4. Efficient — All birds have access to plenty of feed. Feed waste is greatly reduced by the feed-saving design of the pan and its lip. The feeder swings without spilling, and it's durable. It can take all the abuse that turkeys can hand out.

AUTHORIZED
Big Dutchman.
DISTRIBUTOR

HERSHEY EQUIPMENT CO., INC.
215 Diller Avenue
Phone (717) 354-5168 or (717) 872-5111
New Holland, Pa.