

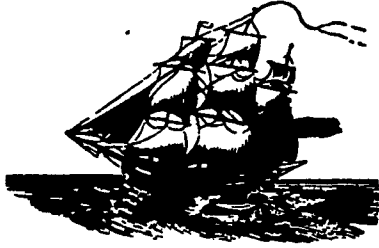


SEPT. 9-15, 1974

Clouds race apace, brisk and bright all right.

Trees are starting to turn now... Uncle Sam born Sept. 13, 1766... Third quarter of the moon Sept. 9, and a new moon Sept. 15... The autumnal migration of the birds is now at its height... Average length of days for the week, 12 hours, 42 minutes... C. Columbus finally back in Spain Sept. 12, 1504... Cranberries are harvested now... Two sparrows on the same ear of corn are not long friends.

**Old Farmer's Riddle:** What changes a pear into a pearl? (Answer below.)



**Home Hint:** If you want to keep suede shoes looking fresh, rub them with a piece of stale rye bread after each wearing... Riddle answer: The letter "L".

**OLD FARMER'S WEATHER FORECASTS**

**New England:** Clear and hot to start, then showers; light rain and cooler latter part.  
**Greater New York-New Jersey:** Shower at first then, mostly clear and cooling; end of week cloudy and rainy.  
**Middle Atlantic Coastal:** First part of week cloudy and warm; end of week rainy.  
**Southeast Coastal-Piedmont:** Week begins clear and hot, then moderately heavy rain; end of week clear and warm.  
**Florida:** Rain all week in central and intermittent rainfall throughout week elsewhere.  
**Upstate & Western N.Y.-Toronto & Montreal:** Early week rain in north; clear and hot most of week in south, then cloudier and cooler by weekend.  
**Greater Ohio Valley:** Rain to start, then partly cloudy; some showers and seasonable temperatures latter part.  
**Deep South:** Cloudy and warm at first, then rain in east; end of week clear and becoming hot.  
**Chicago and Southern Great Lakes:** Clear and hot to start, then showers in east; end of week generally sunny and warm.  
**Northern Great Plains-Great Lakes:** Week begins fair and warm with intermittent showers; end of week clearing and warm.  
**Central Great Plains:** Cloudy and warm at first, then some rain; partial clearing latter part.  
**Texas-Oklahoma:** Cooling rain to start, then mostly sunny and hot to end of week except for light rain by weekend in north.  
**Rocky Mountain Region:** Rain to start, then mostly sunny and becoming hot for remainder of week.  
**Southwest Desert:** Mostly clear all week with highs reaching mid 100s by weekend.  
**Pacific Northwest:** First part of week clear and very warm; end of week cloudy with light rain and cooler.  
**California:** Fair to start in north, then showery to end of week; showers at first in south but clearing latter part.

(All Rights Reserved Yankee, Inc., Dublin, N.H. 03444)

**Engineering Center To Be Dedicated at Sperry New Holland**

Sperry New Holland will dedicate its new worldwide Engineering Center and hold open house Saturday in New Holland.

The public is invited to an official flag raising ceremony in front of the Engineering Center at 11:45 a.m. Following the program, guided tours will be conducted of the center as well as the company's Operations Center and Manufacturing Center throughout the afternoon.

A new Visitors' Center and Museum will also be open for the first time Saturday. Shuttle buses will operate in the company area

throughout the afternoon for the convenience of visitors who want to see all the buildings and a product display.

The 140,000 square foot Engineering Center houses employees and equipment to design and test New Holland farm and industrial machines. It replaces a facility in use for more than 20 years.

Participating in the dedication ceremony will be President Kenneth F. Thompson; H. G. McCarty, vice president and general manager of the company's North American Division; Melvin J. Happe, vice president for engineering North America; Willis M. Houck, Mayor of New Holland Borough; and H. Nevin Lausch, project engineer, who will give the invocation.

Music will be supplied by the New Holland Band under the direction of S. O. Zimmerman. Boy Scouts from area troops will assist in a flag-raising ceremony.

The building is located on the company's 300-acre tract at the west end of New Holland Borough adjacent to the company's two-year-old Operations Center and the Sperry New Holland manufacturing plant.



**Blueberry Potato Pancakes**  
 Rinse 1 cup fresh blueberries and let dry thoroughly. Mix together 2 tablespoons flour, 1 teaspoon salt, and 1/4 teaspoon baking powder. Pare, wash and finely grate 6 raw potatoes (about 2 lbs or 3 cups grated). Set aside. Add 2 eggs, well beaten, to flour mixture. Drain off liquid that collected from grated potatoes and add potatoes to egg mixture. Beat thoroughly with a spoon. Carefully fold in fresh blueberries. Heat a greased skillet and drop potato batter by heaping tablespoons on the hot skillet. Fry over medium heat until golden brown and crisp on other side. Drain on absorbent paper. Serve plain or with warm blueberry sauce. Simmer 1 cup fresh blueberries with 1/2 cup water, 6 tablespoons corn syrup and 1 tablespoon lemon juice for 10-15 minutes. Remove from fire, add in another cup of fresh blueberries and serve warm over blueberry potato pancakes.

**HOW'S YOUR Agri-Culture?**

**CORN IS A NATIVE AMERICAN CROP**

**IT FIRST GREW IN SOUTH AMERICA'S ANDES MOUNTAINS & THEN MIGRATED TO NORTH AMERICA...**

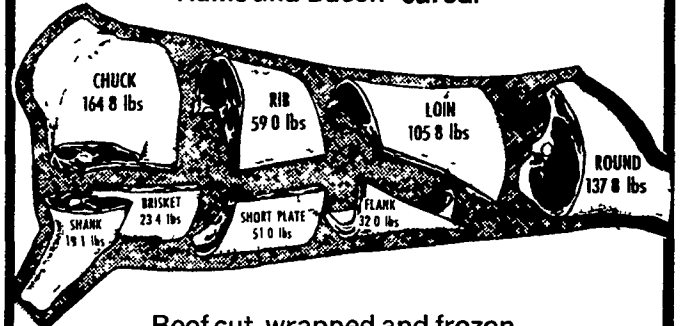


**COLONISTS FROM EUROPE FOUND INDIANS GROWING CORN FROM THE EASTERN SEABOARD TO THE FOOT OF THE ROCKIES... WITH SOME PLANTINGS COVERING HUNDREDS OF ACRES!**



**CUSTOM BUTCHERING**

Hogs Processed the old fashioned way.  
 Sausage, pudding, scrapple.  
 Hams and Bacon cured.



Beef cut, wrapped and frozen.  
 Dried beef and bologna.  
**WE ALSO SPECIALIZE IN U.S.D.A. GRADED SIDES AND QUARTERS. FOR HOME FREEZER**

**Call PAUL A. HESS**

464-3711 or 464-3127

**COMPLETE FARM PAINTING**

SPRAY-ON AND BRUSH-IN METHODS For FREE Estimates Write

**DANIEL S. ESH (C. RALPH MILLER)**

BOX 351, RD.1, RONKS, PA. 17572

**Most big dairies milk with a DLaval Soft-touch Combine**

because they get more milk with less work. Shouldn't you be getting the same benefits? Call us for a free estimate



**J. B. ZIMMERMAN & SONS**

West of Blue Ball, PA on RT. 23 PH [717]-354-4955

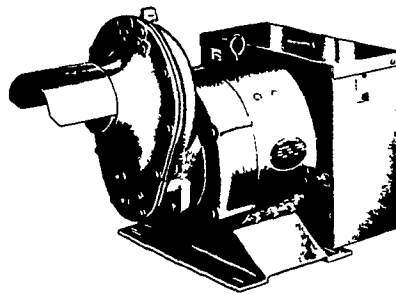
**LANDIS BROS., INC.**

1305 Manheim Pike Lanc., PA PH [717]-393-3906

**WINPOWER**

**TRACTOR DRIVEN ALTERNATORS**

**NO** COMMUTATOR or DC BRUSHES TO CREATE SERVICE PROBLEMS



- Superior Motor Starting Ability.
- Close Voltage Regulation.
- Instantaneous Recovery To Rated Voltage With Sudden Load Application.
- Electronic Rectification.

INSIST on a WINPOWER DEMONSTRATION at YOUR Farm Before You Buy ANY Tractor Driven Alternator

**WINPOWER**

1800 RPM LOW SPEED HEAVY DUTY

DEMONSTRATED, INSTALLED AND SERVICED BY

**MARVIN J. HORST**

R.D.1 (Iona

Phone 717-272-0871

Lebanon, Pa.

Located on Rt. 897 Between Schaefferstown & Lebanon Over 30 years in business at same place.