

Harvey S. Sauder, right, of RD1, New Holland, winner of the State Plowing Contest's contour plow division, receives plaque from Mr. Buell Ferguson, deputy state conservationist with the U.S. Soil Con-

servation Service, Harrisburg. The contest was held in conjunction with the 1974 Agricultural Progress Days at Bloomsburg, sponsored by The Pennsylvania State University's Cooperative Extension Service.



Frank R. Burkhardt, right, of 1030 Silver Spring Road, Lancaster, winner of the small plow division of the State Plowing Contest, receives plaque from Dr. James M. Beattie, dean of

The Pennsylvania State University's College of Agriculture. The plowing matches were held in conjunction with the 1974 Agricultural Progress Days at Bloomsburg.

## PSU To Study Single-Residence Sewerage Plans

Plans for a study of single residence sewage treatment in rural Pennsylvania were described recently in Wellsboro by Dr. Peter W. Fletcher and William E. Sharpe of The Pennsylvania State University.

The Penn State faculty members indicated \$9,000 have been made available for a 3-year cooperative project to investigate alternatives to conventional on-site sewage disposal methods for rural areas. Funding came from the Office of Water Resources Research of the U. S. Department of the Interior.

Cooperating on the study will be personnel of the Pennsylvania Department of Environmental Resources and the several private industrial, research and developmental groups and associations Dr. Fletcher is professor of forestry in the College of Agriculture at Penn State and Mrs. Sharpe is water resources specialist with the Institute of Research or Land and Water Resources.

The report was made during a meeting of the Joint Local-State Task Force on the Pine Creek Watershed

Dr. Fletcher is chairman of a statewide steering committee to meet August 9 in Harrisburg to determine the ultimate direction and scope of the study of rural sewage disposal in the Commonwealth.

Main purpose of the project is to define the magnitude of the on-lot sewage disposal problem in Pennsylvania, Dr. Fletcher pointed out. The study will determine the feasibility of starting a comprehensive long-range research program to identify, develop, and evaluate solutions to single residence sewage disposal in rural areas.

Following a review of previous work with sewage disposal in rural areas, a conference will be called to

determine the direction and scope of research efforts.

Products available from your local FEED and FARM SUPPLY DEALER serviced by New Holland Supply Company

## Sheep Handbook Available Soon

A completely revised second edition of the Sheep Housing and Equipment Handbook has been prepared and published by the Midwest Plan Service according to Dr. John Pedersen, manager. Sheepmen can secure copies by contacting the Extension Agricultural Engineer of their land grant university or their county extension office.

The handbook was prepared under the direction of midwest agricultural engineers and animal scientists. Housing and equipment plans include the most recent research and technology. Proven pieces of equipment have also been included. There are ideas and plans presented for the small flockowner as well as the large 3000-6000 head operator.

The handbook includes a number of completely new sections. There are sections on planning, barn and lot layout (including slotted floor confinement units), waste management, feed handling, and an extensive section on pieces of handling equipment designed to help sheepmen do a better job more easily.

Tom Wickersham, extension sheep specialist at

Iowa State University, stated the handbook would be worth several times its cost to any sheep producer seriously considering a change in his sheep program, management system or the housing and equipment he uses.

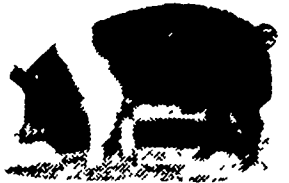
The handbook contains 84 pages attractively printed in two colors. The many drawings give enough detail that contractors or sheep-

men can work directly from them.

The publication is designated MWPS-3, Sheep Housing and Equipment Handbook and can be purchased for \$2.00 per copy. Anyone interested in securing the handbook outside the midwest should contact the Midwest Plan Service, Iowa State University, Ames, Iowa, 50010, directly.

## HOG PRODUCERS!

Get Top Price for Your Hogs at New Holland



Sold in sorted lots the auction way See them weighed and sold and pick up your check

**SALE EVERY MONDAY 9:00 A.M.**

**NEW HOLLAND SALES STABLES, INC.**

Phone 717-354-4341  
Daily Market Report Phone 717-354-7288  
Abe Diffenbach, Manager

### PUNCH LINE OF THE WEEK



### New Idea's Superpickers



## 1-row Superpicker... low cost way to harvest your corn

Hour after hour, acre after acre, you'll get non-stop plug-free picking in all kinds of corn with a 1-row Superpicker.

The big, hungry gathering unit picks clean, even in down and tangled corn. Flexi-Finger presser wheels on the long, 6-roll husking bed deliver clean, whole ears to your wagon even in the heaviest yields.

Before you buy, take a good look at this Superpicker... it combines the capacity you want with the non-stop performance you need for fast, clean, profitable corn harvesting.



We make your job a little easier

UMBERGERS MILL  
RD4 Lebanon (Fontana)  
717-867 8221

LANC EQUIP CENTER, INC.  
Kinzer Pa  
717-442-4186 or  
717-768 8916

A L HERR & BRO  
Quarryville  
717-786 3521

ROY H BUCH, INC  
Ephrata R D 2  
717-859 2441

CHAS J McCOMSEY & SONS  
Hickory Hill Pa  
215-932 2615

N G. HERSHEY & SON  
Manheim  
717-665 2271

STOLTZFUS FARM SERVICE  
Cochranville Pa  
215-593 5280

LONGENECKER FARM SUPPLY  
Rheems  
717-367-3590

A B C GROFF, INC  
New Holland  
717-354-4191

LANDIS BROS, INC  
Lancaster  
717-393-3906

THIS PRODUCT AND OTHER Products of Progress DISTRIBUTED IN THE NORTHEAST BY



Write or call for a list of Local Dealers

**NEW**



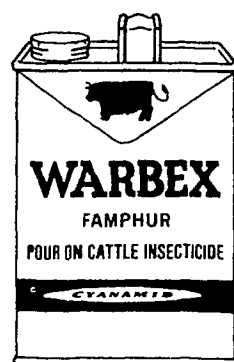
the most effective cattle wormer you can feed

CONTROLS MORE WORMS More than any other product NEW TRAMISOL® levamisole HCl controls all 9 major worms (nematodes) of the lungs, stomach, and intestines, that steal profitable weight gains

NO GUESSWORK Dosage is based on body weight alone You don't guess which worms are present or how many

All the wormer you'll ever need

AVAILABLE FROM YOUR FAVORITE ANIMAL HEALTH SUPPLIER



IT REALLY WORKS

Just use as directed

WARBEX® famphur kills cattle grubs before they mature, before they damage meat and hides

WARBEX doesn't set cattle back

WARBEX is easy to use.

Just Pour It On

