

LOCAL CORN CROP LOOKS GOOD!

KEEP IT GOOD!

Use



Silage Pre-Serv

DOES NOT CONTAIN UREA OR AMMONIA

Preserve all of the field-fresh nutritional value and feed appeal of corn silage. Use the storage you now have.



**ONLY 1/2 LB. OF SILAGE PRE-SERV IS
NEEDED FOR 1 TON OF CORN SILAGE**

So little is needed, so much is accomplished.

H. JACOB HOOBER
INTERCOURSE, PA.

RHOADS MILL, INC.
Selinsgrove & Milton, Pa.

EARL SAUDER, INC.
NEW HOLLAND, PA.

H. M. STAUFFER & SONS, INC.
LEOLA, PA.

THARPE & GREEN MILL
Churchville, Md.

VAN-MAR FEEDS
LEESPORT, PA

O. KENNETH McCracken & SON MANHEIM, PA.

Beacon Reps.

Ted Belefski
Ph. 523-9173

Chester Weist
Ph. 741-2600

R. E. Rudisill
Ph. 854-2281

Richard B. Kendig
302-478-3058

Beacon Feeds, York, Pa. Phone 717-843-9033

Lebanon Co. Agent Honored

Newton J. Bair, associate Lebanon County agricultural agent on The Pennsylvania State University's Cooperative Extension Service staff, has been named a state winner in the 1974 Environmental Quality Recognition Program.

The program, sponsored by the National Association of County Agricultural Agents and the Celanese Chemical Company, is designed to recognize outstanding Extension education programs conducted at county and state levels.

The winner was announced recently by John E. Creighton, Wayne County agent and chairman of the Pennsylvania County Agents Association's professional improvement committee.

The county agent's award was based on his work in developing and presenting programs on the "methane gas generator" which uses animal wastes to provide a source of power.

Bair received a \$25 cash award for winning the state contest and his entry will be judged in regional and national competition with winners announced at the national county agents convention at Tuscon, Ariz. in October.

Consumers' Corner

New "Spun-lace" Fabric

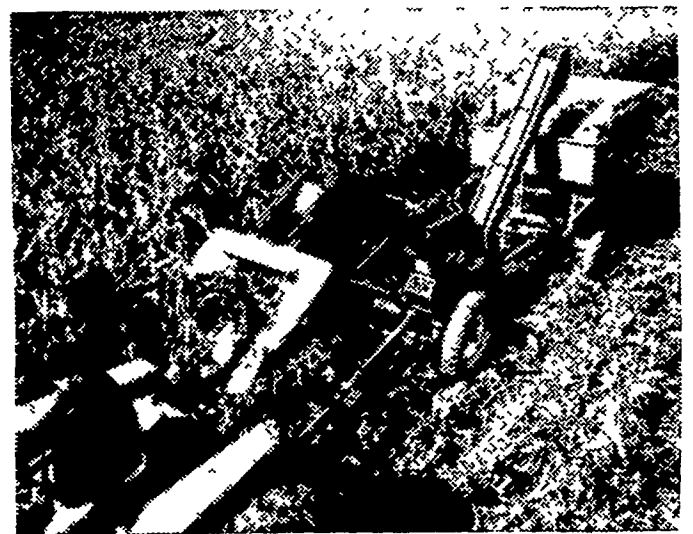
A new, nonwoven, warm weather fabric has been created through a "spun-lace" process. Individual fibers are entangled into the fabric without the use of looms, knitting machinery or adhesives. It's the friction between the fibers that holds a fabric together.

This "spun-lace" creation combines features of both woven and knit materials. It does not curl and cut edges do not fray.

The fabric can be drycleaned or washed. It dries quickly and has a high degree of softness and drapability. It may be printed or dyed.

"Spun-lace" can be used to create beach coverups, tablecloths, curtains, jackets, blouses, skirts and dresses. But pattern styles that are loose or gathered are best—they won't strain the fabric.

New Idea's Superpickers



Want

- Ear corn?
- Shelled corn?

You can have your choice with a 2-row Superpicker. For ear corn, choose the 8- or 12-roll husking bed. You'll get cleanly husked ears. For shelled corn you can specify the popular cage-type sheller, or the huge capacity Supersheller. Both are gentle and easy to adjust.

Interchanging any of these four processing units is done on the farm, without special tools. So you can harvest part of your corn one way and part another. And, there are two gathering units; one for wide rows, one for narrow. Come in and let's talk Superpickers!



We make your job a little easier

UMBERGERS MILL
RD4, Lebanon
(Fontana)
717-867-8221

LANC. EQUIP. CENTER, INC.
Kinzer, Pa.
717-442-4186 or
717-768-8916

A. L. HERR & BRO.
Quarryville
717-786-3521

ROY H. BUCH, INC.
Ephrata, R D 2
717-859-2441

CHAS. J. McCOMSEY & SONS
Hickory Hill, Pa.
215-932-2615

N. G. HERSHEY & SON
Manheim
717-665-2271

STOLTZFUS FARM SERVICE
Cochranville Pa.
215-593-5280

LONGENECKER FARM SUPPLY
Rheems
717-367-3590

A. B. C. GROFF, INC.
New Holland
717-354-4191

LANDIS BROS., INC.
Lancaster
717-393-3906