

# Poultry Market Reports

## WEEKLY NEW YORK EGG MARKET

From Monday, August 26 to Friday, August 30

	Mon.	Tues.	Wed.	Thurs.	Fri.
<b>WHITE</b>					
Ex. Larg.	63	65	65	65	65
Large	61	62	62	62	62
Mediums	54	57	57	57	57
Pullets	44	45	45	45	45
Peewees	32	32	32	32	32
<b>BROWN</b>					
Large	62	63	64	64	64
Mediums	Unquoted				
Pullets	Unquoted				
Peewees	Unquoted				
<b>Off Grade</b>					
Large	52	54	54	54	54
Checks	39	39	39	39½	39½

Tone — Pullets Slow, Balance fully Steady.  
Copyright 1974 Urner Barry Publications

## NEST RUN EGGS

Prices are from Egg Clearinghouse, Inc., (ECI) Durham, N.H. and reflect trading prices for gradeable nest run eggs (GNR) on ECI, a nationwide trading center for producers, packers and marketers. GNR eggs are classified by weight in 30-dozen cases, and traded in lots of either 300 or 750 cases. Prices are FOB buyers dock, and are computed Tuesday and Thursday of each week. This week's prices for each classification were:

Classification	New Weight Per Case	Tuesday	Thursday
Extra Large	51 lbs.	0	0
Class 1 - Large	48 lbs.	54	54
Class 3 - Medium	42 lbs.	49	50
Class 4 - Small	39 lbs.	39	40
Breaking Stock	48 lbs.	47	47
Checks	48 lbs.	41	41

## Omaha Cattle

**Thursday, August 29**  
**CATTLE:** Compared with previous week's close: slaughter steers and heifers 1.00-2.00 lower, late trading mainly 1.50-2.00 lower, instances 2.50 off mainly on heifers. Cows 2.50-3.00 lower. Bulls steady.  
Four day receipts 19,900 as compared 13,700 previous week and 14,600 a year ago. Slaughter steers approximately 46 pct., heifers 35 percent, cows 9 percent and feeders 8 percent.  
**STEERS:** Load High-Choice and Prime 1239 pounds 3-4 47.75 Tuesday, modest supply same grade 1015-1235 3-4 47.40-47.65 forepart of week. At mid-week, five loads Choice and Prime 1030-1256 3-4 46.75, load 1150 47.00 late. Choice 975-1275 2-4 44.00-46.50, closing sales mainly 44.00-45.50. Mixed Good and Choice 950-1250 43.00-45.00. Good 39.00-43.00. Standard and low-Good 37.00-38.50.  
Average cost slaughter steers first three days 44.99 average weight 1103 as compared 45.15 and 1103

previous week and 50.85 and 1099 a year ago.  
**HEIFERS:** Early, High-Choice and Prime 945-1011 3-4 45.60-46.00. At midweek, Choice 850-1050 2-4 ranged 42.50-45.25, closing sales 42.50-44.00, some choice with end Prime 950-1000 3-4 43.50-43.75. Mixed Good and Choice 750-1000 41.50-43.00. Good 38.00-42.00. Small lots Standard and Good 36.00-37.50.  
**COWS:** Utility and Commercial 21.50-22.50, few Utility dairybreds 22.75-23.00. Canner and Cutter 18.00-21.50, mixed Cutter and low-Utility 21.75-22.00.  
**BULLS:** 1-2 1400-1800 pounds 27.00-31.00.

## Peoria Cattle

**Thursday, August 29**  
**CATTLE:** Receipts this week: 9000; last week: 5000; year ago: 5600. Compared with last weeks close, slaughter steers weak to 50 lower. Slaughter heifers 50-1.00 lower. Cows 1.50-2.00 lower. Bulls weak to 1.00 lower. Receipts about 75 percent slaughter steers, 20 percent slaughter heifers, balance mainly cows.  
**SLAUGHTER STEERS:** Couple Loads Choice and

## Eastern Pa. & N. J.

**Live Poultry Report**  
**Wednesday, August 28**  
Prices unchanged to ½ cent lower on light type hens. Demand fair for ample offerings as producers continue to liquidate flocks. Offerings of heavy type hens adequate to barely adequate for a fair interest.  
Prices paid at farm: Light type hens 4-6½, mostly 6½ in Pa.; mostly 6-6½ in N.J. Heavy type hens TFEWR.

## Oklahoma City

**Thursday, August 29**  
Estimated receipts 4,800. Trade moderately active. Feeder steers generally steady with Choice 300-600 lb. 50-1.00 higher, feeder heifers generally steady. Most weight groups well represented with bulk supply Choice, and mixed Good and Choice 400-600 pound feeder steers, mixed Good and Choice 400-600 pound feeder heifers. Good attendance buyers.

**FEEDER STEERS:** Lot thin Choice 391 pound 40.10, few Choice 300-400 pound 36.75-38.10; 400-500 pound 34.70-37.25; 500-600 pound 32.75-35.40; 600-700 pound 31.50-34.50; few 700-775 pound 30.60-34.60. Mixed Good and Choice 300-400 32.10-34.75; 400-500 31.00-34.10; few 500-600 29.00-30.00. Good 400-500 28.70-30.20; 500-600 26.00-29.10, lot 714 Holsteins at 24.80.

**FEEDER HEIFERS:** Few Choice 400-500 30.00-33.75; Mixed Good and Choice 400-575 27.00-29.50; Few 600-675 26.90-27.80. Good 450-600 23.25-27.50.

**FOR THE WEEK:** Compared to last week feeder steers weak to 1.00, instances 2.00 lower. Feeder heifers steady to strong, instances 1.00 higher. Slaughter cows 3.00-4.00 lower. Slaughter bulls steady to 50 cents lower.

Prime 1245-1300 pounds 3-4 early 48.50-48.75; 1375-1575 4-5 44.00-3 44.00-46.00; mostly 44.75-46.00; Choice 1050-1250 2-4, late 46.00-47.25; Choice 900-1050 43.00-46.00; Mixed Good and Choice 900-1300 42.00-44.50; couple loads 1050-1100 45.50; Good 39.50-42 MPP; Standard and Good Holsteins 37.00-39.50; few 40.00.

**SLAUGHTER HEIFERS:** Choice 850-1050 pounds 2-4 43.00-45.00; early three loads 45.25-45.50; Choice 700-850 40.00-43.00; Mixed Good and Choice 750-1150 40.50-43.00; Good 38.00-40.50.

**COWS:** Utility and Commercial 21.50-24.00; early high-dressing Utility 25.00-25.50; Cutter 21.00-22.50; Canner 18.50-21.00.

**BULLS:** 1-2 1100-1700 pounds 28.00-31.00, 1-34.00.

xxx

**The Civilizing Force**  
Nine-tenths of all seeds cultivated are cereal grains—the breadstuffs of the world. And historians say early civilizations developed in Egypt and Mesopotamia because their climates were favorable for growing cereal grains

## Fogelsville

**Sale of August 20**  
(Prices paid dock weights, cents per pound, except where noted.)  
Hens, heavy type 6½-20, mostly 8-16; Pullets 36-38; Roasters 16-41, mostly 35-41; Ducks 30-45; Rabbits 21-40, mostly 30-40; Guinea 1.65½, mostly 1.65½; Pigeons (per pair) 86-3.00 mostly 1.00-1.20; Total coops sold 425.  
Poultry received Monday 7 p.m. to 10:30 p.m. Tuesday 7 a.m. to 12 Noon. Sale at 11:30 a.m.  
Directions — Take Rt. 2 thruway. Exit at Fogelsville exit. North on stoplight in Fogelsville, turn left, proceed 1 mile.

## New Holland Dairy Auction

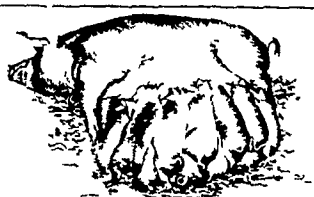
**Wednesday, August 28**  
Reported receipts of 104 cows and 15 heifers. Market steady for better cows.  
Load of Pennsylvania Cows fresh 545-900.  
Load of Canadian cows ready to calf in September and October 475-595.  
Herd dispersal of 31 head from Chester County, all stages of production 300-675.  
Locally consigned cows 400-960, springing heifers 470-610 and open heifers 125-180.

## Local Grain

**Thursday, August 29**  
These prices are made up of the average prices quoted by five participating local feed and grain concerns. It should be noted, however, that not every dealer handles each commodity. All prices are, per bushel except ear corn which is per ton.  
The average local grain prices quoted Thursday, August 29, 1974 are as follows:

	Bid+	Offered+
Ear Corn	98.00	108.00
Shelled	3.88	4.11
Oats, Local	1.78	2.05
Western	1.96	2.19
Barley	2.24	2.55
Wheat	3.70	4.10
Soybeans	7.25	7.55

+Bid is the price the dealer will buy from the farmer delivered to the mill. Offered is the price the dealer will sell for at his mill.



**At farrowing time, she'll need some extra help...**

AND SHE'LL GET IT WITH OUR WORM 'N GERM PROGRAM \* TRAMISOL in the feed just before farrowing knocks out the four major lung and intestinal worms

\* AUREO S•P 250 fights diseases rhinitis, scours and cervical abscesses right through the farrowing period

Call us today  
**STEVENS FEED MILL, INC.**

Stevens Pa  
Ph 215-267 2150 or 717 733 2153

## NEW ENGLAND WEEKLY SHELL EGG REPORT

Tuesday, August 27, 1974

Prices paid per dozen Grade "A" brown eggs in cartons delivered to retail stores:

	EX LARGE	LARGE	MEDIUM	SMALL
MASS+	69-73	67-71	58-66	41-46
Mostly	70-73	68-70	64-66	42-44
NEW HAMP	68-75	65-72	61-58	39-46
Mostly	70-71	67-68	63-64	41-46
R. I.	70-71	69-70	62-63	43-44
VERMONT	72-76	69-75	65-68	
Mostly	72-74	69-73	65-66	
MAINE	72-74	69-72	65-67	43-45

+ Includes Central and Western Sections Only.

## Baltimore Eggs

**Wednesday, August 28**  
Baltimore eggs: prices advanced on all sizes. Demand is fair to good with best interest for large eggs today.

Cartoned eggs: prices to retailers, state graded (min. one case sale) white. Grade A Large 69-74, mostly 69; Grade A Medium 64-67.

## Philadelphia Eggs

**Wednesday, August 28**  
Prices unchanged to higher on all sizes. Cartoning demand fair though often less aggressive than desired. Offerings of large fully adequate to ample, mediums and extra large in fairly good balance with needs. Undertone steady.

Prices to retailers: sales to volume buyers, consumer grades white eggs in cartons, delivered: store door A Extra Large 64½-68½; A Large 63½-67½; A Medium 54-60½.

## Delmarva

**Broiler-Fryer Market**  
**Wednesday, August 28**

Ready to cook movement continues good with offerings occasionally short of full call. Slaughter schedules continue to be hampered by labor absenteeism. Today's less than trucklot prices continue to advance on both Plant and US Grade A. Live supplies fully adequate with weights generally within desirable ranges. Undertone fully steady to firm.

Negotiated trucklot prices 2-3 pound ready to cook broiler-fryers for delivery next week: Plant Grade 40. Current Broiler-fryer negotiated prices for immediate delivery mostly multiple drop shipments to New York City from Delmarva:

Range: US Grade A 39½-41; Plant Grade 38½-40; Premium US Grade A 42-43; Premium Plant Grade 40-41. Weighted Average: US Grade A 40.09; Plant Grade 39.16; Premium US Grade A 42.60; Premium Plant Grade 40.90.

**HIGH PRESSURE WASHING**  
**OF POULTRY HOUSES AND VEAL PENS**  
**BARRY L. HERR**  
1744 Pioneer Road, Lancaster, Pa  
Phone 717-464-2044

**NOW! PREPARE FOR SEEDING**  
CALL US FOR PROMPT SERVICE ON:  
**LIMESTONE** — Truck Spread  
Fast Service  
**FERTILIZER** — Available in bags, bulk  
Trailer spreaders or custom truck spreading.  
CLOSED SATURDAY DURING JULY & AUGUST  
**ORGANIC PLANT FOOD CO.**  
2313 Norman Rd., Lancaster, Pa. Ph. 397-5152

## Lancaster Farming

P.O. Box 266 - Lititz, Pa. 17543  
Office: 22 E. Main St., Lititz, Pa. 17543  
Record-Express Office Bldg.  
Phone: Lancaster 717-394-3047  
or Lititz 717-626-2191

Richard E. Wanner, Editor  
Melissa Piper, Associate Editor

Subscription price \$2 per year  
Established November 4, 1955

Published every Saturday by Lancaster Farming Lititz, Pa

Second Class Postage paid at Lititz, Pa 17543

Members of Newspaper Farm Editors Assn., Pa. Newspaper Publishers Association, and National Newspaper Association.