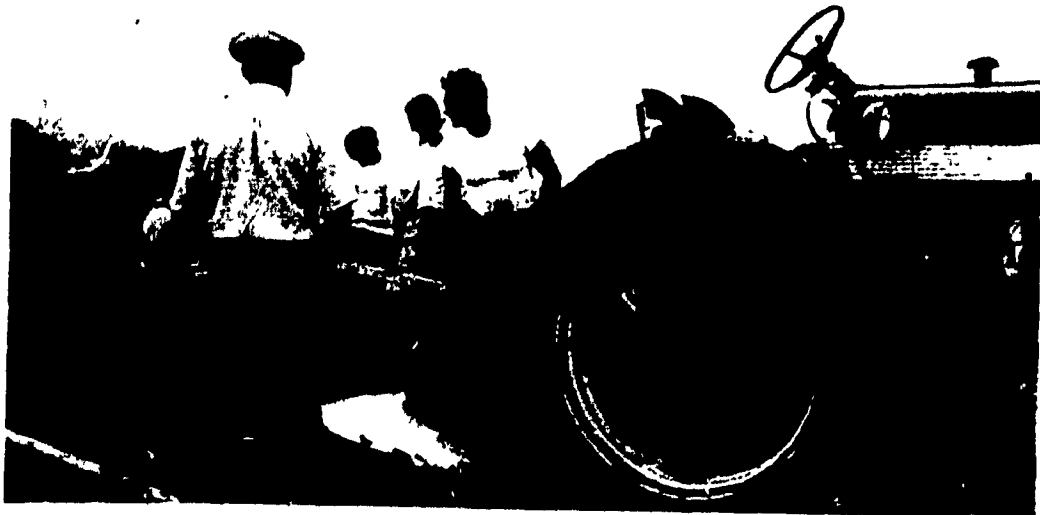


(Continued from Page 16)



Frank Burkhart, 1030 Silver Springs Rd., Lancaster, checks his furrow after completing one round at the State Plowing Contest.

ner, Lebanon and James Mowry, Somerset.

The Awards program for the event was held at the Fairgrounds later in the afternoon with a number of State officials in attendance.

Congressman Daniel J. Flood addressed the crowd expressing the need for Pa. farmers to spread the message of agriculture.

"Many people even in our state do not know that agriculture is a major part of our economy," he explained.

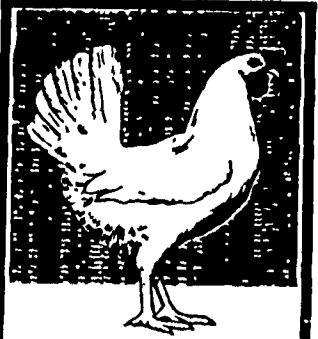
"We must let them know just how involved we are in agriculture."

Other guests included James Beattie, Dean of the College of Agriculture at the Pennsylvania State

University and James McHale, Pennsylvania Secretary of Agriculture. Master of Ceremonies for the program was Charles Slaton representing the State Soil Conservation Service.

In the Large Plow Contest, Harry Mosholder, Somerset County placed first with second place going to William Crain, Cumberland and Charles Bomgardner, Lebanon placing third.

Second place honors in the Contour Division went to James Mowry, Somerset County while Jay Mummert placed second in the Small Plow division. Third place honors in the same class went to Fran Houser, Mifflin County.



sustain top production with the **BABCOCK B-300**

Keeping production up ... costs down ... is the profit key in poultry operations. And more and more records on commercial flocks of Babcock B-300's ... "The Businessman's Bird" ... show sustained production of top quality eggs ... often with an additional 20 to 30 eggs per bird housed over other strains. Come in ... look at the records and the B-300 ... "The Businessman's Bird".



BABCOCK FARMS

Telephone [717] 626-8257
Telephone [717] 626-8561



Frank Burkhart, Lancaster County, took first place honors in the Small Plow Division of the State Plowing Contest with his Farmall 460 tractor.

WHITE WASHING with DAIRY WHITE

- Dries White
- Does Not Rub Off Easily
- No Wet Floors
- Is Compatible With Disinfectant

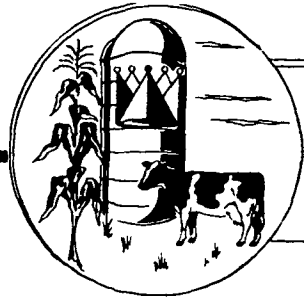
Also **BARN CLEANING SERVICE Available With Compressed Air**
MAYNARD L. BEITZEL

Spraying Since 1961

Witmer, Pa.

717-392-7227

HAVE YOUR BARN CLEANED AND SPRAYED NOW.



KEY TO PROFIT
AGRI KING, Inc.
PERSONALIZED FEEDING PROGRAMS

FULTON, ILL.

IT PAYS TO FEED THE AGRI-KING WAY!

Your Neighbor
EARL AND BETTY WEIR

RD2, Cochranville, Pa. Chester County

"We have a herd of 33 Registered Holsteins. We had been troubled with breeding problems, sore feet, and the month before we started with Agri-King we had 5 abortions. No one seemed to be able to find the cause of our problems.

In January 1973 Agri-King took samples, information on our herd, and balanced my feeding program. Things were better than before, but not quite like they should be. Agri-King checked the nitrate levels in our roughage and found we had a high level of nitrates. They included Micro XX in our ration. This is a product designed to counteract nitrates. Since using this we no longer have abortions, although we still have the nitrates in our hay.

In August of 1972 we had 40.9 lbs. milk per cow per day and 1.6 lbs. fat per cow per day. In August 1974 we had 57.4 lbs. milk per cow per day and 2.73 lbs. fat per cow per day. The cows herd health is much better, our production is higher than ever before, and there's more money in the bank account."

Eastern Lancaster Co.
Melvin Herr
RR2 New Holland, Pa 17557
Ph 717-354-5977

North Western Lancaster Co.
Earl B. Ginder
RD2 Manheim, Pa 17545
Phone 717-665-3126

Southwestern Lancaster Co.
Ben Greenawalt
RD2 Conestoga, Pa. 17516
Ph: 717-872-5686

Lehigh Co. Area
J. H. Moore
1213 Zorba Drive
Whitehall, Pa 18052
Ph 215 432-5987

Western Lancaster Co.
A. L. Wertman
413 Locust St
Columbia, Pa 17513
Ph 717-684-8768

Chester Co.
William Windle
RD1
Atglen Pa 19310
Ph 215-593-6143

Lebanon Co.
Marvin Meyer
RD2, Box 157
Annville, Pa 17003
Ph 717-867-1445

COUPON

Please Send Me More Information On More Milk and Less Problems "The Agri-King Way".

Mail to: **George F. DeLong**
REGIONAL MANAGER
P.O. Box 683 Lititz, Pa. 17543

Name _____

RD or St. _____

City _____ State _____

Zip _____ Phone _____