

## Crop Development Field Day Set

Latest crop developments of interest to farmers will be featured September 17 during a field day at the Rock Springs Agronomy Research Farm of Penn State, located 12 miles west of State College on Route 45 in Centre County. Key emphasis will be on corn production and management.

The day's events get underway at 9:30 a.m. with a tour lasting until 11:30. A second tour of additional plots gets underway at 1:30 p.m. To see all of the plots, interested persons should plan to arrive no later than

9:30 a.m. and spend the day at the farm, suggests Lynn D. Hoffman, field day chairman and superintendent of the Agronomy Research Farm.

Lunch may be purchased at the Agronomy Research Farm at noon. A brief noon program will feature welcoming remarks by Dr. James L. Starling, Head of the Department of Agronomy at Penn State. Comments on the role of research in the College of Agriculture will be made by Dr. Walter I. Thomas, Associate Director of the Agricultural Experiment

Station.

Corn production tours will show variety development and testing, silage production, weed control, and insecticide evaluation. The Stewart's disease situation (bacterial wilt) will be discussed. Corn tours will include no-till practices, continuous crownvetch cover crops in corn, organic acid preservation for storage, and anhydrous ammonia for preservation at storage.

Control of problem weeds such as nut grass, fall panicum, and quackgrass

will be discussed. Plots showing controls from such weeds will be available for inspection. Soybean production plots will show weed control, no-till production, experiments with various row widths, and double cropping of soybeans following barley. Tours of potato plots will stress weed control and blight forecasting.

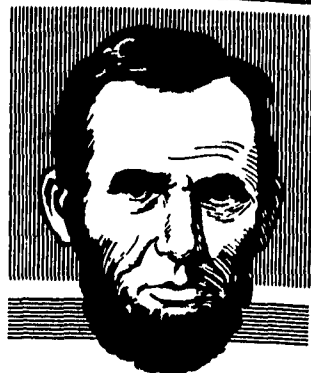
Perennial forage production plots will show plant breeding and crop improvement, legume management, sod seeding, hay preservation, and hay-

making with large round bales and stacks. Areas showing soil fertility and crop management will include sewage sludge fertilization, studies with the various soils of Central Pennsylvania, and drop rotations and fertility treatments.

XXX

At the close of fiscal 1973, more than 75,000 Pennsylvania employees were benefitting from the programs and services provided under the State's merit system of personnel management.

### American Viewpoints



*There is no grievance that is fit object of redress by mob law.*

— Abraham Lincoln

SEE and HEAR ABOUT  
**TODD**



**"GROW POWER HYBRIDS"**

*Yield Plus Greater Feeding Value.*

Visit with us and tour the plot while attending the Pennsylvania Ag Progress Days.

**TODD HYBRID SALES, INC.**

P. O. Box 66  
Abbottstown, Pa. 17301

# FMC FURADAN 10G FURADAN 4F

SEE US AT OUR BOOTH AT AG PROGRESS DAYS

## FMC Corporation

Agricultural Chemical Division

Middleport, N.Y. 14105

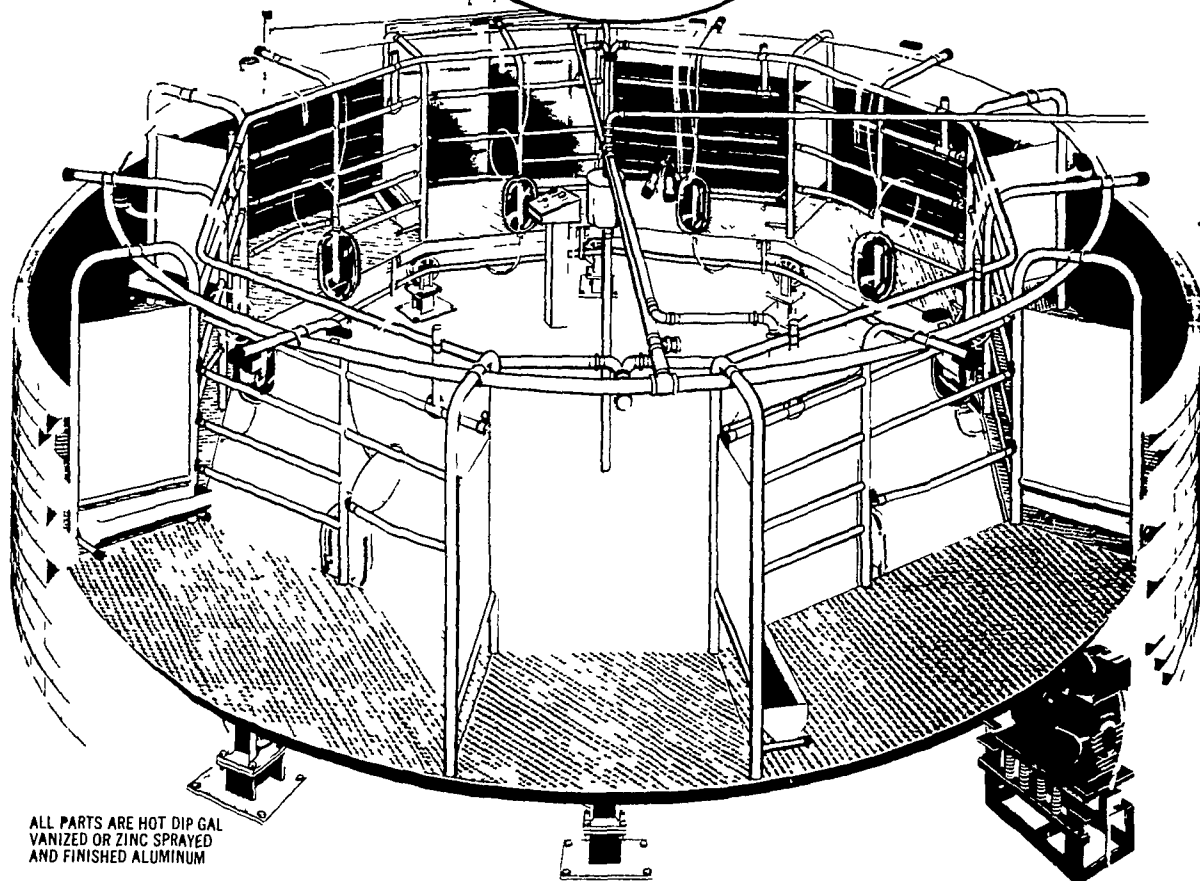
## YOU CAN MILK MORE COWS PER MAN HOUR WITH A CAROUSEL

WITH A



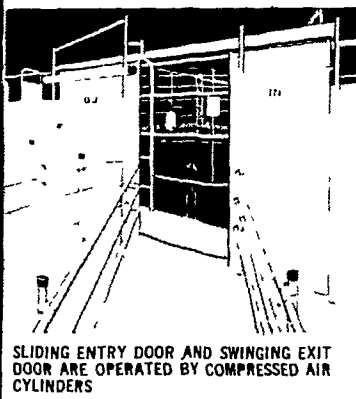
- ONE-MAN OPERATION CUTS LABOR COST 50%
- OPERATOR CAN MILK AT HIS OWN SPEED

THE COWS ARE MOVED TO THE OPERATOR  
WALKING IS REDUCED TO A MINIMUM

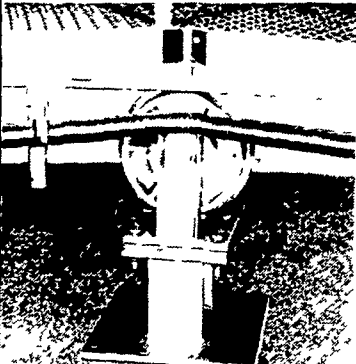


ALL PARTS ARE HOT DIP GALVANIZED OR ZINC SPRAYED AND FINISHED ALUMINUM

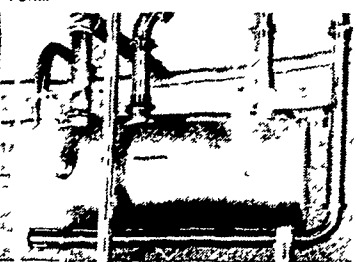
SEE IT IN ACTION AT AG PROGRESS DAYS  
BLOOMSBURG — AUGUST 28, 29



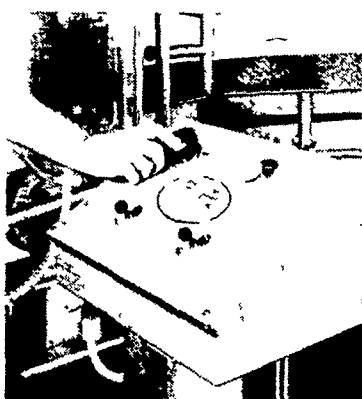
SLIDING ENTRY DOOR AND SWINGING EXIT DOOR ARE OPERATED BY COMPRESSED AIR CYLINDERS



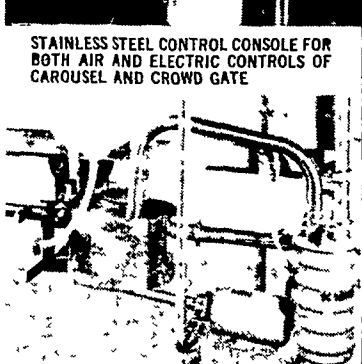
FLANGED STEEL WHEELS WITH TAPERED ROLLER BEARINGS ARE MOUNTED ON RUGGED FIXED PEDESTALS RAILROAD TYPE TRACK IS WELDED TO UNDERSIDE OF PLAT FORM



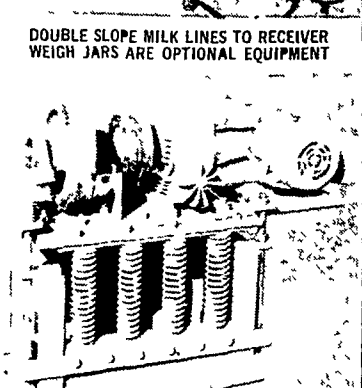
STAINLESS STEEL VACUUM BALANCE TANK WITH 2 VACUUM OUTLETS AND INLETS FOR 4 VACUUM REGULATORS



STAINLESS STEEL CONTROL CONSOLE FOR BOTH AIR AND ELECTRIC CONTROLS OF CAROUSEL AND CROWD GATE



DOUBLE SLOPE MILK LINES TO RECEIVER WEIGH JARS ARE OPTIONAL EQUIPMENT



SPRING CUSHIONED FRICTION DRIVE UNIT POWERED BY A 1 H P MOTOR



**CARL L. SHIRK**  
RD5, Lebanon, Pa. Colebrook Rd.  
Phone 274-1436

**SHENK'S FARM SERVICE**  
R.D.4, LITITZ, PA. PHONE 626-4355

