

Public Sales Register

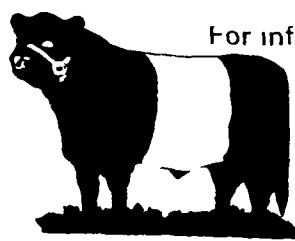
[Continued from Page 38] west of Middleburg just off
Holsteins to be held one mile Rt. 522 on road to Kissimmee

NORTHEAST BELTED GALLOWAYS

First Show and Production Sale
Registered Purebred Belted Galloways -
5 Bulls 25 Heifers
Top quality breeding stock
from six major herds

124th ANNUAL FRYEBURG FAIR
Fryeburg, Maine

October 4, 1974



For information and catalog write

Ernest C. Cutter, President,
Northeast Belted Galloways,
Beaver Dam Farm,

Durham, New Hampshire 03824 U.S.A.

at the Laudermitch farm, Snyder County. Sale by Roy I. and Elva I. Laudermitch, owners, Middleburg, Pa. RD1; E. Eash & K. Smith, Auctioneers.

MON. SEPT. 2- 11 A.M. Complete Holstein Dispersal Dairy Equipment and Hogs Located in York County 4 3-10 miles South of Hanover, Pa. on Route 94 Turn East on Fuhrman Mill Road adjacent to Amoco Gas pump 1 mile then turn north on Oak Wood Drive 2-10 mile to sale. Sale by Allen J. Myers, RD2, Hanover, Pa. Clair R. Slaybaugh, Auctioneer.

TUES. SEPT. 3- 1 P.M. Fourth Graded Feed Pig Sale at the Lancaster Stockyards, Inc.

WED. SEPT. 4 - 9:30 A.M. Consignment Sale located 1/2 mile north of Route 23 on North Maple Ave. in Leola, Lancaster Co. Pa. Sale by David H. Good; F Snyder, R. Martin and C. H. Wolgemuth, Auctioneer.

THURS. SEPT. 5 - 11 A.M. Public Sale of Farm Equipment located 2 miles Northwest of Springs Grove, Pa., take the Ross Church Road to Ridge Road or 8 miles West of York on Route 30, turn South on Labott

Road about 2 1/2 miles to Ridge Road, turn East, first Lane to left. Sale by Robert W. & Kathryn L. Hoover, RD1, Spring Grove, Pa.; Clair R. Slaybaugh, Auctioneer, Idaville, Pa.

FRI. SEPT. 6- 7 P.M. Public Sale of Holstein Dispersal and Dairy Equipment . 41 Head of Holsteins Registered and Grades located 9 miles Southeast of Quarryville on road leading from Kirkwood to Rt. 896, 2 1/2 mile East along Maple Shade Road in Colerain Twp. Sale by Frank S. Weidman; Lloyd H. Kreider and Paul Snyder, Auctioneers.

SAT. SEPT. 7- 10:30 Public Sale of Antiques and Household Goods located along Creek Hill Road, Leola. Sale by Gladys Johns; Hosler and Witman, Auctioneers.

SAT. SEPT. 7- 1 P.M. Public Sale of 60 Head of Charolais Cross Cattle located midway between East Berlin and Abbottstown on 194, turn at Jacobs Mill Road then turn right at St. Mayr's Road. Sale by Claude Grim Sons, Inc. Clair Slaybaugh, Auctioneer.

SAT. SEPT. 7- 2 P.M. Public Sale of 118 acre Dairy Farm located 5 miles East of Pine Grove, along Sweet Arrow Lake Road. Sale by Lester S. and Doris E. Martin, RD2, Pine Grove, Pa. John E. and Paul E. Martin, Auctioneers.

SAT. SEPT. 7 - 9:30 A.M. Sharp Public Sale of Real Estate, Farm Machinery, Growing Corn, Tools, Household Goods and Antiques of the late Thomas A. Miller of Rinely located approx. 1/4 miles off Rt. 24 along Westview P¹ near the Village of Rinely, York Co., Pa. Sale by Pauline V Miller, owner; Robert L. Sechrist, Auctioneer

SAT. SEPT. 7- 12 Noon Public Sale of Household Goods and Hay at the east end of New Holland off Route 23. Take North Kinzer Ave. to first land on right. Sale by Lydia K. Musser and John E. Campbell; Kreider and Diller, Auctioneers.

SAT. SEPT. 7 - 9:30 A.M. Public Auction of 104 acre Farm, Farm Equipment and Tools, Household Items, Antiques and Collectibles located 16 miles South of Sunbury; 45 miles Northeast of Harrisburg; 3 miles East of Pillow and Route 225; 3 miles West of Lingerstown,

including 10 acre tract woodland for Galen Frey; Hosler and Witman, Auctioneers.

SAT. SEPT. 14- 2 P.M. Public Sale of Real Estate

SAT. SEPT. 14- 11 A.M. Public Sale of 241 acre farm located at Dry Run, Pa., on the beautiful Tuscarora

[Continued on Page 40]

COWS EVERY WEDNESDAY IS COWS

DAIRY DAY

AT NEW HOLLAND SALES STABLES, INC.
New Holland, Pa.

If you need 1 cow or a truck load, we have from 100 to 200 cows to sell every week at your price. Mostly fresh and close springing Holsteins

Cows from local farmers and our regular shippers including Marvin Eshleman, Glenn Fite, Gordon Fritz, Blaine Hoffer, Dale Hostetter, Bill Lang, H D Matz, and Jerry Miller

SALE STARTS 12:30 SHARP

COWS

PUBLIC AUCTION
OF 118-ACRE DAIRY FARM
SATURDAY, SEPTEMBER 7, 1974
AT 2:00 P.M.

Location 5 miles East of Pine Grove along Sweet Arrow Lake Road Take Route 125 North from Pine Grove to Sweet Arrow Lake Road turn right 5 miles to Farm, in Village of Roedersville, Washington Township, Schuylkill County, Pennsylvania

118 ACRE DAIRY FARM
Approximately 78 Acres Tillable 10 Acres Pasture 30 Acres Woodland Thereon erected a

2 1/2-STORY FRAME HOME
Containing on First Floor Large Eat in Kitchen with lots of Cabinet Space and Built in Range Dining Room Living Room Second Floor contains 4 Bedrooms and Full Bath Third Floor Storage Basement contains Laundry Room 1/2 Bath Furnace Room Cold Cellar Coal Stoker Hot Water Heat with Summer Winter Hookup 2 STORY SUMMER HOUSE

LARGE FRAME BANK BARN with 34 Stanchions Tile Trough 2 Heifer Pens Patz Barn Cleaner

BLOCK MILKHOUSE with 500 Gallon Zero Milk Tank Sputnik Milk Transporter Automatic Washer and 52 Gallon Electric Water Heater Universal Vacuum Pump

16'x52' Star Silo with Badger Unloader
44'x60' Cement Block Implement Shed

2 Small Buildings for Heifers or Calves 4 x48 Corn Barn
1-CAR GARAGE

Lot of Old Shade Well with Myers Pressure System Stream 200 Amp Service to Farm All buildings are in excellent condition This is a very well kept Farm A level Farm with Soil in high state of cultivation
Sale time, 2:00 P M Sale by

LESTER S. and DORIS E. MARTIN
RD 2, Pine Grove, Pa - 717-345-3889

Richard A Adams, Attorney
John E and Paul E Martin, Auctioneers
717-733 3511 - 733-3305 - RD 1, Ephrata, Pa
NOTE Inspection of House by appointment or from 12:00 Noon to 4:00 P M Saturday August 31 1974 Inspection of balance of farm anytime For appointment call 717 345 3889

PUBLIC AUCTION

AT THE NEW

HAT & GAVEL AUCTION CO.

One mile North of Lititz along Rt. 501

THURSDAY, AUGUST 22 - 5 P.M.

SALE OF FINE CHINA & ANTIQUES

Items include: R.S. Prussia Hatpin holder; Fine Bristol "Remember Me" Mug; Lehn type turn pieces; 1863 green Gettysburg mug; Moose Rose Creamer; Mugs of all kinds; 1903 Christmas toothpick holder; Sandwich Glass; Moga milk pitcher; early colored Ironstone; Stoneware; butter molds; McKinley bread tray; Turkey and Duck on nest; Beam bottles; butter scales; Opalescent dishes; Roseville pottery; Mortar and Pestle; Brunnerville Trough; Wicker bottles; "Carrier and Ives" prints; Cherry seeder; viewers and cards; Reading RR water bucket; pewter creamer, sugar, salt & pepper tumblers; vases; coffee pot; bells; Agateware; 12-mold candle mold; brass tray and shuffer; coffee grinder; tin toys; flat irons; drugist scales; brass bucket; brass and iron frogs; iron kettles; kerosene light brackets; candy ribbon glass; Baltimore pear glass; celery stands; sponge cake mold; lion head compote; berry set, press etched in gold; feather plate; copper washboiler; milk white fish, 1892; tea leaf Ironstone; dove tailed ballot box; decorated crocks; wooden rake; 6 fiddle-back chairs; glass dome; horseshoe tumblers; tin spice set; sword & shields; pencil boxes; advertisement pieces; skater's light.

Ironstone creamers and sugar; Victor Phonograph; Atz; Broad axe; Shaping axe; walnut doll cradle; picture frames; brass scoop; kerosene lights; 1939 World's Fair Lamp; dated calendar plates; china eggs; 4 Magoelica leaf plates; Salts and Master Salts; Wines and Goblets; Staffordshire cat, Royal Copenhagen; China plates, small and large; 2 Gaudy Welsh square lustre plates; Carnival glass; Shirley Temple set; Heisey Glass Cruet, Bottles, fruit dish, candy dish; cut glass; pressed glass; pattern glass; Edison phonograph; mechanical banks, small brass kettle; dated bone-handled knives and forks; antique shoes; skillets; doll heads; milk white dresser perfume bottles; Walter Moyer Mug; creamer and sugar, pressed glass; 1907 Flight into Egypt Creamer; creamers and mugs of all sorts and kinds; cups and saucers; china cake stand; china celery dishes; cast iron dog & cat; Old skates; Ruby glass; photo albums; Jardnieres; large wooden bowls; shell and jewel picture; Bennington type spittoon; paper weights; invert thumb print; display cases; glass jewelry case; bottles; Bennington bank; potato mashers; baskets; Earthenware; wine set; glass star picture frame.

NOTE: THIS IS ONLY A PARTIAL LISTING!
PREVIEWING DAY OF SALE FROM 11 A.M.

WE ARE RECEIVING CONSIGNMENTS FOR OUR
SEPTEMBER 5 & 12 ANTIQUES SALES.

WE SPECIALIZE IN PUBLIC AUCTIONS,
ESTATES & ANTIQUES

WILBUR H. HOSLER

306 Owl Hill Rd., Lititz

JAY M. WITMAN

RD3, Manheim, Pa.

HAT & GAVEL AUCTION CO. SELLS ON COMMISSION -- Call 626-0254

Receiving Hours: Monday, Noon to 9 P M , Wednesday, 9 A.M. to 6 P M , Tuesday, Pickup Day.

CLIP & SAVE



JUNE—JULY—AUGUST

STOCKER and FEEDER AUCTION SALE

Next Sale August 23, 1974

SECOND AND FOURTH FRIDAY EACH MONTH

Starting Time 12:00 Noon

All Grades, Breeds, Weights

Load Lots — Small Lots

LANCASTER STOCKYARDS, INC.

LANCASTER, PA.

PHONE 717—394-2611

MEMBER FIRMS

WALTER M DUNLAP & SONS
J B HOOBER & SON
LOUIS LYONS & SON

JOHNSON CATTLE CO
MERTON W McCOY
WM W McCOY

T G KREIDER
EDW L BROWN
S L HEILBRON & SONS