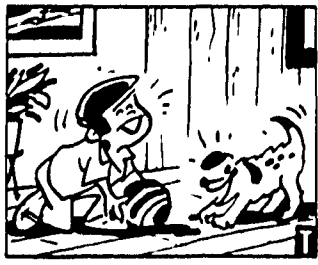


## Wood Enjoys New Popularity

Perhaps it reflects a new respect for natural resources, an outgrowth of the many shortages that have come to our attention recently. Maybe our eyes have tired of the brilliant colorings in paint, fabrics and furnishings and the starkness of plastic, glass and metal that have marked home fashions in the past decade.

Or, possibly, in taking a new look at our values and lifestyles, many of us are weary of devoting so much time to the care of possessions, some of which have not performed as promised.

Whatever the reasons, natural products and colorings are returning full force to interior design, and prime among them are woods in the warm brown tones—palest birch to deepest ma-



hogany, easy to live with and to combine with other subdued colors.

### Wood Paneling Requires Minimal Care

To the home- or apartment-dweller who dreads repainting or papering walls every few years, wood wall paneling offers a long-term decorating solution. Available in a vast choice of grains and colors, with finishes ranging from textured or matte to sleek and high-

gloss, wood paneling needs only occasional dusting with a long-handled lambswool applicator to keep dirt particles from scratching the finish, and once-in-a-while treatment with Scott's Liquid Gold, a wood food that keeps paneling both healthy and beautiful.

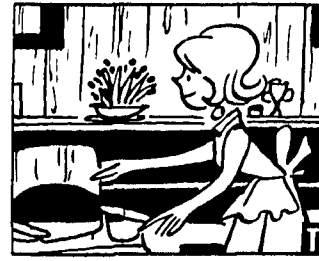
How frequently wood food should be used depends on the paneling's environment: high or low temperature, humidity and sunlight affect wood's moisture balance and call for frequent treatments, perhaps monthly. Ideal conditions—70°F and 50 percent relative humidity—necessitate only semi-annual care, during spring and fall house-cleaning. Easy to apply, Scott's Liquid Gold is simply wiped on and wiped off with the applicator.

An organic chemical combined with a penetrating agent and solvents, Scott's Liquid Gold also can be used as needed to wipe away dirt and grime, to darken and camouflage nicks and scratches, to inhibit the growth of mildew, and to resist dust. Leaving wood negatively-charged, Scott's Liquid Gold repels dust particles, which are also negatively charged. (Note: Always use a finely-woven hemmed cloth or chamois for dusting to avoid lint.)

Floors, Furniture Also Benefit

The same treatment—dust-

ing and feeding—will keep other wood in the home in tip-top condition. Floors and furniture, now waxed, should be treated to heavy repeated applications of wood food until all the old



wax and soil have been removed and the original moisture balance and natural beauty of the wood have been restored.

Furniture finished with lacquer, varnish or shellac will absorb Scott's Liquid Gold through microscopic pores in the finish. However, if the finish itself has been damaged, refinishing may be needed, after which dusting and occasional treatments with wood food will keep the furnishing at its best for many years.

### Editor's Quote Book

*Peace of mind: The contentment of the man who is too busy to worry by day, and too sleepy to worry at night.*

—Woodrow Wilson

## A Better Way

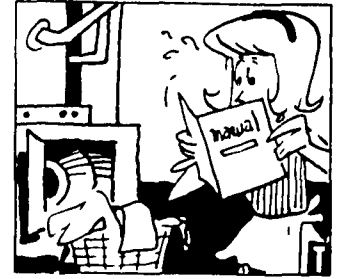
### SELECTING SERVICE

While most people are pretty practical when it comes to purchasing an appliance, they sometimes fall apart when it doesn't work properly.

Before you panic, it's a bright idea to check the appliance's electrical wall plug or the pilot light. Keep yourself under control and make sure the controls are set correctly. See if vents and grills are clogged, the faucets closed. Before you blow your fuse, find out if a circuit breaker has opened or a house fuse has blown.

Next, re-read your owners' manual to make sure you've handled everything correctly.

If you have, and you need professional help, see what the warranty requires. Some manufacturers specify that only certain servicemen repair their machines. Others ask that you return the defective part to the store or the manufacturer, and you'll be in a fix if someone else fixes it. If the warranty no longer warrants reading, ask the place of purchase to repair your ailing appliance, or to recommend someone who will. If they can't, write or call the manufacturer. With a Whirlpool appliance, you can dial the



also answer any question you may have about the appliance.

Make sure you call the proper repairman for your particular brand of appliance, and that he's the best for the job. The Better Business Bureau can also advise you.

Should you still need help, or if you aren't satisfied with the service, write to:

Major Appliance Consumer Action Panel (MACAP)  
Association of Home Appliance Manufacturers  
20 North Wacker Drive  
Chicago, Illinois 60606

To insure prompt handling, give MACAP specific information on the appliance, place and date of purchase and the service company.

## ROOF PROBLEMS?

Do Not Replace - Rejuvenate.

It's Your Money - Investigate.

CALL OR WRITE:

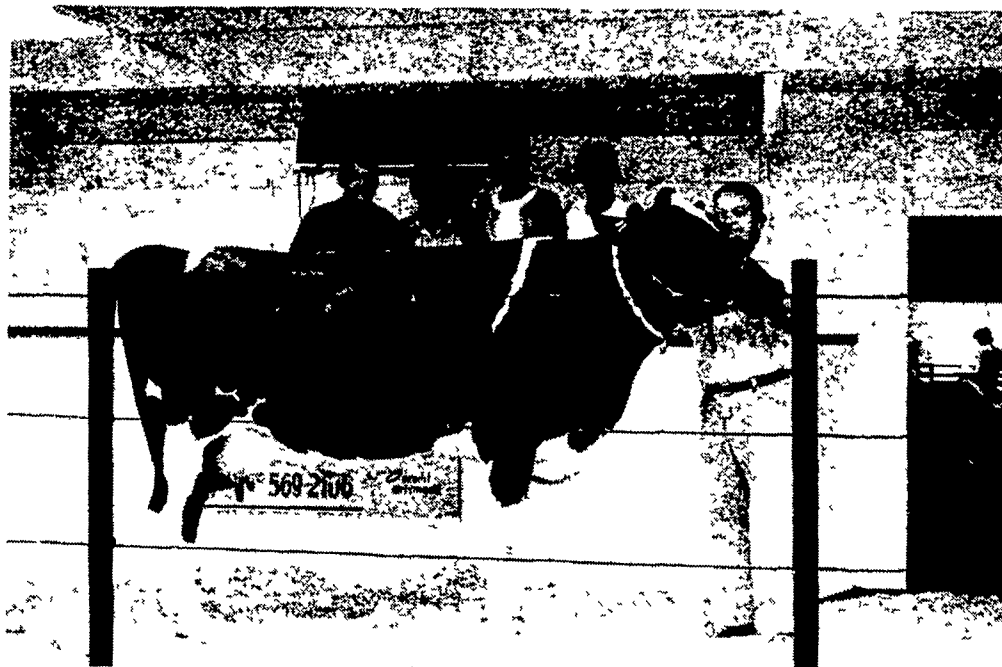
**COLONIAL REFINING & CHEMICAL CO.**  
14 Susquaw Place Lancaster, Pa. 17601  
569-6644

**Congratulations**

## SAM & MARIAN LONG,

Christiana, Pa.

### FOR AN OUTSTANDING ACHIEVEMENT



### DOREIGH FARMS MAGIC ROSIE

### DAUGHTER OF WINFARM RAG-APPLE MAGIC

Production 18,328 lbs. milk, 583 lbs. fat in 320 days

This 2 year old Heifer was classified on June 3, 1974 while standing dry. Classified very good, score 88.

This Heifer was consigned, National Convention sale on June 13th.

Selling price \$20,500.

It is one of many high producing heifers in the Sam & Marian Long Herd.

The Rolling herd average as of July, was 16,358 lbs. of

milk, 3.9 butterfat test, 637 lbs. butterfat. Included in the herd are 12 first calf heifers, and 7 second calf heifers.

This is proof positive of the TOP dairy management breeding and feeding program on this farm.

Feeding program on this herd has been Purina, calf heifer, dry cow and milking ration.

The forage and feeding program are 50 to 60 lbs. corn silage per day, 5 lbs. hay and 18% dairy ration.

Serviced by

## JOHN HESS II,

Paradise, Pa.