

Ida Risser

Life gets so hectic—especially in the summer. If we didn't have automobiles and then had to stay at home, I believe everything would be simpler. But no one would want to do that as they afford us an opportunity to see many new sights.

The other week Allen and I

took a two day trip to the Grand Canyon of Pa., and spent hours driving slowly through heavily forested areas in Cameron and Clinton Counties. This is the largest State Park and is known as the Bucktail Canyon. In fact we saw several orange colored doe

and their spotted fawns. How they could leap when they spied us.

We stopped at two isolated cemeteries and noticed most stones were placed there from 1860-1880 with a few only a year old. There were the ordinary names like Miller and Jones plus others like McGonigal, Witchey, Chatham, Shade, Rohn, Narehood, Shoden, Wooster, Hidge, Handley and many others.

There were quite a few hunting cabins in this area and among the interesting names were the following: Stumble Inn, Smokey City, Sawdust Camp, Confusion, Devil's Elbow, White Rabbit, Hungry Hound, and Castaways.

Now that we are back, we can rush some more to catch-up on undone work.

XXX

I'm sure there are many "new" gardeners around this year. If they didn't start with too big a plot and if they conscientiously weeded week after week they probably are reaping a harvest by now.

There is one more "if" and that is if the wild animals didn't eat the vegetables before the gardener got to them. We've been troubled with raccoons for several years and feel we've finally found the answer—an electric fence about 3-4 inches above the ground. However it took two nights for them to learn.

TRY A CLASSIFIED AD

Printed Pattern



9247
SIZES 10½-18½

Printed Pattern 9247: Half Sizes 10½, 12½, 14½, 16½, 18½. Size 14½ (bust 37) blouse 1¼ yards 45-inch, jacket 1½, pants 2¼ yards

ONE DOLLAR for each pattern — add 25 cents each for first-class mail and special handling. Send to 170 Newspaper Pattern Dept., 232 West 18th St., New York, N. Y. 10011.

- Instant Sewing Book \$1 00
 - Instant Fashion Book..... \$1 00
 - Fashions to Sew (F/W)..... .75
 - 1975 Needlecraft Catalog ... 75
 - Designer Catalog #3050
 - Book of 16 Quilts #150
 - Museum Quilt Book #2..... .50
 - 15 Quilts for Today #3..... .50
 - Book of 16 Jiffy Rugs..... .50
 - 12 Prize Afghans #1250
 - Complete Afghans #14.....\$1.00
 - Complete Gift Book.....\$1.00
 - Instant Crochet Book.....\$1.00
 - Instant Macramé Book\$1.00
 - Instant Money Book..... \$1.00
- Please add 25 cents for each Book for postage and handling.

SEW WHAT?
THIS WEEK'S PATTERNS BY AUDREY LANE

All Gentle Curves



3257
12-20
42-44-46

A square necked beauty where the princess lines below the yoke are very gently fitted. No 3257 comes in sizes 12, 14, 16, 18, 20, 42, 44, 46. Size 14, sleeveless, takes 2½ yards of 44-inch fabric; with short sleeve, 2¾ yards of 44-inch.



196
SAILOR SWEATER

A hand knitted sailor blouse for the 4-year-old miss is one which meets with approval. Ask for No 196.

Send 50¢ for each dress pattern, 30¢ for each needlework pattern (add 15¢ for each dress pattern, 10¢ for each needlework pattern for mailing and handling) to AUDREY LANE BU REAU, Morris Plains, New Jersey 07950

Bank Announced Personnel Changes

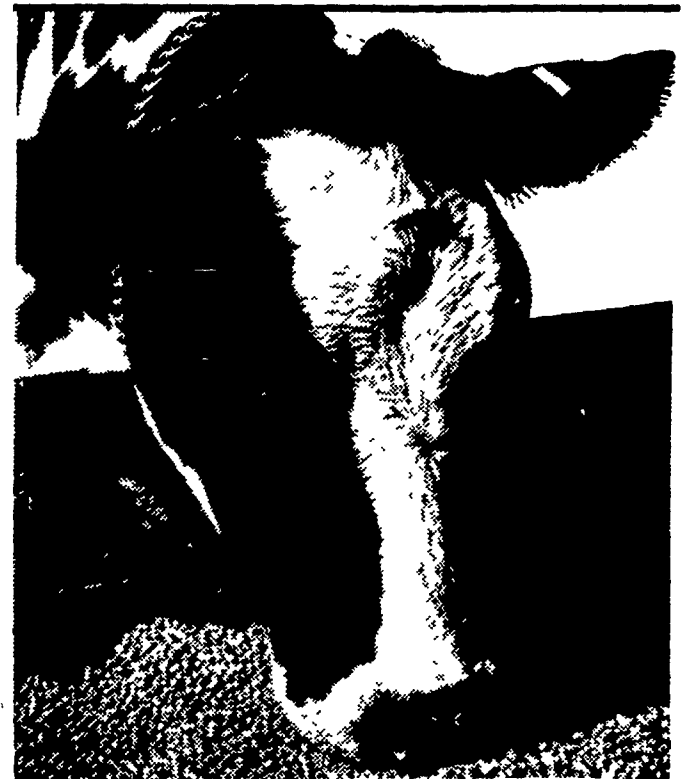
Three Lancaster people have received new job assignments in a re-organization of the Personnel Department at National Central Bank, according to an announcement today by Gregory J. Celia, bank vice president and director of personnel.

Ronald S. Hesser, 216 Valleybrook Drive, Lancaster, has been named assistant vice president and director of management development.

Brenda L. Lutz, 837 W. Main St., Ephrata, has been named personnel officer, and Donald L. Jones, 1251

High St., Lancaster, has been named wage and salary administrator for the bank.

COMPLETE FARM PAINTING
SPRAY-ON AND BRUSH-IN METHODS
For FREE Estimates Write
DANIEL S. ESH
(C. RALPH MILLER)
BOX 351, RD1, RONKS, PA. 17572



For high efficiency at low cost feed your cows Checkerboard Dairy

You can take advantage of present high milk prices by getting your cows to produce at their bred-in ability — at a low cost. Checkerboard Dairy is the milking ration for the dairyman who wants a highly efficient, yet a low-cost ration for his herd. Checkerboard Dairy has a balance of vitamins, minerals and protein cows need for top performance. And it's a complete milking ration, high in molasses for added palatability and pelleted for easy handling and feeding.

Put your herd on Checkerboard Dairy. See us today — and let Checkerboard Dairy help your cows produce all the milk that's bred into them — and let you take advantage of today's good milk prices.

Wenger's Feed Mill Inc.
Ph: 367-1195
Rheems

John B. Kurtz
Ph: 354-9251
R.D.3, Ephrata

O. Kenneth McCracken & Son
2 New Charlotte St., Manheim
Ph. 717-665-2186

Ira B. Landis
Ph: 665-3248
Box 276, Manheim RD3

John J. Hess, II, Inc.
Ph. 442-4632
Paradise

West Willow Farmers Assn., Inc.
Ph: 464-3431
West Willow



FARMERS
For Increased Yield and Protein in Your Alfalfa, Apply
SURE CROP
Plant Food 7-14-7
With Trace Elements with Your Weevil Spray Program.
FOR MORE INFORMATION
Call 717-469-2864 or write
P.O. Box 129, Hershey, Pa. 17033
Representatives Needed.

Would you believe it!!!

Ford Motor Comp. was so pleased with the grand opening at Lancaster Ford Tractor, Inc. They gave us permission to hold sale August 12 thru August 17 on the items listed as follows.

	LIST	SALE
19" push mower	149.00	99.95
21" push mower w-grass catcher	198.00	159.95
21" self propelled mower w-grass catcher	224.00	179.95
21" self propelled mower Elec. Start	254.00	229.95
Chain Saws		
Ford Hawk	135.00	79.95
Ford Eagle I	190.00	127.95
Model 60 7 H.P. Riding Mower	628.00	465.00
Model 65 7 H.P. Elect. Start Riding Mower	730.00	549.00
Model 100 10 H.P. w-42" Mower	1707.00	1210.00
Model 120-12 H.P. w-50" Mower	1959.00	1320.00
Model 145-14 H.P. Hydrostatic drive	2336.00	1585.00
Hydraulic lift, lights, adjustable seat, w-50" mower		

This is our way of saying we appreciate you as a customer & friend at the new home.

Ford Tractors Equipment

Lancaster Ford Tractor, Inc.
The Home of The Friendly People
1655 ROHRERSTOWN ROAD
LANCASTER, PA. PHONE (717) 569-7063
Please note quantities limited.