

Brenda Eshleman being presented with a gift after being selected Miss Congeniality at the Lancaster County Dairy Princess Pageant.



## Doctor in the Kitchen®

by Laurence M. Hursh, M.D.  
Consultant, National Dairy Council

### New Endorsement For Milk

The most scrutinized food in the world is milk. This probably is because it is the first food a baby has. And then through childhood and adulthood, milk has so much to offer.

Since we associate this food with health, with essential nourishment, it's no wonder milk's production, processing and distribution are more closely regulated than any other food. The public interest demands that it be carefully handled.

And so it is natural, too, that milk constantly is under inspection in nutrition laboratories. And it is easy to make headlines with an attack on milk, or some new hypothesis that suggests maybe it is not as good for us as we had supposed.

### Balance Needed

But in a free society, one hopes news balances itself—that is, if we are exposed to an attack we also hear a defense, if a defense is proper.

Well, the American Academy of Pediatrics decided recently to react to some "sensational and alarmist" articles that have suggested milk might be bad for older infants. The Academy's Committee on Nutrition published a statement in the medical journal Pediatrics endorsing milk as a wholesome and nutritious food.

With specific reference to some expressed concern about the fat and cholesterol content of milk, the Committee said: "There is no evidence as yet that the prevalence or severity of

atherosclerosis can be diminished by limiting the intake of cholesterol early in life." As for saturated fats, a constituent of milk, the Committee said dietary restriction should be imposed only on children with a genetic cholesterol. This happens about once in every 150 live births. The Committee also found no evidence that milk in itself contributes to child obesity.

Giving children skim milk as a general practice could deprive them of needed calories, the Committee said, and "In infants and young children, the use of skimmed milk may provide an excess of protein and minerals in relation to calories."

### Will Review Calcium

The Committee intends to review milk's role in meeting human calcium requirements to see if present recommendations are "above what is required for normal skeletal, dental and general growth and development."

The three health problems for which the Committee feels restrictions on milk intake are warranted are: 1) youngsters with nutritional iron deficiency (this could occur if a child drinks milk to the exclusion of other needed foods); 2) children who "won't eat" (this, too, could be too much milk instead of other foods); and 3) children who tend toward constipation.

### Conserve Water

The average shower consumes 20 to 30 gallons of water while a tub bath uses 30 to 40.

## TRY A CLASSIFIED AD

### PAINTING PROPERTY MAINTENANCE

- ALUMINUM FIBERATED ROOF COATING
- BLACK FIBERATED ROOF COATING
- GUARANTEED 10 YEARS — SURVEY SERVICE AVAILABLE.
- BLACK TOP SEALANT
- SPRAY EQUIPMENT AVAILABLE FREE WITH QUALIFYING ORDERS.
- WHITE CREOSOTE BARN & FENCE PRINT
- GRAIN ELEVATOR & SILO COATING.
- HEAVY DUTY DEGREASER.

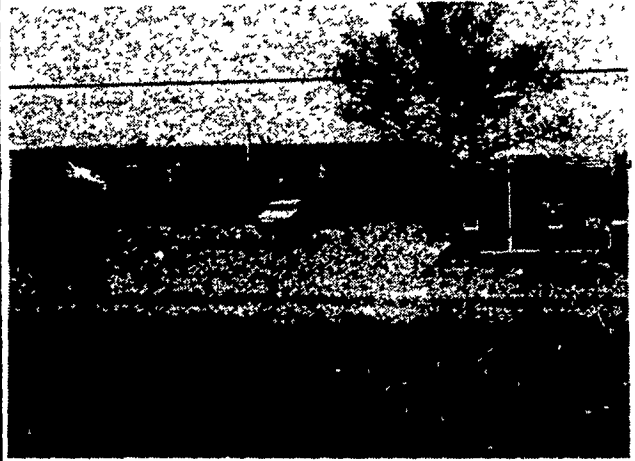
### FULL LINE OF PAINTS & ENAMELS.

For Complete Details, Please Contact:

## Colonial Refining & Chemical Co.

14 Susquaw Place, Lancaster, Pa. 17601  
717-569-6644 or 215-363-9065

## HURST'S TIRE SERVICE



**FOR ALL YOUR TIRE  
NEEDS SEE US NOW!**

**FARM-TRUCK-PASSENGER**

**WE GUARANTEE OUR WORK**

LOCATED 1 MILE WEST OF BLUE BALL  
ON RT. 322 PHONE 354-4931

**"ATTENTION"**  
**DAIRYMEN'S SUPER SPECIALS**  
**"MAES INFLATIONS" 95¢ EACH**  
FITS: SURGE, JET-FLO, BOUMATIC, DELAVAL.  
Fly Sprays, Foggers, Cattle Dust Bags, Silage Preservative, Mineral Feeders, Farm Gates, Hog Feeders, Heated Waterers.  
**ZIMMERMAN'S Animal Health Supply**  
3 Miles W. of Ephrata along WOODCONNER ROAD  
R.D.#4, Litz, Pa. 17543 Phone 717-733-4466

# FARM CREDIT SERVICE



## A SURE SIGN OF PROGRESS IN AGRICULTURE

Providing the financing necessary to increase farm efficiency and output is Farm Credit's job. And only job, as it has been for 50 years. Farm Credit loans are available today for any sound farm need from buying a ton of feed to acquiring additional acreage. Farm Credit interest charges are reasonable as they are calculated on the amount of money actually in use. That's why Farm Credit loans cost less.



411 W. ROSEVILLE RD.,  
LANCASTER  
PH. 393-3921

AGWAY BUILDING,  
LEBANON  
PH. 273-4506

