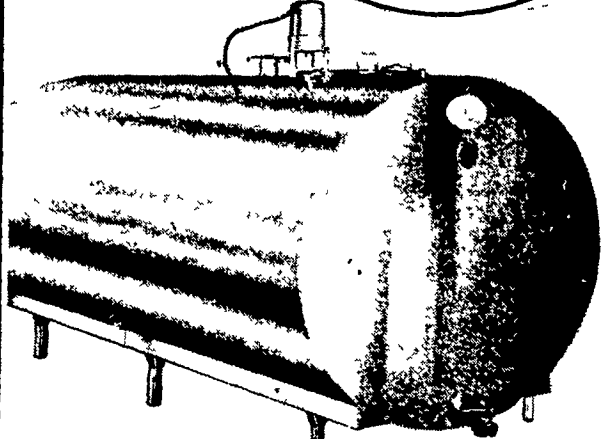


TRY A CLASSIFIED AD

JUNE FACTORY WAREHOUSE SPECIALS

DARI-KOOL
BULK MILK COOLERS



USED BULK MILK TANKS

300 gal Jamesway	800 gal Esco
500 gal Dari Kool (ice bank)	300 gal Zero (Sold)
Esco Dumping Station	500 gal Mojonnier (Sold)
Sputnik	600 gal Mojonnier
Surge Pipeline w/Dumping Station	

MR. DAIRYMAN:
We have the size of bulk milk tanks to fit your needs from 300 to 7,000 gal.
We have a good supply of milk tanks on stock, therefore, we can assure you of immediate delivery.
"Don't forget" you are dealing with a tank company that has more than 20 years experience in manufacturing of high quality bulk milk tanks.
Being a factory warehouse distributor we are able to give you a price that is suitable for you.
GIVE TITUS BURKHOLDER A CALL AT (717) 626-4355
OR AFTER 5 CALL (717) 859-1620
WE OFFER 24-HOUR PROMPT SERVICE

SHENK'S FARM SERVICE
R.D.4. LITITZ, PA. PHONE 626-4355
DARI-KOOL FASTEST GROWING MILK TANK IN THE WORLD

Sandwiches Are Good Standby Summer Fare

Sandwiches fit the summer style of eating: they're casual, carefree and easy to fix, carry or keep.

They also fit all kinds of occasions when food's in order: that quick snack or meal on porch or patio; that meal-in-hand on a boat; or, that brown bag bash you may carry in your knapsack or transport to the beach.

Sandwiches are only as good as their fillings. Those must be full rather than skimpy. Though the choice is as wide as the world, prepare only those which you and the family like. There's just no sense in spending time and money on smoked salmon or Bel Paese cheese for a piece de resistance unless the folks go for it. It's better to stick with American or Swiss cheese, ham, peanut butter or summer sausage if that's what turns them on.

So have fresh bread, rolls or buns. Stale bread adds nothing positive to a sandwich since it may have to wait before being eaten. Do butter that bread or roll, all the way to the edges, or the filling will soak through and make it soggy.

Some sandwiches are made to wait, like these Cheesy Franks in Foil. A lively mixture goes into buttered buns, then they're wrapped in foil. They're not really baked but they're heated in the oven or on the grill to make them really tempting.

CHEESY FRANKS IN FOIL

- 2 cups (8 oz.) shredded Cheddar cheese
 - 1/4 cup chili sauce
 - 1/4 cup sweet pickle relish
 - 1/8 teaspoon leaf oregano
 - 8 frankfurters
 - 8 frankfurter buns
- In a bowl combine cheese,

chili sauce, relish and oregano. Slit frankfurters lengthwise, but do not cut through. Place about 3 tablespoons cheese mixture in each. Place frankfurters in buns. Place each on double thick rectangle of aluminum foil. Fold foil down onto sandwich in tight double fold; twist ends. Place on grill folded side down for 10 minutes; turn and heat 10 additional minutes. Makes 8 sandwiches.

VARIATION: In a bowl blend together 2/3 cup dairy sour cream, 1/4 cup instant minced onion, 1/4 cup sweet pickle relish, 1/4 cup prepared mustard and 1/2 cup crumbled Blue cheese. Spread mixture on both sides of cut buns. Place frankfurters in buns. Wrap and heat as above.

ITALIAN CHEESEBURGERS

- 1 pound ground beef
- 1/4 cup chopped onion
- 1 teaspoon salt
- 1/2 teaspoon garlic salt
- 1/2 teaspoon basil leaves
- 1/4 teaspoon leaf oregano
- 1/8 teaspoon pepper
- 6 slices Mozzarella cheese
- 6 sandwich buns, buttered

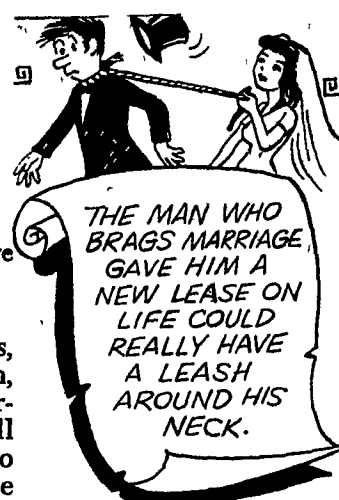
In a bowl lightly mix beef, onion, salt, garlic salt, basil, oregano and pepper just until blended. Shape into 6 patties. Place on broiler pan. Broil to desired degree of doneness. Top each patty with a slice of Mozzarella cheese and broil just until cheese begins to melt. Serve in buns. Makes 6 sandwiches.

EGG SALAD SPREAD

- 3 hard-cooked eggs, finely chopped

- 1/2 cup cottage cheese
- 1 tablespoon dairy sour cream
- 2 teaspoons prepared mustard
- 1 1/2 teaspoons chopped chives
- 1/4 teaspoon salt
- 1/8 teaspoon Worcestershire sauce
- 1/8 teaspoon dill weed

In small bowl combine eggs, cottage cheese, sour cream, mustard, chives, salt, Worcestershire sauce and dill weed. Cover and chill to blend flavors. Serve on rye bread or crisp crackers. Yield: 1 1/4 cups.



THE MAN WHO BRAGS MARRIAGE GAVE HIM A NEW LEASE ON LIFE COULD REALLY HAVE A LEASH AROUND HIS NECK.

DYNA Farmline Motors

SINGLE-PHASE — 1/2 to 10 H. P.; Capacitor Start; CONTINUOUS DUTY; BALL BEARING; TOTALLY ENCLOSED

Specially Designed to Produce Operating Characteristics to Fulfill Farm Requirements for Hard-Starting, Long-Life, Rugged Use Motors.

HIGH STARTING TORQUE FOR COMPRESSORS, BARN CLEANERS, GRINDERS, SILO UNLOADERS OR ANY OTHER OPERATION THAT STARTS UNDER LOAD.

Quantity Discounts

FARMERS and DEALERS:

We Can Serve Your Motor Needs For 1 or 500 Motors.

FACTORY WARRANTY SERVICE



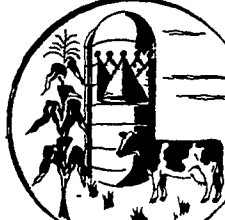
ELECTROMECH
ELECTROMECHANICAL SERVICE

ROUTE 222, EPHRATA, PA. 17522
PHONE (717) 733-7911

ELECTRIC MOTOR • GENERATOR • POWER-TOOL SPECIALISTS



KEY TO PROFIT
AGRI-KING, Inc.
PERSONALIZED FEEDING PROGRAMS
FULTON, ILL.



From Field . . .
To Storage . . .
To Livestock . . .

Preserve Maximum Nutrient Content and Palatability by using

"Silo-King" Silage Preservative:

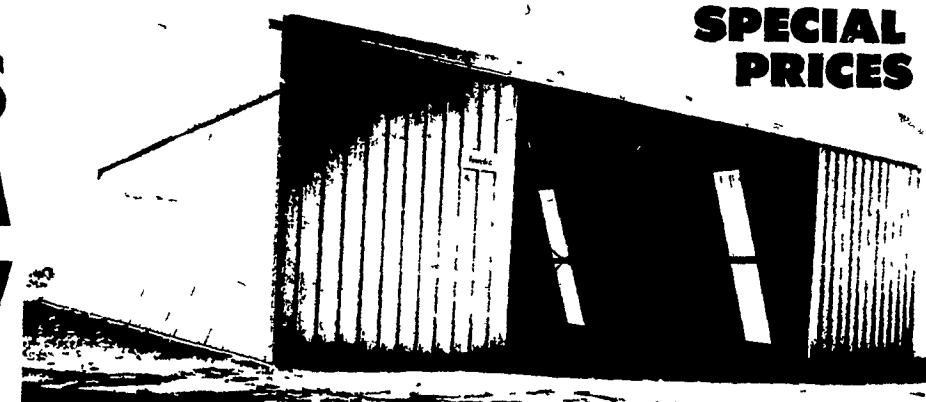
DON'T WASTE A THING, YOUR CROPS ARE TOO VALUABLE

- Hay or haylage value ranges from \$20.00 to \$80.00 per ton in feeding value: on a 10 percent dry matter basis.
- Due to the ever increasing cost of feeding and maintaining livestock, your future may depend on your handling of roughage in the most profitable manner.
- To prevent weather loss in making haylage, mow in the morning after the dew is off and chop that afternoon on a good drying day:
- And to help prevent heating, vitamin loss, energy loss, protein loss, and silo-stink, apply "SILO-KING" silage preservative.
- Another bonus from using "SILO-KING" is greater silo capacity. This is due to the higher moisture content that's possible to maintain by using "SILO-KING"

For outstanding results, proven again and again in 23 states and Canada.
For higher feeding value and greater silo capacity.

ASK YOUR LOCAL DEALER TO SEE YOU
Write or Phone
GEORGE F. DELONG
STATE MANAGER P.O. BOX 683, LITITZ, PA. 17543
Call Collect: 717-626-0115
"SILO-KING" - Manufactured by Agri-King, Inc.
Fulton, Ill.

SAVE



SPECIAL PRICES

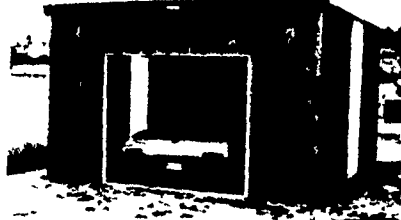
BUTLER
ALL STEEL BUILDINGS

All buildings with color sides, hi-ten aluminum roof

30' x 25' Garage
w/ 2 10' x 10' O.H. Door Openings

30' x 40' Bldg.
w/ 16' x 10' Double Slide Door

40' x 75' Bldg.
w/ 20' x 13' Double Slide Door



10' x 20' Bldg.

FARMILL
CONSTRUCTION & REPAIR
SOUDERSBURG, PA. Phone 687-7659