

# Farm Women Societies

## Society 4

Farm Women Society 4 entertained Farm Women Society 10. The women toured Royer's Flower Shop and then had a social hour at the home of Mrs. Clarence Miller, Myerstown. Games were in charge of Mrs. Frederick Bohr.

Mrs. George Moyer conducted the business session. Announcement was made of the county convention to be held September 28th.

The next meeting will be a family picnic to be held on July 14, at the Bethel Playground.

## Society 22

Farm Women Society No. 22 held a Cheese Safari at Hickory Farms in Park City. The meeting then moved to Long Park where Mrs. William Weller and Mrs. Harold Rudy were hostesses.

A new member, Mrs. Cora Frymyer, was installed. The members voted to contribute \$500.00 to Camp J.C. the Lancaster County Farm Women project for the year.

The next meeting will be held August 13 at 7 p.m. in the home of Mrs. Clarence Rohrer, Smoketown. The program will be a Chinese Auction.

in charge of the meeting assisted by Robbie Goldston as program chairman. Nora Garber, a member of Society 24 gave a short talk entitled "Talking and Loving Your Plants Into Growing" by giving a variety of helpful hints. Miss Linda Myer and Miss Shirley Garber, both daughters of members of Society 24 presented two duets in song; "What a Great Thing It Is" and "An American Is A Lucky Man" accompanied on the guitar and piano by Mrs. Irene Noffsinger.

Mrs. Gloria Uhler of Lancaster gave a humorous lecture on "The Training, Care, and Feeding of a Husband." Mrs. Uhler is a member of the Lancaster Toastmasters Club, formerly of Pittsburg, she graduated from Mercy Horst College, Erie with a Bachelor of Art Degree, and worked with the Radio Station UJAS.

Mrs. Sterling Elmer won the prize in the game contest. Each guest received a potted house plant. A lovely luncheon was served by the food committee. In closing the group sang the theme song of the Farm Women, "Brighten The Corner".

The next meeting of the group will be held at the home of Mrs. Wilma Wenger, Leola, when a

## Society 24

Farm Women Society 24 met recently at the Conestoga Brethren Church, Bareville, when members of Society 9 and county officers of Farm Women were entertained. 24 members answered roll call by introducing their guests. Mrs. Eunice Mehle conducted the devotional part of the program, with telling that we need our own spiritual food to help us grow along the way.

President Ruth Shultz was

speaker from Pennsylvania Power and Light Company will present the program.

## Society 29

Members of Society 29 were entertained on Saturday, afternoon June 15 by Mrs. Irene Eberly at the Middle Creek Wildlife Reserve. Mr. Struphard from the Pa. Game Commission explained the necessity of Wildlife Reserve and also showed a film on the management of balancing wildlife population.

Volunteers for the Ephrata Community Hospital snack-bar are: Mrs. Elizabeth Hess, Mrs. Pauline Martin, Mrs. Erla Gehman, and Mrs. Irene Eberly. Mrs. Mary Alice Gregory announced she will be attending a meeting concerning the pros and cons of a Lancaster County Fair. Women appointed to the program committee for next year are: Mrs. Alice Trumbauer, and Mrs. Mary Alice Gregory. These will be co-chairman - Mrs. Doris Miller, Mrs. Kathy Eberly and Mrs. Ruth Shaub.

Mrs. Kathy Eberly reported about an exchange trip to Michigan she and Irene Eberly took with State Farm Women. Saturday, June 29 at 8:00 p.m. The Society plans to entertain husbands at the 24th Annual Senior Drum & Bugle Corps competition at the Hershey Stadium, Hershey, Pa. Members and their guests were invited to Mrs. Irene Eberly's home following the event. Our annual picnic will be on Sunday, July 21, at 12:30 at Walter's Meadow. Ladies are asked to bring salad and dessert covered dishes.

## Society 31

Farm Women Society 31 entertained Society 16 at its Monday night meeting. County officers Mrs. Johnson, Mrs. Funk, and Mrs. Diller were also guests. Special music was provided by Glen Hough. Jim Burton of Bledsoe's Flower Shop demonstrated flower arranging with the arrangements used as door prizes.

The summer events begin Thurs., June 20 when Society 31 is entertained by Society 15 at Black Rock. July 15 is the trip to the shore leaving Mechanic Grove Church of the Brethren at 7 a.m. Names of people going are to be given to Mrs. Robert Kauffman of Mrs. James Kreider as soon as possible.

The county picnic is at the Lampeter Fair Grounds in August. Also, members are to be thinking about long dresses for the sew-argument section of the county convention held in the fall.

## Farm Women Calendar

**Saturday, June 22**  
Farm Women Society 4 will entertain Farm Women Society 20.

**Wednesday, June 26**  
7:30 p.m. - Farm Women Society 24 Meeting with Wilma Wenger as hostess.

**Thursday, June 27**  
12 noon - Farm Women Society 11 entertains Society 27 at Huffnagle Park in Quarryville.

7:30 p.m. - Farm Women Society 28 entertain Society 13 at Farm and Home Center

Farm Women Society 26 meeting at the home of Mrs. John Garber, RD2, Mt. Joy.

**Saturday, June 29**  
6:30 p.m. - Farm Women Society 1 family picnic at the Middle Creek Church Pavilion

1:30 p.m. - Farm Women Society 5 meeting at the home of Emma Weaver  
8:00 p.m. - Farm Women Society 29 will entertain their husbands by traveling to the Drum and Bugle Competition in Hershey.

# Farm Women Support Camp

The proposed Jaycee camp for retarded children got a boost from some 1,500 Farm Women members in Lancaster County when the Farm Women Societies decided to support the project financially.

Camp Jaycees Corporation recently notified of the decision expressed its gratitude in a letter read during the executive board meeting of the Lancaster County Society of Farm

Women recently held at the home of Mrs. Paul Kurtz, RD4, Lititz.

The Farm Women Board notified its members that donations for the project should be received by Oct. 1st.

The state Farm Women convention will be held Jan. 6-7 at Harrisburg.

Next board meeting is scheduled for August 7, at the Lampeter Fair Grounds.



**DON'T NEGLECT YOUR EYES**

Visit Your Eye Doctor if you are in doubt.

Doctor's Prescriptions Filled Adjustments, Repairs

**DAVID'S OPTICAL CO.**

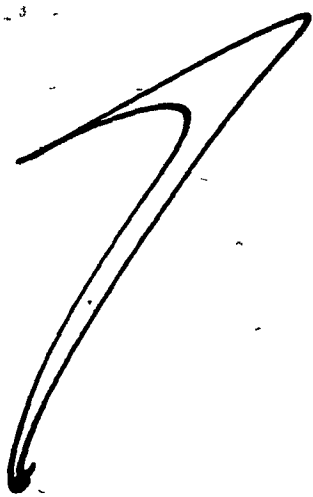
Always See Better  
403 N. DUKE STREET  
Phone 394-2767  
Lancaster

**AWNINGS & PATIO COVERS**  
• CANVAS • ALUMINUM • FIBERGLASS

See Us For  
**STORM DOORS & WINDOWS**

*"Installed by the people with know how for 40 years"*

**Robert J. Hanna Co.**  
LITITZ, PA. PH. 626-8581



ways to benefit

WITH A CHECKING ACCOUNT

1. Good records
2. Safeguard cash
3. Pay by mail
4. Deposit by mail
5. Automatic receipts
6. Save time
7. Business-like money management

Open your Checking Account here!

**OBBNB**

BLUE BALL NATIONAL BANK

BLUE BALL  
354-5163

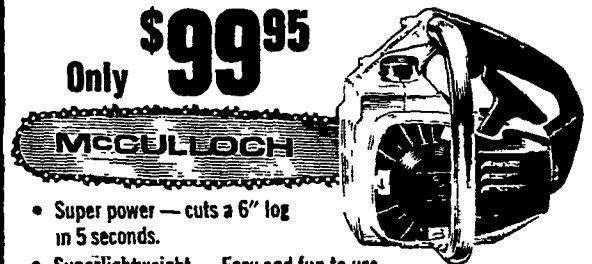
TERRE HILL  
445-6741

"GROWING WITH OUR COMMUNITY"

# McCULLOCH MINI MAC 30

Our lightest chain saw. Our lowest price

Only **\$99<sup>95</sup>**



- Super power — cuts a 6" log in 5 seconds.
- Superlightweight — Easy and fun to use.
- Super capacity — Big 12" bar cuts logs up to 2 feet thick.
- Super Dependability Oils its own bar and chain automatically as you cut.
- Super new chain — cuts up to 20% faster than standard round type chain

THE ALL AMERICAN CHAIN SAW

**CENTRAL TRACTOR PARTS CO.**

1590 MANHEIM PIKE, HIGHWAY 72, NORTH LANCASTER, PA. PHONE 569-0111

**CARL B. KLINE**

1311 REAR FRONT, LITITZ, PA. [BRUNNERVILLE] PHONE 626-6726

You're in Luck When You've Got a McCulloch Chain Saw

# MILLER'S FURNITURE STORE

47 South Broad St., Lititz, Pa. 626-4377

Specializing in Unpainted and Wicker Furniture

OUR PRICES ARE NOT SPECIALS — THEY ARE EVERY DAY LOW PRICES!



For Summer  
**REDWOOD TABLES & BENCHES**  
**DIRECTORS CHAIRS**  
**WICKER PATIO FURNITURE**



A Few Pieces of Finished Furniture — Campaign, Furniture, Wall Shelves, Candle Scences, Napkin Holders, Painted Milk Cans, Doll Cradles, Wall Paper — Martin Senour Paints [Williamsburg Colors] Minwax Stains, Spray Paint & Varnish.

**OPEN DAILY 9-5; THURS. & FRI. 9-9** NOTICE — OPEN JULY 4