



Albert F. Witmer with citation he received for service to his bank from the Pennsylvania Bankers Association.

Witmer Receives Bank Tribute

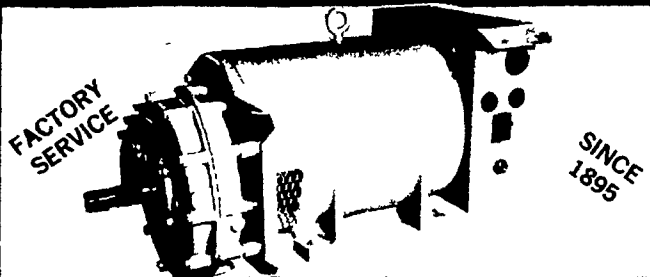
Albert F. Witmer, Director of The First National Bank of Strasburg, was honored by the Pennsylvania Bankers Association at its recent annual convention in Atlantic City, New Jersey. Witmer received a tribute "In recognition of a great record of service to his own bank and to Pennsylvania banking over a remarkable span of years (1912-1974)." Witmer started his banking career in 1912 with the Union Trust Company of Lancaster. From there he went to the Lancaster Trust Company where he became Assistant Treasurer and Assistant Trust Officer. His next move was to the State Bank of Paradise where he served as Cashier and Director. In 1943 he became affiliated with the First National Bank of Strasburg

as Cashier and Director. He retired as Cashier in 1963 but has remained an active Director of the Strasburg Bank.

Witmer has been and continues to be very active in many business, professional and civic organizations. Some of these activities include: Director of Lancaster Federal Savings and Loan, member of the American Institute of Banking, member of the Lancaster County Bankers Association, Trustee and Treasurer of Water Street Rescue Mission, member of the Board of Pensions of the Eastern Pennsylvania Conference of the United Methodist Church, and member of the Masonic Fraternity Lambertion Lodge No. 476.

FIDELITY ALTERNATOR

BUILT IN LANCASTER



LOADSTAR

WHY ACCEPT A LIGHT DUTY "STAND BY" GENERATOR WHEN YOU CAN HAVE FIDELITY'S CONTINUOUS HEAVY DUTY LOADSTAR INDUSTRIAL ALTERNATOR

Super Motor Starting Capability
All Helical Gear Drive No Chains or Belts
FREE DEMONSTRATION on Your FARM without obligation
Buy one FIDELITY LOADSTAR Alternator in your life time.
It's the only one you'll ever need

FINANCING AVAILABLE

JUNE DAIRY MONTH SPECIAL \$100.00 OFF

FIDELITY ELECTRIC COMPANY INC.
332 NORTH ARCH STREET
LANCASTER, PENN. 17603
TEL 717 397-8231

DID YOU KNOW?

CROSSWORD PUZZLES

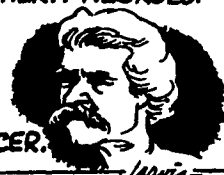
HAVE BEEN ADAPTED TO EVERY LANGUAGE EXCEPT JAPANESE AND CHINESE, WHOSE IDEAOGRAPHS DON'T FIT THE MAKEUP OF MODERN PUZZLES. THE FIRST CROSSWORD PUZZLE TO BE PUBLISHED APPEARED IN THE NEW YORK WORLD IN 1913.



ULYSSES S. GRANT

— OUR 18th PRESIDENT, WAS A HERO ON THE BATTLEFIELD, BUT HIS CAREER IN POLITICS WAS BESET WITH PROBLEMS. MANY OF THE MEN HE APPOINTED WERE CORRUPT. GRANT WOULD HAVE LOST THE ELECTION OF 1868—TO HORATIO SEYMOUR, IF IT WASN'T FOR THE SUPPORT OF SOUTHERN NEGROES.

MARK TWAIN PUBLISHED GRANT'S MEMOIRS, WRITTEN WHILE HE WAS DYING OF CANCER.



TRY A CLASSIFIED AD
PHONE 626-2191 or 394-3047

TRY A CLASSIFIED AD

SEE



SCOTT-MURPHY CHEVROLET
CHEVY TRUCK ACTION TIME
RIGHT TIME! RIGHT PRICE!
RIGHT NOW!



**SPECIAL CONQUISTA CLASSIC
EL CAMINO WITH AIR
IMMEDIATE DELIVERY**

\$3949.00 STOCK # 3538
PLUS TAX & TITLE FEES

Includes: 4 Seasons Air Conditioning — Tinted Glass — Special Two Tone Paint — 350 V8 Engine — Automatic Transmission — Power Steering — Full Wheel Covers — AM/FM Radio — Bumper Guards

Just Arrived for Immediate Delivery
Wide Choice of 4 x 4 Blazers

"THE NICE GUYS"

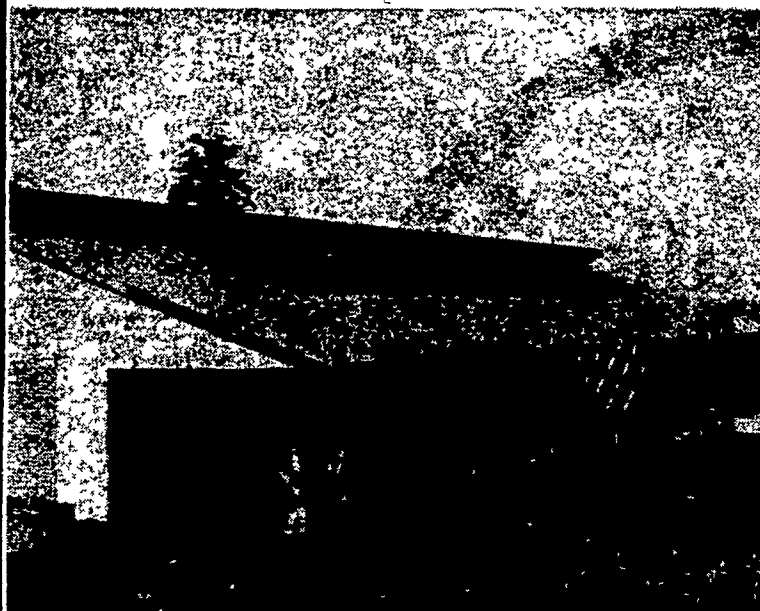
**SCOTT — MURPHY
CHEVROLET**

TRUCK CENTER
1279 Old Harrisburg Pike 397-0601

PUT YOURSELF INTO THE FUTURE!

LET THE SUNSHINE IN WITH...

SOLAIR SYSTEMS



SOLAIR COW BAY WITH THE "SUN SENSOR"

FEATURES THE FOLLOWING:

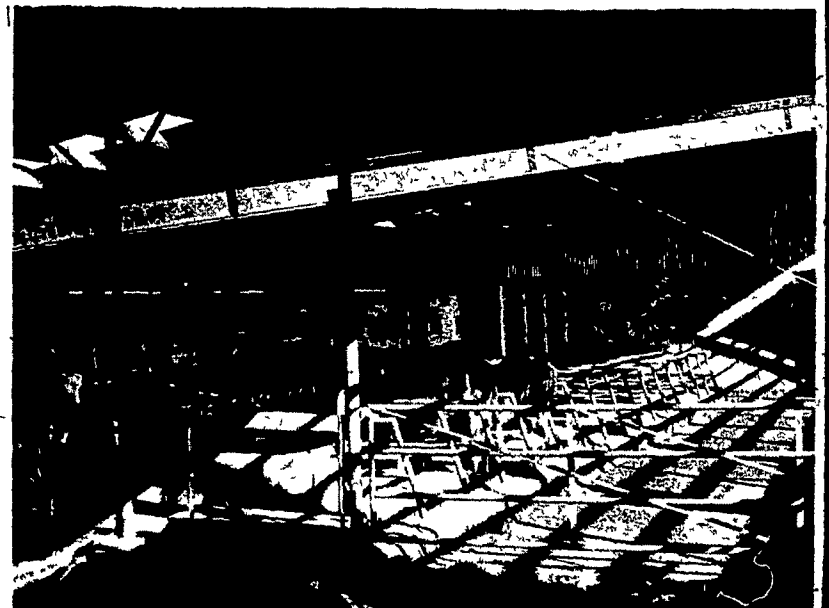
1. Storm and fire-resistant construction.
2. Rapid evaporation and dehumidification through "solar thermo" circulation.
3. Engineered for expansion.
4. Designed for either beef or dairy cattle.
5. Straight line scrape areas.
6. "Quick dry" floor areas.
7. North side ventilation — summer only.
8. Three sided wall structure — open South.
9. "Jalousie type" Southern roof provides direct sun rays on 80 per cent of floor — OPTIONAL.
10. "Sun Sensor" control automatically opens and closes optional jalousie roof for maximum winter comfort.
11. Complete herd grouping accommodations.
12. Automated feed control.

WE'RE INTERESTED IN ECOLOGY!

With our completely covered lots and a sun roof with an open peak, rain water does not enter the bay area and maximum evaporation of animal liquids is obtained. An "all-drained" floor system is installed and a curbed fence line keeps manure in place to be scraped into a liquid pit or a push-off loading system. By preventing manure run-off the surrounding area is not polluted.

Yes, since your urban neighbors and government fathers are interested in ecology, we are ready to help you build a system that will put you ahead on the pollution problem.

And, low moisture levels in Solair Systems results in less bacteria action and fewer odors.



DISTRIBUTORS FOR:

- VAN DALE, INC.
- VAUGHAN
- PAMLIN
- MADISON SILOS
- MECHANIZED FEED LOT SYSTEMS

CALEB M. WENGER, INC.

R. D. 1 Drumore Center, Quarryville, Pa.

Phone 548-2116