

Dairy Princess

(Continued from Page 1)

also a member of the field hockey and tennis teams at Solanco High School.

Diane M. Crider, 16, daughter of Mr. and Mrs. Fred Crider, Nottingham, RD2. Diane is a member of the Lancaster County

Guernsey 4-H Club and sings in the Calvary Independent Church Choir. At Solanco High School, she participates in the band, national honor society, the school newspaper and girls basketball.

Christine Erb, 17, daughter of Mr. and Mrs. Wilbur Erb, Mount Joy, RD1. Christine is a member of the Mount Joy 4-H Sewing Club and 4-H Cake Club, the Donegal 4-H Community Club, the Red Rose 4-H Baby Beef Club, and the Lancaster County 4-H County Council. She is a member of the Future Nurses Club at Donegal High School, and a member of the Marietta Congregational Bible Church.

Brenda Eshleman, 17, daughter of Mr. and Mrs. Kenneth Eshleman, Elizabethtown, RD1. Brenda is a 4-H'er and belongs to her church's youth group. At Donegal High School, she belongs to the Future Nurses Club, the band color guard and the Newspaper Club.

Linda Kauffman, 16, daughter of Mr. and Mrs. Robert Kauffman, Elizabethtown, RD1. Linda belongs to the Lancaster County 4-H Holstein and Guernsey Clubs and was on the county's 1973 4-H Dairy Judging Team. She is a member of the Mount Joy 4-H Sewing Club, the Congregational Bible Church Youth Group, and belongs to the Elizabethtown High School Band Front and Chorus.

Sandy Kreider, 18, daughter of Mr. and Mrs. J. Richard Kreider, Manheim, RD3. Sandy is a member of the Red Rose 4-H Baby Beef Club and the Mt. Joy Mennonite Church. At Manheim Central High School, she is in the high school band front and a member of the Future Business Leaders Club.

Pa. Broiler Placements Down 4 pct.

Placements of broiler chicks in the Commonwealth during the week ending June 1, 1974 were 1,244,000. The placements were 4 percent below the corresponding week a year earlier, and 9 percent below the previous week. Average placements during the past 10 weeks were 3 percent below a year earlier.

Settings for broiler chicks were 2,141,000 - approximately the same as the previous week and 13 percent above the comparable period a year earlier. The current 3-week total of eggs set is 6 percent above the same period a year ago. Inshipments of broiler-type chicks during the past 10 weeks averaged 1,000 compared with 1,000 a year ago.

Outshipments averaged 260,000 during the past 10 weeks, 8 percent below a year earlier.

21 States: Placements in the 21 States were 61,723,000 - 3 percent below the previous week and 2 percent below the same week a year earlier. Average placements during the past 10 weeks were 1 percent below a year ago.

Settings were 75,463,000 - 1 percent below the previous week and 2 percent below a year earlier. The current 3-week total of eggs set is 3 percent below the comparable period a year ago.

TRY A CLASSIFIED AD
PHONE 626-2191 or 394-3047

NELSON WEAVER & SON

RD2
Lititz, Pa.

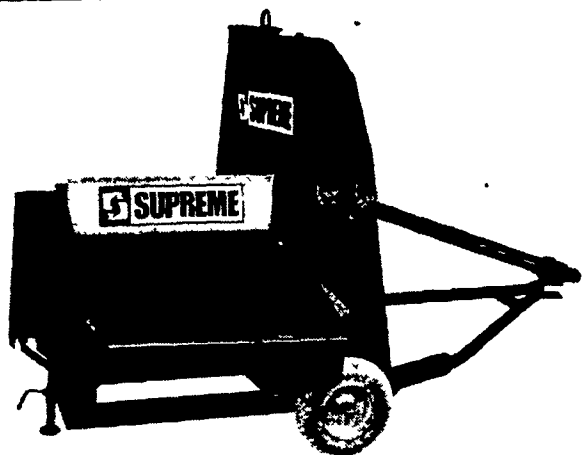
49% SOYBEAN MEAL

BULK or BAGGED

For the Lowest Prices in the Area
Call Today

PHONE 626-8538

WE SELL
Negley-Miller Silos
For More Information Call:
GUTSHALL SILO REPAIR
R.D.1, Womelsdorf, Pa. 19567
Phone 717-933-4616



Wide, Low Hopper With Shaker Pan

SUPREME 56 with 20" hopper height gives ample clearance with lowest self unloading forage box 34" hopper width makes it easy to place wagon.

We also sell and install
Lancaster Level-Flo permanent pipe
and distributor.

GUTSHALL SILO REPAIR
R.D.1, Womelsdorf, Pa. 19567
Phone 717-933-4616

TRY A CLASSIFIED AD
PHONE
626-2191 or 394-3047

CONTROL WEEDS IN ALFALFA WITH BUTYRAC-118

Apply 2 to 4 weeks after alfalfa emerges. Controls broadleaf weeds in seedling or established legumes. This remarkable selective action — killing many broadleaf weeds without affecting certain broadleaf crops — has been proven by research men and commercial growers throughout the country.

We are distributors for a complete line of

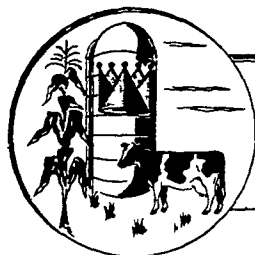


WEED KILLERS

P. L. ROHRER & BRO., INC.

Smoketown, Pa.

397-3539



KEY TO PROFIT
AGRI-KING, inc.
PERSONALIZED FEEDING PROGRAMS
FULTON, ILL.

From Field . . .
To Storage . . .
To Livestock . . .

Preserve Maximum Nutrient Content and Palatability
by using

"Silo-King" Silage Preservative:

DON'T WASTE A THING, YOUR CROPS
ARE TOO VALUABLE

- Hay or haylage value ranges from \$20.00 to \$80.00 per ton in feeding value: on a 10 percent dry matter basis.
 - Due to the ever increasing cost of feeding and maintaining livestock, your future may depend on your handling of roughage in the most profitable manner.
 - To prevent weather loss in making haylage, mow in the morning after the dew is off and chop that afternoon on a good drying day.
 - And to help prevent heating, vitamin loss, energy loss, protein loss, and silo-stink, apply "SILO-KING" silage preservative.
 - Another bonus from using "SILO-KING" is greater silo capacity. This is due to the higher moisture content that's possible to maintain by using "SILO-KING"
- For outstanding results, proven again and again in 23 states and Canada.
For higher feeding value and greater silo capacity.

ASK YOUR LOCAL DEALER TO SEE YOU
Write or Phone

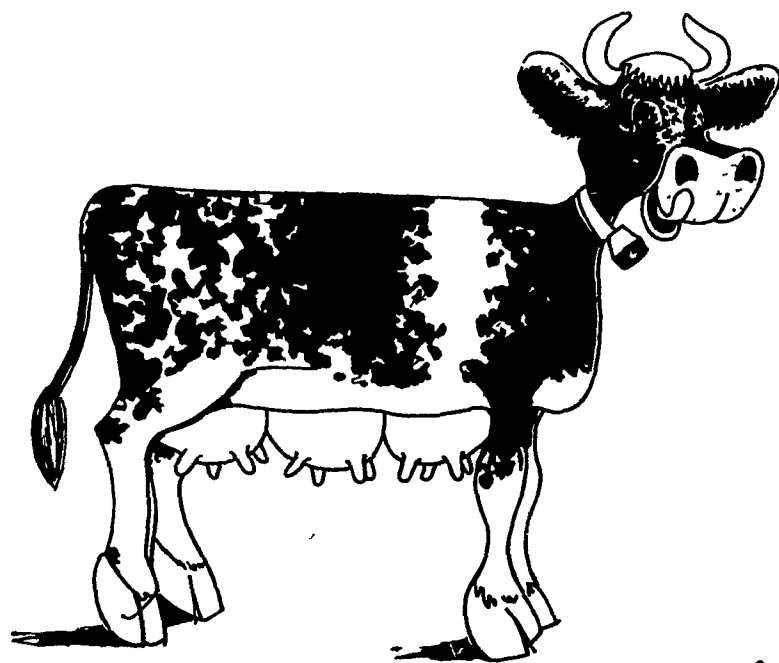
GEORGE F. DELONG

STATE MANAGER P.O. BOX 683, LITITZ, PA. 17543

Call Collect: 717-626-0115

"SILO-KING" - Manufactured by Agri-King, Inc.
Fulton, Ill.

HARVESTORE® Fed Cows Produce More Milk



PENN-JERSEY HARVESTORE SYSTEMS, Inc.

P. O. BOX 91

NEW HOLLAND, PA.

PHONE 717-354-5171