

Poultry Market Reports

WEEKLY NEW YORK EGG MARKET

From Tuesday, May 28 to Friday, May 31

	Mon.	Tues.	Wed.	Thurs.	Fri.
WHITE					
Fcy. Ex. H					
Large O	48½	48½	48½	48½	48½
Large I	45	45	45	45	45
Mediums I	37	37	37	37	37
Pullets D	32	32	32	32	32
Peeweese A	25	25	25	25	25
Y					
BROWN					
Fcy. Lge. Unquoted	48	48	48	48	48
Mediums Unquoted					
Pullets Unquoted					
Peeweese Unquoted					
Off Grade					
Large	40	40	40	40	40
Checks	29	29	29	29	29

Tone — Steady.
Copyright 1974 Urner Barry Publications

NEST RUN EGGS

Prices are from Egg Clearinghouse, Inc., (ECI) Durham, N.H. and reflect trading prices for gradeable nest run eggs (GNR) on ECI, a nationwide trading center for producers, packers and marketers. GNR eggs are classified by weight in 30-dozen cases, and traded in lots of either 300 or 750 cases. Prices are FOB buyers dock, and are computed Tuesday and Thursday of each week. This week's prices for each classification were:

Classification	New Weight Per Case	Wednesday	Friday
Extra Large	51 lbs.	0	0
Class 1 - Large	48 lbs.	38	38
Class 3 - Medium	42 lbs.	30	30
Class 4 - Small	39 lbs.	26	26
Breaking Stock	48 lbs.	36	36
Checks	48 lbs.	30	30

WHERE IN THE WORLD?

A QUIZ TO TEST YOUR KNOWLEDGE OF GEOGRAPHY AND CURRENT EVENTS

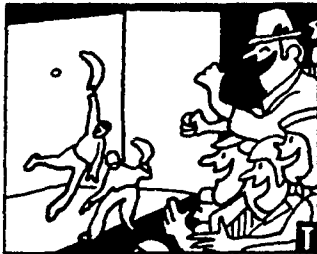
Where is this city?
CLUES The oldest city in the Western Hemisphere and a capital since 1325, it's full of magnificent modern architecture and surrounded by awe-inspiring ancient mysteries. There you can see open air art shows, jai alai games, ballet, horse-racing, gambling, public concerts in the parks and bull-fighting in the world's largest bull ring.

It's an excellent place for silver, handwoven textiles, leather goods, lacquer work, baskets and masks, and you can also buy records made by the native mariachi bands.

A delicious local dish is *mole de guajolote* — turkey in spicy chocolate sauce, and the native drink is tequila, which goes to the head very fast in this city's high altitude.

Its world famous "Pink Zone" is packed with exciting night clubs, elegant restaurants, and other attractions, including the Holiday Inn hotel with pool, restaurants and night clubs of its own. On September 15th, they

ring their Liberty Bell and celebrate with fireworks. In 1957, an earthquake caused great damage to the



city and, since it rests on a lake bed filled with light volcanic ash, some of the streets sink 12 to 14 inches a year!

This city is in (a) Peru (b) Brazil (c) the United States (d) Mexico

ANSWER. (d) The city is Mexico City, an Aztec, Spanish and Mexican Capital. For more information about visiting this exciting city write to:

Carlos Christensen
Mexico City Downtown
Holiday Inn
Liverpool #155, Mexico 6 DF, Mexico

Baltimore Eggs

Wednesday, May 29
Baltimore eggs: market steady. Demand slow to fair. Supplies are ample on all sizes.

Cartoned eggs: prices to retailers, state graded (min. one case sale) white Grade A Large 52-58, mostly 52-54; Grade A Medium 44-50, mostly 44-46.



PROTECTING YOUR PLOT

If it sometimes seems hard to tell what will destroy your lawn first—the crab grass or the insects—you may be relieved to learn you can get them before they get to find out!

Crab grass is an annual that develops from seeds produced the previous year—usually



around August. If you trim off the tops before that, you can keep a lot of weeds from coming back. It will also loosen its grip on your greenery if attacked with weed eradicators, or pulled out by hand. In addition, you can plant a bluegrass like Merion which works to crowd it out. Another way to keep that weed down is with water. Crab grass delights in a light spray so when you water your lawn, drench it up to six inches deep!

Even when the crab grass is dead, your lawn may still be alive with ants, sod webworms, lawn billbugs, white grubs and chinch bugs. And they're awfully prolific. A single female chinch bug can lay 500 eggs in one season! You can divest yourself of this infestation, and get rid of about 120 other bugs besides, with an all-purpose, nonpersistent insecticide called Spectracide. It contains Diazinon and is effective in protecting your lawn against tough bugs.

Hopefully, these grass tips will help you help your lawn become rooted in health!

TRY A CLASSIFIED

Fogelsville

May 21, 1974
(Prices paid dock weights cents per lb.)

Hens, light type 5-12; Hens, heavy type 6-24, mostly 12-20; Pullets 28-40, mostly 30-39; Roasters 28-41, mostly 29-37; Ducks 50-53; Rabbits 60-89, mostly 75-85; Guineas 1.40-1.40½; Pigeons (per pr.) 1.26-4.10.

Total coops sold 368.
Poultry received Monday 7 p.m. to 10:30 p.m. Tuesday 7 a.m. to 12 Noon. Sale at 11:30 a.m.

Directions — Take Rt. 22 thruway. Exit at Fogelsville exit. North on stoplight in Fogelsville, turn left, proceed 1 mile.

Sale of Tuesday, May 28

Hens, heavy type 5-20½, mostly 9-20; Pullets 16-39, mostly 35-39; Roasters 19-39, mostly 34-37; Ducks 48-61, mostly 48; Drakes 43-48½; Geese 32-38; Rabbits 60½-85, mostly 80-85; Guineas 1.50½; Pigeons (per pr.) 1.60-4.00½.
Total coops sold 225.

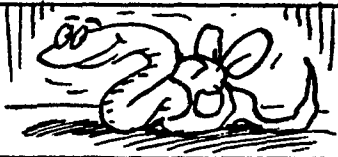
Philadelphia Eggs

Wednesday, May 29

Prices unchanged. Cartoning demand fair for adequate stocks of Large and Mediums, barely adequate on Extra Large. Undertone more confident.

Prices to retailers: Sales to volume buyers, consumer grades white eggs in cartons, delivered: store door A Extra Large 50-51½; A Large 49-50½; A Medium 39-40½.

The hairworm, which is as thin as a hair and can be found in running waters, is the only living creature that can tie its body in knots.



HIGH PRESSURE WASHING

OF POULTRY HOUSES AND VEAL PENS

BARRY L. HERR

1744 Pioneer Road, Lancaster, Pa
Phone 717-464-2044

NEW ENGLAND WEEKLY SHELL EGG REPORT

Tuesday, May 29, 1974

Prices paid per dozen Grade "A" brown eggs in cartons delivered to retail stores:

	EX LARGE	LARGE	MEDIUM	SMALL
MASS+	50-63	48-58	40-51	27-41
Mostly	52-55	50-53	42-45	29-32
NEW HAMP	50-57	48-55	40-47	27-38
Mostly	52-53	50-51	42-43	29-30
R. I.	56-57	54-55	46-47	33-34
Mostly				
VERMONT	54-60	52-58	44-50	
Mostly				
MAINE	54-56	52-54	44-46	31-33
Mostly				

+ Includes Central & Western Sections Only.

Eastern Pa. & N. J.

Live Poultry Report
May 29

Prices unchanged on light type hens, though a firming undertone prevails. Offerings lighter than past weeks. Demand fair to occasionally good as processors secure supplies to keep operating time near capacity. Offerings of heavy type adequate for a fair call.

Prices paid at farm: Light type hens 4-5, mostly 4-5 in Pa.; Mostly 4-5 in NJ. Heavy type hens TFEWR.

Delmarva

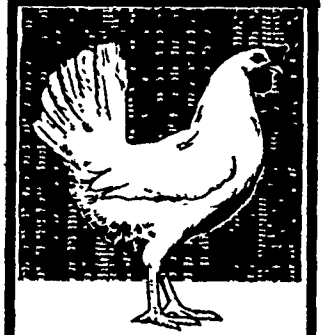
Broiler-Fryer Market
Wednesday, May 29

Ready to cook movement very good with overall slaughter near record levels for Delmarva. Less than trucklot prices ranged higher on Plant Grade while mostly unchanged on other classes. Advance interest good; however, trading too limited to quote prices. Live supplies fully adequate to ample with weights in a wide range. Undertone firm.

Current broiler-fryer negotiated prices for immediate delivery mostly multiple-drop shipments to

New York City from Delmarva:

Range: US Grade A 33¼-38; Plant Grade 33¼-35; Premium US Grade A 37-39; Premium Plant Grade 35-37. Weighted Average: US Grade A 37.77; Plant Grade 34.29; Premium US Grade A 38.50; Premium Plant Grade 36.91.



sustain top production with the **BABCOCK B-300**

Keeping production up ... costs down ... is the profit key in poultry operations. And more and more records on commercial flocks of Babcock B-300's ... "The Businessman's Bird" ... show sustained production of top quality eggs ... often with an additional 20 to 30 eggs per bird housed over other strains. Come in ... look at the records and the B-300 ... "The Businessman's Bird".



BABCOCK FARMS

Telephone [717] 626-8257
Telephone [717] 626-8561

TRY A CLASSIFIED AD

Lancaster Farming

P.O. Box 266 - Lititz, Pa. 17543
Office: 22 E. Main St., Lititz, Pa. 17543
Record-Express Office Bldg.
Phone: Lancaster 717-394-3047
or Lititz 717-626-2191
Richard E. Wanner, Editor

Subscription price \$2 per year.

Established November 4, 1955

Published every Saturday by Lancaster Farming Lititz, Pa

Second Class Postage paid at Lititz, Pa 17543

Members of Newspaper Farm Editors Assn., Pa. Newspaper Publishers Association, and National Newspaper Association.

IMPORTANT NOTICE

On June 4th, beginning at 1 P.M.,

THE FIRST FEEDER PIG SALE WILL BE HELD AT THE LANCASTER STOCKYARDS.

All pigs consigned to the sale must arrive that day between 7 A.M. and 11 A.M., at which time they will be state inspected for health, state graded and sorted and then weighed and penned. Trucks bringing pigs from out of the state must be disinfected and all pigs bought at the sale must be loaded out not later than midnight, June 4th.

Since all pigs must be tagged it is suggested that the consignors tag their pigs at the farm, thereby saving 25 cents per pig expense. Tags for this purpose can be picked up at Dunlap's office.

We respectfully solicit your consignments which will be handled by a staff of experienced and well qualified personnel. For further information call (717) 397-5136.

WALTER M. DUNLAP & SONS

Capable Service To The Livestock Industry Since 1898