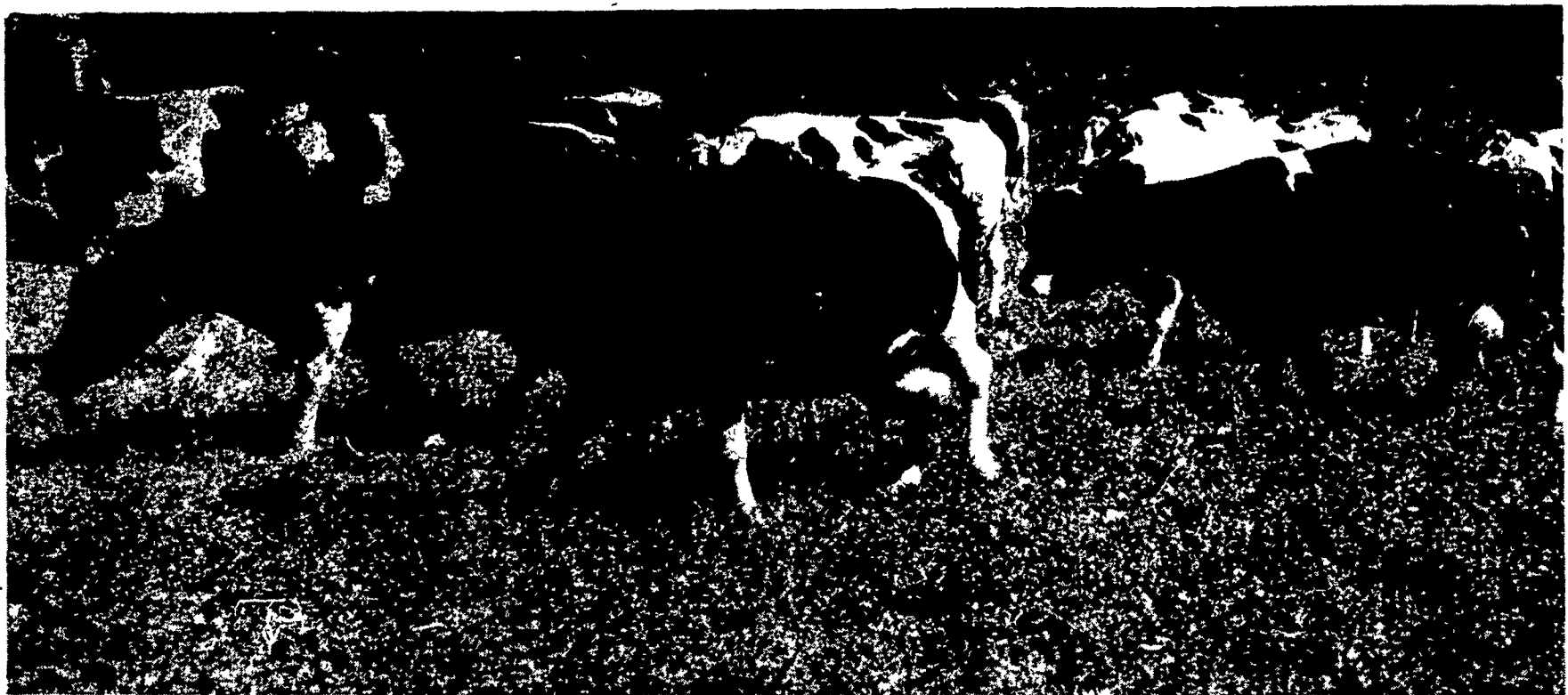


# AGWAY

# LPS

## MILK-CHECK PROTECTION

### WHEN YOUR COWS GO ON PASTURE



Although high in protein at the start, spring pastures deteriorate rapidly — and your cows and heifers will know it before you do. You will not be aware of it until milk production starts to suffer. And it may take more time and money than you'd like to bring production back up again.

What can you do to prevent pasture slump?

**PUT AN AGWAY LPS FEEDER IN YOUR PASTURE FOR COWS AND HEIFERS.**

**LPS IS THE SENSIBLE LIQUID PROTEIN SUPPLEMENT FOR THESE REASONS:**

- LPS supplies protein to compensate for the decline in pasture quality.
- Cows and heifers offered LPS free-choice tend to adjust their consumption to more closely balance their protein needs.
- LPS has the slowest ammonia release among leading supplements offered in the Northeast. (Slow release assures optimum nutrient use).
- LPS is an economical source of protein.
- LPS is a safe, efficient way to feed urea.
- Free-choice LPS means no labor. Agway fills the feeder, cows and heifers help themselves.

**CALL YOUR LOCAL AGWAY TODAY.**

**GET ALL THE DETAILS ON LPS -- THE SENSIBLE LIQUID PROTEIN SUPPLEMENT.**

**G & G FEED & SUPPLY**  
Manheim  
665-5001

**HENRY B. HOOVER, INC.**  
Ephrata  
733-6593

**LANCASTER STORE**  
394-0541

**THOUGHT  
FOR THE WEEK**

*Cheerful Hearts and  
Smiling Faces  
Brighten the Darkest  
Places*

**NEW HOLLAND STORE**  
354-4526

**QUARRYVILLE STORE**  
786-2126

**SALUNGA STORE**  
898-2248  
653-1864