

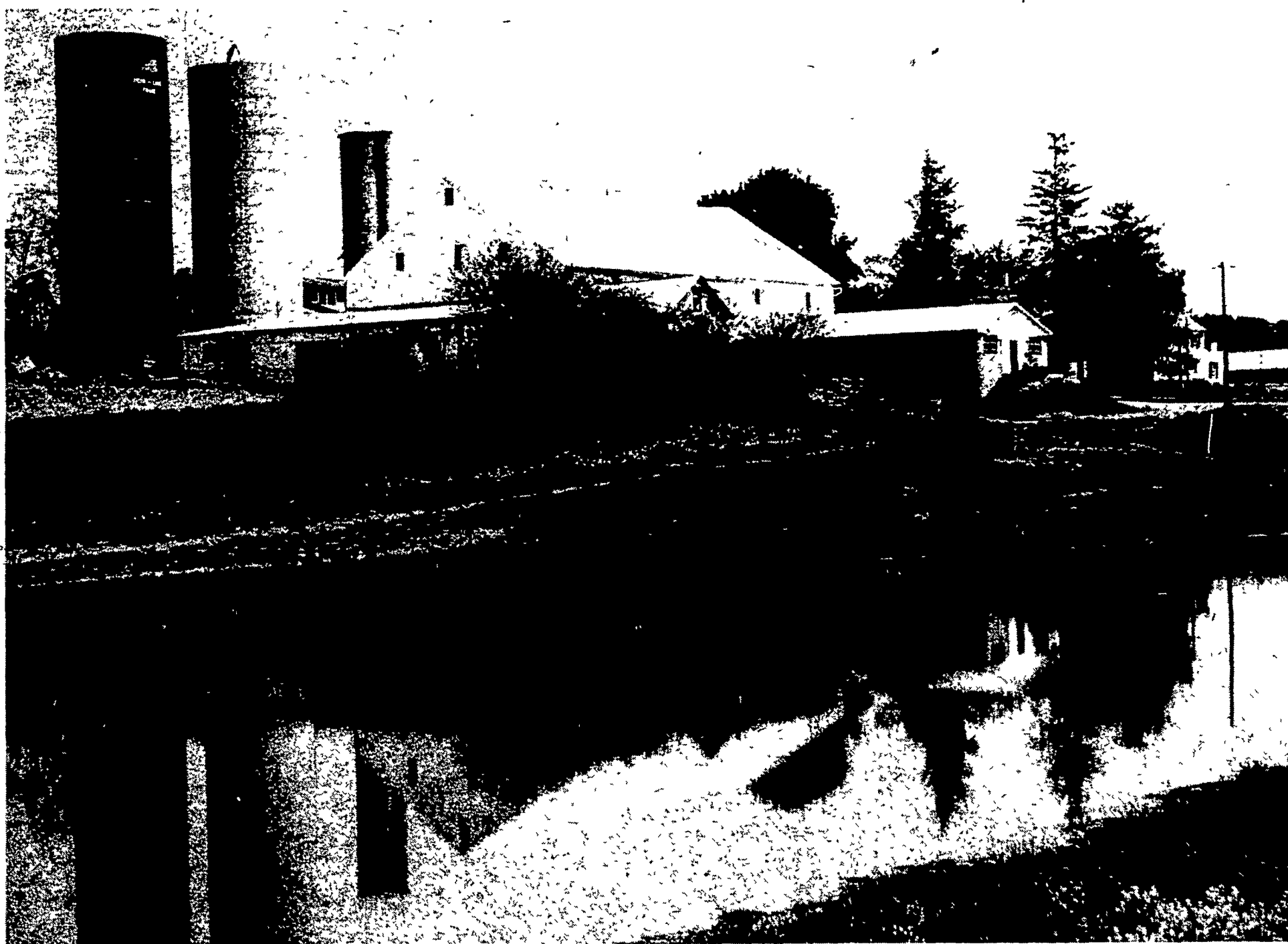
You're Invited to Attend

LANCASTER COUNTY HAYLAGE DEMONSTRATION

Wednesday, May 29th, 10:00 a.m. - 2:00 p.m.

RAIN DATE - FRIDAY, MAY 31 - Same Time

RALPH MYER FARM The Myer Farm is located Northeast of Elm. Four tenths mile on Speedwell Forge Road to Airy Hill Road, Farm on Right.



HIGHLIGHTS

- See HARVESTORE'S New Closed Filler System in use on the new 25 x 80 HARVESTORE at Myer's; the first in Lancaster County. No more climbing!!!
- Witness field demonstrations of the John Deere 3800 Chopper with electric controls; 216 Forage Wagons, and 66 Blower.

- Moisture testing of forages will be conducted and sampling techniques of feeds for laboratory analysis will be shown.
- Take a break during your day anytime between 10:00 a.m. and 2:00 p.m., and see the latest in haylage systems, from field to feeding. Refreshments will be available all day long so come on over.

Sponsored By:

Casupa Servos Seed Corporation

SPECIALISTS IN GRASSLAND FARMING
HAY AND PASTURE MIXTURES

SHOTZBERGER'S
ELM, PA. PHONE 665-2141



Penn-Jersey Harvestore Systems, Inc.

P.O. BOX 91, NEW HOLLAND, PA.
(717) 354-5171