

# Plain & Fancy Celebrates Eighth Anniversary

Lunch and refreshments were served to all employees on the occasion of Plain and Fancy Egg Ranch's 8th Anniversary. Mr. Henry Bowman and Mrs. Gloria Sweigart received awards for the most years of service. The company wishes to express its appreciation to

all employees who are responsible for its continued growth and success.

Plain and Fancy employs one hundred fifty-five personnel and has egg production in five countys. All eggs are processed and marketed in a seven state area.

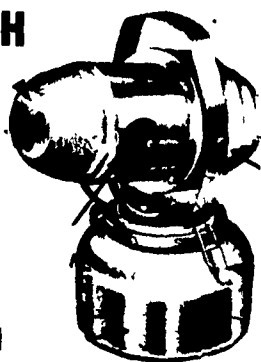
Plain & Fancy has been a consumer oriented company in egg merchandising and educating Mrs. House Wife with the nutritional value of eggs and the need in our daily diets.



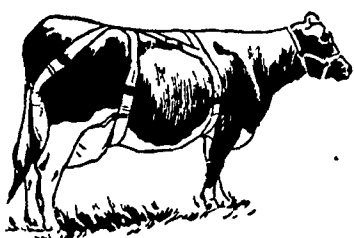
Officers of Plain and Fancy Egg Ranch, Inc. are shown above with cakes commemorating the eighth anniversary of the firm. Pictured left

to right are Paul Hess Jr., vice president, John Snader, treasurer, Paul Hess Sr., president and Claude Hess, secretary.

## CONTROL FLIES WITH A FOGMASTER AND HOFFMANS FLY SPRAY



- CORN SEED TREATMENT
- SHOVELS — HOES — RAKES
- GARDEN HOSE
- GOLDEN MALRIN FLY BAIT
- KNAPSAC SPRAYERS (ALL SIZES)



SUPPORT YOUR COWS! WITH A **TAMM UDDER SUPPORT**

- + CATTLE & HOG MINERALS
- + CUSTOM CANVASS WORK

## AARON S. GROFF & SON

FARM & DAIRY STORE  
R D 3, Ephrata, Pa 17522 (Hinkletown) Phone 354-0744  
Store Hours 7 A M to 9 P M  
Closed Tues & Sat at 5 30 P M

## Tax Loss Ceilings Affect Few Farmers

Few farmers would be affected if recent proposals limiting the amount of arm loss which can be used to offset nonfarm income were made law, according to a recent publication issued by the U.S. Department of Agriculture (USDA). However, added tax liabilities could substantially increase Federal income tax revenues.

USDA's Economic Research Service studied the effect of limiting farm loss to \$10,000, \$20,000, and \$30,000, since many tax reform

proposals suggest similar cutoffs. Limiting farm loss to \$10,000 would have meant higher taxes for 3.3 percent of the 1.3 million individuals reporting a farm loss in 1970, adding \$258 million in Federal tax revenues. A \$20,000 limitation would have affected 1.2 percent of the loss returns and boosted tax revenues by \$166 million. And a \$30,000 limitation would have affected 0.6 percent of farm loss returns, raising \$122 million in revenues.

The report also discusses characteristics of farm loss returns. For instance, more than 90 percent of reported farm losses were under \$50,000 in 1970, while 3 percent were \$25,000 or more. Individuals reporting losses represented 43 percent of the total number filing farm tax returns in 1970. This percentage has been trending upward in recent years.

Single copies of "Tax Loss Farming," ERS-546, are available free on postcard (please include zipcode) or telephone (447-7255) request from the Division of Information, Economic Research Service, U.S. Department of Agriculture, Washington, D.C. 20250.



## For high efficiency at low cost feed your cows Checkerboard Dairy

You can take advantage of present high milk prices by getting your cows to produce at their bred-in ability — at a low cost Checkerboard Dairy is the milking ration for the dairyman who wants a highly efficient, yet a low-cost ration for his herd. Checkerboard Dairy has a balance of vitamins, minerals and protein cows need for top performance. And it's a complete milking ration, high in molasses for added palatability and pelleted for easy handling and feeding.

Put your herd on Checkerboard Dairy. See us today — and let Checkerboard Dairy help your cows produce all the milk that's bred into them — and let you take advantage of today's good milk prices.

### Wenger's Feed Mill Inc.

Ph: 367-1195  
Rheems

### West Willow Farmers Assn., Inc.

Ph: 464-3431  
West Willow

### Ira B. Landis

Ph: 665-3248  
Box 276, Manheim RD3

### John J. Hess, II, Inc.

Ph: 442-4632  
Paradise

### James High & Sons

Ph: 354-0301  
Gordonville

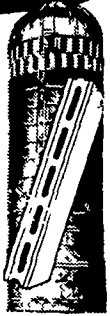
### John B. Kurtz

Ph: 354-9251  
R D.3, Ephrata

- MORE MILK • MORE MEAT
- MORE PROFIT

## MADISON SILOS

- Feed high-quality, nutritious, corn and grass silage all year for more milk, more meat and more profit
- Low original cost
- Low upkeep cost
- More than 60,000 Madison Silos in use



### MADISON SILOS

Div. Chromalloy American Corp.

1070 Steinmetz Rd.  
Ephrata, Penna. 17522  
Ph. 733-1206

### LOCAL DEALERS

Frank Snyder  
Akron 859-2688

Caleb Wenger  
Quarryville 548-2116

Landis Bros. Inc.  
Lancaster 393-3906

Carl L. Shirk  
Lebanon 867-3741

Sollenberger Farm Supply  
Centerport, Pa.  
Ph. 215-926-7671

## STANFORD TRIPLE "S" Sorghum-Sudangrass Hybrid

# GREAT WAY TO STEP UP LIVESTOCK FEED PRODUCTION



### CHECK THESE ADVANTAGES

All over the country there has been a booming demand for fast-growing high-yielding annual forage grasses to boost livestock feed production. TRIPLE 'S' is one crop that is filling this need. Here in summary are some of the advantages of this exceptional sorghum-sudan-grass hybrid.

**COMES UP FAST** — establishes easily, needs no special pampering.

**SPEEDY RECOVERY** — can be pastured or cut frequently.

**TRIFEMENDOUS YIELDS** — up to 50 percent more forage than some common sudangrass varieties.

**PALATABLE** — your livestock will love it.

**NUTRITIOUS** — high in Protein, TDN value.

**HIGHER CARRYING CAPACITIES** — big yields can mean more cattle per acre.

**STRONG STALK** — stands up well to heavy winds.

**USES FULL GROWING SEASON** — takes advantage of full yield potential when used for silage.

**HIGH LEAF RATIO** — leaves are large, plentiful, cover full plant height.

Available through Stanford Seed Company Dealers

RED ROSE FEED & FARM SUPPLY Div of Carnation Quarryville, Pa	F. M. BROWN'S SONS, INC. Sinking Spring, Pa Birdsboro, Pa	LANCASTER BONE FERT. CO. Quarryville, Pa Oxford, Pa
REIST SEED CO. Mount Joy, Pa	FARMERS SUPPLY CO. 215 E. Fulton St Lancaster, Penna	GEHMAN FEED MILL Denver, Pa
MARTIN FEED MILL RD#3, Ephrata, Pa	SWATARA CREEK MILL RD1, Myerstown, Pa	E. H. KEEN & SON Atglen, Pa
LEROY SENSENIG MILL Hinkletown Pa	JE'MAR FARM SUPPLY Lawn, Pa	OXFORD GRAIN & HAY CO. Oxford, Pa

## STANFORD SEED COMPANY

P. O. Box 230 Plymouth Meeting, Pa. 19462

