

USDA Slides Urge Energy Conservation

Conservation of our energy resources is the message of a new slide set and filmstrip just released by the U.S. Department of Agriculture. "Fuel for Food" is a 94-frame presentation that

urges Americans to continue to conserve gasoline and other forms of energy so farmers will be assured of a dependable supply to meet the food needs for this country.

The slide presentation, available with soundtrack on cassette, is designed to help consumers understand the relationship between the amount of energy they use in their daily routine and the amount needed to grow their food supply. It stresses the critical need farmers have for a constant supply of energy, from fuels to run tractors and to warm baby chicks to fertilizers to make plants grow. "Fuel for Food" explains why farmers need to be sure their fuel and energy requirements will be met throughout the food and fiber production cycle.

The presentation was developed with the aid of the

Lung Association Lists Programs

Miss. Velma Hart Executive Director, announces the regular monthly program of the Lancaster County Lung Association to be held at the Association office, 630 Janet Avenue, University of Wisconsin.

The slide set can be purchased for \$25 from the Photography Division Office of Communication, U.S. Department of Agriculture, Washington, D.C. 20250. Order the filmstrip for \$11.50 from Photo Lab, Inc., 3825 Georgia Ave., N.W., Washington, D.C. 20011. Price includes two copies of an illustrated narrative guide and a soundtrack on cassette pulsed with both 1,000 Hz and 50 Hz signals to change slides automatically when proper equipment is used.

Lancaster, Pennsylvania on Tuesday, May 7, 1974. The hours are 10 to 12 noon, 1 to 5 and 6:30 to 8 p.m. Chest x-ray, tuberculin testing and diabetes screening will all be offered. Persons having the tuberculin test will be asked to return Thursday, May 9 for results.

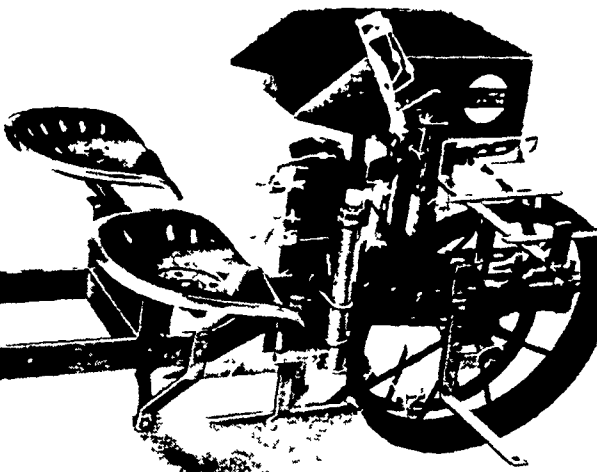
Wednesday, May 8 the Association will conduct a screening program at Lititz Fire Hall, Lititz, Pennsylvania. Chest-x-ray, tuberculin testing and

diabetes screening will also be offered at this location. Hours will be 10 to 12 noon, 1 to 5 and 6:30 to 8 p.m. Persons having the tuberculin test will be asked to return Friday, May 10 for results.

We continue to recommend chest x-ray for those persons over 40 years of age. The diabetes screening will be more accurate if taken two hours after eating a normal meal.

Not Brag, Just Facts?
Texas currently leads the nation in annual production of rice, onion, cotton, grain sorghum, sheep, goats, beef cattle, and wool. It also harvests substantial amounts of peanuts, vegetables, citrus fruits, honey, cereal grains, soybeans, turkeys, and dairy products.

"THE GENUINE MECHANICAL TRANSPLANTER"



- Amazing "Flo-Check" Water Valve (Patented) with Magic Air Control to assure uniform water supply to the plants regardless of water level in barrel
- Manual Shutoff with Automatic Roller Reset on Valve.
- Positive Action, Self-Cleaning, Neoprene Plant Grippers.
- Bronze Oilite Main Bearings
- Large Adjustable Plant Trays
- Both Tractor and Horsedrawn.

SOLD and SERVICED by
LESTER A. SINGER
Ronks, Pa.
Phone Strasburg 687-6712

Document Published on 'Rights' for Retarded


For many years parents of the mentally retarded have been requesting a document to understand the legal rights of their mentally retarded children. The Pennsylvania Association for Retarded Citizens has just compiled and published a very succinct reference booklet designed to assist parents in identifying appropriate services and programs that they need.

A special committee of professionals from the service area and the legal field has worked for two years in developing the one hundred page manual entitled, "Legal Rights of the Mentally Retarded." For-

mer Attorney General Fred Speaker commented, "The book is a well needed compendium in a field where the law is undergoing rapid changes." Committee member Judge Edward Bradley of Philadelphia said, "This popular document will be extremely helpful to professionals as well as to parents."

The timely publication of the book coincides with a proclamation from the President's Committee on Mental Retardation declaring April as "Legal Rights for Retarded Citizens Month."

TRY A CLASSIFIED



Is this trip really necessary?

Not with a Volume-Belt cattle feeder on the job!

Let the Volume-Belt cattle feeder "belt it out" quietly for fast feeding without separation.

Jamesway works so you can farm

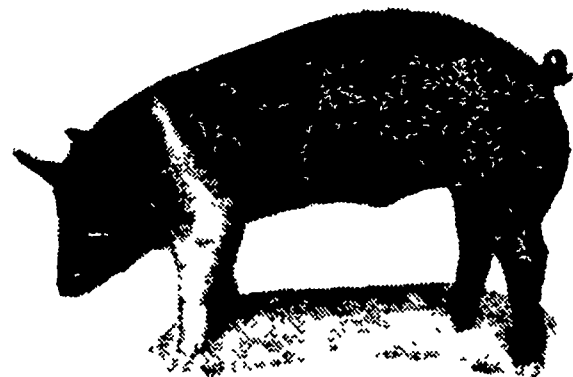
YOU CAN COUNT ON US

GRUMELLI'S FARM SERVICE
Robert Fulton Highway
Quarryville, Penna. 17566
Phone: 717-786-7318

FARM CREDIT SERVICE

THIS LITTLE PIG WENT TO MARKET RIDING ON A FARM CREDIT LOAN

A dependable source of credit is essential to farm growth and operation. Farm Credit knows and understands the special needs of the farmer because Farm Credit is farmer-owned. And, deals only in farm loans, Farm Credit is as near as your telephone. Call today. Get a line on the best credit available for farm needs.



411 W. ROSEVILLE RD.,
LANCASTER
PH. 393-3921

AGWAY BUILDING,
LEBANON
PH. 273-4506

