

Lancaster Farming Photos for Sale.

If you'd like prints of any Lancaster Farming photographs, we'll be happy to make them for you. To order, just complete the form below and mail or bring it to: Photo Department, Lancaster Farming, 22 E. Main St., Litzitz, Pa. 17543

The photo I want appeared in the Lancaster Farming dated _____, and the caption begins:

I would like to order the following prints:

Number of prints	Size each	Cost of each	Total
_____	4x5	\$1.50	_____
_____	5x7	2.00	_____
_____	8x10	2.50	_____

Total order (Please add 6 pct Pa Sales Tax)

Please send remittance with order. Allow 10 days for delivery.

Name _____
 Street _____
 Town _____
 State _____ Zip _____



OF FLOWERS AND HOURS

Though the flowers of Edinburgh's famous floral clock don't actually bloom in the spring, you could, according to the Teacher's Scotch Information Centre, write an operetta about this timepiece and call it *Blossom Time*.

The idea of having some sort of floral display on the sloping ground at the entrance to West Princes Street Gardens



was first thought of in 1902, the year of King Edward's coronation. The site of the present floral clock was then laid out with flowers in the shape of a crown.

The following year the Superintendent of Parks got the idea of using the site for a floral clock from the great exhibition in St. Louis, where such a clock was on display. In 1904, Edinburgh's first floral clock was laid out on its present site.

At first, it only had one hand, but the following year it appeared as a complete clock with cuckoo chime, and has operated as such each summer ever since.

The clock is 38 feet in circumference, 11 feet 10 inches

in depth; the minute hand is 99 inches long and the hour hand 66 inches in length. When filled with plants the large hand weighs about 80 pounds and the small one about 50 pounds.

Each year a special design is drawn up by the Superintendent of Parks and plants are potted for the purpose of providing the contrasting colors which are always effectively incorporated in the

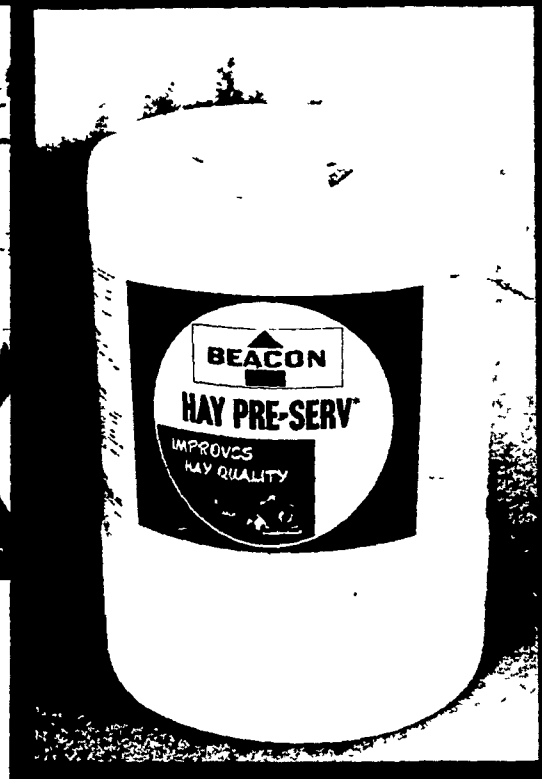
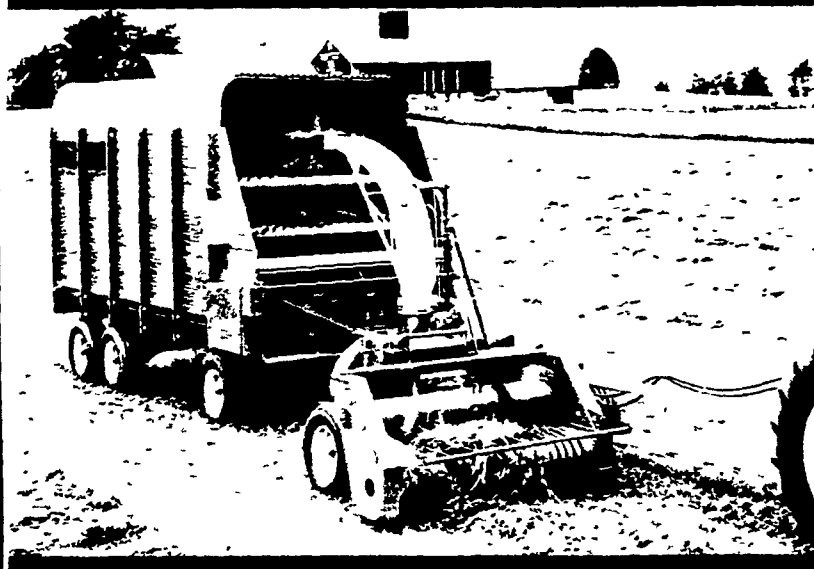
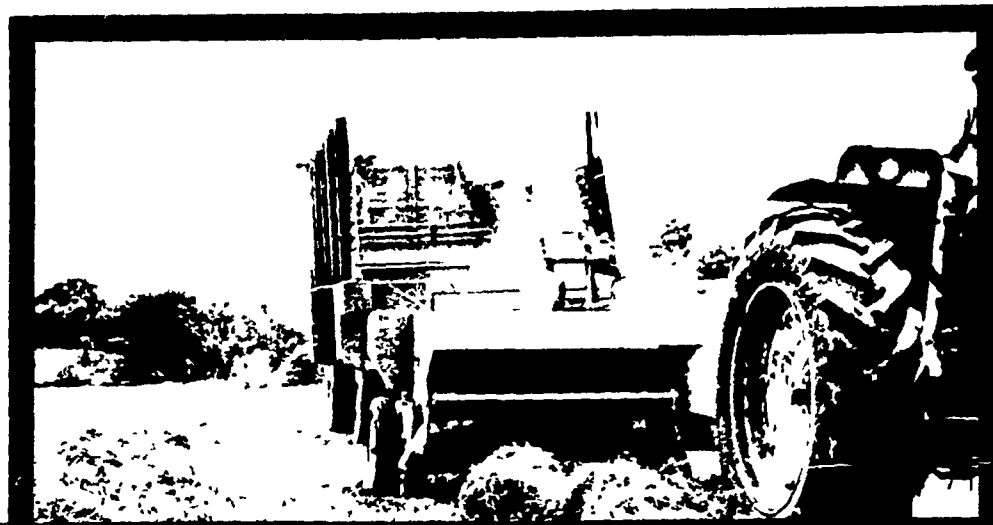
layout. To plant the whole area takes three men three weeks of constant work. Approximately 14,000 plants are put into the floral clock, which, every year, "grows on" more and more visitors to Scotland.

TRY A CLASSIFIED AD



Hay Pre-Serv

Harvest more hay per acre...more digestible nutrients per ton.



Hay Pre-Serv helps retain the nutrition, palatability and just-cut coloration of hay. It increases the digestible nutrients. You can safely store hay up to 25 percent moisture without worry. Hay Pre-Serv costs little to use, and achieves the results you've wanted.



WILL SPRAY PAINT YOUR BARN & SHEDS with Bruning Country Squire

INTRODUCTORY OFFER
 \$6.50 per gal. if you help.

\$7.50 per gal. if we use boom truck.

PAINT & AIRLESS EQUIPMENT AT MOST REASONABLE RATES.

Phone (AC) 215-445-6186

PHARES HURST
 RD1 Narvon, Pa. 17555

BELT™ 33G

Basic soil insecticide of the '70's

Improved granules guaranteed* to flow freely

Belt controls a wide range of soil insects that attack corn . . . cutworms, wireworms, white grubs, seed corn maggots, many others

Velsicol guarantees that the new formulation Belt granules flow freely through your applicator, and we have details of that guarantee

Belt, from Velsicol, is chlordane at its best, for economical, broad-spectrum control. Make Belt part of your corn-pest control program. Order today.

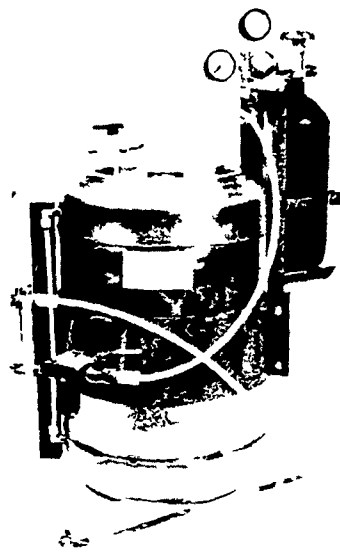
*Ask us for details and guarantee registration card



P. L. ROHRER & BRO., INC.

Smoketown, Pa. 397-3539

Stainless Steel Liquid Applicator.



Beacon's S S Liquid Applicator is pressure operated and accurately dispenses Beacon Hay Pre-Serv in the form of a spray. The applicator is easily mounted on all types of haying equipment. Unit can also be used to treat silage. With minor modification, unit may be used for treating high moisture (25%) grain.

ADVANTAGES

- Stainless steel reservoir
- Easily mounted or installed
- Powered by compressed CO₂ gas or 12 volt air compressor
- Built-in safety features
- Maintenance at a minimum
- Holds 120 lbs of chemicals
- One year warranty on reservoir
- One year warranty on compressor and balance of applicator
- Liquid level gauge
- All parts chemically resistant
- One tank of CO₂ dispenses 300 to 500 lbs of chemical under average conditions
- Pressure regulator can be permanently set
- Pressure gauge indicates amount of CO₂ in pressure bottle
- Flow meter to observe flow of chemical
- Liquid filter
- Nozzle assembly available

H. JACOB HOOBER
 INTERCOURSE, PA.

RHOADS MILL, INC.
 Selinsgrove, Pa.

EARL SAUDER, INC.
 NEW HOLLAND, PA.

H. M. STAUFFER & SONS, INC.
 LEOLA, PA.

O. KENNETH McCracken & SON
 MANHEIM, PA.

Beacon Reps.

Ted Belefski
 Ph. 523-9173

Chester Weist
 Ph. 741-2600

R. E. Rudisill
 Ph. 854-2281

Beacon Feeds, York, Pa. Phone 717-843-9033