

Union Bosses Will Try To 'Buy' Legislators, Right to Work Unit Says

The March newsletter of Pennsylvania's Right to Work stated that labor union officials, are waging an "all-out campaign to buy Congress and state legislators whose members themselves a veto-proof legislature."

are eager to do their bidding."

"If they succeed in November," the publication asserted, "union bosses will attempt to spread their monopoly power through legislative mandates for compulsory unionism in both public and private employment sectors."

It said union bosses will push in the U. S. Congress for repeal of Section 14 (b) of the Taft-Hartley Act, the provisions which permit states to enact laws guaranteeing their citizens the right to get and hold jobs regardless of union membership or non-membership.

It said that in the state legislature, a "union boss-dominated majority" could stifle public appeals for a state Right to Work law and for legislation prohibiting the use of compulsory union dues for political purposes. It said such a majority could also repeal the "right to refrain" provision in Public Employee Relations Act 195.

Union bosses will be

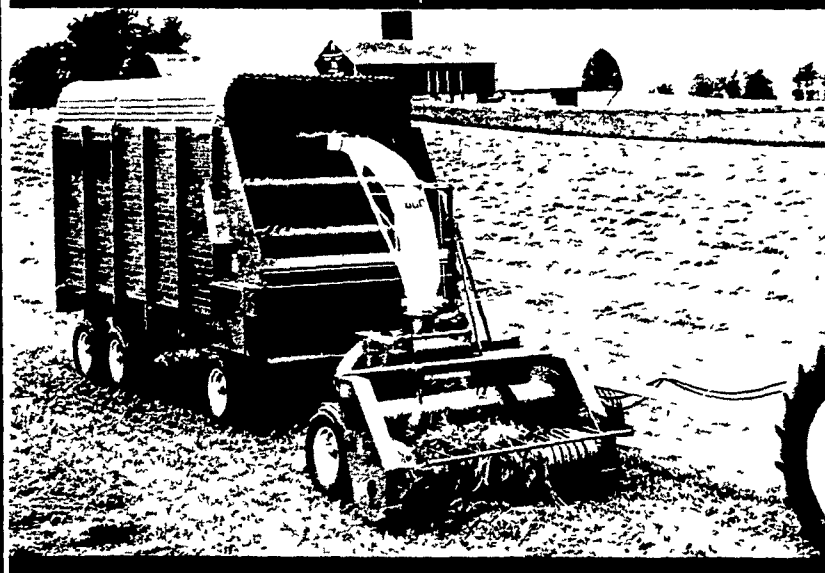
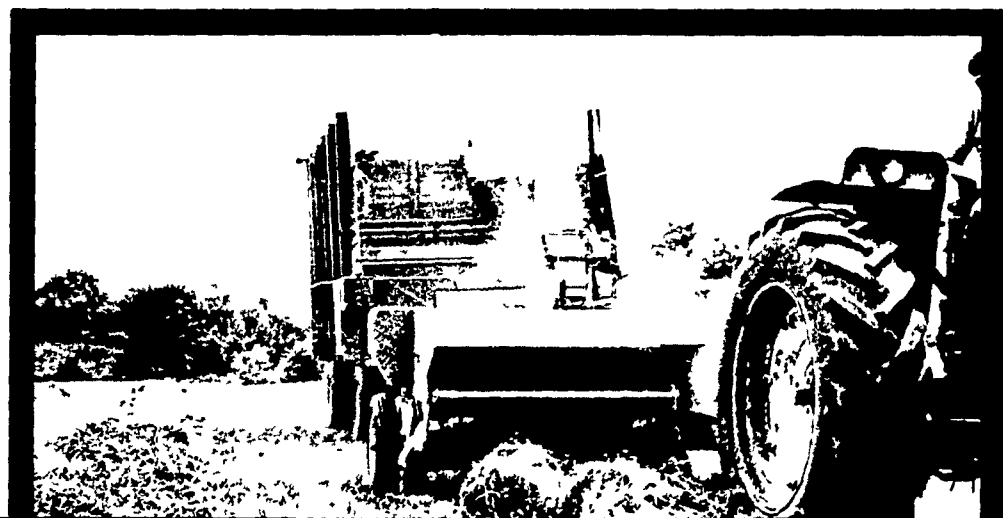
"flexing their muscles" in virtually every race for state and national office this year, the newsletter stated. It said that part of the payment exacted for this aid, much of which it claimed is financed by compulsory union dues, will be candidates' pledges to support efforts to extend what the newsletter called the "stranglehold of compulsory unionism."

It said that Pennsylvanians for Right to Work plans to send a questionnaire to every successful State Legislature candidate after the May 21 primary, asking his or her views on the individual wage earner's right to get and hold a job without joining a union. The questionnaire also asks the candidate's position on legislation banning the use of compulsory union dues for political purposes which the individual union member may oppose, and on the "right to refrain" protection afforded public employees under Act 195.



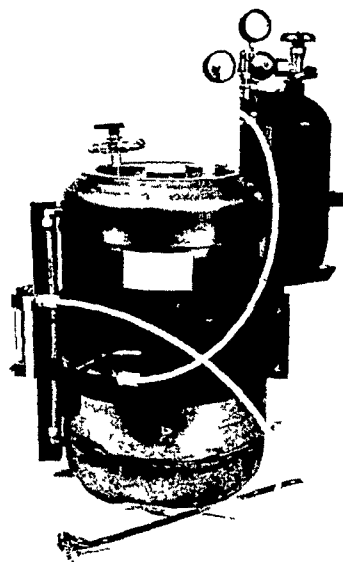
Hay Pre-Serv

Harvest more hay per acre...more digestible nutrients per ton.



Hay Pre-Serv helps retain the nutrition, palatability and just-cut coloration of hay. It increases the digestible nutrients. You can safely store hay up to 25 percent moisture without worry. Hay Pre-Serv costs little to use, and achieves the results you've wanted.

Stainless Steel Liquid Applicator.



Beacon's S S Liquid Applicator is pressure operated and accurately dispenses Beacon Hay Pre-Serv in the form of a spray. The applicator is easily mounted on all types of haying equipment. Unit can also be used to treat silage. With minor modification, unit may be used for treating high moisture (25%) grain.

ADVANTAGES

- Stainless steel reservoir
- Easily mounted or installed
- Powered by compressed CO₂ gas or 12 volt air compressor
- Built-in safety features
- Maintenance at a minimum
- Holds 120 lbs of chemicals
- One year warranty on reservoir
- One year warranty on compressor and balance of applicator
- Liquid level gauge
- All parts chemically resistant
- One tank of CO₂ dispenses 300 to 500 lbs of chemical under average conditions
- Pressure regulator can be permanently set
- Pressure gauge indicates amount of CO₂ in pressure bottle
- Flow meter to observe flow of chemical
- Liquid filter
- Nozzle assembly available

H. JACOB HOOPER
INTERCOURSE, PA.

RHOADS MILL, INC.
Selinsgrove, Pa.

EARL SAUDER, INC.
NEW HOLLAND, PA.

H. M. STAUFFER & SONS, INC.
LEOLA, PA.

O. KENNETH McCracken & SON
MANHEIM, PA.

Beacon Reps.

Ted Belefski
Ph. 523-9173

Chester Weist
Ph. 741-2600

R. E. Rudisill
Ph. 854-2281

Beacon Feeds, York, Pa. Phone 717-843-9033



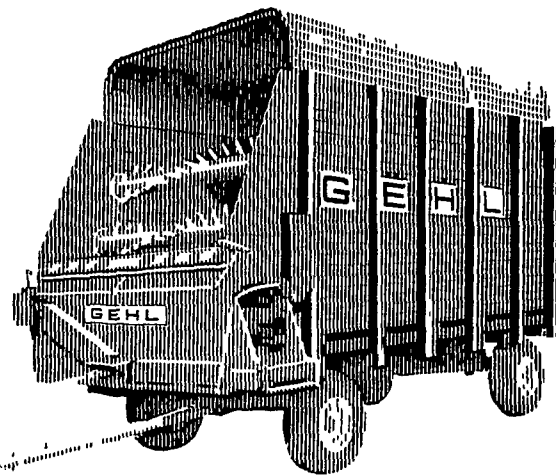
Some people still say that to carry a red onion in the left hand or left pocket, wards off disease

TRY A CLASSIFIED AD
PHONE 626-2191 or 394-3047

SMOOTH

With worm gear drive and pintle-chain and slat cross conveyor, this Gehl box unloads your toughest crops smoothly, increasing blower capacity. There's a safety bar across the entire box front and above the discharge opening. It stops the action instantly! Stop in. We can tell you how you can get a Gehl BU910 box into your harvesting system this year! See us this week!

Smooth unloading
WORM-GEAR DRIVE
...safety bar, too!



GEHL®

Gets into your system

N. G. HERSHEY & SON
Manheim

FARMERSVILLE
EQUIPMENT INC.
R.D. 2, Ephrata, Pa.

CHAS J. McCOMSEY
& SONS
Hickory Hill, Pa.

ZOOK'S FARM STORE
Honey Brook, Pa.

A.L. HERR & BRO.
Quarryville

NISSLEY FARM SERVICE
Washington Boro