

TRY A CLASSIFIED AD
PHONE 626-2191 or 394-3047

**INCREASE YIELDS
\$15.00 AN ACRE
FOR 25¢**



ORTHO ISOTOX® Seed Treater (F) is backed by the best kind of proof a corn seed-treater could have: over one hundred million successful corn acres. All kinds of climate. All types of soil. All sorts of men doing the planting. Yield increases run up to fifteen dollars an acre — from a product that costs about 25 cents to treat a 20,000 plant-population-acre.

CHEVRON CHEMICAL COMPANY ORTHO DIVISION
San Francisco, CA 94120
Helping the World Grow Better®
TMS ORTHO CHEVRON DESIGN HELPING THE WORLD GROW
BETTER ISOTOX — REG U S PAT OFF ON ALL CHEMICALS READ
CAUTIONS, WARNINGS AND DIRECTIONS BEFORE USE

P. L. ROHRER & BRO., INC.

Smoketown, Pa. Ph. 397-3539

Land Use

(Continued from Page 1)

and Dr. J. Henry Long, the Elizabethtown professors at Tuesday night's meeting, both spoke of the horrors of the gigantic urban sprawl that is spreading constantly from Maine to Richmond, Va.

Amos Funk, a vegetable grower from Millersville, told the group that he sees farmland disappearing in the county at an alarming rate. "We're losing 8000 acres a year," he said. "In another fifty years, at that rate, we'll only have fifty small farms left in the county." Funk pointed out that much of the farmland in the county is already owned by developers or land speculators.

"There are 12 farms in my area, and eight of them are owned by developers. It won't be long until they're gone."

John Ahlfield, of the Lancaster County Planning Commission, told the group on Tuesday that the county still had a lot of open space left, but that the planning commission was trying to see that future development proceeded in a logical way. He said ten years ago there was very little planning going on in the county, but today nearly all the 67 municipalities have planning commissions and zoning ordinances. Ahlfield said the planning commission expects the county's population

TB & Health Society Announces Programs

Mrs. Nellie Blake, Program Director of the Lancaster County Lung Association, announces the screening programs for April 1974.

The regular monthly program will be held at the Association office, 630 Janet Avenue, Lancaster, Pennsylvania, Tuesday, April 2, 1974 from 10 a.m. to 12 noon, 1 to 5 p.m. and 6:30 to 8 p.m. Chest x-ray, tuberculin testing and diabetes screening will be offered at this program. Anyone having the tuberculin test will be asked to return Thursday, April 4 for results.

Wednesday, April 3, 1974, the chest x-ray, tuberculin testing and diabetes screening will be held in New Holland, Pennsylvania. The location will be 101 East

Main Street from 10 a.m. to 12 noon, 1 to 5 and 6:30 to 8 p.m. Those persons having the tuberculin test will return Friday, April 5 for results.

We continue to recommend the chest x-ray only for persons over 40 years of age. The price of the chest x-ray is \$2.00, the tuberculin test \$1.00. The diabetes test is free of charge and will be more accurate if taken two hours after eating a normal meal.

Meaty Breakfast Bonus

For variety and flavor appeal, add chopped cooked meat to scrambled eggs as they begin to thicken. Bacon, sausage, ham, luncheon meat, frankfurters or dried beef are appropriate additions.

Yoder Herd Production

Milk and butterfat production levels established by Registered Holstein cows in this area have been reported by Holstein-Friesian Association of America. All cows are from the herd of Jefferson D. Yoder, Elverson RD1, enrolled in the Dairy Herd Improvement Registry (DHIR) official testing program.

Cows recognized for their exceptional food producing ability are:

Rocky-Side Fancy, age 7-7, 21,780 pounds milk, 974 pounds fat, 4.5 percent test in 305 days milked.

Rocky-Side Star June, 5-8, 22,280 pounds milk, 816 pounds fat, 3.7 percent test in 326 days milked; 21,650 pounds milk, 795 pounds fat, 3.7 percent test in 305 days.

HOG PRODUCERS!

Get Top Price for
Your Hogs at
New Holland



Sold in sorted lots the auction way. See them weighed and sold and pick up your check

SAVE EVERY MONDAY 10:00 A.M.

NEW HOLLAND SALES STABLES, INC.

Phone 717-354-4341

Abe Diffenbach, Manager



**GEARED
TO GO...**

ALLIS-CHALMERS 7030 & 7050

The power trains in the new Allis-Chalmers 7030 and 7050 tractors have the strength to take the torque and strain of big power farming . . . season after season. From their multi-disc clutch, right on through the 20-speed transmission and planetary final drives to the 3 62-inch diameter rear axles, these power trains measure up to the demands of big loads and long days.

Each component—like the planetary drive shown above—is rugged, durable and reliable. That's why you get a 24-month factory warranty on the power train components. Compare that to the 12-month warranty on many other tractors.

See us now about a Measurably Better 130 horsepower* 7030, or 156 horsepower* 7050—the tractors that are geared to go.

*Maximum observed PTO horsepower at 2300 rpm

Nissley Farm Service
Washington Boro. Pa.

L. H. Brubaker
Lancaster. Pa.

Roy H. Buch, Inc.
Ephrata R D 2

Grumelli Farm Service
Quarryville. Pa.



BHM Farm Equipment, Inc.
Annville. R D 1, Pa.

We're gonna open your eyes!

4 REASONS FOR USING H1928 NOR-LENE ALSTAR PILOT



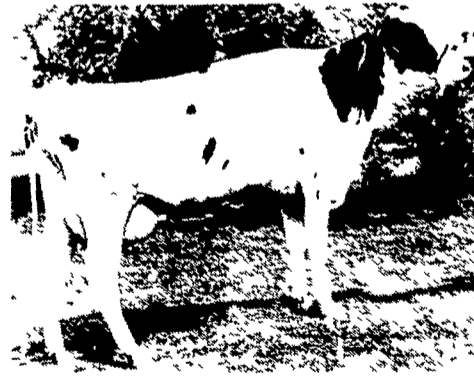
Nor-Lene Alstar Flossie - Dtr of 1928 PILOT -
2y 3m 365d 2x 23,340M 3 6% 842BF



Nor-Lene Heilo Alstar - Dtr of 1928 PILOT --
2y 4m 363d 2x 23 259M 4 8% 1111BF
3y 5m 305d 2x 20 585M 5 2% 1067BF



Nor-Lene Alstar Ethel - Dtr of 1928 PILOT
2y 2m 365d 2x 25,546M 4 4% 1113BF



Nor-Lene Grace Alstar - Dtr of 1928 PILOT --
2y 1m 332d 2x 20 755M 4 6% 948BF

No. 5
USDA 1/74

37D 67R 7H 19 025 4 02 764
Herdmates Ave 17 170 3 69 633
Diff +1855 +33 +131
Rpt 34%
EDS or PD +\$69 +715 +15 +48

Call your local ABS Representative today
for information or service.



JAMES CHARLES
Landisville
717 898 8694

PAUL MARTIN
Richland
717 866 4228

MAURICE STUMP
West Grove
215-869 9187

ERNEST WAGNER
Annville
717 867 1086

PAUL HERR
Holtwood
717 284 4592

MERTON STROBLE
Elverson
215 286 9173

DON TAYLOR
Oxford
215 932 4942