

TRY A CLASSIFIED AD  
PHONE 626-2191 or 394-3047

## CONSIGNMENT SALE WEDNESDAY, MARCH 20, 9:30 A.M.

Location: 1/2 mile north of Route 23 on North Maple Ave. in Leola, Lancaster Co. Pa.

Tractors, Farm Machinery, Horse Drawn Implements, New Tools, Lumber, etc., etc. We have buyers for hay and straw.

We sell on Commission.

**DAVID H. GOOD**  
717-656-9024

F. Snyder, R. Martin, C. Wolgemuth, Auct.  
Next Sale Wed., April 3

NOT RESPONSIBLE FOR ACCIDENTS

## PUBLIC SALE OF HORSES, MULES, BROOD SOWS AND HORSE-DRAWN FARM MACHINERY

THURSDAY, MARCH 21, 1974

AT 10:00 A.M.

Located along Wissler Road, 1/4 mile north of Voganville, Earl Township, Lancaster County, Pa. Directions from Hinkletown - Turn south off Route 322 onto Farmersville Road to Wissler Road, turn left, first farm on left



**PR. GRAY HORSE MULES**  
Coming 3 yrs. old, standing 16.1,  
were worked last Summer.  
**PAIR BAY MARE MULES**  
Coming 6 and 7 yrs. old.  
Will make a handy team.

**1 PAIR SORREL HORSE MULES**, Near Side Mule, 13 years old, very dependable, Off-side Mule, Light Sorrel, 10 years old, very good worker This team real good pullers. **1 NEAR SIDE DARK HORSE MULE**, 7 years old, big, **1 OFF-SIDE BAY MULE**, 11 years old, good work mules

**1 STANDARD BRED CARRIAGE HORSE**, 10 years old, good driver, **1 GENERAL PURPOSE HORSE**, works single and real good double

**TWO COWS**

**ONE FRESH 10 WEEKS,**

**1 FRESH BY DAY OF SALE**

**20 BRED SOWS**, some with litters

**40 HEAD FEEDER PIGS**, 40 to 70 lbs.

**FARM MACHINERY**

**FRICK 22-INCH THRESHING MACHINE** (like new), John Deere Baler 14-T, good condition, 2 Grove Wagons, 1 wide track, 17 Ft. Flats (like new), one 16-Ft with corn sides, John Deere K.B.A. 20 Disc, John Deere 3-Section Spring Harrow (both good shape), 2 John Deere Grain Binders, 8-Ft., 2 John Deere Big 4 Grass Mowers, 6-Ft Bars, John Deere Manure Spreader, 2 John Deere Cultivators, McCormick Deering Corn Binder with short carrier and wagon loader, New Wagon Loader; Papec 16-In Silo Filler and Pipe, some new, New Idea Hay Loader; Ontario 13 Disc Grain Drill (good), Brillion 9 Ft. Sprocket Packer; McCormick 10-Ft Fertilizer Drill (good), 3 McCormick Deering Cultivators; McCormick 10C Hammermill, Ford Power Unit 4-Cylinder Industrial, John Deere Rotary Hoe, 3-Section, Roller, 9 Ft., John Deere Corn Planter 999, also one for parts

Mechanical Transplanter, Oliver 2-Way Sulky Plow, 2 Single Oliver Sulky Plows with trip bottom; 106 Wizard Plow, Oliver Radex Walking Plow, Fore Cart, Spike Harrow, Wagon with Corn Sides, 2-Horse Spring Wagon with Rack, Heavy Spring Wagon with Rack; McCormick Deering Side Rake, 2-Horse Sleigh, Hack Carriage, Approximately 15 Ton Ear Corn, Brooder House with Lean to feeding area attached, used for farrowing crates, Smidley Steer Feeder, 3-ton, Smidley Hog Feeders, 12 hole, 6-hole, 4-hole, 2 Pride of the Farm 80-gallon Hog Waterers, Hog Troughs, Heavy Duty Block and Tackle, Chain Hoist, 1/2 ton, Wood Saw on wheels, Two 9-Ft Water Troughs, Handyman Jack, New Hay Rope; Hay Hook; Rope and Pulleys, Binder Canvass (some new), 2 Bales Baler Twine, 4 Sets Britching Harness, Other Harnesses; Good Selection of Collars, Bridles, Halters, Check Lines, Jockey Poles; New Carriage Harness

Ground Scoop, 4 Bags Starter Fertilizer 8-32-16, 1,000 Tobacco Laths, Minnich Bale Box, Tobacco Shears, Water Tank, Stewart Clipper, 100-Ft and 75-Ft 7-Inch Endless Belts, 40-Ft., 36-Ft and 22-Ft 6-Inch Endless Belts, Belt Lacer and Cutter on stand, Forks, Shovels, Log Chains, Silage Cart and Fork, Hypro Water Pump with 3-Horsepower Engine, Single, Double and Triple Trees, 4, 5, 6 Horse Hitches, Yokes, Scrap Iron, Cast Iron, Wire Fence and Posts, 12-Ft., 14-Ft., 16-Ft Gates, 40-Ft Aluminum Ladder, Scalding Trough, 16-In Papec Knives (some new), Silage Distributor, New Radex Plow Parts, Shears, Shins and Heels, Wood and Steel Tongs, Barn Broom, Hedge Trimmers, 7/4-HP Briggs and Stratton Engine, 12-Volt Battery, High Pressure Hose, Other Hose, Stainless Steel Knapsack Sprayer, 60-Gal Gas Tanks with Pumps, Grease Guns and Grease, Platform Scales, Gandy Applicator, Cyclone Clover Seeders, Wheelbarrow, and many other items too numerous to mention

A FEW HOUSEHOLD ITEMS

Terms by

**WEAVER S. AUKER**

**LEROY S. HORST and PAUL W. HORST, Auctioneers**

Refreshments will be Served.  
Not Responsible for Accidents

## Dry Cow Meet At Garden Spot

Garden Spot Young Farmers will sponsor a meeting, March 12, 7:45 p.m. at the High School ag room. The topic to be discussed is Dry Cow Management.

Speakers will be Mr. Gerald Hess, nutritionist, and Dr. Melvyn Wenger, veterinarian.

Areas to be emphasized at the meeting are needs for proper protein energy, mineral balance during the dry period, common mistakes and misconceptions and dry cow mastitis treatment and medications.

Proper dry cow management is one of the most neglected areas of dairy herd management. This study will center on exposing this neglect and establishing management practices that will work toward improving this critical management period.

All area dairymen are invited to attend, refreshments will be served.

Fertilizer increases yields but has little effect on the protein and vitamin content of food plants, according to scientists with the Agricultural Experiment Station at The Pennsylvania State University. Protein content is controlled by genes while vitamin content is influenced by both genes and environment, declared Drs. R. M. Leach, E. L. Bergman, and D. E. Baker of the Penn State faculty.

They said many years of worldwide efforts to alter the protein and vitamin content of plants through fertilization have been relatively unsuccessful. Their comments are featured in a special foods issue of "Science in Agriculture," the quarterly magazine of the Agricultural Experiment Station.

The forage grasses, they noted, are one exception to the concept that genes

control protein content. Such grasses respond to nitrogen fertilization with some increase in protein.

Variation in plant mineral content can be reflected in a number of health problems affecting human beings and animals. Included among such health conditions are iodine deficiency or goiter, cobalt deficiency, magnesium deficiency or grass tetany, selenium deficiency, selenium toxicity, and molybdenum toxicity.

The special issue of "Science of Agriculture" contains 14 articles featuring developments in food science. Copies are available free from the Agricultural Mailing Room, 112 Agricultural Administration Building, University Park, Pa. 16802. Ask for the foods issue of "Science in Agriculture."

In their report, Dr. Leach and associates mentioned widespread public interest in organic plant production. They observed, however, that plants usually take up essential nutrients as inorganic forms. Thus, if soil nutrients are applied in organic form, the nutrients must first be converted to inorganic form in the soil before being absorbed by plants.

This means that plants produced on organically-fertilized soils are not necessarily of higher nutritional quality than plants grown with the use of inorganic fertilizers.

This does not suggest that organic material is of no value, the Penn Staters commented. Organic fertilizers improve soil characteristics such as water-

holding capacity, tillability, and rain absorption capacity. Applying waste materials to the soil provides a means of recycling wastes to improve environmental quality.

Several projects are underway at Penn State to study the effects of applying waste materials to the soil. In one study, the effect of repeated application of sewage sludge upon plant composition and animal health is being investigated. The results will lead to a better understanding of the transfer of mineral elements from the soil through plants in the food chain of animals and man.

A second project, related to wastes as applied to soil, involves the development of a new soil testing procedure. This new procedure will determine how much of each element is available for uptake by the plant. From such a soil test it would be possible to predict the potential for altering plant composition and subsequent human and animal health when applying waste materials to the soil.

A third project relates to the effect of dried poultry manure on vegetable production, with and without additional application of various essential elements as inorganic fertilizers. Results after two years of studies have shown that best yield was gained when additional phosphorus, potassium, and magnesium were added to the soil. Of course each crop has specific nutrient requirements and plant nutrient application should be based on the results of soil tests.

## PUBLIC SALE OF FARM MACHINERY

Location: 3 miles West of Millersville toward Leort. Intersection of Owl Bridge and Stehmans Church Road. Watch for signs at Stehmans Church.

WED., MARCH 20, 1974

12 noon

John Deere 1010 crawler with front end loader (good), Farmall C with 2 row cults. & tobacco hoers, IHC 531 3 bottom plow (trip), Massey Harris 28 disc transport, 10 ft. tool bar 3 pt., IHC #76 pickup baler, New Idea 40 ft. elevator with motor, Farmhand wheel rake, IHC 7 ft. semi mower, 13 disc Ontario grain drill, IHC 2 row trailer cornplanter, IHC #175 2 beater spreader, Massey Harris 80 special Combine 12 ft. header with bin and power steering, 2 grain bins 1 McCurdy and 1 Easy Flow.

**Dinner Bell**

2 IHC wagons with flat beds, 1 double tobacco ladders on flat wagon, 6700 tobacco lath, Minnich press, shears, spears, single tobacco ladders, old wagon, sawbuck fits IHC, 3 bottom plow rake, peg tooth harrow, field sprayer with drop nozzles, J.D. fert. spinner ground driven.

3 rolls hog wire, roll barb wire, 2 endless belts, seed cleaner, seeder, platform scales, 500 gal water tank, 5 metal farrowing crates, 2 metal hog feeders 1 large, 2 other metal feeders, 2 hydraulic cylinders, 7 rolls snow fence, acetylene torch.

5 water cans, chains, cable, tractor chains and other articles not mentioned.

1960 Chevrolet 1/4 ton pickup, 4 wheel drive

1946 Studebaker farm dump truck, inspected

1 truck hoist single cylinder

Terms by,

**EDGAR PORTER**

Kreider & Diller, Aucts.

Lunch by Friendship Circle

## PENNSYLVANIA LANDRACE ASSOCIATION STATE SHOW and SALE

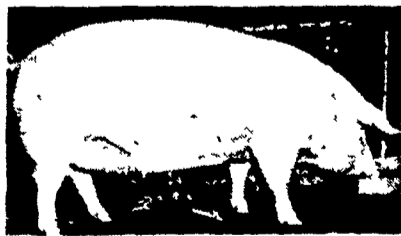
SATURDAY, MARCH 30, 1974

SHOW 10:00 A.M.

SALE 1:00 P.M.

Location: Pennsylvania Farm Show Building  
Harrisburg, Pennsylvania

**- 50 HEAD -**



Landrace, the Great White Breed

LANDRACE TRADE MARKS

**Bred Gilts — Open Gilts — Boars**

The original lean meat breed.  
The world's best mothers.  
More capacity to produce.  
An asset to any herd.

FOR CATALOGS WRITE TO:

Jay D. Blatt, Secretary  
Pennsylvania Landrace Association  
RD2, Annville, Pa. 17003  
Phone 717-865-4842

OR  
Harold Mummert, President  
RD1, Seven Valleys, Pa. 17360  
Phone 717-367-5454

## Development School Planned For Community Leaders

About 110 grass roots community leaders from 13 states and Puerto Rico gathered at the Kanuga Conference Center near Hendersonville, N. C., Sunday, Mar. 3 for the second National Rural Development Leaders School.


Among highlights of the session, coordinated by USDA's Rural Development Service (RDS), were speeches by U. S. congressmen and Agriculture Department

officials. Purpose of the school is to teach community leaders how to be more effective in their rural development work. The course is an intensive program of lectures, discussions, and group assignments of practical decisionmaking based on community development problems.

The students represented rural communities in Alabama, Arkansas, Florida, Georgia, Kentucky, Louisiana, Mississippi, North Carolina, Oklahoma, South Carolina, Tennessee, Texas, Virginia, and Puerto Rico.

Faculty members for the school were from government, industry, business, education, and public interest groups.

Subsequent offerings of the school, to be held in different regions of the country, are being planned. These sessions will be announced as programs for them are developed.

**FOR SALE**  
TENN. MULES   
**OMAR F. STOLTZFUS**  
2442 Creek Hill Rd  
Lancaster Penna