

Inter-State District 7 Holds Annual Meet

District 7 of the Inter-State Milk Producers Cooperative held its annual dinner meeting on Thursday at Hostetter's Dining Hall in Mount Joy. Guest speaker was Dr. James E. Honan, Inter-State's secretary and general manager.

Honan told the group that the marketing situation for milk is going through a period of upheaval, and that there are many groups vying for the dairymen's output. Honan explained the Inter-State marketing philosophy, saying that this cooperative was aiming for high Class One utilization, and extension of Federal Milk Marketing Order 4, and noting that their base program has produced one of the levellest milk production markets in the country.

Daniel Martin, an Inter-State director from Manheim, explained the value of advertising to the group, and scored a recent article in Consumer Reports which said that milk was an overpriced food low in nutritive value.

County agent Max Smith also talked to the group about gasoline and fertilizer shortages. He said the fertilizer value of manure was never so important as it is today with high prices and shortages, and he advised farmers to manage their animal wastes carefully. Smith also invited the group to a meeting on farmland assessment scheduled for 7:30 p.m., Wednesday, March 13, at the Farm and Home Center.

During the meeting, 25-year membership awards were presented to three members. John Thomas, Jr., Millersville RD1, was present to receive his award. Not present but receiving awards were H. Landis Huber, Lititz RD2, and Harold Barley, Millersville RD1.

Officers and delegates of the five District 7 locals were also selected during the meeting. Elected from each local were:

Donegal Local - President, John M. Gingrich, Mt. Joy RD2; vice-president, Galen N. Benner, Mt. Joy RD1;



Inter-State director Daniel Martin, Manheim, was one of the speakers at the annual meeting of District 7, held Thursday in Mt. Joy.

secretary-treasurer, John S. Wenger, Manheim RD2; delegates, Luke F. Brubaker, Mt. Joy RD1; Daniel S. Stoltzfus, Mt. Joy RD1, and W. Robert Shellenberger, Manheim RD2.

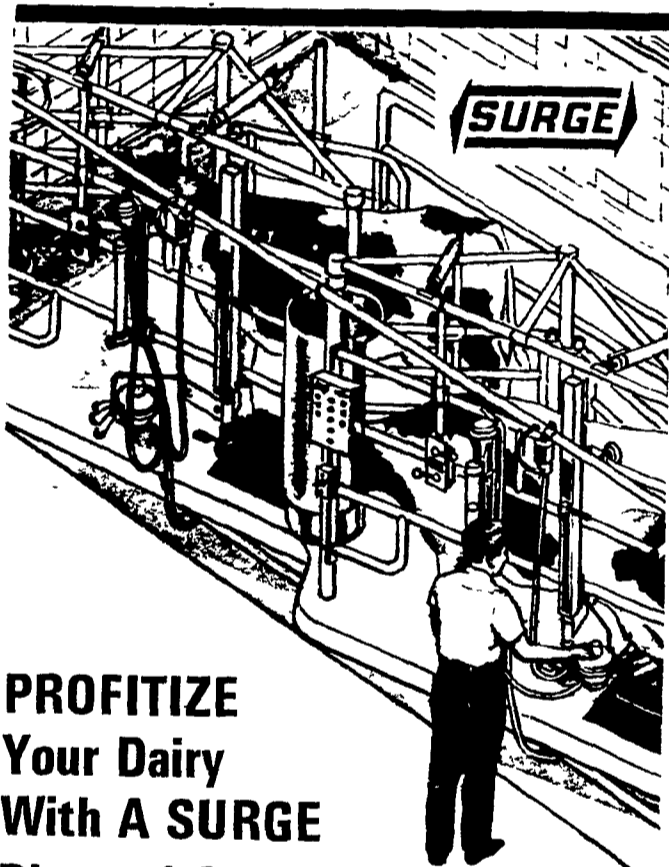
Lititz Local - President, Ray P. Bollinger, Stevens RD1; vice-president, Marvin K. Witmer, 420 Clay Road, Lititz; secretary-treasurer, Nelson E. Martin, Ephrata RD1; delegates, Earl C. Stauffer, Ephrata RD1; Galen W. Crouse, Stevens RD1.

Lebanon County Local - President, Maurice Benetch, Newmanstown RD1; vice-president, Krall Hostetter, Lebanon RD1; secretary-treasurer, John H. Hartman, Newmanstown RD1; delegates, A. Ralph McCrone, Newmanstown RD1; Arthur E. Brandt, Newmanstown RD1.

Millersville Local - President, Nelson R. Habecker, Lancaster RD2; vice-president, Earl E. Huber, Conestoga RD1; secretary-treasurer, Kenneth Shertzer, Millersville RD1; delegates, Glenn E. Burkholder, Washington Boro RD1; Melvin Shertzer, Millersville RD1.

West Lampeter Local - President, Arthur L. Breneman, Willow Street RD1; vice-president, James D. Shertzer, 1518 Millport

Rd., Lancaster; secretary-treasurer, Jacob R. Houser, Jr., 1520 Lampeter Rd., Lampeter; delegates, Harlan N. Keener, 1265 Gypsy Hill Rd., Lancaster; John M. Harnish, 1036 Beaver Valley Pike, Lancaster.



**PROFITIZE
Your Dairy
With A SURGE
Diagonal Stall System**

WE ARE TAKING
ORDERS FOR

**PIPELINES &
PARLORS**

Will You Be Next?

**SURGE...the accent is
on YOU**

LESTER B. BOLL GROFF EQUIPMENT
RD1, Lititz, Pa
Ph 717-626-6198
2 W State St
Quarryville, Pa
Ph. 717-786-7225

**BRANDT'S FARM
SUPPLY INC.** **GLENN E. HURST**
601 East High St
Elizabethtown, Pa
Ph 717-367-1221
RD2, East Earl, Pa
Ph. 215-445-6865

Pa. Broiler Placements Rise 14 pct.

Placements of broiler chicks in the Commonwealth during the week ending February 23, 1974 were 1,389,000. The placements were 14 percent above the corresponding week a year earlier, and 24 percent above the previous week. Average placements during the past 10 weeks were 5 percent above a year earlier.

Settings for broiler chicks were 1,774,000 - 11 percent below the previous week and 13 percent below the comparable period a year earlier. The current 3-week total of eggs set is 7 percent below the same period a year ago.

Inshipments of broiler-type chicks during the past 10 weeks averaged 2,000 compared with 6,000 a year ago. Outshipments averaged 244,000 during the past 10 weeks, 5 percent above a year earlier.

Placements in the 21 States were 61,660,000 - 5 percent above the previous week and 9 percent above the

same week a year earlier. Average placements during the past 10 weeks were 5 percent above a year ago.

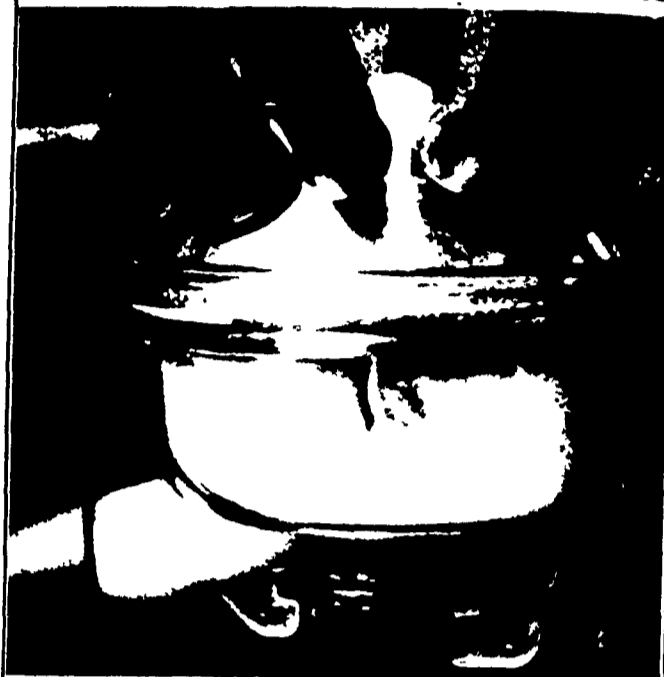
Settings were 77,401,000 - approximately the same as the previous week but 2 percent above a year earlier.

The current 3-week total of eggs set is 3 percent above the comparable period a year ago.

Laundry Planning
A laundry area should be planned to include space for collecting and sorting clothes, washing them by hand and machine washing and drying. Space for ironing, folding and hanging clothes is useful, too.

**TRY A
CLASSIFIED
AD**

**De Laval's
New FLO-VU CLAW
Shows You How Well it Milks**



- ONE HAND OPERATION
- AUTOMATIC SHUT-OFF
- AIR VALVE METERS AIR

You can see how well it cleans, too. It's durable - self-draining design - prevents contamination

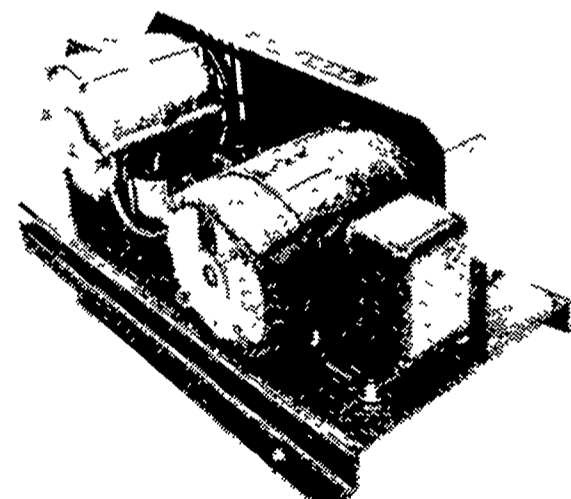


**DE LAVAL STERLING
OR
MAGNETIC PULSATOR** Easy-to-handle pails

Here's a brand new pulsator that brings you dependable pulsation, hour after hour, day after day, for years and years. There are no adjustments to make. Not affected by heat or cold or humidity. Rugged and corrosion-resistant.

DeLAVAL VACUUM PUMPS

**No. 74 - 16.8 C.F.M.
No. 76 - 34 C.F.M.**



**WE INSTALL PIPELINES
& PARLORS**

CALL US FOR FREE ESTIMATE

J. B. ZIMMERMAN & SONS

SALES & SERVICE

Blue Ball, Pa

CALL 354-7481

**TRY A CLASSIFIED AD
PHONE
626-2191 or 394-3047**

WHILE AT DAIRY DAYS

Stop By and Get Full
Information on NURS-ETTE

**AUTOMATIC
CALF FEEDER**

AND INFORMATION ON OUR

QUALITY Milk Replacer

Dairy Days March 5 at
Farm & Home Center

YOUNG BROS.

NURS-ETTE SALES AND SERVICE

Ph 717-548-2462

Peach Bottom RD 1, Pa 17563