



Chester-Delaware dairymen were honored for having high producing herds this past year at the tenth annual District II Meeting for Atlantic Breeders Cooperative members held February 14 at The Stone Barn, Kennett Square, Pa.

Receiving Certificates of Merit for having top Dairy Herd Improvement Association averages were, left to right, George Lamborn, Vernon Ruth and Earl Weir. Not shown, but receiving an award, was John S. Stoltzfus.

All herds were at least 15 per cent above the state average for butterfat last year, while at least two-thirds of

the cows in these herds are progeny of Atlantic sires. The awards were presented by Ed Sauder, Atlantic's Field Supervisor for this area.

Reports by District II Director William Moore of Chathow, Pa., and management representative Harry Roth, Programs Director, informed members that Atlantic completed a successful business year and the net savings has been issued as a patronage dividend.

### PSU Experts

### Will Discuss Food Outlook

What is the outlook for food prices and food supplies in 1974? Do food and feed shortages really exist, or is there a credibility gap? How do national and international policies and events affect the consumer and the farmer? Are larger stockpiles of surplus grains necessary?

These are some of the concerns that Penn State economists, H. Louis Moore and Harold Neigh, will focus on Tuesday evening March 5, 1974 at the Chester County Cooperative Extension Service Annual Dinner Meeting. The public is invited to attend. Dinner reservations are necessary, and may be made by Monday, February 25, by calling 696-3500.

The event will be held 7:00 P.M. at the Alert Fire Company, 122 Pennsylvania Avenue, Downingtown.

**To Loosen A Ring**  
To loosen a tight ring, rub soap over the finger above and below the ring. It will slide off when the hand is washed

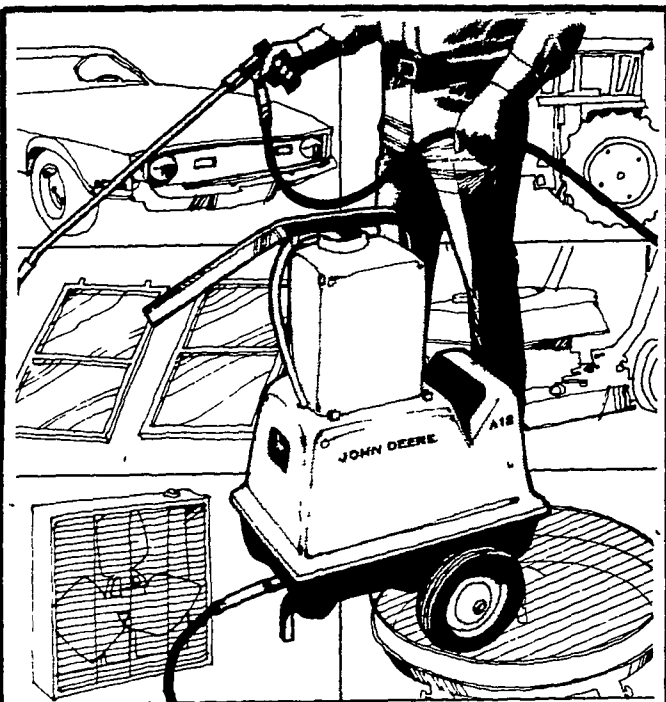
### TRY A CLASSIFIED AD

3518  
&  
3517  
  
3368  
3334A  
3306  
3369A

Two outstanding med season varieties. Stalk strength second to none with excellent yield ability.

Four full season varieties which have proven themselves in southeastern Pa. Excellent for husking or silage. When ordering seed corn please consider the Pioneer Team.

## The best from start to finish



### John Deere Portable Washers make tough cleaning jobs fast and easy!

Blast dirt, grease, and grime with a John Deere Portable High-Pressure Washer. Degrease driveways, engines, window fans, and barbecue grills. Equipment of all kinds at home or on the job. John Deere A18 washer with 500-550 psi at the nozzle knocks accumulated grime off storms and screens, masonry, building exteriors. Scours swimming pools, patios. Wash, rinse, even spray wax! Just hook up hose and plug unit into 115-volt outlet. Removable 2 1/2 gallon detergent-concentrate container meters cleaning agents into water. For fast and easy cleaning, stop in and see the versatile A18.

Tackle even bigger cleaning chores with "big brother" units A25 (700-750 psi at nozzle) or A40 (1000-1100 psi at nozzle)



**ADAMSTOWN EQUIPMENT INC.**

Mohnton RD2 Pa 19540  
(near Adamstown)  
Phone (215) 484-4391

**LANDIS BROS. INC.**  
Lancaster 393-3906

**A. B. C. GROFF, INC.**  
New Holland 354-4191

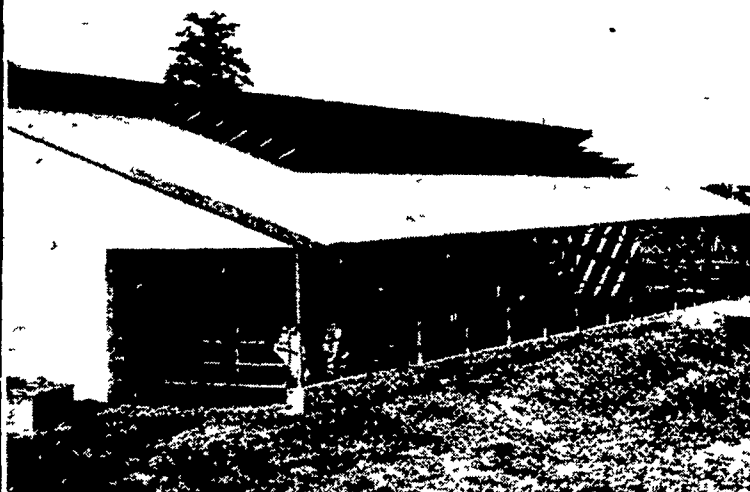
**M. S. YEARSLEY & SONS**  
West Chester 696-2993

**SHOTZBERGER'S**  
Elm 665-2141

**WENGER IMPLEMENT, INC.**  
The Buck 284-4141

## PUT YOURSELF INTO THE FUTURE! LET THE SUNSHINE IN WITH... SOLAIR SYSTEMS

### SOLAIR COW BAY WITH THE "SUN SENSOR"



#### FEATURES THE FOLLOWING:

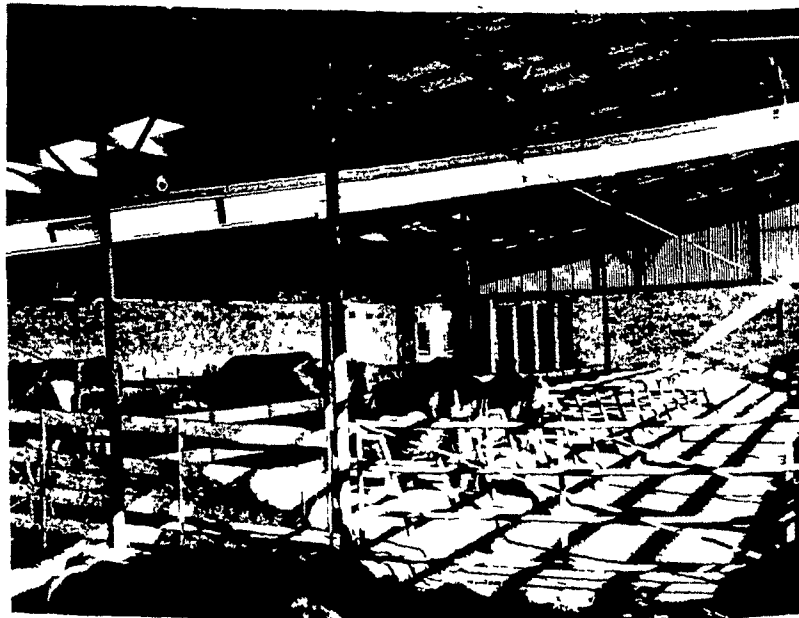
1. Storm-and fire-resistant construction.
2. Rapid evaporation and dehumidification through "solar thermo" circulation.
3. Engineered for expansion.
4. Designed for either beef or dairy cattle.
5. Straight line scrape areas.
6. "Quick dry" floor areas.
7. North side ventilation — summer only.
8. Three sided wall structure — open South.
9. "Jalousie type" Southern roof provides direct sun rays on 80 per cent of floor — OPTIONAL.
10. "Sun Sensor" control automatically opens and closes optional jalousie roof for maximum winter comfort.
11. Complete herd grouping accommodations.
12. Automated feed control.

### WE'RE INTERESTED IN ECOLOGY!

With our completely covered lots and a sun roof with an open peak, rain water does not enter the bay area and maximum evaporation of animal liquids is obtained. An "all-drained" floor system is installed and a curbed fence line keeps manure in place to be scraped into a liquid pit or a push-off loading system. By preventing manure run-off the surrounding area is not polluted.

Yes, since your urban neighbors and government fathers are interested in ecology, we are ready to help you build a system that will put you ahead on the pollution problem.

And, low moisture levels in Solair Systems results in less bacteria action and fewer odors.



### DISTRIBUTORS FOR:

• VAN DALE, INC.

• VAUGHAN

• PAMLIN

• MADISON SILOS

• MECHANIZED FEED LOT SYSTEMS

## CALEB M. WENGER, INC.

R. D. 1 Drumore Center, Quarryville, Pa.

Phone 548-2116