

Public Sales Register

(Continued From Page 34)

FRIDAY, MARCH 15 - 11:30 A.M. Public Sale of Farm Equipment located one mile east of Mount Joy, just off Route 230, along Newcomer Road. Sale by Mrs. Margaret J. Newcomer, executrix of Mark Newcomer Estate; Raymond Miller and Rufus Geib, Auctioneers

SAT. MARCH 16 - 11 A.M. Public Sale of Farm Machinery, Ear Corn, Hay & Straw located approx. 2 1/2 miles north of Delta and approx. 5 miles south of Rt. 372 (Norman Wood Bridge Rd.) along Rt. 74 in York Co., Pa. Sale by Mr. & Mrs. William Reed, Airville, Pa. owners; Robert L. Sechrist, Auctioneer.

SAT. MARCH 16 - 11 A.M. Public Auction of 52 Head High Grade Holstein Dairy Herd, Dairy Equipment, Hay, Straw, Corn located in the borough of Gratz, Upper Dauphin County, Pa., next to Gratz Fairgrounds; turn North off Route 25 at Reed's Inn. Sale by Earl E. Engle, owner; Deibert and Deibler, Auctioneers.

SAT. MARCH 16 - Public Sale of Farm Machinery Dispersal and Antiques located in North Lebanon Twp., Lebanon County, Pa. Sale by Alfred R. Brandt; Earl S. Buffenmeyer, Auctioneer.

MON. MARCH 18 - 10 A.M. Public Sale of Farm Machinery by M. M. Weaver & Sons, N. Groffdale Road, Leola, Pa. 17540

WED. MARCH 20 - Public Sale of Farm Machinery and

Household Furnishings located in Bethel Twp., Berks County, Pa. Sale by David G. Musselman, Earl S. Buffenmeyer, Auctioneer.

WED. MARCH 20 - Paul Z. Martin's Farm Equipment Sale located 2 miles East of Intercourse, Pa. along Route 340.

THURS. MARCH 21 - 10 A.M. Public Sale of Horses and Mules, Farm Equipment and Brood Sows, located along Wissler Road, 1/4 miles North of Vogansville in Earl Twp., Lancaster Co., Pa. Directions from Hinkeltown follow Farmersville Rd. South to Wissler Rd., turn left onto Wissler Road first farm on left. Sale by Weaver Auker; Paul W. Horst and Leroy S. Horst, Auctioneers.

THURS. MAR. 21 - 11 A.M. West Virginia BCIA Performance Tested Bull Sale to be held at Wardsville, West Virginia. Sale sponsored by West Virginia University, West Virginia Dept. of Agriculture and the West Virginia BCIA Program.

THURS. MARCH 21 - 11 A.M. Public Sale of Farm Equipment and Holstein Dairy Cattle located 3 miles South of Nine Points off Route 896, 1/2 mile east of Andrews Bridge along Creek Road, Chester Co., Penna. Sale by James C. Groff; J. Everett Kreider and Carl Diller, Auctioneers.

THURS. MAR. 21 - 11:00 A.M. Public Sale of Holstein Dairy Cows, Heifers and Farm Machinery on the premises located 2 miles west of Gap, 7 miles east of Strasburg, just off Route 741, 1 mile south of Route 30 along Hoover Road. Terms by V. Emanuel Hoover; Leroy Zook, Auctioneer.

FRI. MARCH 22 - Vetamers Farm Dispersal at the Black & White Holstein Farm, 2220 Dairy Road, Lancaster, Pa. across from the Comet Drive-in Theatre or 1/4 mile west of breeding unit. Dispersal by Drs. Hagen and Heisey. Sale managed by Hanover Hills Sales & Service, Amenia, New York.

SAT. MARCH 23 - Public Sale of Farm Implement, located between Lititz and Manheim on Route 772. Terms by Ida Brubaker, Executrix for John S.

Brubaker; Elmer Murry, Auctioneer.

SAT. MARCH 23 - 10 A.M. Public Sale of Farm Machinery, Tools, Hay, Corn, Butchering Tools, Antiques and Household Goods located approx. 1 1/2 miles north of Stewartstown off Rt. 24 on the corner of Ebaugh and Althouse School Roads, in York Co., Pa. Sale by W. Everett & Romaine Ebaugh, RD3, Stewartstown, Pa.; Robert L. Sechrist, Auctioneer.

SAT. MARCH 23 - 9:30 A.M. Public Auction of Farm Equipment, Tools and Household Items located in the Borough of Gratz, Upper Dauphin County, Pa. next to Gratz Fairgrounds; turn North off Route 25 at Reed's Inn. Sale by Earl E. Engle, Owner; Deibert and Deibler, Auctioneers.

WED. MARCH 27 - 10:30 A.M. Public Sale of Farm Machinery, Tools, Antiques, and Household Items located along Rt. 24 in the Village of Rinely, York Co., Pa. Terms by Mrs. Theodore Mundis, Owner, RD2, Stewartstown, Pa. Robert L. Sechrist, Auctioneer.

WED. MAR. 27 - Public Sale of Farm Equipment located north side of Scheafferstown by Marlin Martin. John E. and Paul E. Martin, Auctioneers.

THURS. FEB. 28 - 10 A.M. Public Sale of Valuable Modern Farm Equip., Trucks, Grain Bin, Dairy Equip., etc. located 6 miles

east of Pottstown just off Te. 422, at Limerick follow North Lewis Rd. 1/2 mile to 1st. farm. Montgomery Co., Pa. Sale by Earl E. Hefentrager; Ralph W. Zetlemoyer and Nelson Weidenbach, Auctioneers.

THURS. MARCH 28 - 10:00 A.M. Lea-Vista Registered Holstein Dispersal, and Milking Herd, location - Travel 8 miles south of Hershey on Rt. 322, at Campbelltown, take Rt. 117 South 3 miles, along the Lawn Road; or Rt. 743 north of Elizabethtown to Rt. 341 toward Lawn, watch for arrows. Sale by Weidler Bros., RD2, Palmyra, Pa., Owners; Carl Diller and J. Everett Kreider, Auctioneers and Pedigrees.

THURS. MARCH 28 - Public Sale of 100 head Dairy Herd Dispersal located in Millcreek Twp., Lebanon County, Pa. Sale by Robert Balsbaugh, Sr. Earl S. Buffenmeyer, Auctioneer.

SAT. MARCH 30 - 11 A.M. Public Auction of Farm Equipment located 3 miles Northwest of Gratz; 3 miles Southeast of Pillow; Upper Dauphin County; watch for sale arrows along Route 25 West of Gratz and along Route 225 South of Pillow, Pa. Sale by Mr. & Mrs. Marvin R. Leshner, owners; George N. Deibert, Auctioneer.

MONDAY, APRIL 1, 1974 - Public Sale of Farm Machinery at Wenger Farm Machinery, Myerstown, Pa.

MON. APRIL 1 - Public Sale of Farm Machinery by Wenger's Farm Machinery, Inc., So. Race Street, Myerstown, Penna.

FRI. APRIL 5 - 11 A.M. Public Sale of Farm Equipment, Antiques and Household on the farm located 5 miles west of Hanover or 10 miles southeast of Gettysburg, Pa., on Route 116, close to Hostetters Grain Bins, then turn south 1 mile (sign posted): Sale by Mr. Aaron N. Bange and Mrs. Anna R. Bange, owners, RD4, Hanover, Pa.; Clair R. Slaybaugh, Auctioneer.

SAT. APRIL 6 - 9:30 A.M. C. H. Wolgemuth & Sons Annual All Day Sale located 4 miles West of Manheim, Lancaster Co., Pa. Tractors, Farm Equipment. Anything sold on Commission

SAT. APRIL 13 - 10 A.M. Sixth Annual Public Sale of the Rawlinsville Fire Co. Farm Implements, Household Goods and Antiques. Items sold on commission, Food Served. Phone 284-4362 or 284-4530.

SAT. MAY 4 - 10:30 A.M. Heifer Sale, 700 head, at the Black & White Holstein Farm, 2220 Dairy Road, Lancaster, Pa. across from the Comet Drive-in Theatre or 1/4 mile west of breeding unit. Charles C. Myers and Park Myers, Sales Managers.

MEMO HAY, STRAW and EAR CORN SALE EVERY MONDAY AT 11 A.M. New Holland Sales Stables, Inc. Phone 717-354-4341 Lloyd H. Kreider, Auct.

PUBLIC AUCTION

AT RUDNICK'S DAIRY BARN GALENA, MD.

TUES. FEB. 12 at 7:00 p.m.

40 Holstein Cows, 1 herd sire, many fresh, some close springers, others in full flow of milk. Consigned by - Wallace Harris and to be sold at Galena, Md. (other consignments)

LLOYD H. KREIDER AUCTIONEER and SALES MANAGER

330 West State St Box 2 RD1 Quarryville, Pa. 17566 Ph 786-3394

PUBLIC AUCTION 225-250 FEEDER PIGS

SATURDAY, FEBRUARY 16, 1974

AT 1:30 P.M.

Location: Between Womelsdorf and Myerstown along Route 422, at Stouchsburg take Scharff Road South 1 mile, third farm on left, 1/2 mile North of Sheridan Furnaces; Marion Twp. Berks County, Penna.

30-60 POUND CHOICE FEEDER PIGS HAMPSHIRE - YORK - DUROC CROSS

All pigs are vaccinated for Erysipelas castrated young wormed tails crocked, sprayed for mange and lice All pigs were raised on this farm No outside pigs will be sold on this sale Sale time 1 30 p m

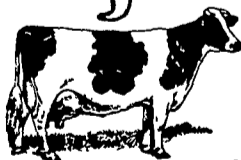
TERMS BY

WALTER M. HORST

Newmanstown R.D.1 - 589-2282

John E. and Paul E. Martin - Auctioneers

NITE COW SALE 60 HEAD



Including Osbornedale Ivanhoe VG89; Romandale Reflection; Marquis VG87

at Black and White Holstein Farm, Lancaster, Pa. across from the Comet Drive-in Theatre or 1/4 mi. west of breeding unit

ON FRIDAY NIGHT FEB. 15, at 8 o'clock

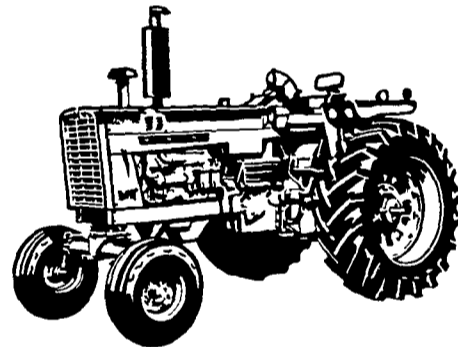
Farmers and dairymen, if you are in the need of top quality herd replacements these are the kind you have been looking for. They are all purchased first hand from farms where they were raised by some of the best judges of dairy cows in the business. If you need a can of milk per day or 100 lbs per day we have the cows for you. Just by all means get to this sale

CHARLES C. MYERS

OWNER 717-569-2106 or 717-569-6800

ABE DIFFENBACH: Auct. HENRY KETTERING: Pedigrees PARK MYERS, Sales Manager

USED TRACTORS



Allis Chalmers

A.C. 2-10 (2) A.C. D19 D & G A.C. D17 D

FARMALL

Farmall H Farmall 856 Farmall 1206 Farmall 544 Farmall 460 Farmall 1256 w-cab.

Misc. Tractors

M.M. 706 M.M. Jet 3 w-loader M.M. 1050 M.F. 65 M.F. 1150 D.B. 990 (2) Case 930 D

JOHN DEERE

J.D. 730 D J.D. 2020 D J.D. 4020 D J.D. 2510 D J D A J.D. 630 J.D. 1010 J.D. 320

OLIVER

(2) Oliver 1855 (3) Oliver 1655 Oliver 2055 Oliver 1750 Oliver 1950 T

FORD

(2) Ford 4000 G Ford 2000 D Ford Jub (2) Ford 5000 D Ford. 9000

MYERSTOWN, PENNSYLVANIA 17067 25 Miles East of Harrisburg 4 Miles from Lebanon Valley Airport

wenger's FARM & INDUSTRIAL EQUIPMENT

TELEPHONE (717) 866-2138 "Home of Quality"