

GIGANTIC AUCTION

\$1,500,000 FARM AND INDUSTRIAL EQUIPMENT

MONDAY AND TUESDAY

JANUARY 28 AND 29 9:00 A.M.

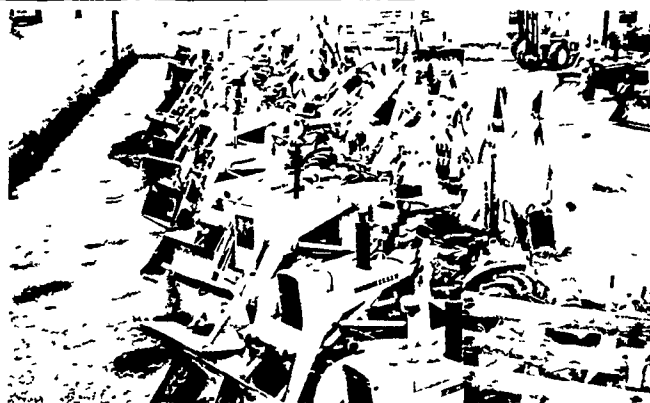
LUNCH SERVED BY MYERSTOWN BRETHREN CHURCH

WENGER'S FARM MACHINERY, INC.

SOUTH RACE STREET

Location: South Race Street Myerstown, Pennsylvania - 6 miles East of Lebanon Pa. on State Road No. 622 which is located 20 miles West of Reading Pa. and 38 miles East of Harrisburg Pa. NOTE: Commercial air travel into Harrisburg, Pa. Private planes may land on asphalt air strip at County Airport in Myerstown, Pa. near the sale site. Overnight accommodations may be arranged by calling (717) 866-2138

MYERSTOWN, PENNSYLVANIA



MONDAY, JAN. 28

INDUSTRIAL EQUIPMENT AND TRUCKS

TUES., JAN. 29

FARM MACHINERY

TRACTORS
TRACTORS SOLD IN HEATED BUILDING

JOHN DEERE	IH	ALLIS	CASE	MF
2JD A -JD B -JD M 300 420 2450 4750 2720 1010 4250 2520 23010 33020 -4010 44250 44250 5020 4520 Nuffield 1042	-Cub Leiby Super A Farmall 8H Farmall 3H Farmall 5M Farmall 340 Farmall 2450 Farmall 4456 Farmall 706 Farmall 406 Farmall 756 Farmall 456 Farmall 428 Farmall 21206 Farmall 1256 Farmall 404 Farmall 444 Farmall 504 Farmall 544 Farmall 574 Farmall 450 Farmall 4100 Farmall	CHALMERS D-15 2D-17 2D-19 180 190XT 77 2-1655 1750 1755 1850 21800 1950 2055 2150 1255 1955 1600	OLIVER MM Jet Star 3 ATA Plantman David Brown 1200 FORD Owatonna 1700 Malroe 500 Universal Case 1737 Case 1537 Case 1530 3 Thomas 1700	SKID LOADERS Owatonna 1700 Malroe 500 Universal Case 1737 Case 1537 Case 1530 3 Thomas 1700

CRAWLERS

- AC HD4 Loader of Backhoe
- JD 40 Dozer
- Cat D8 Dozers (1 D8H)
- JD 450 Dozer
- JD 350 Dozers (1 which 1 hyd angle)
- Cat 941 Loader
- Case 1000 Dozer (hyd angle)
- AC HD3 Dozer (hyd angle)
- JD 1010 Loader
- Case 1000 Loader of Ripper
- JD 440 Loader
- Int T340 Loader
- Cat 955H Loader Pedal Steer
- 4 Cat 955K Loaders (3 851 Series 1 Ripper)
- Cat 450 Loader
- 2 AC HD6 Loaders
- 2 JD 450 Loaders
- Oliver OC3 Loader
- 2 Oliver OC3
- Int 150
- Cat 955-12A Loader
- Int TD9 Loader
- AC HD5 Loader
- 2 Case 400 Loaders
- 4 JD 420 Dozers
- 2 JD 440 Dozers (winches)
- 2 1010 Dozers
- 4 Cat 933 Loaders

COMBINES

- AC Gleaner C2
- AC Gleaner E
- AC 4 Row Cornhead
- 3 AC 2 Row Cornheads
- 2 JD 40
- 2 JD 3 Row Cornheads
- 3 JD 2 Row Cornheads
- JD 30
- 3 MC 203
- MC 3 Row Cornhead
- MC 80
- MC 13 Grain Platform
- 3 Int 315
- 2 MF 510
- 2 MF 2 Row Cornheads
- 3 MF Grainheads
- 2 NI Uni-Systems
- 2 NI Uni-Harvester
- NI Uni-Husker
- 2 NI Uni-Pick Up Heads

MISC. FARM EQUIPMENT

- 20 3 Blades
- 40 Gravity Bins
- 6 Corn Crib
- 4 Garden Tractors
- 25 Rates
- 12 Post Hole Diggers
- Int 2 Row Potato Digger
- Int 2 Row Mtd
- Ford 2 Row Mtd
- 2 Ford 1 Row Mtd
- Int 234
- MM 2 Row Pull Type
- 2 Oliver 73 H

CORN PICKERS

- NS 310
- NS 323
- 4 NS 2 Row Mtd
- 2 NS Husking Bed
- 2 NS Grinder Attach
- 6 NS Sheller Attach
- 11 NS 2 Row Pull Type
- Int 2 MH
- Ford 2 Row Mtd
- 2 Ford 1 Row Mtd
- Int 234
- MM 2 Row Pull Type
- 2 Oliver 73 H

CORN SHELLERS

- 3 MM
- 1 JD

BLOWERS

- 3 Gehl
- 2 Kools
- 2 NH
- Fox
- Supreme

BALERS

- NH 68 W/PTO Thresher
- AC 302 W/PTO Thresher
- AC 303 W/PTO Thresher
- NH 66
- 4 Balethrower Attach

SPREADERS

- 6 Starline
- 8 NI
- 5 NH
- 2 Olivers
- 3 MC
- AC

FORKLIFTS

- Towmotor LT 72
- AC 1 600
- Baker
- Int 7000
- 2 Case 580
- Taylor

ELEVATORS

- 12 Various Makes & Lengths

HARROWS

- 3 Spike
- Oliver Wheel Harrow
- Brillion Wheel Harrow
- 15 Misc. Spring Harrows

HARVESTERS

- Int 50
- 2 Int 16
- NH 818
- 2 Case 300
- 3 NH 717
- JD 38
- 3 Fox Harvesters
- NH 818 Self Propelled
- Gehl Self Propelled
- 10 Misc. Corn & Pick up Attachments

MISC. CONSTRUCTION

- 2 Sweepers
- 1969 Northwest Backhoe on tracks (Model 41 S/N 25082)
- Cement Mixer
- 2 Winches
- Huver Maintainer
- 2 Air Compressors
- 5 Asphalt Rollers
- Leaf Vacuum
- Dozer Blade
- Dump Body
- Trencher
- 5 Road Graders
- 2 Log Skidders
- 7 Tag-A Long Trailers
- Rogers 25 ton Detachable Goose-Neck Trailer
- 3 Low-Boy Trailers
- 2 Box Scrapers

BACKHOES

- Case 680
- AC 1400
- Ford 5550
- Parsons 15
- M F 2200
- Ford 4500
- Case 580
- Case 530
- JD 500A
- JD 400
- 2 Backhoe Attachments

RUBBER TIRED LOADERS

- JD 544
- Cat 9228
- Hough 100
- Terex 72 10
- Michigan 175A
- AC TL30
- Case WSD
- Hough 25
- Larain ML 225

TRUCKS

- 2 1962 Ford F600 Dump
- 1965 GMC 4000 Flatbed
- 1968 GMC 5500 Flatbed
- 1966 Ford 750 Flatbed
- 2 1966 Chevy Tractors
- 1967 GMC Tractor
- 1968 Int. 3 Axle Dump
- 1968 Chev Van
- 1966 GMC 3 Axle Dump
- 1968 Int. 10 Wheel Dump
- 1972 Chev Flatbed
- 1969 Ford Cement Mixer Truck
- 1963 Chev 10 Wheel Dump
- 2 1964 Ford 10 Wheel Dump
- 1969 Int Truck Tractor
- 1973 Ford Pickup
- 2 1962 Int. Dump Trucks
- 1967 Chev Flatbed
- 1970 Chev Rollback
- 1970 Ford Horsevan
- 1968 GMC Welder Truck
- 5 Mack Tractors

PLOWS

- 2 AC 3X
- 2 AC 4X (1 steerable)
- 2 AC 5X (steerable)
- AC 7X (steerable)
- Ford 1X
- 4 Ford 2X
- 3 Ford 3X
- Ford 4X
- JD 2X 3
- 10 JD 3X
- 10 JD 4X (7 steerable)
- JD 4 Automatic Reset (steerable)
- 6 JD 5X (steerable)
- 3 JD 5X Reset (steerable)
- JD 6X
- 3 Oliver 2X
- 3 Oliver 4X (2 steerable)
- 2 Oliver 4X (steerable)
- 2 Oliver 5X (steerable)
- 2 Oliver 5X Reset (steerable)
- 2 Int 1X
- 3 Int 2X
- 6 Int 3X
- 6-Int 4X (5 steerable)
- 5-Int 5X (4 steerable)
- Int 6X (steerable)
- Int 7X (steerable)
- 2 National 3X

RAKES

- 4 NH (late)
- 3 NI (late)
- 2 JD (late)
- 5 Misc.

HAY CRUSHERS

- NS Cut Ditioner
- MC Crusher
- 4 NS Crushers
- 4 AC Crushers
- 2 JD
- Gehl

CULTIPACKERS

- 12 Various

FERT. DRILLS & SPREADERS

- 6 Misc. Drills
- 10 Spruders

DISC HARROWS

- 6 Int. Pull Type
- 2 Int FH
- 8 Int Wheel Discs
- 8 JD Pull Type
- 16 JD Wheel Discs
- 4 JD Offset Discs
- Case Wheel Disc
- 5 Oliver Wheel Discs
- Athens Offset Disc
- King Offset Disc
- Miller Offset Disc
- Long Offset Disc
- 2 Ford 3 Pt Discs

CULTIMULCHERS

- 3 JD
- 3 Chattanooga
- 4 Brillion
- Durham

WAGONS

- 10 Self Unloading
- 4 Flatbed
- 3 Trailers

MOWER CONDITIONERS

- MC 201 Self Propelled
- NH 565
- 2 NH 469
- 2 Owatonna 9
- AC 9
- 2 NH 460

LOADERS

- 30 Assorted Loaders of various makes and models including some new

CULTIVATORS

- 10 Ford 2 Row 3 Pt.
- 4 JD 4 Row Rear Mtd
- 6 Misc. JD
- 2 Int. 4 Row Rear Mtd
- 20 Misc. Int
- 2 Case Field Cult
- 2 JD Field Cult
- 10 Misc Cult

CORN PLANTERS

- New Int 2 Row
- 6 Int 2 Row
- 6 Int 4 Row
- 4 JD 2 Row
- 3 JD 4 Row
- JD 8 Row
- Oliver 4 Row
- MM 4 Row
- MF 4 Row
- MF 6 Row
- MF 2 Row
- Ford 4 Row
- Ford 2 Row
- AC 2 Row
- Case 4 Row Chisel Planter

GRAIN DRILLS

- 6-JD
- 2-Int
- MI
- SC

FEED MILLS

- 2 Helix
- JD
- 2 NH
- Int

STALK CHOPPERS

- 3 NH 36
- 2 JD 16A
- 2 JD 15
- 2 Ford Rear Mtd
- 3 Brady
- 4 NH 33
- AC 56
- Gehl 72
- Bearcat
- 4 Misc

Terms: Full settlement before machinery is moved. Pay 20% down sale day and full settlement when you remove your purchases from the lot. Final removal date and balance due date on or before February 9, 1974. Trucking is available at the customary rate. FINANCING AVAILABLE FOR FARM EQUIPMENT THRU C.C.E.C. FINANCING AVAILABLE FOR INDUSTRIAL EQUIPMENT THRU EQUIPMENT FINANCE INC.

ATTENTION - FARMERS & DEALERS: This will be one of the largest line of Farm & Industrial Equipment ever to be sold at auction. Selling will be Monday, Jan. 28 starting at 9 o'clock a.m. Construction equipment and trucks. Farm Tractors sell at 1 o'clock Monday. All other farm equipment will sell starting at 9 o'clock Tuesday. Don't miss this sale - Everything must be sold to the highest bidder. We invite you as buyer or visitor. - Midwest Auction Co.

SALE CONDUCTED BY MIDWEST AUCTION COMPANY

GRAND MEADOW, MINNESOTA AUCTS. R.D. McWHIRTER & CON CLEMENT

FOR MORE INFORMATION CONTACT

WENGER FARM MACHINERY, INC 717-866-2138 NIGHT - LLOYD WENGER 717-866-7147

CON CLEMENT MIDWEST AUCTION COMPANY 507-754-5121 GRAND MEADOW, MINN.