

POULTRY MARKET REPORTS

New England Weekly Shell Egg Report

Tuesday, January 8, 1974

Prices paid per dozen Grade "A" brown eggs in cartons delivered to retail stores:

| | EX LARGE | LARGE | MEDIUM | SMALL |
|----------|----------|-------|--------|---------|
| MASS+ | 78-83 | 77-81 | 76-81 | 61-65 |
| Mostly | 79-81 | 78-80 | 76-80 | 62-64 |
| NEW HAMP | 76-83 | 75-82 | 74-81 | 60-67 |
| Mostly | 78-79 | 77-78 | 76-77 | 62-63 |
| R. I. | 81-82 | 80-81 | 80-81 | 64-65 |
| Mostly | | | | |
| VERMONT | 79-88 | 78-87 | 78-87 | TOO FEW |
| Mostly | | | | |
| MAINE | 79-81 | 78-80 | 78-80 | 62-64 |
| Mostly | | | | |

+Includes Central & Western Sections Only.

NEST RUN EGGS

Prices are from Egg Clearinghouse, Inc., (ECI) Durham, N.H. and reflect trading prices for gradeable nest run eggs (GNR) on ECI, a nationwide trading center for producers, packers and marketers. GNR eggs are classified by weight in 30-dozen cases, and traded in lots of either 300 or 750 cases. Prices are FOB buyers dock, and are computed Tuesday and Thursday of each week. This week's prices for each classification were:

| Classification | New Weight Per Case | Tuesday | | Thursday | |
|------------------|---------------------|----------|----|----------|----|
| | | Per Case | 0 | Per Case | 0 |
| Extra Large | 51 lbs. | | 0 | | 0 |
| Class 1 - Large | 48 lbs. | | 67 | | 67 |
| Class 3 - Medium | 42 lbs. | | 65 | | 65 |
| Class 4 - Small | 39 lbs. | | 58 | | 57 |
| Breaking Stock | 48 lbs. | | 56 | | 56 |
| Checks | 48 lbs. | | 46 | | 46 |

Esbenshades Win Turkey Competition

Esbenshades Turkey Farm, Paradise, made a clean sweep of the top three prizes in dressed turkey competition at the Farm Show. Esbenshade gobblers took champion and reserve champion honors in the dressed bird category, and captured first place also in the best dressed turkey display. The Lancaster County turkey growers were the only area entrants in dressed turkey competition, and they sent their Cumberland County competitors home with only one blue ribbon and none of the top prizes.

First place large young tom, first and second large young hen, and first place medium young hen were all Esbenshade birds. Konhaus Farms, Mechanicsburg, one of four Cumberland County entrants, took first prize in the small young toms category.

E. E. Stiteley of Glen Rock RD1, York County, was another big winner in poultry competition, with a total of 30 first prizes in the vast number of poultry categories. Behney & Miller, Myerstown RD1, Lebanon County, also garnered their share of blue ribbons, as they

do every year. They had 25 first place awards. Another big area winner was Russell Minnich, Kutztown RD2, Berks County, with 21 first placings.

Other area exhibitors with at least one first place were:

Lancaster County - Ray W. Baker, 312 W. Ferdinand St.; and Ammon Shelley, Box 85, Manheim, Paul Meiskey, 1111 Brunnerville Rd., Lititz.

Lebanon County - Ben Maurer, III, 1701 S. Lincoln Ave., Lebanon.

Berks County - Daniel Kuhns, Kutztown RD2; Minerva E. Minnich, Kutztown RD2; William Strickler, Box 549, Reading; William O. Strickler, RD33, Reading.

Chester County - Curtis R. Oakes, Cochran RD1.

York County - Kieth Lentz, Dillsburg RD3, and Norwood A. Reed, 2450 N. George St., York.

York County youths dominated the 4-H capon show with their entries. In Cornish and cross breed

Egg Market

Wednesday, January 9
Baltimore Eggs

Market about steady. Demand fair to good. Supplies adequate with additional offerings from southern producing areas. Cartoned eggs: Prices to retailers, state graded (min one case sale) white Grade A Large 81-87, mostly 81-83, Grade A Medium 79-85, mostly 79-81.

Wednesday, January 9
Philadelphia Eggs

Prices unchanged. Cartoning demand irregular ranging light to good depending on involvement with strike conditions. Offerings adequate and in fairly good balance with current needs. Undertone steady.

Prices to retailers: Sales to volume buyers, consumer grades white eggs in cartons. Delivered Store Door

| | | |
|---------------|----|-----|
| A Extra Large | 79 | 80½ |
| A Large | 78 | 79½ |
| A Medium | 74 | 75½ |

Eastern Pa. & N.J.
Wednesday, January 9
Live Poultry

Prices lower on light type hens. Demand fair though unaggressive. Offerings fully adequate to ample. Demand light for adequate heavy type hens.

Prices paid at farm: Light type hens 8-10, mostly 9-10 in Pa., mostly 9-10 in N. J. Heavy type hens TFEWR.

Delmarva

Wednesday, January 9
Broiler-Fryer Market

Ready to cook movement mixed ranging light to fair despite attractive price levels as a fast moving storm disrupts travel and strikes at retail stores in the Philadelphia area limit activity. Slaughter schedules irregular but overall fairly heavy. Less than trucklot prices 2-4 cents lower on both plant and US Grade A. Live supplies ample at heavier than desired weights. Undertone very unsettled.

Negotiated trucklot prices 2-3 pound ready to cook broiler-fryers for delivery

competition, first through fifth places all went to York Countians, listed in order: Pearl and Wanda Kneller, Brodbeck RD1; Roy Thompson, East Berlin RD1, and Emily and Joyce Livingston, Dover RD2.

This same quintet also took the top five prizes in dressed capon competition, changing only the order of their placings. First through fifth were Joyce Livingston, Roy Thompson, Emily

Livingston, and Pearl and Wanda Kneller.

In vocational poultry competition, Heather and Shawn Hernley, Lebanon RD3, took first and second prize, respectively, for their capons. Dave Amspacher, Red Lion, York County, had the best pen of three females in the White Leghorn category, while the Kutztown Area FFA showed the best pen of three females for all breeds.

from HISTORY'S SCRAPBOOK

DATES AND EVENTS FROM YESTERYEARS

Daniel Webster, famous American statesman and orator, was born on January 18, 1782.

Robert E. Lee, commander-in-chief of the Confederate armies, was born on January 19, 1807.

On January 20, 1887, the Senate permitted the U.S. Navy to lease Pearl Harbor as a base.

Nikolai Lenin, a leader of the Russian Revolution, died on January 21, 1924.

Queen Victoria died on January 22, 1901.

On January 23, 1845, Congress decided all national elections will take place on the first Tuesday following the first Monday in November.

Gold was discovered near Sutter's Mill in California on January 24, 1848.

Weekly New York Egg Market

From Monday, January 7th to Friday, January 11th

| | Mon. | Tues. | Wed. | Thurs. | Fri. |
|----------------|------|-------|------|--------|------|
| WHITE Fcy. Ex. | | | | | |
| Lge. | 74 | 74 | 74 | 74 | 74 |
| Large | 74 | 74 | 74 | 74 | 74 |
| Mediums | 72 | 72 | 72 | 72 | 72 |
| Pullets | 67 | 67 | 67 | 67 | 67 |
| Peewees | 50 | 50 | 50 | 50 | 50 |

| | | | | | |
|-----------------|----------|----|----|----|----|
| BROWN Fcy. Lge. | 74 | 74 | 74 | 74 | 75 |
| Mediums | Unquoted | | | | |
| Pullets | Unquoted | | | | |
| Peewees | Unquoted | | | | |

| | | | | | |
|----------------|----|----|----|----|----|
| Off Grade Lge. | 69 | 69 | 69 | 69 | 69 |
| Checks | 44 | 44 | 44 | 44 | 44 |

Long Tone — Full Steady.

Copyright 1973 Urner Barry Publications

next week:
Plant Grade 31-33 Mostly 33
Pool trucklot prices for Thursday arrival:
US Grade A 34-37 Mostly 34
Plant Grade 33-35 Mostly 33

a.m. to 12 Noon. Sale at 11:30 a.m.

Directions — Take Rt. 22 thruway. Exit at Fogelsville exit. North on stoplight in Fogelsville, turn left, proceed 1 mile.

Fogelsville

January 9, 1974

(Prices paid dock weights cents per lb.)

No market report available.

Poultry received Monday 7 p.m. to 10:30 p.m. Tuesday 7

Big Thirst!

Americans have a big thirst for soft drinks, whether they call them "soda" in New York, "tonic" in Boston, or "pop" anywhere else. Last year the average American drank more than a glass a day, or 406 eight-ounce glasses - a full gallon more than the year before.

Fishing?

The boss is mad today. It seems his wife asked him if he remembered all those trout he was fishing for last summer. He said "yes." And she said: "Well one of them called up here last night and left her number."

Guanacos?

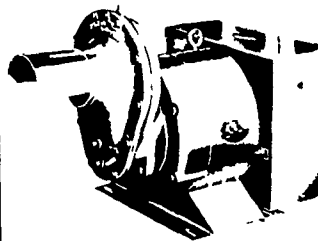
Guanacos, relatives of the camel, llama, alpaca and vicuna, once roamed the entire Andes range in South America. Men eager for fleecy guanaco hides have hunted the animals nearly to extinction.

TRY A CLASSIFIED

WINPOWER



TRACTOR DRIVEN ALTERNATORS



WORLD'S LARGEST MFG. OF TRACTOR-DRIVEN ALTERNATORS

with 45 years continuous experience to give you the best quality unit for long years of service, and to protect your family against huge losses due to power outages, and brown outs.

BUY OR LEASE - YOUR WINPOWER ALTERNATOR TODAY CALL 717 733-7911 FOR AN APPOINTMENT ON YOUR FARM L. J. EDWARDS FARM SALES MGR.



ELECTROMECC

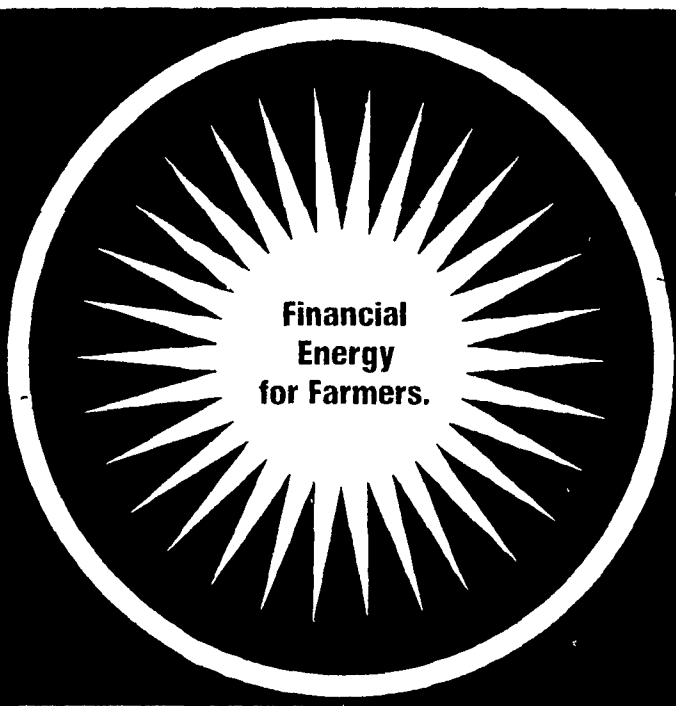
ELECTROMECHANICAL SERVICE

ROUTE 222, EPHRATA, PA. 17522

PHONE (717) 733-7911

LP NATURAL GAS GASOLINE DIESEL ENGINE GEN SETS TO 200,000 WATTS

ELECTRIC MOTOR • GENERATOR • POWER TOOL SPECIALISTS



FARMERS AgCREDIT

9 East Main Street Lititz PA 717 626-4721

Lancaster Farming

P.O. Box 266 - Lititz, Pa. 17543
Office: 22 E. Main St., Lititz, Pa. 17543
Record-Express Office Bldg.
Phone: Lancaster 717-394-3047
or Lititz 717-626-2191
Richard E. Wanner, Editor

Subscription price: \$2 per year in Lancaster County; \$3 elsewhere

Established November 4, 1955

Published every Saturday by Lancaster Farming, Lititz, Pa.

Second Class Postage paid at Lititz, Pa. 17543

Members of Newspaper Farm Editors Assn., Pa. Newspaper Publishers Association, and National Newspaper Association.