

Hog Prices

Lancaster Auction

Wednesday, January 2
Barrows and gilts mostly 1.00 lower.
BARROWS AND GILTS: US 1 200-230 lb. 44.50-44.85; US 1-3 190-245 lb. 43.25-43.75; US 2-3 250-265 lb. 42.50-42.75.

Vintage Auction

Saturday, December 29
Hogs 798, Barrows and gilts 1.50 to 2.00 lower.
US No. 1-2 200-240 lbs. 43.75-44.10; US No. 1-3 195-235 lbs. 43.35-43.75; US No. 2-3 185-250 lbs. 43-43.50; US No. 2-4 120-185 lbs. 40-42.85; Sows 1-3 275-465 lbs. 32.75-35.35; few 2-3 400-665 lbs. 29.35-30.85; few Boars 29.10-33.
Wednesday, January 2
Hogs 528, Barrows and Gilts 25 to 50 cents lower, spots \$1.00 lower.
US No. 1-2 200-240 lbs. 44.50-45.50; US No. 1-3 200-250 lbs. 43.75-44.50; Sows 1-3 300-550 lbs. 32-35; Boars 29-31; Lightweights 33-36.

New Holland Auction

Monday, December 31
Hogs 1143, Market uneven, mostly 25 cents higher.
US No. 1-2 200-240 lbs. 44.75-47; US No. 1-3 200-245 lbs. 44.25-44.75; US No. 2-4 220-260 lbs. 43-44.25; US No. 2-4 185-200 lbs. 41.75-44.25; Sows 34-38; Boars 33-38.

Lebanon Valley Auction

No market report available.

Lancaster Market

No market report available.

Indianapolis Auction

HOGS: 2000.
Barrows and gilts fully steady, trading fairly active.
BARROWS AND GILTS: US 1-2 200-235 lb. 41.50-42.00; 46 head at 42.25; US 1-3 200-245 lb. 41.00-41.75.

Peoria Auction

HOGS: 4000.
Barrows and gilts steady, trading moderately active.
BARROWS AND GILTS: US 1-2 200-230 lb. 42.00-42.50; US 1-3 200-240 lb. 41.50-42.00.

St. Louis Auction

HOGS: 6000.
Barrows and gilts 1.00 lower.
BARROWS AND GILTS: US 1-3 200-230 lb. 41.50-42.00; 230-250 lb. 40.50-41.50.

New Holland Dairy Auction

Wednesday, January 2
Reported receipts of 186 cows and four heifers. Market steady with market two weeks ago.
Load of Pennsylvania cows, fresh 480-725.
Two loads of New York State cows, fresh 435-800; springers 635-900.
Load New York State cows, fresh 420-825.
80 head cows out of Kansas and Minnesota, fresh 500-825; springers 460-1300.
Locally consigned cows 460-800.
Springing heifers 510-650.

Oklahoma City

Thursday, January 3
Estimated Receipts 3,000
Same day last week 1,644
Same day last year 7,351
Trading now active, feeder steers and heifers over 400 pound 50 cents to 1.50 higher, some sales 2.00-2.50 higher on heifers over 500 pound and steers over 600 pound feeder calves under 400 in small supply and poorly tested. Moderate attendance buyers.

FEEDER STEERS: Part load Choice 338 pound 60.75; Choice 400-500 54.00-59.60; 500-600 51.00-54.80; 600-700 50.25-53.10, small lot 613 at 54.50; 700-800 48.90-51.90; 800-906 44.60-49.70, largely 45.50-48.50; Mixed Good and Choice 300-500 51.25-56.25; 500-700 46.75-50.75; 700-800 45.50-48.50; Good 375-550 45.00-50.75.

HOLSTEIN STEERS: Good 579-670 pound 42.50-46.00; Good 700-881 40.40-43.75, part load 1015 at 39.20.

FEEDER HEIFERS: Choice 300-400 48.00-51.10; 400-500 45.75-50.60; 500-600 45.75-47.60; 600-700 42.00-45.80; small lot 703 at 41.10; Mixed Good and Choice 300-500 43.00-47.75; 500-700 40.00-44.25.

For the week: Compared to late last week, feeder cattle over 400 pound mostly 50 cents to 1.50 higher with some sales on heifers over 500 pound and steers over 600 pound 2.00-2.50 higher; Slaughter cows 50 cents to 1.25 higher; Bulls fully 1.00 higher. Salable receipts near 5,300 head compared to 2,494 last week and 12,734 the comparable period a year ago. Feeders 83 percent of total; cows 15 percent cattle receipts.

Peoria Cattle

Thursday, January 3
CATTLE: Receipts this 4-day week 4841, compared to last week 4385, and to last year 4302.

Compared with last weeks close, slaughter steers 50 to mostly 1.00 higher. Slaughter heifers 50-75 higher. Cows and bulls fully steady. Supply about 65 percent slaughter steers, 25 percent slaughter heifers and the balance mostly cows.

SLAUGHTER STEERS: Choice and Prime 1175-1300 pounds yield grade 3-4, 41.50-43.00. Load 1215 3-4, 44.00 and a load 1385 4, 42.00. Choice and Prime 1448-1460 4-5, 38.50-39.00; Part load 1500 37.00. Choice 950-1250 2-4, 42.50-44.50; Load and part load at latter price with half load 45.00. Choice 1200-1300 3-4, 42.00-42.50. Mixed Good and Choice 900-1350 40.00-42.50. Good 38.50-40.50. Standard and Good Holsteins 37.00-38.50. Load Standard 36.50.

SLAUGHTER HEIFERS: Choice and Prime 900-1100 pounds yield grade 3-4, 41.00-42.50; Few 1000-1100 4-5, 40.00-41.00. Choice 800-1050 2-4, 41.00-43.00. Half load 43.25 and load 950 43.50. Mixed Good and Choice 750-1100 39.50-41.00. Good 37.50-39.50.

COWS: Utility and Commercial 28.00-33.50. High dressing Utility 34.00-35.00. Cutter 26.50-32.00. Canner 24.50-26.50.

BULLS: Yield grade 1-2, 1100-1800 pounds 37.00-40.00; Few yield grade 1, 41.00-42.00.

Futures Trading

(Closing bids as of Thursday, January 3)

	Chicago Cattle	Chicago Hogs	New York Maine Potatoes	Chicago Fresh Eggs
January '74				59.50
February	50.25	46.75		53.75
March			9.31	52.35
April	52.55	46.25	9.70	49.00
May			10.65	49.95
June	52.90	47.95		45.90
July		47.95		
August	52.05	46.00		
October	50.75	44.15		
November			5.48	
December		44.47		


Trend — Cattle are Higher, Hogs are Higher, Potatoes are Lower, and Eggs are Mixed.

a-asked b-bid n-normal

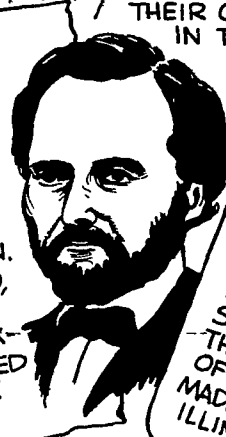
Markets provided by Commodity Dept., Reynolds Securities, Inc.

DID YOU KNOW?

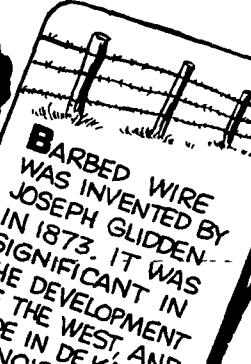
THE FIRST CATS
KNOWN TO LIVE WITH MANKIND, WERE TAMED BY EARLY EGYPTIANS. THESE FELINES KEPT RODENTS FROM OVERRUNNING THEIR GRAIN HOUSES. EGYPTIANS WORSHIPPED CATS AS GODS.



SAM COLT
WAS THE MAN WHO INVENTED THE REPEATING PISTOL IN 1836. HE OPENED A FACTORY IN HARTFORD, CONN. AFTER HE DIED, HIS COMPANY MADE THE SIX-SHOOTERS, USED ALL OVER THE WEST.



BARBED WIRE
WAS INVENTED BY JOSEPH GLIDDEN IN 1873. IT WAS SIGNIFICANT IN THE DEVELOPMENT OF THE WEST, AND MADE IN DE KALB, ILLINOIS.



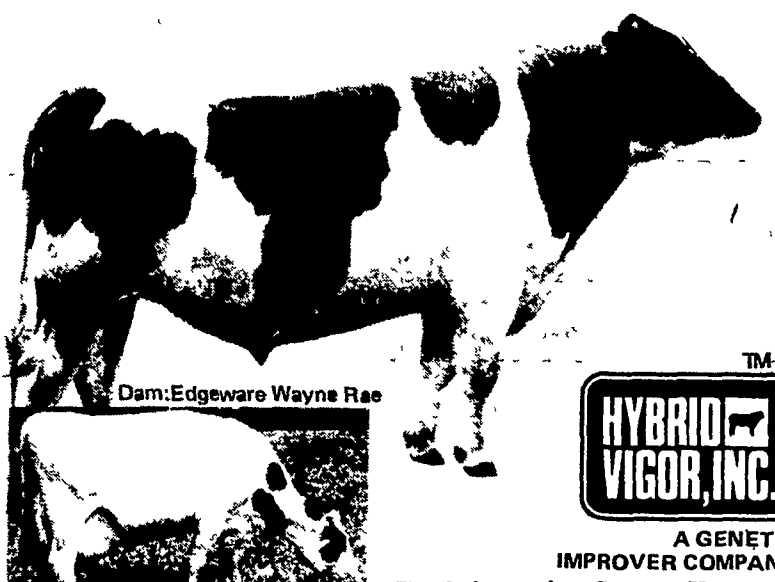
100-TON BULL HIGHEST P.D. IN NORTH AMERICA

(P. D. + 1920 MILK + 3.57% FAT)

Now you can have type, long life and production blended into one through the use of our new imported Canadian Bloodlines from 100-Ton Cow Families.

EDGEWARE COMMANDER RAY - 293681
Very Good-Superior Production
Sire, Born: 1/3/65, P.D. + 1920 Milk, 101 Daus. in 76 Herds with 987 hardmates with 85% REPT.
His dam, granddam and great granddam are 100-Ton Cows.
SEMEN NOW AVAILABLE

PEDIGREE OF COMMANDER RAY:
SIRE: Roybrook Reward 266007
Excellent & Class Extra. Son of Glenalcomb Supreme Dora (100-Ton Dam).
12 LACTS. 2X: 2132284 - 7824 - 3.67%
DAM: Edgeware Wayne Rae 1444793 (100-Ton Dam) - 10 LACTS. 2X: 213841-7888 - 3.69%. Maternal granddaughter of Ula Wayne Commander (100-Ton Dam).
10 LACTS. 2X: 219509 - 8147 - 3.17%.



Dam: Edgeware Wayne Rae



A GENETIC IMPROVER COMPANY

For Information Contact Your PENNA. DISTRIBUTOR

DANIEL M. ESH
Box 262, Harvest Dr. Road
Gordonville, Pa. 17529
Ph 717-354-5181

For Service in Morgantown, Pa. Area
Ph 215-286-9173

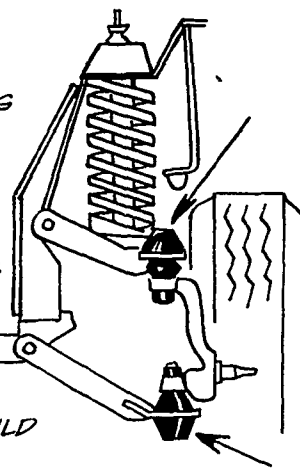
We are conducting A.I. Training Schools this winter
Contact Mr. Esh for Time and Place

SELL YOUR BUTCHER HOGS DIRECT
Now accepting Hogs on Grade and Yield basis.
Ezra W. Martin Co.
Garden Spot Quality Meats
Call AL SHAFFER At
Lancaster Pa
717 397 5113
Evenings (215) 779 3847



Automobile Service Tips

BALL JOINTS -
SUPPORT THE WEIGHT AND PROVIDE STEERING ABILITY THROUGH ALL PIVOTING AND TURNING OF THE WHEELS. LOOSENESS CAN DEVELOP. SEALS CAN BREAK. THEN CONTAMINATION GETS INTO BEARING AREAS. RESULT - ROAD WANDER, LOSS OF STEERING STABILITY AND PREMATURE TIRE WEAR. ALL WORN AND DAMAGED UNITS SHOULD BE REPLACED.



U. S. Inspected Livestock Slaughter

Estimated Daily Livestock Slaughter Under Federal Inspection

	CATTLE	HOGS	SHEEP
Week To Date	347,000	895,000	81,000
Same Period Last Week	294,000	696,000	83,000
Same Period Last Year	356,000	787,000	116,000