

Hog Prices

Lancaster Auction

Wednesday, December 26
Barrows and gilts 50-1.00 lower.
BARROWS AND GILTS: US 1-2 215-225 lb. 45.50-45.75; US 1-2 200-230 lb. 44.60-44.85; US 2-3 200-245 lb. 44.25-44.75; US 3-4 220-230 lb. 43.25-43.60; US 3-4 250-265 lb. 42.75-43.35.

New Holland Auction

Monday, December 24
Hog Receipts 1033.
Retail 45.50-47.75; US No. 2-3-4 44-45.50; Heavyweights 42-44; Sows 33.50-37; Boars 32-35.50.

Vintage Auction

Saturday, December 22
Hog Receipts - 846 Market \$3. to \$3.50 higher.
US 1-2 195-230 lbs. 45.60-46; US 1-3 200-240 lbs. 44.85-45.50; US 2-3 240-260 lbs. 43.75-44.75; few 2-4 150-160 lbs. 40.50-42.
Sows US 1-3 200-585 lbs. 30-34; Boars 29.85-35.

Wednesday, December 26
Hog Receipts 528 Barrows and Gilts 25 to 50 lower, Spots \$1.00 lower.
US 1-2 200-240 lbs. 44.50-45.50; US 1-3 200-250 lbs. 43.75-44.50; US 1-3 300-550 lbs. 32.35; Boars 29-31, Lightweights 33-36.

Indianapolis Auction

HOGS: 3000.
Barrows and gilts very uneven, opening steady to 25 lower than Wednesday's close, later around 50 to 1.00 lower than Wednesday's close.
BARROWS AND GILTS: US 1-2 200-230 lb. 42.00-42.75, late 42.00; US 1-3 200-240 lb. 41.00-42.25 late 41.00-41.75.

Peoria Auction

HOGS: 6000.
Barrows and gilts opening 2 50 lower than yesterday's high time. Supply presently about 600 head under the estimate.
BARROWS AND GILTS: US 1-2 200-230 lb. 40.50-41.00; US 1-3 200-240 lb. 40.00-40.50.

St. Louis Auction

HOGS: 7500.
Barrows and gilts 1.00-1.50 lower.
BARROWS AND GILTS: US 1-3 200-220 lb. 41.50-42.00; 220-250 lb. 40.00-42.00.

Farm Calendar

Thursday, January 3
12:30 p.m. - County Tobacco Show, Farm and Home Center.

7:30 p.m. - Ephrata Adult Farmer Officers meeting, Ephrata Vo-Ag Department.
7:45 p.m. - Penn Manor Adult Farmer meeting. Topic: "Pennsylvania Clean Stream Law and Your Farm." Penn Manor High School Ag Department.

Friday, January 4
7 p.m. - Fulton Grange Centennial banquet at Memorial United Methodist Church, Quarryville.

National Farmers Union Convention, Harrisburg, January 4-5.
Pennsylvania Egg Marketing Association meeting.
The 58th Pennsylvania Farm Show begins Monday, January 7.

Omaha Cattle

Thursday, December 27
Compared with last week's close: Slaughter steers mostly 1 00 higher, heifers 50-75 higher. Cows closed 50-1.00 higher, bulls fully steady. Small feeder supply mostly 50 higher, supply mainly partly fattened two-way steers.

Three day receipts in holiday shortened week 13,900 as compared 19,700 previous week and 21,000 a year ago. Slaughter steers 43 percent, heifers 37 percent, cows 10 percent and feeders 7 percent. Fed Cattle prices pushed higher for the third consecutive week under good demand by all buying interests. Demand particularly broad at midweek with buyers quite anxious to acquire numbers for immediate slaughter. Prices upturns firmly supported by advancing prices in the wholesale carcass trade. Canadian buyers were competitive for 1000-1200 pound steers yield grade 2-3. Overall finish steers and heifers quite attractive with moderate showing high-choice and Prime included, many cattle again carried considerable mud.

STEERS: Approximately 13 loads high-choice and Prime 1049-1208 pounds yield grade 3-4 42.25. Several loads Choice yield grade 2-3 1050-1125 42.25-42.50. Bulk Choice 1000-1200 2-4 41.00-42.00. Choice 1200-1300 3-4 40.00-41.50, two loads 1175-1300 3-4 carrying moderate amount of mud 39.50-40.00. Mixed Good and Choice 975-1250 40.00-41.25. Good 38.25-40.00, Standard and low-Good 37.00-38.25.

Average cost of slaughter steers two days in holiday shortened week 40.96 average weight 1151 pounds as compared 39.52 and 1173 pounds previous week and 37.61 and 1152 pounds a year ago.

HEIFERS: Eleven loads high-choice and Prime 893-1100 pounds yield grade 3-4 40.75-41.00. Bulk Choice 850-1075 2-4 39.50-40.50. Mixed Good and Choice 800-1000 38.50-39.50. Good 36.50-38.50. Standard and low-Good 35.00-36.50.

COWS: At the close, Utility and Commercial 31.50-34.00, a few Utility 34.50-35.00. Canner and Cutter 29.00-32.00. Mixed Cutter and low-Utility 32.25-32.75.

BULLS: Yield grade 1 & 2 1400-1800 pounds 38.00-40.00, a few 40.50-41.00.

FEEDERS: Prices mostly 50 higher. Outshipments approximately 900 head as compared 1700 previous week.

STEERS: Two loads Choice 480 pounds 54.00, load Choice 515 52.00. Part loads Choice 875-935 42.15-43.00. High-Good and Choice 925-1125 41.00-42.00.

HEIFERS: Two loads Choice 470 pounds 50.00. Load Choice 599 45.00, Good and Choice 637-867 38.50-40.00.

Green Dragon Hay

December 21, 1973
23 loads of Hay and 10 loads of Straw sold as follows:
Alfalfa, 2 loads 83.00-90.00; Timothy, few loads 32.00-45.00, Mixed hay 40.00-57.00; Stubble hay, one load at 31.00, Straw 35.00-42.00; Corn, 2 loads 61.00 and 68.50

SELL ★ YOUR BUTCHER HOGS DIRECT
Now accepting Hogs on Grade and Yield basis.
Ezra W. Martin Co.
Garden Spot Quality Meats
Call AL SHAFFER At
Lancaster Pa
717 397 5113
Evenings (215) 779 3847

Futures Trading

(Closing bids as of Thursday, December 27)


	Chicago Cattle	Chicago Hogs	New York Maine Potatoes	Chicago Fresh Eggs
January '74				59.25
February	47.70	43.90		52.06
March			8.93	49.85
April	43.40	42.65	9.38	47.80
May			10.19	45.45
June	49.40	44.45		45.50
July		45.25		
August	48.85	43.60		
October	48.10	41.80		
November			5.35	
December		41.80		

Trend — Cattle are Stronger, Hogs are Stronger, Potatoes are Lower and Eggs are Higher.

a-asked b-bid n-normal
Markets provided by Commodity Dept., Reynolds Securities, Inc.

DID YOU KNOW?

THE LARGEST CAR EVER BUILT
THE BUGATTI "ROYALE"
(FOR PRIVATE ROAD USE)



ONLY SIX OF THESE CARS WERE MADE. THIS FANTASTIC ITALIAN AUTO IS 22 FEET LONG! FIRST BUILT IN 1927, THESE 8-CYLINDER JOBS HAVE HOODS OVER 7 FEET IN LENGTH. IF YOU ARE IN MICHIGAN, YOU CAN FIND ONE AT THE FORD MUSEUM IN DEARBORN. A LOS ANGELES FIRM PLANS TO BUILD 100 BUGATTIS TO SELL FOR \$40,000 TO \$50,000 EACH!

HENRY DAVID THOREAU ... LIVED AS A HERMIT 2 YEARS AT WALDEN POND. HE REBELLED AGAINST INTRUSIONS OF GOVERNMENT AND SOCIETY ON A MAN'S LIFE. HE DIED AT 44 OF TB. ASKED IF HE HAD MADE HIS PEACE WITH GOD, HE REPLIED "I WASN'T AWARE WE EVER QUARRELED."

THE OLDEST NATIONAL ANTHEM IS JAPAN'S KIMIGAYO. IT'S WORDS DATE BACK TO THE 19th CENTURY

Definition: SOLILOQUIZE: TO TALK TO ONE'S SELF.

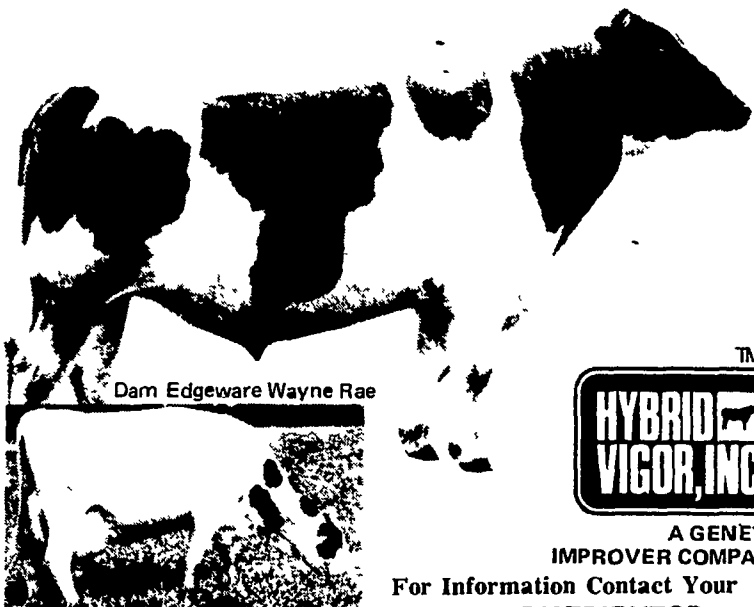
100-TON BULL HIGHEST P.D. IN NORTH AMERICA

(P. D. + 1920 MILK + 3.57% FAT)

Now you can have type, long life and production blended into one through the use of our new imported Canadian Bloodlines from 100-Ton Cow Families.

EDGEWARE COMMANDER RAY - 293681
Very Good-Superior Production Sire Born. 1/3/65, P.D. + 1920 Milk 101 Daus in 76 Herds with 987 herdmates with 85% REPT. His dam, granddam and great granddam are 100-Ton Cows
SEMEN NOW AVAILABLE

PEDIGREE OF COMMANDER RAY:
SIRE: Roybrook Reward 266007 Excellent & Class Extra. Son of Glenalcomb Supreme Dora (100-Ton Dam) 12 LACTS. 2X 2132284 - 7824 - 3.67%
DAM: Edgeware Wayne Rae 1444793 (100-Ton Dam) - 10 LACTS. 2X:213841-7888 - 3.69%. Maternal granddaughter of Ula Wayne Commander (100-Ton Dam). 10 LACTS 2X 219509 - 8147 - 3.17%.



HYBRID VIGOR, INC.
A GENETIC IMPROVER COMPANY

For Information Contact Your PENNA. DISTRIBUTOR

DANIEL M. ESH
Box 262, Harvest Dr. Road
Gordonville, Pa. 17529
Ph. 717-354-5181
For Service in Morgantown, Pa. Area
Ph 215-286-9173

We are conducting A.I. Training Schools this winter
Contact Mr. Esh for Time and Place

The E Era to 2,000 A.D.

(NEWS OF EARTH, ENVIRONMENT, ENERGY)



Our Water

There are between 30,000 and 40,000 municipal water supply systems in this country, large and small. Many were not designed to cope with present-day raw water quality. These systems were designed, primarily, to remove coliform bacteria from the relatively clean water of earlier days. The principal concerns at that time were typhoid, cholera and dysentery. The first two of these diseases now have been routed in the U.S. for the most part. Today, new threats to public health are appearing in drinking water while much of the apparatus to meet these threats remains tuned to contamination problems of an earlier era.

Our national water resources are finite but our demand for water continues to rise steadily. This fact, plus the increasing volume, variety, and complexity of pollutants that enter surface and ground water, pose problems. Federal standards for potable water were first issued in 1914 in response to legislation designed to prevent the interstate spread of communicable diseases. The standards were modified and expanded a number of times. Those in use in recent years are the 1962 U.S. Public Health Service Drinking Water Standards. When the Environmental Protection Agency (EPA) was established in December, 1970, it took responsibility for the Federal standard-setting authority, and is revising the 1962 standards in order to make our water safer.

U. S. Inspected Livestock Slaughter

Estimated Daily Livestock Slaughter Under Federal Inspection

	CATTLE	HOGS	SHEEP
Week To Date	307,000	673,000	76,000
Same Period Last Week	452,000	1,200,000	113,000
Same Period Last Year	369,000	900,000	106,000