

**LANCASTER COUNTY  
DHIA  
MONTHLY  
REPORT**

A Registered Holstein cow owned by John M. Harnish, 1036 Beaver Valley Pike, Lancaster, completed the highest 305 day lactation. Meg produced 23,941 pounds of milk, 918 pounds of butterfat with a 3.8 percent test. Second high lactation was completed by a Registered Holstein cow owned by Paul B. Zimmerman, RD1, Ephrata. Franco produced 18,970 pounds of milk, 888 pounds of butterfat with a 4.7 percent test in 305 days.

The herd of Amos & Eleanor Hershey, RD1, Kinzers, had the highest daily butterfat average. This herd of 27.0 Registered and Grade Holstein cows averaged 45.8 pounds of milk, 2.02 pounds of butterfat with a 4.4 percent test. The herd of Earl N. Landis, RD1, Manheim, placed second. This herd of 48.5 Registered and Grade Holstein cows averaged 53.0 pounds of milk, 1.98 pounds of butterfat with a 3.7 percent test.

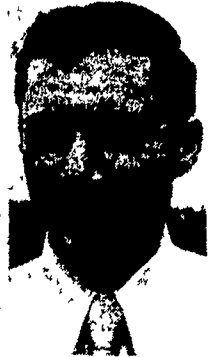
**FIRST 305 DAYS OF LACTATION  
WITH 670 OR MORE POUNDS OF BUTTERFAT.**

Owner - Name	Breed	Age	Days	Milk	Test	Fat
<b>John M. Harnish</b>						
Meg	RH	8-5	305	23,941	3.8	918
Lisa	RH	5-0	305	17,782	4.6	817
Gladys	RH	3-8	305	18,730	3.7	695
Aleida	RH	4-9	301	15,712	4.3	672
<b>Paul B. Zimmerman</b>						
Franco	RH	4-4	305	18,970	4.7	888
<b>Lloyd Wolf</b>						
Posch	RH	10-0	305	17,734	4.9	866
Sally	RH	7-1	305	18,113	4.0	717
<b>Samuel M. Augsburg</b>						
Inka	RH	8-10	305	22,769	3.7	838
<b>LeRoy M. Oberholtzer</b>						
Teresa	RH	7-6	305	19,982	4.2	838
<b>J. Rohrer Witmer</b>						
Lalita	RBrSw	4-10	305	19,380	4.3	828
Till	RBrSw	8-3	305	17,180	4.3	735
<b>Robert E. Landis</b>						
Pamela	RH	6-11	305	21,983	3.7	822
Cindy	RH	5-3	305	19,396	3.9	765
<b>Maurice F. Welk</b>						
Dora	GrH	4-1	305	16,819	4.9	818
Nettie	RH	3-5	305	17,806	4.5	804
<b>Samuel F. King</b>						
Mattie	GrH	5-6	305	21,939	3.7	815
<b>Sam &amp; Allen Kreider</b>						
Molly	GrH	8-1	287	20,673	3.9	815
<b>Pure Spring Farm</b>						
Star	GrH	7-2	305	20,477	4.0	809
<b>Galen W. Crouse</b>						
Ida	RH	7-4	305	25,445	3.2	809
Nig	RH	9-7	305	19,278	3.8	740
Greta	RH	5-8	305	17,006	4.2	720
Sadie	RH	7-1	305	19,053	3.8	718
<b>R. Edwin Harnish</b>						
Melody	RH	6-0	305	20,790	3.9	803
<b>Robert F. &amp; Joan B. Book</b>						
Doris	RH	3-10	305	18,478	4.3	801
Kerby	RH	3-3	305	21,307	3.3	705
Patsy 1	RH	10-5	274	18,057	3.7	676
<b>J. Mowery Frey Jr.</b>						
Matilda	RH	6-2	305	21,747	3.7	799
Monica	RH	9-3	305	19,590	3.7	729
<b>Robert C. Groff</b>						
Pansy	RH	8-10	305	18,998	4.2	791
<b>Ben K. Stoltzfus</b>						
Rachel 3	RH	5-3	305	19,254	4.1	790
Reno	GrH	4-11	305	17,340	4.2	726
<b>LeRoy S. Smucker</b>						
Bonnie	RH	11-9	305	18,170	4.3	787
Hope	RH	7-5	305	19,906	3.4	678
<b>David D. Zimmerman</b>						
Darlene	GrH	9-4	305	20,677	3.8	781
Misty	GrH	10-0	305	15,381	4.7	723
Marie	RH	7-3	305	17,205	3.9	676
<b>Elan J. Stoltzfus</b>						
Rena	RH	7-6	305	19,895	3.9	780
<b>Nelson E. Martin</b>						
Becky	RH	7-1	305	19,034	4.1	775
Lass	RH	2-7	305	16,295	4.2	688
Marcell	RH	3-4	305	17,791	3.8	670
<b>Ben S. Stoltzfus</b>						
Pearl	RH	4-2	305	17,283	4.5	772
<b>Ernest J. Sauder</b>						
Faith	RH	7-0	305	16,168	4.8	771

Lisa	RH	6-3	287	15,910	4.4	699
<b>J. Arthur Rohrer &amp; Sons</b>						
Angel	GrH	6-8	305	17,802	4.3	769
Felice	GrH	5-6	305	20,109	3.7	747
<b>Earl L. Hershey</b>						
114	RH	8-0	305	16,286	4.7	767
<b>John U. Glick</b>						
Whitie	RH	8-1	305	20,005	3.8	766
<b>J. Harold Musser &amp; Son</b>						
38	GrH	3-5	303	20,158	3.8	765
37	GrH	6-2	305	19,275	3.9	751
46	GrH	3-1	305	17,903	4.0	717
<b>John M. Smucker</b>						
Daisy	RH	7-3	305	21,343	3.6	762
<b>H. Landis Weaver</b>						
Betsy	RH	3-8	305	19,807	3.8	761
<b>G. M. Weaver</b>						
3	GrH	4-8	305	18,616	4.1	761
<b>Henry E. Kettering</b>						
Della	RH	5-5	305	18,274	4.2	761
Cinda	RH	6-9	293	16,945	4.4	749
Apollo	RH	3-9	305	17,270	3.9	681
Lea	RH	3-11	305	17,826	3.8	678
<b>Irene H. Sauder</b>						
Fern	GrH	5-9	305	16,926	4.5	761
Connie	RH	5-3	305	17,868	4.0	716
<b>Emanuel S. Smucker</b>						
Honey	RH	6-0	305	14,674	5.2	756
<b>J. Ray Ranck</b>						
Sunbeam	GrH	9-1	305	17,757	4.2	753
<b>Lester M. Weaver</b>						
28B	RH	5-7	305	21,948	3.4	750
5A	RH	5-0	305	17,859	4.0	723
<b>John E. Kreider</b>						
Lizzy	RH	6-6	305	19,512	3.8	750
Jo	RH	6-11	305	16,888	4.4	741
<b>Ezra M. Martin</b>						
Ruth	RH	4-6	305	15,479	4.8	750
Carol	RH	12-0	303	16,108	4.3	685
<b>Edgefield Farms</b>						
Starlit	RH	6-5	305	17,685	4.2	749
Charm	RH	4-11	305	17,966	4.0	718
<b>Dan S. Stoltzfus</b>						
Mitzi	RH	5-4	284	17,675	4.2	749
<b>Daniel M. Stoltzfus</b>						
Honey	RH	5-1	305	18,751	4.0	747
<b>B. H. &amp; D. R. Hershey</b>						
Rena	RH	4-11	305	19,499	3.8	746
<b>James M. Eshelman</b>						
Misty	RH	5-0	305	20,603	3.6	744
<b>Samuel F. Long</b>						
Doodle	RH	4-3	305	18,959	3.9	743
Mary	RH	5-8	305	17,513	4.2	730
<b>Conewago View Farms</b>						
Hilma	GrH	6-2	305	19,394	3.8	742
<b>S. R. Shellenberger</b>						
Tami	RH	3-5	305	18,912	3.9	742
<b>John Omar Stoltzfus</b>						
Lena	RH	8-5	305	21,263	3.5	740
Mable	RH	4-3	302	16,780	4.1	688
Anna	RH	7-9	305	16,811	4.0	677
<b>Amos M. Stoltzfus</b>						
Laura	RH	4-7	305	21,768	3.4	739
<b>Jacob S. Dienner</b>						
Martha	RH	6-4	305	21,701	3.4	735
<b>Lancaster Mennonite Hospital</b>						
Unellie	RH	2-1	305	20,059	3.7	734
<b>David W. Sweigart</b>						
21	GrH	8-3	305	18,157	4.0	734
Tillie 19	RH	5-4	305	17,472	4.0	705
<b>Herbert &amp; Rhelda Royer</b>						
Jody	RH	5-3	305	22,331	3.3	732
Poppy	RH	3-6	305	16,905	4.0	677
Mindy	RH	3-3	301	16,729	4.0	675
<b>Quelletal Farm</b>						
Oneil 84	RH	6-7	305	19,470	3.8	731
90	GrH	4-3	305	19,934	3.6	722
<b>Clair M. Hollinger</b>						
Honey 42	RH	3-9	305	15,653	4.7	730
<b>Melvin M. Groff</b>						
Bertie	RH	5-1	305	20,688	3.5	729
<b>Harry H. Ranck Jr.</b>						
Minnie	RH	5-1	305	22,291	3.3	728
<b>Arthur D. Wenger</b>						
Rachel	RH	4-3	305	20,044	3.6	728
<b>John S. Yost</b>						
Maiden	RH	5-4	305	16,233	4.5	727
<b>Robert W. Ulrich &amp; Son</b>						
Ruth	RJ	4-2	305	12,404	5.9	727
Bitsy	GrJ	6-3	305	13,370	5.4	721
<b>Harry L. Troop</b>						
Bunny	RH	6-3	305	16,638	4.4	725
<b>Marvin S. Nolt</b>						
8	GrH	5-4	305	19,043	3.8	722
<b>Quarryville Presbyterian Home &amp; Vernon Weaver</b>						
9	RH	6-3	305	20,231	3.6	721

(Continued On Page 13)

**FACTS  
FOR  
DAIRYMEN**



by  
N. Alan Bair  
Assistant  
County  
Agricultural  
Agent

**High Production Does Pay**

Over the past few months the question has been asked many times as to whether feeding for maximum production was profitable with the high cost of protein. The answer is a big "yes" according to our DHIA records for the past year. High production per cow is still profitable even with higher feed cost.

The calculations are rather simple to come up with some averages for the state, and even easier for an individual cow or groups of cows in your herd. We valued milk at \$7.00 per cwt. for the year and all costs other than feed and labor at \$290 per cow. These other costs include depreciation, interest, taxes, repairs, investment and veterinary expense.

The results are not too surprising. At a 9,000 pound production level the labor return was \$15 or about 19 cents per hour. At the 13,000 pound production level the return for labor was \$220 or \$2.75 per hour. At the 17,000 pound production level labor return was \$420 per cow or \$5.25 per hour. Before jumping to too many conclusions or making too many excuses, sit down and work it out for your herd.

**THE END AND  
THE BEGINNING**

As these last few days of the year slip away almost unnoticed in our hurried lives, we should spend a few quiet moments reflecting about the past and planning for the future.

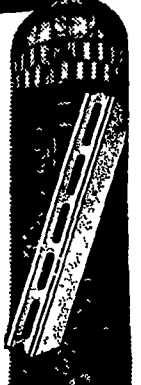
Our past experience is a great teacher and we are all pretty good after-the-game quarterbacks. But all the experience and hindsight in the world is useless unless we apply what we have learned to the future.

As you analyze your farm business records make concrete plans for the future that reflect what you have learned from your past experience. Remember that an idea is of no value until it is put into practice.

**• MORE MILK • MORE MEAT  
• MORE PROFIT  
WITH**

**MADISON SILOS**

- Feed high-quality, nutritious, corn and grass silage all year for more milk, more meat and more profit
- Low original cost
- Low upkeep cost
- More than 60,000 Madison Silos in use



**MADISON SILOS**

Div. Chromalloy American Corp.  
1070 Steinmetz Rd.  
Ephrata, Penna. 17522  
Ph. 733-1206

**LOCAL DEALERS**

- Frank Snyder  
Akron 859-2688
- Caleb Wenger  
Quarryville 548-2116
- Landis Bros. Inc.  
Lancaster 393-3906
- Carl L. Shirk  
Lebanon 867-3741
- Sollenberger Farm Supply  
Centerport, Pa.  
Ph. 215-926-7671