

Hog Prices

Lancaster Auction

Wednesday, December 19
Barrows and gilts 2.00-3.00 higher.
BARROWS AND GILTS: US 1 210-240 lb. 47.00; US 1-2 200-240 lb. 45.75-46.00; US 2-3 195-255 lb. 45.25-45.75.

Vintage Auction

Saturday, December 15
HOGS 1251: Compared with last Saturday's market. Barrows & Gilts \$1 to \$2 higher. US No. 1-2 200-245 lbs. 43.85-44.35, 2 lots 44.75, No. 1-3 195-240 lbs. 43.00-43.75, No. 2-3 190-260 lbs. 42.10-42.85, No. 2-4 295-340 lbs. 36.00-38.75, No. 2-4 110-165 lbs. 39.00-40.60. SOWS: US No. 1-3 212-255 lbs. 35.00-36.60, No. 1-3 345-525 lbs. 31.30-33.25. Boars 115-275 lbs. 32.00-40.00.

Wednesday, December 19
HOGS 450: Compared with last Wednesday's market. Barrows & Gilts unevenly steady. US No. 1-2 200-240 lbs. 45.00-46.50, few to 46.75, No. 1-3 200-250 lbs. 44.00-45.00. SOWS: US No. 1-3 300-550 lbs. 30.00-34.00. Boars: Light 34.00-38.00.

Lancaster Market

Monday, December 17
Barrows and gilts very uneven, averaging steady.
BARROWS AND GILTS: US 1-2 200-240 lb. 44.00-45.00; few US 1 200-240 lb. 45.00-45.50; US 2-3 190-255 lb. 42.00-43.50.

xxx

Self-trust is the first secret of success.

SELL YOUR BUTCHER HOGS DIRECT
Now accepting Hogs on Grade and Yield basis.
Ezra W. Martin Co.
Garden Spot Quality Meats
Call AL SHAFFER At
Lancaster, Pa
717-397-5113
Evenings (215) 779-3847



New Holland Auction

Monday, December 17
HOGS 760: Compared with last Monday's market. Barrows & Gilts Mostly \$1 to \$2 higher. US No. 1-2 200-240 lbs. 46.00-47.00, No. 1-3 200-245 lbs. 44.50-46.00, No. 2-3 220-260 lbs. 42.00-44.50, No. 2-4 160-190 lbs. 42.00-44.50. SOWS: US No. 1-3 300-550 lbs. 31.50-36.00. Boars 30.50-33.60.

Lebanon Valley Auction

Tuesday, December 18
260 Hogs
Barrows & Gilts 50 cents to \$1 higher. US 1-3 200-235 pounds 43.85-44.35, 2-3 200-255 43.00-43.85, lot 2-4 250 42.35. Few US 1-3 400-500 pounds sows 34.60-35.25. Few Boars 33.00-35.00.

9 Feeder Pigs
Not enough of any one grade to establish a market.

St. Louis Auction

HOGS: 1600.
Barrows and gilts about steady on limited sales under 240 lb.
BARROWS AND GILTS: US 1-3 200-240 lb. 43.00-44.00.

Peoria Auction

HOGS: 2000.
Trading very slow, market not established.
BARROWS AND GILTS: US 1-3, few sales 200-240 lb. 41.50-42.00.

Indianapolis Auction

HOGS: 1000.
Barrows and gilts 1.00 higher, trading active.
BARROWS AND GILTS: US 1-2 200-230 lb. 44.00-44.25; US 1-3 200-240 lb. 43.00-44.00; US 2-3 240-260 lb. 42.00-43.00.

Green Dragon Hay

December 14
54 loads of hay including: Alfalfa, few loads 47.00-68.50, one load at 91.00; Timothy 31.00-43.00; Mixed hay 31.00-50.00, one load at 58.50; Stubble hay, two loads 33.50 and 35.00.
16 loads straw 39.00-48.50.
Corn, six loads 68.00-70.00.
Oats, one load 1.45 per bushel.

New York Dressed Meats

Thursday, December 20
Daily distributive - less than carlot meat trade.

Compared with Wednesday: Steer and heifer beef closing out at high quotation for week. Small stock classes steady, pork loins and butts \$5.00 or more advanced, picnics \$2.00 higher, spareribs steady, hams \$2.00 lower.

Supplies relatively small in all divisions. Moderately broad demand for beef hinds, rounds and ribs along with pork loins. Current receipts of fresh meats will be well cleared before close of long pre-holiday weekend.

Steer Beef

Prime 600-900 pounds 70.00; Choice 600-700 69.00; 700-800 69.00; 800-900 66.00. Good 500-800 65.00.

Heifer Beef

Choice 500-700 pounds 69.00.
Calf (Skin Off)
150-350 pounds
Choice 97.00-100.00; Good 86.00-95.00; Standard 80.00-86.00.

Veal (Skin Off)

Choice 90-150 pounds 112.00-115.00; Good 60-90 100.00-107.00; Standard 60-120 85.00-90.00.

Lamb

Choice and Prime 30-55 pounds 78.00; 55-65 74.00.

Choice Beef Cuts

Hinds (steer) 145-190 pounds 79.00-81.00; Arm Chucks 90-105 61.00-64.00; Ribs (7-rib) 34-40 85.00-88.00; Loins (trmd) 50-70 96.00-100.00; Rounds (steer) 70-95 85.00-88.00; Full Plates 42.00; Hinds (heifer) 120-170 77.00-79.00.

Fresh Pork Cuts

Loins (regular) 8-14 pounds 86.00-88.00; 14-17 84.00-86.00; Picnics (regular) 4-8 56.50-59.50; Boston Butts 4-8 70.00-73.00; Spareribs 3 pounds down 72.00-76.00; Hams (skinned) 14-17 79.00-81.00; 17-20 74.00-76.00.

Lebanon Valley Auction

Tuesday, December 18
207 Cattle

Compared with last Tuesday's market, slaughter cows \$2 to \$4 higher. Slaughter bullocks 75 cents to \$1 higher. Few Choice 1000-1200 pounds slaughter steers 42.10-43.85, few Good 39.50-43.00, few Standard 39.10-41.35. Individual Choice slaughter heifers at 43.50, few Good 38.75-40.00. Utility & High Dressing Cutter slaughter cows 36.00-38.60, Cutters 34.00-36.00, Canners 31.25-34.00, Shells down to 29.00. Few Choice slaughter bullocks 47.10-49.25, Good 43.85-45.75, Standard 41.75-44.00, Utility 36.50-39.50. Yield Grade 1-2 1200-1550 pounds slaughter bulls 43.00-44.85.

200 Vealer Calves

Vealers grading Good \$4 lower, Utility & Standard \$1 to \$2 lower. Two Prime vealers 70.00, few Choice 64.00-67.00, Good 56.00-61.00, Standard 50.00-55.00, Utility 90-120 pounds 39.00-45.00, 70-85 35.00-39.00. Farm calves, Holstein bulls 90-120 44.00-56.00; Holstein heifers 90-130 50.00-70.00.

Regional Hay Prices

Monday, December 17, 1973
(All hay No. 2 and better prices paid by dealers at the farm price per ton.)

Hay & Straw steady to strong.	
Alfalfa	55.00-60.00
Mixed Hay	40.00-50.00
Timothy Hay	30.00-40.00
Straw	35.00-40.00
Mulch	15.00-25.00

U. S. Inspected Livestock Slaughter

	Estimated Daily Livestock Slaughter Under Federal Inspection		
	CATTLE	HOGS	SHEEP
Week-to-date	459,000	1,168,000	122,000
Same period last week	485,000	1,160,000	117,000
Same period last year	470,000	1,209,000	138,000

Futures Trading

(Closing bids as of Thursday, December 20)

	Chicago Cattle	Chicago Hogs	New York Maine Potatoes	Chicago Fresh Eggs
December	41.30	44.45		
January '74				56.20
February	46.35	43.90		48.60
March			8.58	47.20
April	48.25	43.00	8.95	46.15
May			9.82	43.75
June	48.65	44.90		44.90
July		45.70		
August	48.10	44.60		
October	47.25	42.40		
November			5.42	
December		42.40		

Trend — Cattle are Lower, Hogs are Lower, Potatoes are Mixed, and Eggs are Mixed.

a-asked b-bid n-normal
Markets provided by Commodity Dept., Reynolds Securities, Inc.

Oklahoma City

Thursday, December 20
Estimated Receipts 1,500
Same Day Last Week 6,633
Same Day Last Year 5,615

Salable receipts sharply curtailed due to storm conditions over most of the marketing area yesterday resulting in hazardous road conditions. Trading moderately active on the limited supply, feeder cattle and calves somewhat uneven, averaging about steady; supply mainly Good and Choice 350-750 pound steers and 300-625 pound heifers; Moderate attendance buyers.

FEEDER STEERS: Small lots Choice, few Prime 350-400 pounds 59.90-60.80; 400-475 54.25-59.90; 500-600 49.00-54.00; 640-730 47.00-49.90, small lot 871 at 45.40; Mixed Good and Choice 300-500 51.75-54.75; 500-625 46.25-48.50, small lot 794 at 45.00; Good 300-500 45.25-49.75; few 600-735 41.25-43.00.

HOLSTEIN STEERS: Good 416-481 41.75-44.00; 562-937 37.00-41.30.

FEEDER HEIFERS: Choice, few Prime 275-356 pound 47.00-48.75; 400-500 43.25-45.75; 500-600 42.75-43.60; few 600-625 40.50-43.00; Mixed Good and Choice 300-500 40.75-45.25; Good 500-700 34.00-39.50.

For the week: Compared to late last week, feeder cattle and calves strong to mostly 1.00 higher with some sales on choice offerings 2.00 higher; Cow numbers moderately reduced and fully 2.50-4.00 higher; Bulls in small supply and 1.50-2.00 higher. Salable receipts near 7,400 head compared to 14,833 last week and 14,452 the comparable week a year ago. Cows 28 percent cattle receipts; feeders 73 percent of total.

Great Lakes

The biggest of the Great Lakes, the well-named Superior, accounts for nearly a third of the total 31,700 square miles. It holds 2,935 cubic miles of water, and its depth at one point drops to 1,333 feet, making it the deepest of the five.

Peoria Cattle

Thursday, December 20
CATTLE: Receipts this week 5600, last week 8000, and last year 6700. Compared with last weeks close, slaughter steers fully 50, instances 1.00 higher. Slaughter heifers fully 50 higher. Cows 1.00 - instances 2.00 higher. Bulls fully steady.

Receipts 65 percent slaughter steers, 25 percent heifers and the balance mostly cows.

SLAUGHTER STEERS: Choice and Prime 1150-1270 pounds yield grade 3-4, 38.50-40.00, late 39.00-40.00. Three loads Choice and Prime 1320-1370 4-5, 36.50-37.00. Choice 950-1200 2-4, 39.50-41.50; Load 42.00. Choice 1200-1300 3-4, 39.00-39.50. Mixed Good and Choice 900-1250 38.00-39.50. Good 37.00-38.00. Load Standard and Good Holsteins 36.50.

SLAUGHTER HEIFERS: Choice and Prime 900-1100 pounds yield grade 3-4, 38.00-39.50. Choice and Prime 1000-1175 4-5, 36.00-37.00. Choice 800-1050 2-4, 38.50-40.25. Couple loads 40.50. Mixed Good and Choice 750-1100 37.50-38.50. Good 36.00-37.50.

COWS: Utility and Commercial 27.00-33.00. High dressing Utility 33.50-34.00. Cutter 26.00-31.00. Canner 24.00-26.00.

BULLS: Yield grade 1-2, 1100-1800 pounds 37.00-40.00. Individual yield grade 1, 42.00.

Local Grain

Thursday, December 20
These prices are made up of the average prices quoted by five participating local feed and grain concerns. It should be noted, however, that not every dealer handles each commodity. All prices are per bushel except ear corn which is per ton.

The average local grain prices quoted Thursday, December 20, 1973, are as follows:

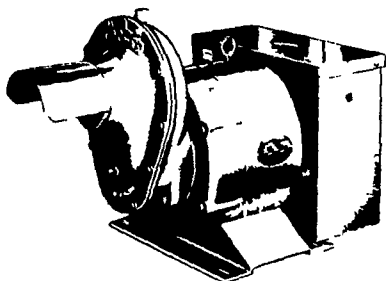
	Bid+	Offered+
Ear Corn, New	59.00	68.00
Shelled Corn	2.86	3.06
Oats, Local	1.15	1.60
Oats,		
Western	1.74	1.88
Barley	2.35	2.57
Wheat	4.24	4.62
Soybeans	5.43	5.85

+Bid is the price the dealer will buy from the farmer delivered to the mill. Offered is the price the dealer will sell for at his mill

WINPOWER



TRACTOR DRIVEN ALTERNATORS



WORLD'S LARGEST MFG. OF TRACTOR-DRIVEN ALTERNATORS with 45 years continuous experience to give you the best quality unit for long years of service, and to protect your family against huge losses due to power outages, and brown outs.

BUY OR LEASE YOUR WINPOWER ALTERNATOR TODAY
CALL 717 733-7911
FOR AN APPOINTMENT ON YOUR FARM
L. J. EDWARDS
FARM SALES MGR.



ELECTROMECH

ELECTROMECHANICAL SERVICE

ROUTE 222, EPHRATA, PA. 17522

PHONE (717) 733-7911

LP-NATURAL GAS
GASOLINE
DIESEL
ENGINE GEN.
SETS TO
200,000 WATTS

ELECTRIC MOTOR • GENERATOR • POWER TOOL SPECIALISTS