

Hog Prices

Lancaster Auction

Wednesday, Dec. 12
Barrows and gilts 50-1.00 higher.
BARROWS AND GILTS: US 1 210-235 lb. 44.75-45.50; US 1-2 200-240 lb. 43.75-44.00; US 2-3 200-250 lb. 43.00-43.50; US 3-4 240-265 lb. 42.10-42.75.

Vintage Auction

Saturday, December 8
HOGS 958: Compared with last Saturday's market. Barrows & Gilts: mostly \$1 to \$1.50 lower. US No. 1-2 200-240 lbs. 42.00-43.35, few to 43.50, No. 1-3 200-250 lbs. 41.00-42.00. SOWS: US No. 1-3 34.00-36.00. Boars 31.00-33.50.

December 12
HOGS 400: Compared with last Wednesday's market. Barrows & Gilts: mostly \$1.50 to \$2 higher. US No. 1-2 200-240 lbs. 45.00-46.35, No. 1-3 200-250 lbs. 44.50-45.00. SOWS: US No. 1-3 300-550 lbs. 30.00-33.00. Few Boars 31.00.

Lancaster Market

Monday, December 10
Barrows and gilts 50-1.00 lower.
BARROWS AND GILTS: US 1 195-235 lb. 43.50-44.00; US 1-2 195-240 lb. 42.75-43.25; US 2-3 190-250 lb. 42.00-43.00; US 3-4 255-270 lb. 40.00-41.50.

New Holland Auction

Monday, December 10
HOGS 1031: Compared with last Monday's market.
Barrows & Gilts: mostly 25c

SELL YOUR BUTCHER HOGS DIRECT



Now accepting Hogs on Grade and Yield basis.

Ezra W. Martin Co.
Garden Spot Quality Meats
Call AL SHAFFER At Lancaster, Pa 717-397-5113
Evenings (215) 779-3847

higher. US No. 1-2 200-240 lbs. 43.50-44.50; US No. 1-3 200-250 lbs. 42.50-43.50; US No. 2-3 230-260 lbs. 41.00-42.50; US No. 2-4 160-190 lbs. 41.00-42.50.
SOWS US No. 1-3 300-575 lbs. 33.50-37.00.
Boars: 32.00-35.50.

St. Louis Auction

HOGS: 4000.
Barrows and gilts fully steady.
BARROWS AND GILTS: US 1-2 200-230 lb. 41.00-41.25; 40 head US 1, 215 lb., at 41.50; US 1-3 200-230 lb. 40.75-41.00; 230-250 lb. 39.00-40.75.

Peoria Auction

HOGS: 1000.
Not enough barrows and gilts to fully test market, few sales steady to strong. Receipts about 400 head short of estimate.
BARROWS AND GILTS: US 1-2 25 head 220 lb. 41.00; US 1-3 200-230 lb. 39.50-40.00; 230-250 lb. 38.50-39.50.

Indianapolis Auction

HOGS: 1000.
Barrows and gilts steady, trading rather slow.
BARROWS AND GILTS: US 1-2 200-230 lb. 40.50-41.00; US 1-3 200-235 lb. 40.00-40.50; 235-250 lb. 39.00-40.00.

New Holland Dairy Auction

Wednesday, December 12
Reported receipts of 169 cows, 11 heifers, and seven bulls. Market steady with last week's market.
Load Luzerne County cows, springers 575-700.
Load Vermont cows, fresh, 510-850.
Load Pennsylvania cows, fresh, 650-1075.
Load Franklin County cows, fresh, 590-850; springers 755-770.
Two loads New York State cows, fresh, 560-960; springers, 510-900.
Maryland herd dispersal, 80 head, all stages of production, 450-1575.
Locally consigned cows 380-780. Springing Heifers 370-585. Bulls 360-555.

New York Dressed Meats

Thursday, December 13
Daily distributive - less than carlot meat trade.

Compared with Wednesday: Prices at high time for week for steer and heifer beef. Veal, calf and lamb steady. Pork loins strong, picnics, butts and spareribs steady. Hams weak. Supplies moderate to small but practically all retail outlets active for beef cuts and pork loins. Uncertainty of meat transportation prompting these outlets to stock up.

Steer Beef
Prime 600-900 pounds 68.00; Choice 600-700 67.00; 700-800 65.00; 800-900 63.00. Good 500-800 61.00-63.00.

Heifer Beef
Choice 500-700 pounds 65.00. Calf (Skin Off) 150-350 pounds Choice 97.00-100.00; Good 86.00-95.00; Standard 80.00-86.00.

Veal (Skin Off)
Choice 90-150 pounds 112.00-115.00; Good 60-90 100.00-107.00; Standard 60-120 85.00-70.00.

Lamb
Choice and Prime 30-55 pounds 75.00-78.00; 55-65 72.00-74.00.

Choice Beef Cuts
Hinds (steer) 145-190 pounds 76.00; Arm Chucks 90-105 63.00; Ribs (7-rib) 34-40 75.00-80.00; Loins (trmd) 50-70 96.00-100.00; Rounds (steer) 70-95 77.00; Full Plates 40.00; Hinds (heifer) 120-170 75.00.

Fresh Pork Cuts
Loins (regular) 8-14 pounds 82.00; 14-17 81.00; Picnics (regular) 4-8 55.50-58.50; Boston Butts 4-8 63.00-66.00; Spareribs 3 pounds down 73.00-77.00; Hams (skinned) 14-17 81.00-83.00; 17-20 75.00-77.00.

Peoria Cattle

Thursday, December 13
CATTLE: Compared with last weeks close slaughter steers 50-1.00 higher. Slaughter heifers 1.00-1.50 higher. Cows strong to 50 higher.

BULLS: Fully steady. Receipts about 60 percent slaughter steers, 30 percent slaughter heifers, and the balance mostly cows.

STEERS: Choice and Prime 1075-1300 pounds yield grade 3-4, 37.50-39.50; Choice and Prime 1250-1325 4-5, 36.00-36.50; 1300-1395 4-5, 33.00-36.00; Couple late loads 1340-1500 4-5, 34.00-35.50. Choice 950-1240 2-4, Closing 39.00-40.50; Including one load 1275 pounds at 40.50. Choice 1200-1300 3-4, 38.00-39.00. Mixed Good and Choice 900-1250 38.00-39.00; Good 37.50-38.50. Few Standard and Good Holsteins 37.00.

HEIFERS: Choice and Prime 900-1050 pounds yield grade 3-4, 37.50-38.50. Few 4-5, 950-1150 32.00-36.00. Choice 800-1050 2-4, 38.00-39.50. Load 40.00. Mixed Good and Choice 750-1100 37.00-38.00. Good 36.00-37.00.

COWS: Utility and Commercial 25.00-30.00. High dressing Utility 30.50-31.50. Cutter 24.00-29.00. Canner 22.00-25.00.

BULLS: Yield grade 1-2, 1100-1800 pounds 37.00-40.00; Individual yield grade 1, 41.00.

Regional Hay Prices

Monday, December 10, 1973
(All hay No. 2 and better prices paid by dealers at the farm price per ton.)

Hay & Straw steady to strong.
Alfalfa 55.00-60.00
Mixed Hay 40.00-50.00
Timothy Hay 30.00-40.00
Straw 35.00-40.00
Mulch 15.00-25.00

Trouble

The trouble with trouble is that too often it starts out by being fun.

Futures Trading

(Closing bids as of Thursday, December 13)

| | Chicago Cattle | Chicago Hogs | New York Maine Potatoes | Chicago Fresh Eggs |
|-------------|----------------|--------------|-------------------------|--------------------|
| December | 37.87 | 42.65 | | 69.00 |
| January '74 | | | | 57.65 |
| February | 45.95 | 45.60 | | 52.30 |
| March | | | 8.32 | 51.00 |
| April | 48.25 | 44.40 | 8.65 | 48.65 |
| May | | | 9.59 | 45.70 |
| June | 49.05 | 46.65 | | 46.45 |
| July | | 47.20 | | |
| August | 48.25 | 46.10 | | |
| October | 47.90 | 44.30 | | |
| November | | | 5.30 | |
| December | | 44.40 | | |

Trend — Cattle are Lower, Hogs are Lower, Potatoes are Lower and Eggs are Stronger.

a-asked b-bid n-normal

Markets provided by Commodity Dept., Reynolds Securities, Inc.

Omaha Cattle

Thursday, December 13
Weekly 51 cattle compared with last weeks close -

Slaughter steers and heifers 50-1.00 higher, large share 50-75 cents higher. Cows closed 2.50-3.00 higher, bulls strong to 50 cents higher. The small feeder supply strong to 50 cents higher.

Four day receipts 18,300 as compared 19,600 previous week and 20,200 a year ago. Slaughter steers approximately 41 percent, heifers 40 percent, cows 10 percent, feeders near 8 percent. The fed cattle trade met a generally good demand and price advances firmly supported by sharply higher prices at the wholesale carcass level in spite of considerable concern in the industry over transportation problems. Canadian buyers again competed rather aggressively for high-Good to Average-Choice 950-1200 pounds yield grade 2-3 steers and feeder buyers were fairly active on partly fattened two-way steers suitable for short turn in the feedlot. Marketings well distributed over the trading period and prices edged upward daily after Monday. Overall finish quite attractive with liberal percentage Choice and moderate volume high-Choice and Prime.

STEERS: Load Choice and Prime 1113 pounds yield grade 3 39.25, approximately 9 loads Choice and Prime 1062-1270 grade 3-4 39.00. Load high Good and Choice 1035 grade 2-3 39.00. At the close, Choice 975-1200 grade 2-4 37.75-38.75. Choice 1200-1300 grade 3-4 36.50-38.00. Several loads Choice grade 3-4 1250-1350 35.00-36.00. A few loads Choice and Prime 1300-1400 grade 4-5 34.00-34.50. Mixed Good and Choice 975-1175 36.50-37.75. Good 35.50-36.50. Standard and low-Good 34.50-35.50.

Average cost slaughter steers first three days 37.10 average weight 1150 pounds as compared

36.86 and 1161 pounds previous week and 37.50 and 1140 pounds a year ago.

HEIFERS: Part load Choice and Prime 950 pounds yield grade 3-4 38.00. In closing trade, high-Choice and Prime 975-1025 grade 3-4 37.50-37.75. Bulk Choice 850-1000 grade 2-4 36.25-37.25. Few late 37.50. Mixed Good and Choice 800-1000 35.50-36.50. Good 33.50-35.50. Standard and Low-Good 32.50-33.50.

COWS: Late sales Utility and Commercial 28.00-30.00, a few Utility dairybreds 30.50-31.00. Canner and Cutter 25.50-28.00. Mixed Cutter and low-Utility 28.50-28.75. Shelly Canner 23.50-25.00.

BULLS: Yield grade 1 & 2 1400-1800 pounds 37.00-40.00, a few yield grade 1 40.50-41.50.

FEEDERS: Feeder cattle prices strong to 50 cents higher on small supply, mainly fleshy two-way steers and small sowing heifers included.

STEERS: Part load Choice fleshy 1018 pounds 39.50. Several loads Choice 950-1095 39.00, load 928 39.15. High-Good and Choice 928-1120 37.50-38.50.

HEIFERS: Two loads Choice 478 pounds 44.50. Part loads Good and Choice 810-970 35.00-36.00.

xxx

Better Butter Up

It's Corn-on-the-Cob Time
Buttered sweet corn, salted to taste, is the big food treat in store for consumers living east of the Mississippi. The U.S. Department of Agriculture's Agricultural Marketing Service urges shoppers to take advantage of the generous supplies of fresh sweet corn now coming up from Florida. Supplies are expected to hold out through late December.

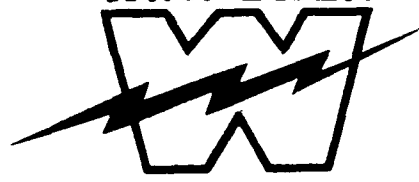
TRY A CLASSIFIED AD

U. S. Inspected Livestock Slaughter

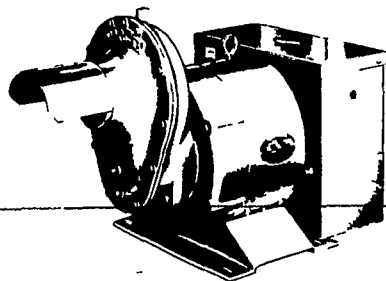
Estimated Daily Livestock Slaughter Under Federal Inspection

| | CATTLE | HOGS | SHEEP |
|-----------------------|---------|-----------|---------|
| Week To Date | 468,000 | 1,135,000 | 120,000 |
| Same Period Last Week | 466,000 | 1,221,000 | 131,000 |
| Same Period Last Year | 493,000 | 1,168,000 | 138,000 |

WINPOWER



TRACTOR DRIVEN ALTERNATORS



WORLD'S LARGEST MFG. OF TRACTOR-DRIVEN ALTERNATORS with 45 years continuous experience to give you the best quality unit for long years of service, and to protect your family against huge losses due to power outages, and brown outs.

BUY OR LEASE YOUR WINPOWER ALTERNATOR TODAY
CALL 717 733-7911
FOR AN APPOINTMENT ON YOUR FARM
L. J. EDWARDS
FARM SALES MGR.



ELECTROMECH

LLICTROMECHANICAL SLRVICE
ROUTE 222, EPHRATA, PA. 17522

PHONE (717) 733-7911

ELECTRIC MOTOR • GENERATOR • POWER TOOL SPECIALISTS

LP-NATURAL GAS
GASOLINE
DIESEL
ENGINE GEN.
SETS TO
200,000 WATTS