

# Hog Prices

## Lancaster Market

Monday, Nov. 26  
Barrows and gilts mostly steady.  
BARROWS AND GILTS: US 1 190-235 lb. 45.00-45.50; US 1-2 195-240 lb. 44.00-44.50; US 2-3 190-240 lb. 43.25-44.00; US 3-4 230-250 lb. 42.50-43.00.

## Vintage Auction

Saturday, November 24  
HOGS 943: Compared with last Saturday's market, barrows & gilts 25c to \$1 higher. US No. 1-2 200-230 lbs. 44.60-45.25, lot 46.25, No. 1-3 200-250 lbs. 43.85-44.85, No. 2-3 250-265 lbs. 41.00-43.00, few No. 2-4 275-295 lbs. 39.25-41.75, No. 2-4 145-170 lbs. 38.25-42.00. SOWS: US No. 1-3 310-545 lbs. 35.75-39.00. Boars: 35.00-39.35.

## Wednesday, Nov. 28

HOGS 310: Compared with last Wednesday's market. Barrows & Gilts 50c to \$1 lower. US No. 1-2 200-240 lbs. 43.25-44.50, No. 1-3 200-260 lbs. 42.00-43.50, few US No. 2-3 275 lbs. 42.10. Sows: US No. 1-3 300-550 lbs. 34.50-36.50. Boars: 36.00-38.00.

## Lancaster Auction

Wednesday, Nov. 28  
Barrows and gilts 1.00 lower.  
BARROWS AND GILTS: Three small lots US 1 200-230 lb. 44.50-44.75; US 1-2 200-230 lb. 43.00-43.50; US 2-3 220-245 lb. 42.35-43.00; One lot US 2-4 260 lb. 40.60. SOWS: Few US 1-3 400-575 lb. 36.00-36.75.

## New Holland Auction

Monday, Nov. 26  
HOGS 779: Compared with last Monday's market, Barrows & Gilts steady. US No. 1-2 200-240 lbs. 43.75-44.50, No. 1-3 200-250 lbs. 43.25-43.75, No. 2-3 230-270 lbs. 41.50-43.25, No. 2-4 150-195 lbs. 40.00-43.25. SOWS: US No. 1-3 300-575 lbs. 35.50-38.50. Boars: 35.00-38.00.

## St. Louis Auction

HOGS: 7000.  
Barrows and gilts 1.00 lower.  
BARROWS AND GILTS: US 1-2 200-230 lb. 41.00-41.50; US 1-3 200-240 lb. 40.00-41.00.

## Lebanon Valley Auction

Tuesday, November 27  
HOGS 325  
Barrows & Gilts mostly 25 cents to 50 cents higher.  
US 1-3 190-240 pounds barrows & gilts 43.25-44.00, 2-3 240-275 41.50-42.75.  
SOWS: US 1-3 275-500 pounds 39.25-41.75, 2-3 400-550 38.10-39.75. Boars 33.00-36.00.  
FEEDER PIGS 8  
One lot US 1-3 25 pounds 18.50 per head.

## Peoria Auction

HOGS: 5000.  
Barrows and gilts 50 lower on weights under 240 lb., heavier weights not established.  
BARROWS AND GILTS: US 1-2 200-230 lb. 41.00-41.50; US 1-3 200-240 lb. 40.50-41.00.

## Indianapolis Auction

HOGS: 3000.  
Barrows and gilts 200-230 lb. steady to 50 lower, 230-260 lb. 50 to mostly 1.00 lower, heavier weights not established.  
BARROWS AND GILTS: US 1-2 200-230 lb. 42.00-42.25; 45 head at 42.35; US 1-3 200-230 lb. 41.50-42.00.

## New Holland Horse Auction

Monday  
November 26, 1973  
Reported receipts of 450 head of horses, mules and ponies; market steady with last week's market.  
Local work horses 275-580; mules 145-210; driving horses 140-540; riding horses 145-225; better horses 250-325.  
Killers: lightweight 7-10; heavyweight 15-18.  
Mare ponies 15-30; colts 5-8; geldings 15-20; larger ponies 45-70.

TRY A  
CLASSIFIED  
AD!

PHONE 626-2191  
OR 394-3047

# New York Dressed Meats

Thursday, November 29  
Daily distributive, less than carlot meat trade.

Compared with Wednesday: Prices continue weak for steer and heifer beef. Veal and calf steady to weak. Lamb \$2.00 to \$3.00 higher, listed pork cuts mostly unchanged except hams weak to \$3.00 lower.

Outlet improved for all fresh meats this session. Beef meeting a two-way market with lean carcasses and cuts going at listed quotes, but fatty kinds discounted as much as five cents per pound. Lamb arbitrarily marked higher in line with replacement trend as demand for lamb runs poor. Pork demand about equal to available supplies providing that outlet will continue into Friday.

### Steer Beef

Prime 600-900 pounds 67.00-68.00; 600-700 66.00-67.50; 700-800 64.00-65.50; 800-900 60.50-62.50. Good 500-800 58.00-63.00.

### Heifer Beef

Choice 500-700 pounds 63.50-65.00.

### Calf (Skin Off)

150-350 Pounds  
Choice 97.00-100.00; Good 86.00-95.00; Standard 80.00-86.00.

### Veal (Skin Off)

Choice 90-150 pounds 112.00-115.00; Good 60-90 100.00-107.00; Standard 60-120 85.00-90.00.

### Lamb

Choice and Prime 30-55 pounds 77.00-80.00; 55-65 73.00-77.00.

### Choice Beef Cuts

Hinds (Steer) 145-190 pounds 75.00-78.00; Arm Chucks 90-105 56.00-59.00; Ribs (7-rib) 34-40 75.00-82.00; Loins (trmd) 50-70 97.00-102.00; Rounds (steer) 70-95 72.00-76.00; Full Plates 39.00-40.00; Hinds (heifer) 120-170 73.00-76.00.

### Fresh Pork Cuts

Loins (regular) 8-14 pounds 72.00-74.00; 14-17 70.00-74.00; Picnics (regular) 4-8 56.00-59.00; Boston Butts 4-8 64.00-68.00; Spareribs three pounds down 77.00-80.00; Hams (skinned) 14-17 88.00-90.00; 17-20 82.00-84.00.

## Peoria Cattle

Thursday, November 29  
Receipts this week: 5000  
Last week: 2900  
Year ago: 5300  
Slaughter steers closing 50 to mostly 1.00 lower as compared to last weeks close. Slaughter heifers 1.50 to mostly 2.00 lower. Cows 50-1.00 higher. Bulls steady. Supply 60 percent slaughter steers 35 percent slaughter heifers, balance mostly cows.

STEERS: Choice and Prime 1175-1200 pounds late 38.00-39.50, up to 40.50 Monday; 1200-1325 35.50-38.00; couple loads 1400-1440 34.50-36.25; Choice 900-1200 Closing 39.00-40.50, near three loads 41.00, early couple loads 42.00; Choice 1200-1250 pounds 38.00-39.00; load High Choice 1340 37.00; Mixed Good and Choice 900-1200 38.00-39.00; Good 37.00-38.00; Standard and Good Holsteins 36.50-37.50, part load 37.75.

HEIFERS: Choice and Prime 900-1100 pounds 36.00-37.50; Few 950-1125 32.50-35.50; Choice 800-1050 37.00-38.25, mostly 37.00-

38.00; Early couple part load-loads 40.25-40.50; Mixed Good and Choice 750-1100 36.00-37.00; Good 35.00-36.00.  
COWS: Utility and Commercial 27.00-32.00; High-dressing Utility 32.50, Few 33.00; Cutter 26.00-30.00; Canner 23.00-26.00; Few Commercial 23.50.  
BULLS: Yield grade 1-2 1100-1800 pounds 37.00-40.00; Few yield grade 1 41.00-42.00.

SELL YOUR BUTCHER HOGS DIRECT  
Now accepting Hogs on Grade and Yield basis.  
**Ezra W. Martin Co.**  
Garden Spot Quality Meats  
Call AL SHAFFER At  
Lancaster, Pa  
717-397-5113  
Evenings (215) 779-3847

# Futures Trading

(Closing bids as of Thursday, November 29th)

	Chicago Cattle	Chicago Hogs	New York Maine Potatoes	Chicago Fresh Eggs
December	40.95	44.25		60.65
January '74				54.95
February	46.35	46.20		50.50
March			7.55	48.10
April	47.50	46.55	7.87	47.00
May			8.85	44.35
June	47.70	45.80		
July		45.90		
August	46.85	43.90		
October	46.00			
November			5.26	

Trend — Cattle are Lower, Hogs are Lower, Potatoes are Lower, and Eggs are Stronger.

a-asked b-bid n-normal  
Markets provided by Commodity Dept., Reynolds Securities, Inc.

## Omaha Cattle

Thursday, November 29  
Compared with previous week's close: Slaughter steers and heifers unevenly 1.00-1.50 lower in often slow trading. Cows 50-1.00 lower after losing mild early advance. Bulls weak to 1.00 lower. Small feeder supply steady to 1.00 lower.

Four day receipts 22,000 as compared 12,800 previous week which included holiday and 16,700 a year ago. Steers approximately 33 percent, heifers 35 percent, cows 10 percent and feeders 17 percent including those for Friday auction. Fed cattle prices forced downward in face of expanded marketing following Thanksgiving holiday coupled with declining carcass trade. There was moderate seller pressure to move the ample supply of market ready cattle while on the other hand, some slaughterers came into week with several days inventory on hand.

In addition, Canadian interest was quite moderate with the recently imposed surtax scheduled for review at weekend. Prices were squeezed within an ever narrowing range; best demand continued to center on High Good and Choice 975-1125 pounds yield grade 2-3 steers and at mid-week yield grade 3-4 heifers were subjected to sharp discounts in price. There was a liberal percentage Choice steers and heifers and a moderate volume High-Choice and Prime, however, many carried a modest amount of mud.

STEERS: Early, two loads Choice and Prime 1003-1018 pounds Grade 3 41.25-41.50. At midweek, two loads same grade

38.00; Early couple part load-loads 40.25-40.50; Mixed Good and Choice 750-1100 36.00-37.00; Good 35.00-36.00.

COWS: Utility and Commercial 27.00-32.00; High-dressing Utility 32.50, Few 33.00; Cutter 26.00-30.00; Canner 23.00-26.00; Few Commercial 23.50.

BULLS: Yield grade 1-2 1100-1800 pounds 37.00-40.00; Few yield grade 1 41.00-42.00.

1044 3 41.00, Several loads 1050-1100 3-4 39.50-40.00, load 1075 38.75 late. Choice 975-1150 2-4 mainly 38.00-39.50, late sales 37.00-38.00. Choice 1150-1300 3-4 37.00-38.50, Several loads 1250-1442 4 with few 5 33.50-36.00. Mixed Good and Choice late 950-1200 37.00-38.00. Good 36.00-37.50. Standard and Low-Good 35.50-36.50.

Average cost slaughter steers first three days 39.02 average weights 1156 pounds as compared 39.37 and 1156 previous week and 33.87 and 1128 a year ago.

HEIFERS: Early, two loads High-Choice and Prime 946-958 pounds grade 3-4 39.75, moderate volume 856-1209 39.25-39.50. At midweek, three loads Choice with end Prime 850-955 3 38.75-39.00, Several loads Choice and Prime 975-1025 2-4 38.00. Choice 850-1075 2-4 36.50-38.00, few loads Choice 925-975 3 38.25-38.50. Mixed Good and Choice 36.00-37.00. Good 34.50-36.00.

COWS: Utility and Commercial 28.50-31.00, few 31.50-32.00. Canner and Cutter 25.50-29.00, Mixed Cutter and Low-Utility 29.25-29.50.

BULLS: Yield grade 1-2 1400-1800 pounds 36.00-40.00, few yield grade 41.00-42.00.

FEEDERS: Prices steady to 1.00 lower on limited available supply with outgo of approximately 1,500 head mainly fleshy two-way steers and moderate volume heifers.

STEERS: Load Choice 791 pounds 44.50, three loads Choice 811-878 42.50-43.50. High-Good and Choice 974-1100 40.00-41.00, few Choice 1009-1041 41.50.

HEIFERS: Three loads Choice 700-824 pounds 42.00, few loads Choice 808-935 38.50-40.00, load 999 37.50. Good and Choice stock cows 32.00-36.00.

## Green Dragon Hay

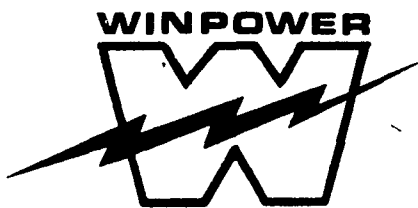
Friday, November 23, 1973  
73 loads Hay  
Alfalfa 53.00-78.00, one load at 87.00; Timothy 35.00-50.00; Mixed hay 36.00-62.00; Clover, few loads 43.00-63.00.

29 loads Straw  
Straw 38.00-47.00.  
Ear Corn, one load at 70.00.  
Corn stalks, one load at 24.50.

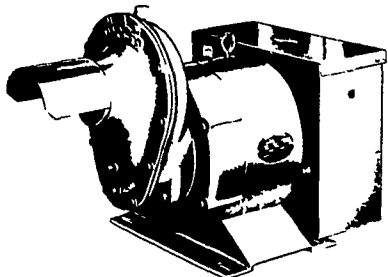
## U. S. Inspected Livestock Slaughter

Estimated Daily Livestock Slaughter Under Federal Inspection

	CATTLE	HOGS	SHEEP
Week To Date	484,000	1,271,000	139,000
Same Period Last Week	352,000	906,000	105,000
Same Period Last Year	494,000	1,311,000	120,000



TRACTOR DRIVEN ALTERNATORS



WORLDS LARGEST MFG. OF TRACTOR-DRIVEN ALTERNATORS with 45 years continuous experience to give you the best quality unit for long years of service and to protect your family against huge losses due to power outages, and brown outs.

BUY OR LEASE  
YOUR WINPOWER ALTERNATOR TODAY  
CALL 717 733-7911  
FOR AN APPOINTMENT ON YOUR FARM  
L. J. EDWARDS  
FARM SALES MGR.



**ELECTROMECH**  
ELECTROMECHANICAL SERVICE  
ROUTE 222, EPHRATA, PA. 17522  
PHONE (717) 733-7911

LP-NATURAL GAS  
GASOLINE  
DIESEL  
ENGINE GEN.  
SETS TO  
200,000 WATTS

ELECTRIC MOTOR • GENERATOR • POWER TOOL SPECIALISTS