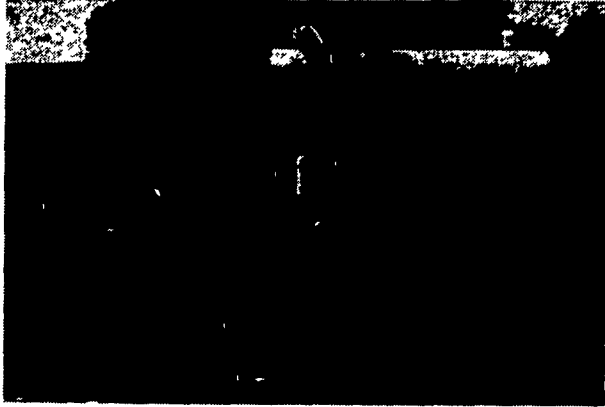


# Winning Conservation Photographers Named

Stephen Kessler 1490 Mission Rd., Lancaster, and Rick Ramsdell, 802 Blue Grass Rd., Lancaster, were named first

Wash Your Own Cage House and Save \$\$\$  
WITH OUR HIGH PRESSURE  
SPRAYING RENTAL SERVICE



CAN BE USED FOR HOG PENS, FARM MACHINERY, CALF PENS, MANY OTHER USES.

After much washing and disinfecting experience, we understand the proper high pressure, high volume equipment needed to do an effective job. We now have sprayers available to rent which gives you an opportunity to save money. This rig is on a trailer and can be towed with a pick-up truck. We will deliver and pick up sprayer in the event you are not equipped to tow it.

*Spraying*

2020 Horseshoe Road

(717) 397-0035

**RICHARD  
R. FORRY**

Lancaster, Pa. 17601



## Make More Milk... Make More Money Beacon Golden Test Rations

**C.A.F. — The Cow Acceptability Factor** — determines how much grain your cows will eat. Beacon Golden Test milking rations are partially pelleted, contain a proven level of crimped corn for extra palatability. Even finicky eaters clean these feeds up well, responding with higher milk production than when fed less palatable feeds.

The Cow Acceptability Factor helps get more grain into your cows in critical periods of milk production. Call us today for Beacon Golden Test Rations with C.A.F.

**H. Jacob Hooper**  
Intercourse, Pa.

**H. M. Stauffer &  
Sons, Inc.**  
Leola, Pa.

**O. Kenneth McCracken  
& Son**  
Manheim, Pa.

**Earl Sauder, Inc.**  
New Holland, Pa.

**BEACON FEEDS**

The Beacon Milling Company, Inc.  
Headquarters: Cayuga, N. Y.

prize winners in this year's conservation photo contest, held Thursday at the Soil and Conservation Service office at the Farm and Home Center, Lancaster. Both are students at Manheim Township High School.

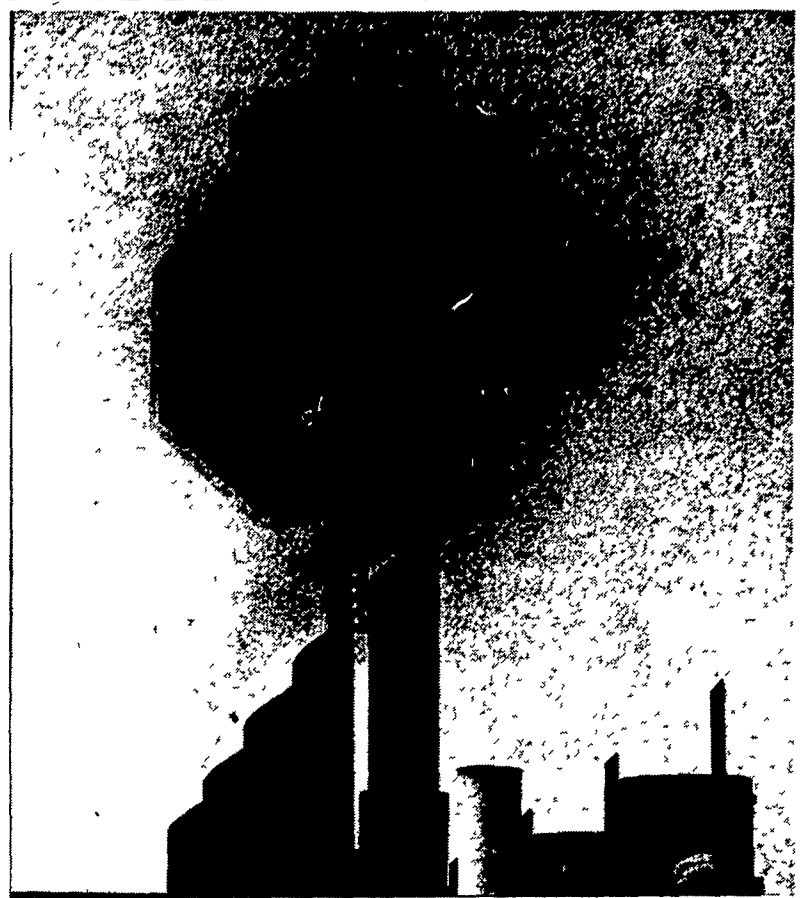
According to H. Henry Hackman, executive assistant of the Lancaster County Conservation District, there were 16 area high school students entered in this year's contest, and enough photos submitted to cover two walls and a door of the SCS office. Prizes were awarded in two categories, one for beautiful areas of the

## Conservationist Urges Proper Tree Control

Landowners should cut back woodland along crop fields according to Karl Hellerick of the Lebanon County Soil Conservation Service. A cut back border will remove shade and competition from the adjoining trees and thereby increase crop yield. All trees, 4 inches or more in diameter, should be removed for a width of 30 feet. This wood might be used for timber purposes including fire place wood.

A relative or neighbor, who works in town, could bring a daily load of fireplace wood to energy hungry consumers, or to a retail outlet such as a gas station, or a grocery store. Cutting back borders may be a way for do-it-yourselfers to get their own wood, Hellerick added.

Another benefit of this practice is the creation of an ideal



environment, one for unsightly scenes.

Ramsdell's still-life of tomatoes topped the "Beautiful" shots and another entry Ramsdell captured an honorable mention. Second prize went to Jon Ebersole, 908 Shreiner Ave.,

shrubvine area for song birds and wildlife for the next 10 years. Mr. Hellerick concludes that here is a conservation practice that can provide extra income, increase crop yield, increase energy supply and increase wildlife. A real winner!

Lancaster, and third went to Heidi J. Linn, 195 Stanley Ave., Landisville.

Other "Ugly" winners were Brad Morris, 643 Hampden Road, Elizabethtown, and Brad Brubaker, 240 Landis Valley Rd., Lititz.

Judges for the contest were Grant Heilman, a professional photographer from Lititz, and Dr. Robert Lowing, chairman of the art department at Millersville State College. Prizes were donated by the Conestoga Valley Association, the Lancaster Environmental Action Federation and Earl Rebman.

# ONLY BROCK has all this.

### Full Range Of Bin Sizes And Styles

6 models 28 sizes 6, 7, 9 and 12 foot diameters Capacities range from 3 to 55 tons

### Completely Galvanized Bin

Every part, from lid to boot, including legs and braces, is fully galvanized.

### Better, Built Bin

Heavier gauge steel, higher tensile steel, better galvanized finish makes BROCK the finest in its field.

### New All Out Boot Design

With a new one piece injection molded transition for new easier feed down.

### Ground Level Operated Lid

Lid opens or closes easily with the pull of a chain

### Precision Fabrication

A new plant using the latest manufacturing methods produces a more accurately punched, more beautifully formed, easily erected bin

### Brock Auger Delivery System

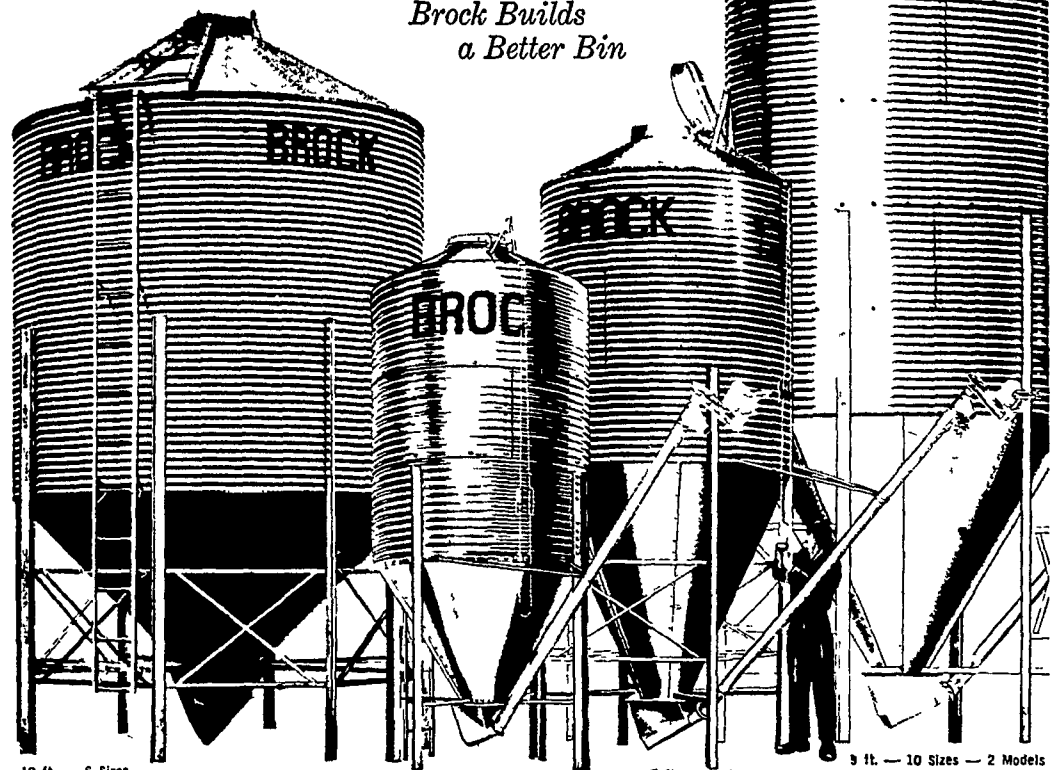
A single motor delivery system for poultry, hog and cattle feeding

### Brock Leadership

Brock leads all others in the feed bin business. You are years ahead with Brock.

### Feed Bins and Grain Bins Many Sizes Available

*Brock Builds  
a Better Bin*



12 ft. — 6 Sizes

6 ft. — 8 Sizes — 2 Models

7 ft. — 4 Sizes

9 ft. — 10 Sizes — 2 Models

WE SELL, SERVICE AND INSTALL



**E. M. HERR EQUIPMENT, INC.**

R. D. 1, Willow Street

717-464-3321