

Poultry Market Reports

Egg Market

Wednesday, Nov. 21
Baltimore

Market steady with confident but cautious undertone. Supplies of mediums short of full needs, large and extra large adequate. Demand fair to good.

Cartoned eggs: Prices to retailers, state graded (min one case sale) White Grade A Large 81-85, mostly 81-83; White Grade A Medium 79-81, mostly 79-80.

Wednesday, Nov. 21
Philadelphia Eggs

Prices steady. Cartoning demand fair to occasionally good for late fill-in needs. Offerings adequate to barely adequate on larger sizes; short on Mediums. Undertone fully steady.

Prices to retailers: Sales to volume buyers, consumer grades white eggs in cartons.

Delivered Store Door

A Extra		
Large	76	77½
A Large	75	76½
A Medium	71	72½

Eastern Pa. & N.J.

Wednesday, Nov. 21
Live Poultry

Prices slightly lower on light type hens. Demand fair though less aggressive than in past weeks. Offerings spotty with occasional cancellations noted due to higher egg prices. Offerings of heavy hens adequate for limited needs.

Prices paid at farm: Light type hens 12-16, mostly 15½-16 in Pa., mostly 15-16 in N. J. Heavy type hens TFEWR.

New England Weekly Shell Egg Report

Tuesday, November 20

Prices paid per dozen Grade "A" brown eggs in cartons delivered to retail stores:

	EX LARGE	LARGE	MEDIUM	SMALL
MASS+	73-79	71-77	69-75	54-60
Mostly	74-76	72-74	70-72	55-59
NEW HAMP	72-79	70-77	68-75	53-60
Mostly	74-75	72-73	70-71	55-56
R. I.	76-77	74-75	72-73	57-58
Mostly				
VERMONT	74-83	72-79	70-76	TOO FEW
Mostly				
MAINE	74-76	72-74	70-72	55-57
Mostly				

+ Includes Central & Western Sections Only.

Nest Run Eggs

Prices are from Egg Clearinghouse, Inc., (ECI) Durham, N.H. and reflect trading prices for gradeable nest run eggs (GNR) on ECI, a nationwide trading center for producers, packers and marketers. GNR eggs are classified by weight in 30-dozen cases, and traded in lots of either 300 or 750 cases. Prices are FOB buyers dock, and are computed Tuesday and Thursday of each week. This week's prices for each classification were:

Classification	New Weight Per Case	Tuesday	Friday
Extra Large	51 lbs.	0	0
Class 1 - Large	48 lbs.	66	66
Class 3 - Medium	42 lbs.	62	62
Class 4 - Small	39 lbs.	52	52
Breaking Stock	48 lbs.	55	55
Checks	48 lbs.	43	43

New Holland Dairy Auction

Wednesday, November 21

Reported receipts of 147 cows, 7 heifers, and 4 bulls. Market stronger than last week's market.

Load of Virginia cows, fresh, 790-820; springers 675-790.

Load Vermont cows, fresh, 670-1125; springers 820-1030.

Lancaster County herd dispersal, 24 head, all stages of production, 350-1050.

Maryland herd dispersal, 32 head, all stages of production, 370-830.

Franklin County herd dispersal, 18 head, all stages of production, 265-710.

Locally consigned cows 640-870.

Springing Heifers 530-725.

Bulls 500-630.

Christmas Seal Designer



Pretty Cheri Johnson says her designs for the 1973 Christmas Seals are a personal expression of her love for the holiday season. She hopes others will react to the Seals in another personal way—with a generous contribution. "After all," she says, "the right for clean air and healthy lungs is everyone's problem. It's a matter of life and breath."

Three Types?

There are three types of people: people who make things happen, people who watch things happen, and people who wonder what happened.

Weekly New York Egg Market

From Monday, November 19th to Friday, November 23rd

	Mon.	Tues.	Wed.	Thurs.	Fri.
WHITE				H	
Fcy. Ex. Large	72	72	72	O	72
Large	70	71	71	L	71
Mediums	66	69	69	I	69
Pullets	57	60	60	D	60
Peeweese	42	45	45	A	45
				Y	

	Mon.	Tues.	Wed.	Thurs.	Fri.
BROWN					
Fcy. Large	70	70	71		71
Mediums	Unquoted				
Pullets	Unquoted				
Peeweese	Unquoted				

	Mon.	Tues.	Wed.	Thurs.	Fri.
Off Grade Large	64	65	65		65
Checks	42	42	42		42

Long Tone — Market still closely cleared; undertone cautious.
Copyright 1973 Urner Barry Publications

Delmarva

Wednesday, Nov. 21
Broiler-Fryer Market

Ready to cook movement good for late week arrival. Slaughter schedules still curtailed at many plants. Less than trucklot prices generally 2 cents higher on both plant and US Grade A. Live supplies fully adequate. Undertone firm.

Pool trucklot prices for Friday arrival US Grade A 36-42, mostly 36, Plant Grade 35-40, mostly 35.

50-53; Rabbits 35-76, mostly 75-76; Guinea 90; Pigeons (per pr.) 1.15-3.50.

Total coops sold 282. Poultry received Monday 7 p.m. to 10:30 p.m. Tuesday 7 a.m. to 12 Noon. Sale at 11:30 a.m.

Directions — Take Rt. 22 thruway. Exit at Fogelsville exit North on stoplight in Fogelsville, turn left, proceed 1 mile.

Fogelsville

November 19, 1973

(Prices paid dock weights cents per lb.)

Hens, light type 15-17; Hens, heavy type 23-29½; Pullets 26-43, mostly 36-40; Capons 45-55, mostly 49-53; Ducks 30-46, mostly 44-46; Drakes 25-55, mostly 49-55; Geese 40-56; Turkeys - Toms 25-49; Turkeys - Hens 50-58, mostly

Green Dragon Hay

Friday, November 16

41 loads hay, including: Alfalfa 43.00 - 74.00; Timothy 40.00 - 53.00; Mixed hay 40.00 - 60.00; few loads Hay 28.00 - 47.00; one load Clover 55.00; one load Orchard Grass 43.50.

13 loads straw 40.00 - 50.00. One load corn fodder 35.00. One load corn stalk 37.00. 6 loads corn 60.00 - 67.00.

PLAN NOW FOR 1974

Dave Hillman, Lebanon, Dauphin County

717-362-3252

Says:

Conserve Energy — Join Dec 27 & 28
Bus Tour & Dale Clary Alfalfa Meeting

PENN-JERSEY HARVESTORE

New Holland, Pa

717-354-5171



sustain top production with the **BABCOCK B-300**

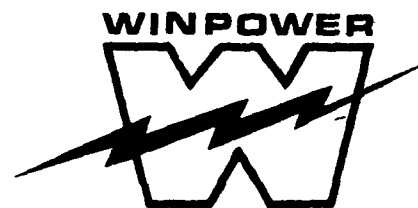
Keeping production up... costs down... is the profit key in poultry operations. And more and more records on commercial flocks of Babcock B-300's... "The Businessman's Bird"... show sustained production of top quality eggs... often with an additional 20 to 30 eggs per bird housed over other strains. Come in... look at the records and the B-300... "The Businessman's Bird".



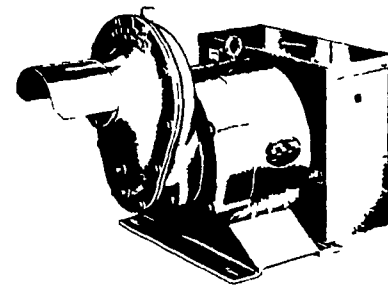
BABCOCK FARMS, INC.

Telephone (717) 626-8257

Telephone (717) 626-8561



TRACTOR DRIVEN ALTERNATORS



WORLD'S LARGEST MFG. OF TRACTOR-DRIVEN ALTERNATORS with 45 years continuous experience to give you the best quality unit for long years of service, and to protect your family against huge losses due to power outages, and brown outs.

BUY OR LEASE
YOUR WINPOWER ALTERNATOR TODAY
CALL 717 733-7911
FOR AN APPOINTMENT ON YOUR FARM
L. J. EDWARDS
FARM SALES MGR.



ELECTROMECH
ELECTROMECHANICAL SERVICE
ROUTE 222, EPHRATA, PA. 17522
PHONE (717) 733-7911

LP-NATURAL GAS
GASOLINE
DIESEL
ENGINE GEN.
SETS TO
200,000 WATTS

ELECTRIC MOTOR • GENERATOR • POWER TOOL SPECIALISTS