

Fulton Grange Youth Bowling Party Tonight

Fulton Grange 66 held its regular meeting November 12 at the Grange Hall in Oakryn. The Master Charles McSparran conducted the business session.

The youth committee has reserved four lanes at the Garden Spot Bowling Center, Strasburg for Saturday, November 17 at 9 p.m. for a bowling party for Grangers and friends. This committee is also sponsoring a bus trip to see the Ice Follies at Hershey December 1, leaving Penn Hill Friends Meeting House at 7 p.m., stopping at Quarryville. LeRoy Welk, Quarryville RD3, is in charge of reservations.

Fulton Grange supports county Legislators at Harrisburg who are opposed to lowering the drinking age. They also supported the Solanco Fair officials who have decided to continue the fair at Quarryville versus the movement for a county fair. They believe it is difficult to maintain a

strictly agricultural fair on the county level and it would give less opportunity for exhibitors, especially for youth participation.

Donations were given to the Arthritis Foundation, Teen Haven and the Lancaster County Mental Health Association for Christmas gifts for patients in after-care homes in the community.

Miss Tina Murphy, daughter of Mr. and Mrs. Marvin Murphy, Christiana RD, is Fulton Grange's contestant in the Miss Solanco Beauty contest November 24.

The Women's Activities committee, Mrs. Wm. J. Rhoades chairman, has a new supply of Pennsylvania State Grange cookbooks. The supply is going fast. The printers, who have put out 40,000 copies and are working on another 10,000, cannot keep up with the demand.

The Centennial committee,

Mrs. J. Stanley Stauffer Jr. chairman, announced that the special 100th anniversary program will be held May 4, 1974 with both the National Grange Master John W. Scott and State Master A. Wayne Readinger taking part. A centennial pageant will be presented. A history of Fulton Grange is being prepared by the committee.

Miss Joyce Galbreath, Lecturer, opened the program with singing. Reports of the State Grange session at Reading October 22 - 25 were given by Mr. and Mrs. Clifford W. Holloway Jr. and Mr. and Mrs. C. G. McSparran. Clifford Holloway was elected a member of the Pennsylvania State Grange Executive committee at the session.

Grange membership over the state showed a substantial increase this year. Five members

from Fulton Grange participated in the centennial pageant and several members received the sixth degree at the Convention.

Mrs. W. Harold Graybeal gave a travelogue and showed colored slides of a trip she and three friends took to 11 European countries last year.

Mr. and Mrs. Charles McSparran had an exhibit of articles which were over 100 years old and told about them. There will be a similar exhibit at each Grange meeting this year in commemoration of Fulton Grange's 100th anniversary.

Instead of holding the next regular meeting Nov. 26 members and friends will meet at the Grange Hall at 7:30 p.m. to go in a group to Calvert Grange 424, Md. The men are asked to take 10 ear exhibits of corn and the women either, apple, plain or spiced pumpkin pies for Corn and Pie Night. There will be other exhibits and a candle-making demonstration. Fulton Grange will provide special music.

Fifty- and 25-year members will be honored at the December 10 meeting.

Goodwill Promotes Two

Harry Shuey has been named director of Industrial Contracts for Goodwill Industries of Lancaster County, according to Norman L. Schell, president of the Lancaster Goodwill. Shuey previously was employed with H.U.D. as Repair Specialist. He spent seven years in the United States Air Force after graduating from Tri-Valley High School. Shuey currently resides at 41 Market Square in Manheim.

Glyn Morris has been promoted to Transportation Supervisor for Goodwill Industries of Lancaster County. Morris is a native of Liverpool, England and a graduate of Bankfield High School in Widnes, Liverpool, England. He also served four years in the United States Army. Morris previously served as dock foreman at the Lancaster Goodwill. He resides at 480D Euclid Avenue in Lancaster.

Dwindling Resources?

There has been a lot of talk about the United States exhausting its valued natural resources. There's a good chance — the way things are going — that the first great resource to fold up will be the American taxpayer.

Local Farmer Imports Clun Forest Sheep

Some of the nation's first Clun Forest sheep have arrived this month in Pennsylvania. The flock of 11 Cluns was imported from Nova Scotia by Warn G. Menhennett of Cochranville.

Clun Forest sheep are England's most popular breed. They are medium sized sheep with open faces and very fast growing lambs. A twin Clun lamb can be expected to weigh more than 100 pounds in 90 days, according to Menhennett.

The lambs produce very lean carcasses with a high dressing percentage. In England Clun ewes have an average lambing percentage of 173 percent. The wool is of consistently high quality with a spinning count of 58.



WHITE WASHING with DAIRY WHITE

Dries White
Does Not Rub Off
No Wet Floors
Is Compatible With Disinfectant

MAYNARD L. BEITZEL

Witmer, Pa.

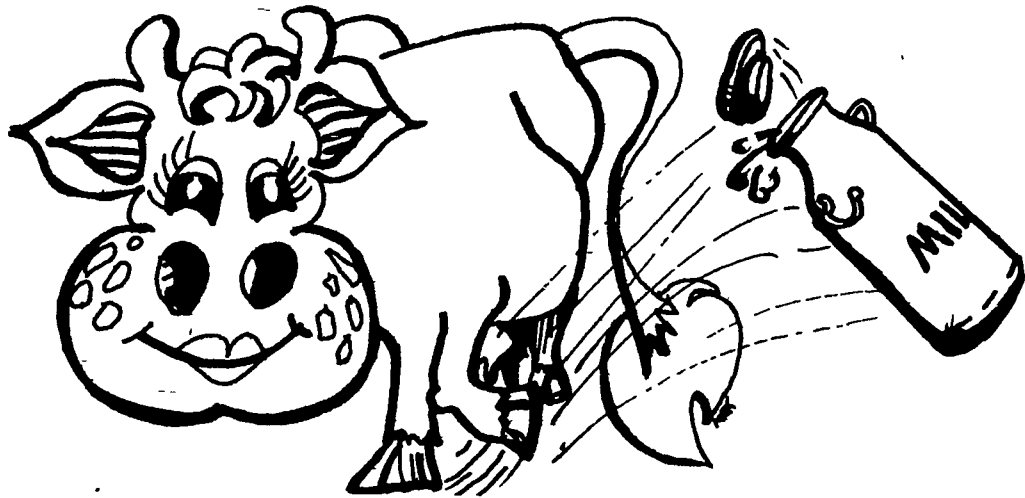
392-7227

HIGH PRESSURE WASHING OF POULTRY HOUSES AND VEAL PENS

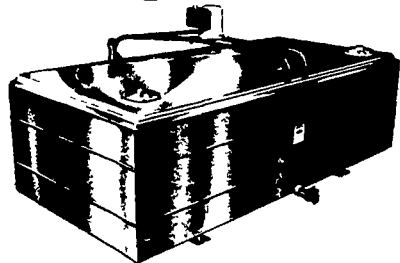
BARRY L. HERR

1744 Pioneer Road, Lancaster, Pa.
Phone 717-464-2044

Formerly operated by Maynard L. Beitzel



Now That You Are Going Bulk
Let's Put in The Best
Put in a Girton



Diplomat



Girton with many outstanding features. Come in and leave us tell you about them. Reliability - Dependability.

We Will Not Be Under Sold.
Sales & Service - Call Collect

HALLER ELECTRIC, INC.

R.D.2, Denver, Pa. 17517

Ph. 215-267-7610 OR 215-267-7514

24 Hour Service

Serving all of Lancaster and Lebanon County

PURINA HORSE CHOWS

for the good of *your* horse, anywhere...
trailing, showing, or just at home.

There's complete Horse Chow Checkers, with the hay built right into the pellets. Or long time favorite Omolene, to feed if you have plenty of good hay available. Or Big'Un, that'll help grow your foals big, fast. Or Breeding Horse Chow, to help peak condition your mares and stallions. Or Horse Block, when pasture's sparse. Or Horse-Plus, for that extra boost and bloom.

They've all been developed and proven on *our* horses at the Purina Horse Research Center, so you can have confidence in our growing family of good things for *your* horses. Drop in and "talk horse" next time you see the red and white Checkerboard.

Wenger's Feed Mill Inc.

Ph: 367-1195
Rheems

West Willow Farmers Assn., Inc.

Ph: 464-3431
West Willow

Ira B. Landis

Ph: 665-3248
Box 276, Manheim RD3

John J. Hess, II, Inc.

Ph. 442-4632
Paradise

James High & Sons

Ph: 354-0301
Gordonville

John B. Kurtz

Ph: 354-9251
R.D.3, Ephrata

